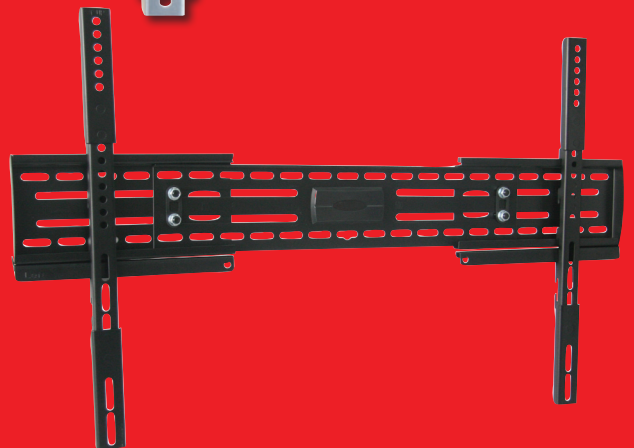
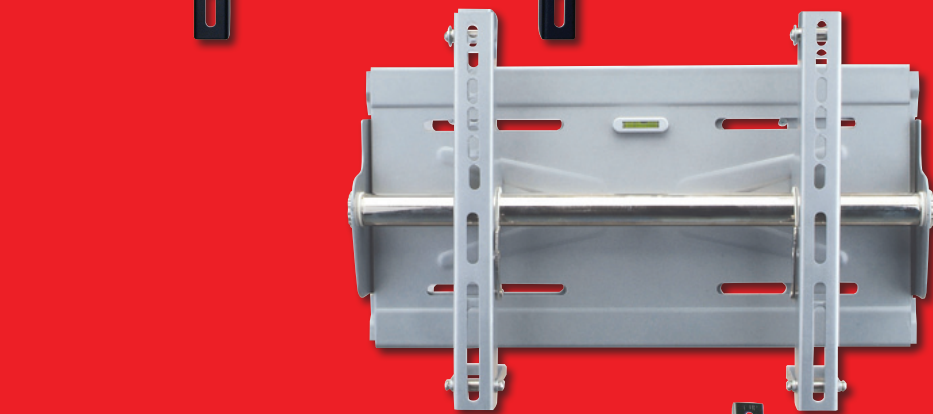


HOME *theatre*

TV Wall Mounts
Simple. Reliable.



Matchmaster
TV Reception Systems

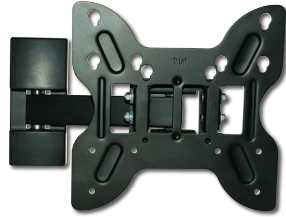
For the Best

Home Theatre Accessories for your LCD & Plasma TV

04MM-LCDB2 LCD TV Wall Mount

5-15° Tilt Action

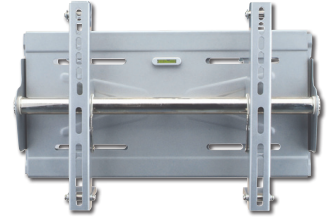
- Max TV size 102cm/40"
- Extends 24cm from wall
- Holds weight up to 36kg
- 5 - 15° tilt
- Easy slide in installation and removal
- Cable management organises cables neatly
- 5 Year warranty
- Rigid extruded aluminium construction & anodised finish
- Integrated spirit level for simple and accurate install



04MM-PME2 Plasma TV & LCD Wall Mount

15° Tilt Action

- Expandable arms and cross bar to fit screens 32" - 60"
- Full sized universal wall mount with 15° adjustable tilt
- Easy & quick installation - Lift and Hook design
- Sturdy steel construction holds up to 90kgs
- Compatible with all hole patterns including VESA standard
- Integrated spirit level for simple and accurate install
- 5 Year Warranty



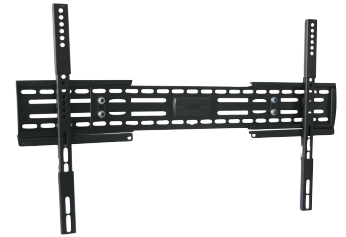
04MM-LCDB3 LCD TV VESA Wall Mount ± 15° Tilt Action with extendable arm

- Max TV size 73cm/29"
- Extends 38.5cm from wall
- 180° swivel ± 15° tilt control
- Rigid extruded aluminium construction
- Integrated spirit level for simple and accurate install
- Holds weight up to 25kg
- Knob adjustment allows for up to 15° tilt control
- Cable management organises cables neatly



04MM-PME3 Flat Panel TV /Plasma Mount

- Low profile - mounts less than 4cm (1") from the wall
- Full sized universal wall mount back plate
- Extension arms to fit screens 26" - 65"
- Two height positions on arms
- Variety of mounting holes in rear plate
- Easy installation
- Sturdy construction holds up to 50kgs
- Compatible with all hole patterns including VESA standard
- Magnetic spirit level for simple and accurate install
- Built-in Safety lock keeps your flat panel TV safe and stable
- Wall plate and Arm unit both extendable



04MM-PMF1 Plasma TV & LCD Wall Mount

- Low profile - mounts less than 5cm (2") from the wall
- Expandable arms to fit screens 32" - 50"
- Easy installation - Lift and hook design
- Sturdy steel construction holds up to 50kgs
- Compatible with all hole patterns including VESA standard
- Integrated spirit level for simple and accurate install
- 5 Year warranty



04MM-LCDAP Plasma TV & LCD Universal Adaptor Plate

- Allows VESA compliant mounts to fit non-VESA screens
- Suitable for use with 04MM-LCDB2 & 04MM-LCDB3
- Adapts to any mounting pattern between 140 x 145mm & 390 x 300mm
- Fits VESA 75 and VESA 100 mounts
- Hardware included
- 5 Year warranty

