



SIBERIA LED WEATHERPROOF BATTEN

Features

- Installation: Surface mount or suspended
- Optional Sharkward microwave sensor detection suitable for security in residential or commercial applications
- Optional screw-lock stainless clips for additional proofing
- Detachable aluminium gear tray and lanyards for easy maintenance or replacement
- Highly durable PC housing for impact protection
- Translucent opal diffuser w/ antiglare properties and >90% light transmittance
- 20mm cable entry points at both ends
- High quality driver and SMD chips
- Available w/ prewired emergency configurations



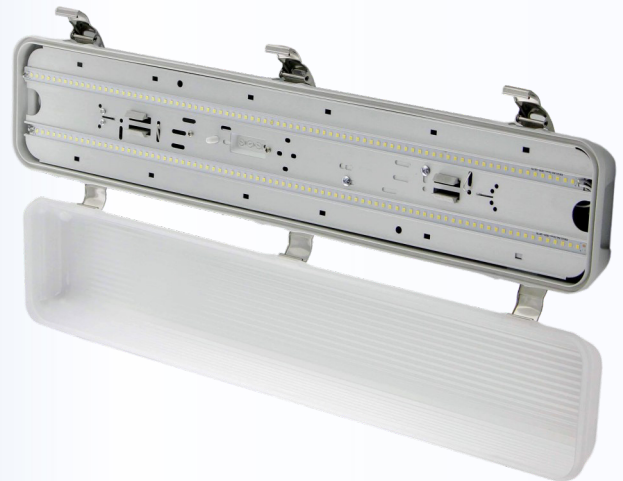
SENSOR

Specifications

Installation: Surface mount or suspended
 Body and Diffuser: PC polycarbonate
 Gear Tray: ACD12 aluminium
 Clips and Brackets: 316 stainless steel
 CTC: 3K/4K/6K
 Light Category: LED- SMD 2835
 SMD Chip Size: 1.0mm²
 Input Voltage: 220-240Vac 50Hz
 Output Voltage: 30-40Vdc (Max. 55V)
 LED Driver: Non-dimmable
 Power Factor: 0.95
 Operating Temp: -5 to 55°C
 Operating Humidity: 0- 90%
 Ingress Protection: IP65
 Impact Protection: IK08
 Variable Wattage: (4ft) 26W/32.5W/39W/40W

Sensor Specifications

Sensor Type: Microwave switch (Micro-disconnection)
 Voltage: 220-240V 50/60Hz
 Load: 1000V
 Frequency: 5.8GHz
 Transmission Power: <0.2mW
 Operating °C: +60°C
 Operating Cycles: 100 000 cycles
 F1 Fuse: T6 3AL, 250Vac



Application

Ideal for domestic, commercial and semi-industrial use ie underground car parks and security walking areas

| Part No. | Watts | Sensor | Lumens | LED Qty | Finish | Length | Width | Height |
|----------|-------|--------|--------|---------|--------|--------|-------|--------|
| NLS20241 | 20W | X | 2400lm | 168 | Grey | 650mm | 135mm | 95mm |
| NLS20245 | 40W | X | 4800lm | 334 | Grey | 1230mm | 115mm | 70mm |
| NLS20288 | 20W | ✓ | 2400lm | 168 | Grey | 660mm | 115mm | 70mm |
| NLS20289 | 40W | ✓ | 4800lm | 334 | Grey | 1280mm | 135mm | 85mm |