

Inexpensive surge protection for expensive electronic equipment



Fine protection with the Clipsal 30SFM Surge Filter



Voltage surges may result from various sources, including the switching on and off of electrical loads, operating of high current equipment such as arc welders or from electrical storms*. With each surge, the delicate and expensive electronic circuitry used in a wide range of appliances may degrade and in time be completely destroyed.

The 30SFM Surge Filter is a compact module designed to absorb surges, while at the same time clamping surge voltages, which may typically exceed 2.5kV, between 275 and 710 volts.

Three Metal Oxide Varistors (MOVs) perform the clamping function, with each MOV capable of absorbing 140 Joules of electrical energy.





Neon indicator

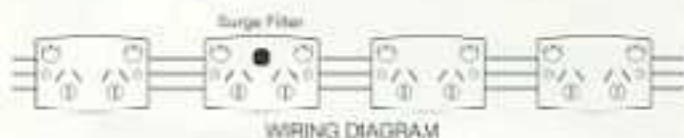
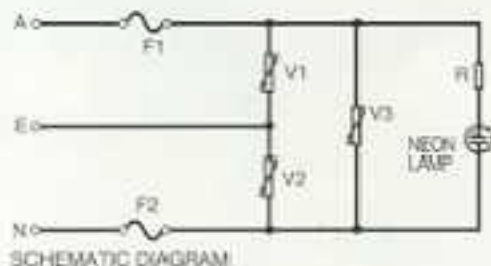
Built into the module is a neon lamp that glows when the surge filter is operating correctly. After repeated clamping of minor spikes, or following a voltage surge that exceeds the capacity of the surge filter, the MOVs may become overstressed and fail, causing the neon lamp to extinguish.

Although the module will no longer offer voltage surge protection, the power outlet will continue to operate normally and the module should be replaced as soon as possible.

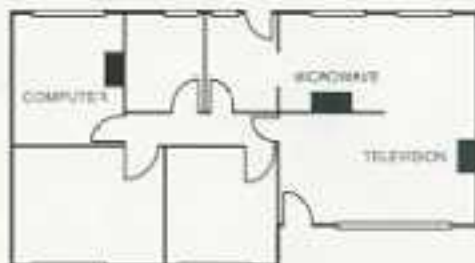


Fits all 30 Series apertures

The 30SFM Surge Filter simply clips into 30 Series apertures, including the central switch aperture of 25XA and 2025XA plates, to provide fine protection for televisions, video recorders, computers, fax machines and microwave ovens. The 30SFM Surge Filter module is also available pre-installed in Clipsal Standard Pattern (Cat. No. 25SF) and 2000 Series (Cat. No. 2025SF) twin power outlets.



The Clipsal Surge Filter can be fitted anywhere on a circuit to protect all outlets on that circuit.



However, due to circuit impedances, the maximum clamping voltages along the circuit may exceed 710 volts. In situations where sensitive electronic equipment is being used, a number of surge filter modules can be installed on the same power circuit to provide extra protection.



Specifications

CATALOGUE NUMBER	30SFM
Normal Operating Voltage	250V 10A a.c.
Maximum Operating Voltage	275V a.c., 369V d.c.
Typical Capacitance	900pF
Peak Current (8/20 μ S)	6.5kA
Maximum Clamping Voltage (8/20 μ S, 100A)	710 Volts
Energy Absorption(10/1000 μ S)	3 x 140J
Complies with	AS3100

Models Available

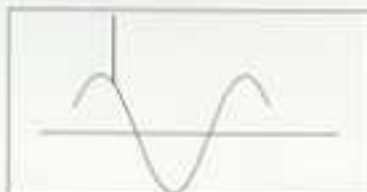
CATALOGUE NUMBER	DESCRIPTION
25SF	250V a.c. 10A Standard Pattern twin power outlet with 30SFM mechanism
2025SF	250V a.c. 10A 2000 Series twin power outlet with 30SFM mechanism

*Overvoltage Arresters

It is important to note that the 30SFM is not designed to absorb overvoltages caused by direct or near vicinity lightning strikes.

In areas where the probability of lightning strikes is high, the Clipsal 970 or the higher capacity 950/4 Overvoltage Arrester should be installed. Both of these products offer high capacity coarse protection on electrical circuits.

Surge Protected Wave-Forms



SPIKE ON WAVE-FORM



SPIKE SAFELY CLAMPED



TRANSIENT OF WAVE-FORM



TRANSIENT SAFELY CLAMPED

Gerard Industries Pty. Ltd.

A.C.N. 007 873 529

Head Office 12 Park Terrace

Bowden, S.A. 5007

Telephone (08) 269 0511

Facsimile (08) 340 1724

Major warehouses and offices in all states

Adelaide (08) 269 0555

Melbourne (03) 481 2422

Sydney (02) 708 2444

Brisbane (07) 267 8044

Darwin (089) 47 0278

Perth (09) 249 4333

Launceston (003) 31 6951