



SIBERIA LED WEATHERPROOF BATTEN

Features

- Installation: Surface mount or suspended
- Optional Sharkward microwave sensor detection suitable for security in residential or commercial applications
- Optional screw-lock stainless clips for additional proofing
- Detachable aluminium gear tray and lanyards for easy maintenance or replacement
- Highly durable PC housing for impact protection
- Translucent opal diffuser w/ antiglare properties and >90% light transmittance
- 20mm cable entry points at both ends
- High quality driver and SMD chips
- Available w/ prewired emergency configurations

Specifications

Installation: Surface mount or suspended
 Body and Diffuser: PC polycarbonate
 Gear Tray: ACD12 aluminium
 Clips and Brackets: 316 stainless steel
 CCT: 5000K
 Light Category: LED - SMD 2835
 SMD Chip Size: 1.0mm²
 Input Voltage: 220-240Vac 50Hz
 Output Voltage: 30-40Vdc (Max. 55V)
 LED Driver: Non-dimmable
 Power Factor: 0.95
 Operating Temp: -5 to 55°C
 Operating Humidity: 0 - 90%
 Ingress Protection: IP65
 Impact Protection: IK08

Application

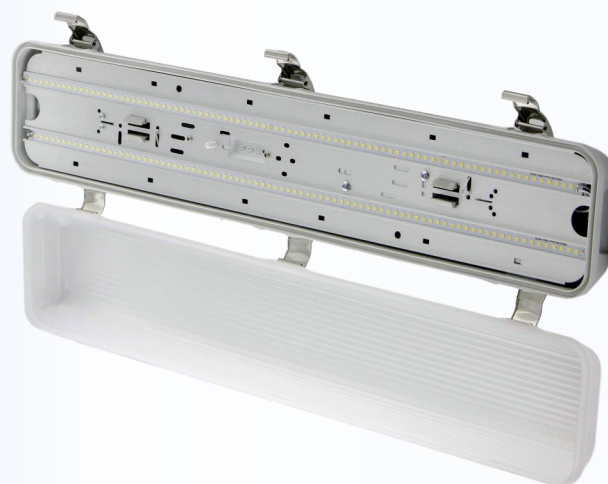
Ideal for domestic, commercial and semi-industrial use ie underground car parks and security walking areas



SENSOR

Sensor Specifications

Sensor Type: Microwave switch (Micro-disconnection)
 Voltage: 220-240V 50/60Hz
 Load: 1000V
 Frequency: 5.8GHz
 Transmission Power: <0.2mW
 Operating °C: +60°C
 Operating Cycles: 100 000 cycles
 F1 Fuse: T6 3AL, 250Vac



Part No.	Watts	Sensor	Lumens	LED Qty	Finish	Length	Width	Height
NLS20241	20W	X	2400lm	168	Grey	650	135mm	95mm
NLS20245	40W	X	4800lm	334	Grey	1250	135mm	95mm
NLS20288	20W	✓	2400lm	168	Grey	650	135mm	95mm
NLS20289	40W	✓	4800lm	334	Grey	1250	135mm	95mm