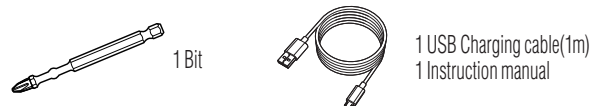


Specifications



No.220USB-1EB No.220USB-S1EB



Model No.	220USB-1EB	220USB-S1EB
Rated voltage	3.6 V DC	
Capacity	800 mAh	
No-load speed	280 min ⁻¹	1200 min ⁻¹
Torque	Electric power (Max.) 2 N·m	0.4 N·m
	Hand operation (Max.)	10 N·m
Weight (not including accessories)	160 g	
Ambient temperature range		
during charging	0°C - 40°C	
during operation* and storage	0°C - 45°C	
Battery	Li-Ion	
Number of battery cells	1	
Charging time	Approx. 60 min	
Number of charges**	Approx. 500 charges	
Charging port	Micro USBType-B	
Noise***	66.1 dB	63.9 dB
Vibration values****	0.421 m/s ²	0.276 m/s ²
Input voltage (max.) and current	5V DC 1A	
Accessories	Bit+2x90mm,USB charging cable(1m)	
Package size (WxHxD)	105mm x 250mm x 75mm	
EDP No.	148518	148519

*Do not charge, use, or store the product at ambient temperature 0°C or less.
 **Actual battery life will vary depending on operating conditions and environments.
 ***According to EN 62841-1 Annex I
 ****According to EN 62841-1 Annex I, EN 62841-2

Applications

Industries	220USB	220USB HI-SPEED	
General electrical work	✓		Installation of box, strut channel, and cable tube. Installation of fire detector and lighting equipment, etc.
Air conditioner installation, Equipment work	✓		Installation and wiring of air conditioner and condenser unit, anchor tightening, etc.
Control panel assembly		✓	Wiring work in switchboards or general industrial boards, installation of terminal blocks or breakers, etc.
Automotive and motorcycle maintenance	✓		Attachment and detachment of instrumental panel, meter panel, or hose retaining hardware.
House interior/exterior work		✓	Installation of fittings of doors and handrails. Installation of various metal fittings such as lighting equipment and door pockets.
Rack assembly/reassembly		✓	Disassembly and assembly of storage rack and production table.
Repair and maintenance of OA equipment		✓	Parts replacement and adjustment work of copy machine, personal computer, etc.

⚠ Cautions ●Be sure to fully read the instruction manual of the product. ●Be careful of the short-circuit accident or electricity shock during electric work. ●Overloaded use may cause damages in screws or injuries. ●Keep away this product from children.

VESSEL Co., Inc.

17-25, Fukae-Kita 2-chome, Higashinari-ku, Osaka 537-0001 JAPAN
 Tel:+ 81 (0)6 6976 7778 Fax:+ 81 (0)6 6972 9441
 E-mail:export@vessel.co.jp URL : www.vessel.co.jp/english/

Distributed by

21091021.01

●Specifications, dimensions, and others, may be subject to change without prior notice.

New

Rechargeable BALL GRIP Screwdriver

No.220USB-1EB
 No.220USB-S1EB

Electric & Manual

Electric-powered quick tightening!!

Manual final tightening!!



Made in Japan



Rechargeable BALL GRIP Screwdriver *New*

Standard Model 220USB-1EB

Equipment installation, wiring instruments, small wood screw tightening!

220USB

Switch

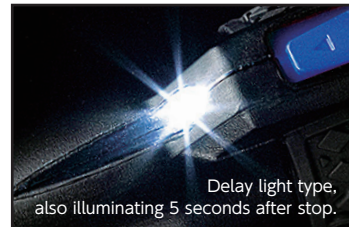
Sliding switch enables to change the rotation direction, either clockwise or counterclockwise, with a light force.



High Brightness LED

LED light

Illuminates in a dark working place.



Delay light type, also illuminating 5 seconds after stop.



USB Recharge USB Recharge

Easy to recharge via USB terminal.



Micro USB type B

POWERFUL ROTATION!!
Electric output torque 2.0N·m!

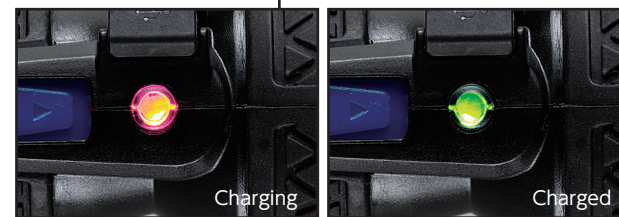
Electric Output
2.0
N·m

No-load Speed
280min⁻¹

Manual Torque
up to **10N·m**

3.6v
800mAh

Battery Charger Lamp
Li-ion Battery



Charging

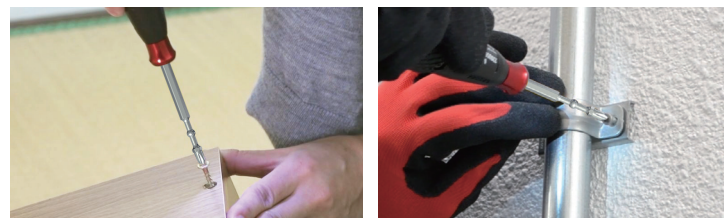
Charged

Overcharge protection

Overdischarge protection

Overcurrent protection

Applications:
General electrical work / Air conditioner installation or equipment work / Automotive and motorcycle maintenance / DIY, etc.



220USB-S1EB **High Speed Model**
Quick screw turning for switchboard work or in a tapped hole!

4 x FASTER than the standard model (220USB-1EB)!

Electric Output
0.4
N·m

No-load Speed
1200min⁻¹

Manual Torque
up to **10N·m**

220USB HI-SPEED

*Due to reduced output torque, the 220USB-S1EB may not be suitable for some wooden works.

Sleeve Chuck

Both double-end and single-end bit can be used.



Highly durable gear built-in.

IMPACT BALL Torsion Bit(1 pc)

- 62HRC tough bit.
- Shock absorption at the ball torsion part.

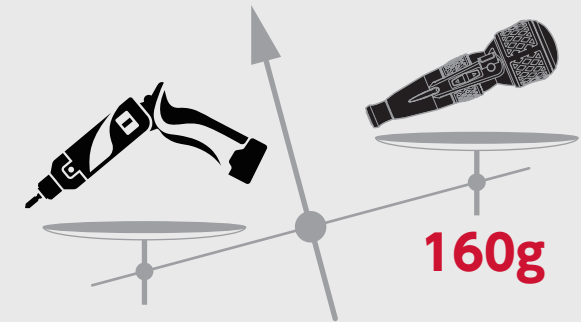
⊕ PH2×90mm ⬡ H6.35mm



Light-weight

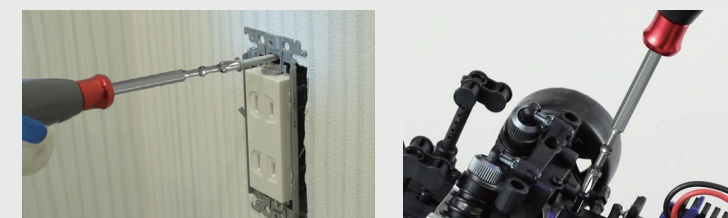
Carry the 220USB in your waist bag.

220USB



160g

Applications:
Switchboard or control panel assembly / Lighting equipment / Rack assembly / OA equipment maintenance, etc.



*The 220USB is a product that "assists" with electric power quick screw turning, and that enables to "manually" tighten to the end. Since the 220USB is not an impact driver, it is prohibited to perform the final screw tightening with the electric power assistant.
*Tightening with excessive force may cause a malfunction. *Compatible screw size is up to M6. The following screws are not used with the 220USB: PH No.3 (M8) or larger, Hex H6 (M8) or larger, or Torx T40 or larger.