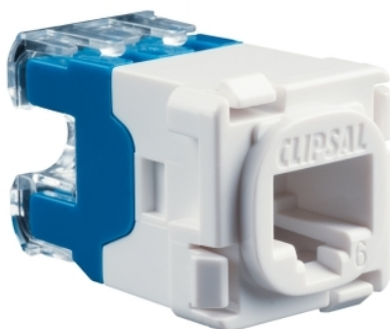


Product data sheet

Characteristics

30RJ45SMA6-WE

SOCKET MODULE CAT6 RJ45



Main

Colour	White electric
Product brand	Clipsal
Range of product	Actassi
Product or component type	Modular jack

Complementary

Colour code	WE
Connector type	110 RJ45
Communication network category	6
Fixing mode	Special tool
AWG gauge	AWG 24...AWG 22
[In] rated current	1.5 A
Material	Phosphor bronze
Depth	35 mm
Width	23 mm
Height	23 mm

Packing Units

Package 1 Weight	10.000 g
Package 1 Height	25.000 mm
Package 1 width	25.000 mm
Package 1 Length	40.000 mm

Offer Sustainability

Sustainable offer status	Green Premium product
EU RoHS Directive	Compliant EU RoHS Declaration
Environmental Disclosure	Product Environmental Profile

The information provided in this documentation contains general descriptions and/or technical characteristics of the performance of the products contained herein. This documentation is not intended as a substitute for and is not to be used for determining suitability or reliability of these products for specific user applications. It is the duty of any such user or integrator to perform the appropriate and complete risk analysis, evaluation and testing of the products with respect to the relevant specific application or use thereof. Neither Schneider Electric Industries SAS nor any of its affiliates or subsidiaries shall be responsible or liable for misuse of the information contained herein.