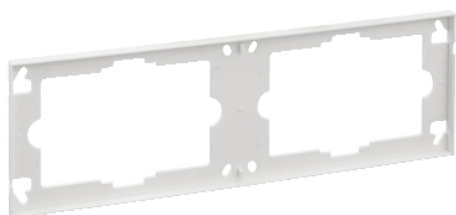


Product data sheet

Characteristics

4000H2-WE

Surround Socket Outlet Saturn - Horizontal - 2-gang - White Electric



Main

Range of product	Saturn Series 4000
Product brand	Clipsal
Colour	White electric

Complementary

Mounting position	Horizontal
Depth	6.9 mm
Width	232 mm
Height	75 mm

Packing Units

Unit Type of Package 1	PCE
Number of Units in Package 1	1
Package 1 Weight	31.0 g
Package 1 Height	0.8 cm
Package 1 width	7.5 cm
Package 1 Length	23.1 cm
Unit Type of Package 2	CAR
Number of Units in Package 2	100
Package 2 Weight	100.0 kg
Package 2 Height	19 cm
Package 2 width	20.3 cm
Package 2 Length	47.5 cm
Unit Type of Package 3	BB1
Number of Units in Package 3	25
Package 3 Weight	25.0 kg
Package 3 Height	9 cm
Package 3 width	19 cm
Package 3 Length	24 cm

The information provided in this documentation contains general descriptions and/or technical characteristics of the performance of the products contained herein. This documentation is not intended as a substitute for and is not to be used for determining suitability or reliability of these products for specific user applications. It is the duty of any such user or integrator to perform the appropriate and complete risk analysis, evaluation and testing of the products with respect to the relevant specific application or use thereof. Neither Schneider Electric Industries SAS nor any of its affiliates or subsidiaries shall be responsible or liable for misuse of the information contained herein.

Offer Sustainability

Sustainable offer status	Green Premium product
REACH Regulation	REACH Declaration
EU RoHS Directive	Pro-active compliance (Product out of EU RoHS legal scope) EU RoHS Declaration
Mercury free	Yes
RoHS exemption information	Yes
China RoHS Regulation	China RoHS Declaration
Environmental Disclosure	Product Environmental Profile