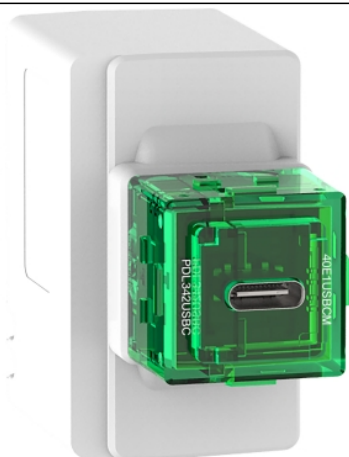


Product data sheet

Characteristics

40E1USBCM-VW

Clipsal Iconic, USB Type C, Fast charger module, 40-Series, 25W, 220-240V AC, vivid white



Main

Range	Clipsal Iconic
Product or component type	USB charger
[Ue] rated operational voltage	220/240 V AC 50 Hz
Integrated connection type	1 USB type C 5 V DC, maximum load current: 3 A 1 USB type C 9 V DC 1 USB type C 12 V DC 1 USB type C 15 V DC
Maximum load current with 2 outputs used simultaneously	3 A

Complementary

Device mounting	Flush
Device presentation	Mechanism
Colour tint	Vivid white (VW)
Surface finish	Glossy
Fixing mode	Clipped
Power consumption in W	25 W
Protection type	Thermal fuse
Height	27 mm
Width	56 mm
Embedding depth	55 mm

Environment

Product certifications	RCM
------------------------	-----

Contractual warranty

Warranty	2 years
----------	---------

The information provided in this documentation contains general descriptions and/or technical characteristics of the products of the products contained herein. This documentation is not intended as a substitute for and is not to be used for determining suitability or reliability of these products for specific user applications. It is the duty of any such user or integrator to perform the appropriate and complete risk analysis, evaluation and testing of the products with respect to the relevant specific application or use thereof. Neither Schneider Electric Industries SAS nor any of its affiliates or subsidiaries shall be responsible or liable for misuse of the information contained herein.