

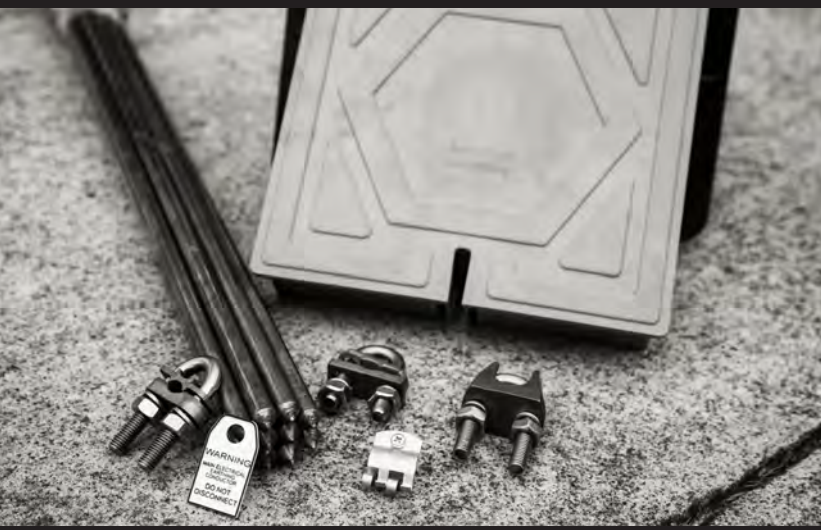


TUFFSTUFF

TRADE SOLUTIONS

PRODUCT CATALOGUE

Version 2



A pair of hands is shown holding a glowing lightbulb. The lightbulb is illuminated from within, casting a warm, yellowish glow. The hands are positioned around the base and sides of the bulb, with fingers visible. The background is dark and out of focus, emphasizing the lightbulb and the hands. The overall mood is one of care, attention, and reliability.

We are an Australian owned company that believes in reliability, quality and service. We believe in investing in our customers and through our committed, dedicated and professional approach we provide an incomparable service.

We offer a large range of trade solutions for the Electrical and Construction Industries, from cable protection, earthing products through to an extensive range of conduits and electrical accessories.

All of our products are rigorously tested and are backed by all relevant standards ensuring the utmost quality and safety.

By choosing to buy from TuffStuff you are choosing to align your company with a business that values every customer no matter how big or small. In true TuffStuff style you will always be greeted with a smile and friendly enthusiasm.

CONTENTS

SOLAR

PVC Corrugated Solar Conduit	6
PVC Rigid Solar Conduit	6
PVC Rigid Solar Conduit Accessories	6
Solar Installation Kits	7
Tools	7
Staubli MC4 Connectors	7
MC4 Connectors	7
SS Solar Clips	8
Solar Cable Ties	8
Premium Multi Hole Solar IP68 Cable Glands	8
Solar Multi Hole Inserts for Nylon Glands	8
Solar Plugs	9
Solar Cable Gland to Conduit Couplings	9
Solar Corrugated Conduit Connectors	9
Dektites	9
Silicone / Firestop	10
PVC Electricians Tape	10
Solar DC Warning Tape	10
Solar Saddles	10
Window Packers	11
Label Kits	12

CONDUIT

Galvanised Steel Screwed Conduit	14
Stainless Steel Screwed Conduit	14
Grey PVC Flex Conduit	14
Orange PVC Flex Conduit with Draw Wire	15
Black PVC Flex Conduit with Draw Wire	15
PVC Corrugated Solar Conduit	16
PVC Corrugated Conduit	16
PVC Solar Rigid Conduit	16
Steel Galvanised Accessories	17
PVC Rigid Solar Accessories	19

BLACK HFT LSZH CONDUITS & FITTINGS

Black HFT LSZH Rigid Conduit MD	23
Black HFT LSZH Corrugated Conduit MD	23
Black HFT LSZH Waterproof Adaptable Box	23
Black HFT LSZH Single Switch Box 77	24
Black HFT LSZH 1299 Double Switch Box	24
Black HFT LSZH CK Double Switch Box	24
Black HFT LSZH Cement	24
Black HFT LSZH Shallow Junction Box	25
Black HFT LSZH Deep Junction Box	25
Black HFT LSZH Bends	26
Black HFT LSZH Solid Elbow	26
Black HFT LSZH Couplers	26
Black HFT LSZH Male Adapter	26
Black HFT LSZH Clips	26

GREEN STAR CONDUIT (INDENT ONLY)

Grey Electrical Conduit Rigid MD	28
Orange Electrical Conduit Rigid HD	28
White Communications Conduit Rigid MD	28
White Communications Corrugated Conduit MD	28
Grey Electrical Corrugated Conduit MD	29
Orange Electrical Corrugated Conduit HD	29
Grey Solar Corrugated Conduit	29
Accessories Selection Chart	30

CABLE TIES / GLANDS

Premium Nylon Cable Ties	32
Premium Nylon Cable Ties (1000 Packs)	32
Metal Tongue Cable Ties	33
Metal Detectable Cable Ties	33
Solar Cable Ties	33
316 Grade Stainless Steel Cable Ties	34
Fully Coated 316 Grade Stainless Steel Cable Ties	34
Cable Tie Guns	35
Hook & Loop Cable Ties / Rolls	35
Adhesive Cable Tie Mounts	35
Masonry Cable Tie Mounts	36
Premium Nylon IP68 Cable Glands	36
Premium Multi Hole Solar IP68 Cable Glands	36
Solar Multi Hole Inserts for Nylon Glands	37
Solar Plugs	37
Solar Cable Gland to Conduit Couplings	37
Solar Corrugated Conduit Connectors	38
Metal IP68 Cable Glands	38
EMC IP68 Cable Glands	39
PEX Brass Glands	39
- Type A2 PVC Compression	39
- Type CW Steel Wire Armour	40
Shrouds	40
- PEX-A2 Glands	40
- PEX-CW Glands	41
Earth Tags	41
Snap Bushings	41
Metal Lock Nuts	42
Nylon Lock Nuts	42

SCREWS / FASTENERS

Nail In Clips	44
Spring / Girder Clips	44
Metal Saddles	44
- Zinc	44
- Hot Dipped Gal	45
- 316 Grade Stainless Steel	45
PVC Wall Plugs	45
Nylon & Zinc Plasterfix	46
Bugle Head Needle Point Screws	46
Pan Head Needle Point Screws	47
Button Head Self Drilling Screws	48
Washer Head Needle Point Screws	48
Wafer Head Self Drilling Screws	48
Pit Screw Stainless Steel Hex Head Screws	49
Spring Toggles	49
Metal Hex Nuts	49
Metal Flat Washers	49
Metal Thread Screws	50
Roofing Bolts with Nut	50
Nail In Anchors	51
- Countersunk	51
- Mushroom Head	51
- Round Head	51

CONTENTS

HEATSHRINK

Thin Wall Tubing Lengths	54
Thin Wall Tubing Rolls	54
Glue Lined Thin Wall Tubing	55
Glue Lined Medium Wall Tubing	55
Breakout Boots Glue Lined	56
End Caps Glue Lined	56

LUGS / LINKS / CONNECTORS

Brass Line Taps	58
Junction Boxes	58
Screw Connectors	58
Flared Entry Copper Crimp Lugs	59
Circuit Breaker Narrow Palm Lugs	61
Long Barrel Copper Crimp Lugs	62
Long Palm & Long Barrel Copper Crimp Lugs	62
Bi Metal Crimp Lugs	63
Copper Crimp Links	64
Copper Reducing Links	65
Aluminium Crimp Type Lugs	66
Aluminium Crimp Type Links	66
Boot Lace Connector (cord ends)	67
- Insulated	67
- Twin Insulated	67
Crimpers	67
Staubli MC4 Connectors	68
MC4 Connectors	68

UNDERGROUND CABLE PROTECTION / TAPES / WARNING TAPES

Underground Electrical Warning Tape	70
Underground Communication Warning Tape	70
Detectable Underground Warning Tape	70
Underground Hard Cable Cover	70
Warning & Danger Tapes	71
Safety Bunting Flags	71
PVC Electricians Tape	71
PVC Duct Tape	72
Solar DC Warning Tape	72
Temporary Construction Tape	72

ELECTRICAL ACCESSORIES / SILICONE

Pull Line Rope	74
Telstra Rope	74
Catenary Wire	74
Catenary Wire Accessories	74
- Thimbles	74
- Wire Rope Grips	74
- D Shackles	75
- Turnbuckles	75
Cable Lube	75
Silicones / Firestop	75
Liquid Adhesive (Nail-IT)	75
Expandable Gap Fillers & Foam	75
Dektites	76
Fish Rods / Yellow Tongue	76
SS Solar Clips	76
Disposable Face Masks	76
Jack Chain	77
Extreme Magnets	77

EARTHING / RODS

Earth Rods	80
Earth Pits	80
Earth Clamps	80



Staubli Genuine MC4 Connectors
Pg.7 & 68



PVC Rigid Solar Conduit Pg.6 & 16



PVC Rigid Solar Conduit Accessories Pg.6 & 19



SS Solar Clips Pg.8 & 76



Solar Gland to Conduit Couplings
Pg.9 & 37



Window Packers Pg.11



Solar Corrugated Conduit Connectors Pg.9 & 38



Label Kits Pg.12



Dektites Pg.9 & 76



Solar DC Warning Tape Pg.10 & 72



Solar Saddles Pg.10



Solar Multi Hole Inserts Pg.8 & 37



Premium Multi Hole Solar IP68 Cable Glands Pg. 8 & 36



Solar Installation Kits Pg.7



Copper Reducing Links Pg.65

WHAT'S IN OUR RANGE? SOLAR



Solar Cable Tie Pg.8 & 33



Metal Tongue Cable Tie Pg.33



Metal Detectable Cable Tie Pg.33



PVC Electricians Tape Pg.10 & 71



PVC Duct Tape Pg.72



Temporary Construction Tape Pg.72



Fish Rods & Yellow Tongue Pg.76



Silicone / Firestop Pg.10 & 75



Expandable Gap Filler & Foam Pg.75



Nail-IT (Liquid Nails) Pg.75



Cable Lube Pg.75



PVC & SWA Metal Glands Pg.39 & 40



EMC IP68 Glands Pg.39



Boot Lace Connectors (Cord Ends) Pg.67



Snap Bushings Pg.41

SOLAR

PVC Corrugated Solar Conduit
PVC Rigid Solar Conduit
PVC Rigid Solar Accessories
Installation Kits
Tools
Staubli MC4 Connectors
MC4 Connectors
SS Solar Clips
Solar Cable Ties
Premium Multi Hole Solar IP68 Cable Glands
Solar Multi Hole Inserts for Nylon Glands
Solar Plugs
Solar Cable Gland to Conduit Couplings
Solar Corrugated Conduit Connectors
Dektites
Silicone / Firestop
PVC Electricians Tape
Solar DC Warning Tape
Solar Saddles
Window Packers
Label Kits

PVC Corrugated Solar Conduit (AS/NZS-2053.5-2001 Approved)

TuffStuff PVC Solar Conduit is heavy duty
High UV Resistant
Flame Retardant

PART NUMBER	DESCRIPTION	SIZE	COLOUR	PACK QTY	PRICING UNIT
SC2550HD	PVC Heavy Duty Corrugated Solar Conduit	25.0mm x 50m	Grey	Coil	Each
SC2550MD	PVC Medium Duty Corrugated Solar Conduit	25.0mm x 50m	Grey	Coil	Each



PVC Rigid Solar Conduit

PART NUMBER	DESCRIPTION	SIZE	COLOUR	PACK QTY	PRICING UNIT
SCR25	Heavy Duty UV Protected PVC Rigid Solar Conduit	25.0mm x 4m	Grey	Length	Each



PVC Rigid Solar Accessories

PART NUMBER	DESCRIPTION	SIZE	COLOUR	PACK QTY	PRICING UNIT
SOLAMR	Male Conduit Reducer	25.0mm	Grey	1	Each
SOLAMF	Male & Female Conduit Bush	25.0mm	Grey	1	Each
SOLAC	Solid Coupler	25.0mm	Grey	1	Each
SOLAM	Plain to Screwed Adaptor Male	25.0mm	Grey	1	Each
SOLA1F	Plain to Screwed Adaptor Female	25.0mm	Grey	1	Each
SOLAFA	Flex Adaptor	25.0mm	Grey	1	Each
SOLJBOX1	Round Small Junction Box 1 Way	25.0mm	Grey	1	Each
SOLJBOX2	Round Small Junction Box 2 Way	25.0mm	Grey	1	Each
SOLJBOX2A	Small Junction Box 2 Way 90 Degree Angled	25.0mm	Grey	1	Each
SOLJBOX3	Round Small Junction Box 3 Way	25.0mm	Grey	1	Each
SOLJBOX4	Round Small Junction Box 4 Way	25.0mm	Grey	1	Each
SOLT	Solid Tee	25.0mm	Grey	1	Each
SOLIT	Inspection Tee	25.0mm	Grey	1	Each
SOLE	Elbow	25.0mm	Grey	1	Each
SOLIE	Inspection Elbow	25.0mm	Grey	1	Each
SOLSB	Sweep Bend	25.0mm	Grey	1	Each
SOLSBH	Heavy Duty Sweep Bend	25.0mm	Grey	1	Each
SOLFS25P	PVC Full Saddle	25.0mm	Grey	50	Tub

SOLAMR



SOLAMF



SOLAC



SOLAM



SOLA1F



SOLAFA



Installation Kits

PART NUMBER	DESCRIPTION	SIZE	PACK QTY	PRICING UNIT
SOLKIT1	Installation Tool Kit	Male + Female MC4 Connector with Pins Ratchet Crimper 6mm Cable Cutter Wire Stripper 2 * MC4 Spanners	1	Each
SOLKIT2	Installation Tool Kit	Premium Crimping Tool with extra jaws Spring Loaded Wire Stripper 1 * Phillips Head Screw Driver 1 * Slot/Flat Head Screw Driver 2 * MC4 Spanners 1 * 6mm Cable Cutter	1	Each



Tools

PART NUMBER	DESCRIPTION	SIZE	PACK QTY	PRICING UNIT
SOLCRIMP1	ECO Crimper MC4	2.5mm - 6.0mm	1	Each
SOLCRIMP2	Premium Crimper MC4	2.5mm - 6.0mm	1	Each
SOLCUT1	Cable Cutter	6.0mm	1	Each
SOLCUT38	Cable Cutter	38.0mm	1	Each
SOLCUT60	Cable Cutter	60.0mm	1	Each
SOLSTRIP1	Cable Stripper	0.5mm - 2.0mm	1	Each
SOLSTRIP2	Cable Stripper	1.0mm - 3.2mm	1	Each
SOLSTRIP3	Cable Stripper Parrot Beak	0.5mm - 6.0mm	1	Each
SOLSPAN1	Spanner for MC4 1000V	N/A	1	Each
SOLSPAN2	Spanner for MC4 1500V	N/A	1	Each

SOLCUT60



SOLCRIMP2



SOLSTRIP3



SOLSPAN1



Staubli MC4 Connectors

PART NUMBER	DESCRIPTION	SIZE	PACK QTY	PRICING UNIT
MC4-MF1000S	1000V Male & Female Genuine Pair	2.5mm - 4.0mm	1 Pair	Pair
MC4-MF1500S	1500V Male & Female Genuine Pair	4.0mm - 6.0mm	1 Pair	Pair



MC4 Connectors

PART NUMBER	DESCRIPTION	SIZE	PACK QTY	PRICING UNIT
MC4-MF1000	1000V Male & Female Pair	2.5mm - 4.0mm	10 Pair	Pair
MC4-MF1500	1500V Male & Female Pair	4.0mm - 6.0mm	10 Pair	Pair
MC4-B-1000	1000V 2 Way Branch Connector	2.5mm - 4.0mm	1 Pair	Pair
MC4-B-1500	1500V 2 Way Branch Connector	4.0mm - 6.0mm	1 Pair	Pair



SS Solar Clips

PART NUMBER	DESCRIPTION	SIZE	PACK QTY	PRICING UNIT
SOLCLIP	SS Solar Clip	10.0mm width	100	Each
SOLCLIP-L	SS Solar Clip	18.0mm width	100	Each



Solar Cable Ties

PART NUMBER	DESCRIPTION	SIZE	PACK QTY	PRICING UNIT
SOLCT300B	UV Black Nylon Cable Tie	300mm x 4.8mm	100	Bag
SOLRCT360	316 Grade Stainless Steel Roller Ball Tie	360mm x 4.6mm	100	Bag
SOLRCT360C	316 Grade Coated Stainless Steel Roller Ball Tie	360mm x 4.6mm	100	Bag
SOLLCT335	316 Grade Stainless Steel Ladder Tie	335mm x 7.0mm	100	Bag
SOLLCT335C	316 Grade Coated Stainless Steel Ladder Tie	335mm x 7.0mm	100	Bag



"NEW"

Premium Multi Hole Solar IP68 Cable Glands

TuffStuff Premium Multi Hole Solar IP68 Cable Glands offer perfect protection for cable termination
 Manufactured from virgin nylon 66 with neoprene seal
 Wide cable acceptance
 Supplied with locknut

PART NUMBER	DESCRIPTION	THREAD SIZE	MIN SIZE MAX SIZE	PACK QTY	PRICING UNIT
SOL25S-2	Solar Gland Multi Hole 2 way	25.0mm	3.5mm - 5.7mm	15	Each
SOL25L-2	Solar Gland Multi Hole 2 way	25.0mm	4.3mm - 6.1mm	15	Each
SOL25S-3	Solar Gland Multi Hole 3 way	25.0mm	3.6mm - 5.2mm	15	Each
SOL25L-3	Solar Gland Multi Hole 3 way	25.0mm	6.2mm - 8.0mm	15	Each
SOL25S-4	Solar Gland Multi Hole 4 way	25.0mm	3.8mm - 5.2mm	15	Each
SOL25L-4	Solar Gland Multi Hole 4 way	25.0mm	5.6mm - 7.3mm	15	Each
SOL25L-5	Solar Gland Multi Hole 5 way	25.0mm	4.6mm - 6.0mm	15	Each



Solar Multi Hole Inserts for Nylon Glands

PART NUMBER	Description/Holes	THREAD SIZE	CABLE RANGE	PACK QTY	PRICING UNIT
SOLIN-2A	Solar Insert 2 holes	25.0mm	2.5mm - 3.5mm	1	Each
SOLIN-2F	Solar Insert 2 holes	25.0mm	6.4mm - 8.7mm	1	Each
SOLIN-3A	Solar Insert 3 holes	25.0mm	2.6mm - 3.6mm	1	Each
SOLIN-3C	Solar Insert 3 holes	25.0mm	4.8mm - 6.2mm	1	Each
SOLIN-4B	Solar Insert 4 holes	25.0mm	2.0mm - 3.1mm	1	Each
SOLIN-4D	Solar Insert 4 holes	25.0mm	3.0mm - 4.1mm	1	Each
SOLIN-5C	Solar Insert 5 holes	25.0mm	2.6mm - 3.6mm	1	Each
SOLIN-5E	Solar Insert 5 holes	25.0mm	3.6mm - 4.6mm	1	Each



Solar Plugs

PART NUMBER	DESCRIPTION	SIZE	PACK QTY	PRICING UNIT
SP-5	Solar Hole Plug	5.0mm	1	Each
SP-6	Solar Hole Plug	6.5mm	1	Each
SP-7	Solar Hole Plug	7.0mm	1	Each
SP-8	Solar Hole Plug	8.0mm	1	Each



Solar Cable Gland to Conduit Couplings

PART NUMBER	DESCRIPTION	THREAD SIZE	MIN SIZE MAX SIZE	PACK QTY	PRICING UNIT
SOLCF25-25C	Solar Gland to Solar Corrugated Conduit Connector	25.0mm	1.3mm - 1.8mm	1	Each
SOL25S-2C	Solar Gland to Solar Corrugated Conduit Connector	25.0mm	3.5mm - 5.1mm	1	Each
SOL25L-2C	Solar Gland to Solar Corrugated Conduit Connector	25.0mm	5.1mm - 6.5mm	1	Each
SOL25S-3C	Solar Gland to Solar Corrugated Conduit Connector	25.0mm	3.6mm - 5.2mm	1	Each
SOL25L-3C	Solar Gland to Solar Corrugated Conduit Connector	25.0mm	6.2mm - 8.0mm	1	Each
SOL25S-4C	Solar Gland to Solar Corrugated Conduit Connector	25.0mm	3.8mm - 5.2mm	1	Each
SOL25L-4C	Solar Gland to Solar Corrugated Conduit Connector	25.0mm	5.6mm - 7.3mm	1	Each
SOL25L-5C	Solar Gland to Solar Corrugated Conduit Connector	25.0mm	4.6mm - 6.0mm	1	Each



Solar Corrugated Conduit Connectors

PART NUMBER	DESCRIPTION	SIZE	PACK QTY	PRICING UNIT
SOLFC20	20mm - 20mm Conduit Connector	20.0mm	1	Each
SOLFC25	25mm - 25mm Conduit Connector	25.0mm	1	Each
SOLFC32	32mm - 32mm Conduit Connector	32.0mm	1	Each



Dektites

PART NUMBER	DESCRIPTION	BASE SIZE	SIZE	PACK QTY	PRICING UNIT
D35	Roof Flashing EPDM & Aluminium Flashing	100.0mm x 100.0mm	0.0mm - 35.0mm	1	Each
DS35	Roof Flashing EPDM & Aluminium Base	100.0mm x 100.0mm x 50.0mm	0.0mm - 49.0mm	1	Each
DA35L	Roof Flashing EPDM + Lead Zinc Sheet + Butyl Tape	450.0mm x 280.0mm	0.0mm - 35.0mm	1	Each
DA55	Roof Flashing EPDM & Aluminium Flashing	135.0mm x 135.0mm x 50.0mm	5.0mm - 55.0mm	1	Each



DA35



DS35



DA35L



DA55

Silicone / Firestop

PART NUMBER	DESCRIPTION	COLOUR	SIZE	PACK QTY	PRICING UNIT
SOLSIL	High UV Protected Roof & Gutter	Clear	300ml	24	Each
SOLFIRE	Firestop Conforms with ASNZS	White	300ml	24	Each



PVC Electricians Tape

PART NUMBER	DESCRIPTION	COLOUR	SIZE	PACK QTY	PRICING UNIT
INSBK	PVC Insulation Tape	Black	18.0mm x 20m	10	Tube
INSY/GN	PVC Insulation Tape	Yellow / Green	18.0mm x 20m	10	Tube



Solar DC Warning Tape

PART NUMBER	DESCRIPTION	SIZE	PACK QTY	PRICING UNIT
DCW	DC Warning Tape - Red	45.0mm x 50m	6	Roll



Solar Saddles

TuffStuff Saddles are made only from strong steel or PVC
 Offering the perfect solution for all your cable and conduit management needs
 Offering 6.5mm fixing holes on each size for extra strength
 Supplied in a handy plastic tub

HALF	FULL	TYPE	SIZE	PACK QTY	PRICING UNIT
SOLHS25Z	SOLFS25Z	Zinc	25.0mm	50	Tub
SOLHS25HD	SOLFS25HD	Hot Dipped Gal	25.0mm	50	Tub
SOLHS25SS	SOLFS25SS	316 Grade S/S	25.0mm	50	Tub
N/A	SOLFS25P	PVC	25.0mm	50	Tub



Window Packers

PART NUMBER	DESCRIPTION	COLOUR	SIZE	PACK QTY	PRICING UNIT
WP175	Window Packers	Red	1.0mm x 75.0mm	50	Bag
WP-1575	Window Packers	Blue	1.5mm x 75.0mm	50	Bag
WP375	Window Packers	Green	3.2mm x 75.0mm	50	Bag
WP575	Window Packers	Ochre	5.0mm x 75.0mm	50	Bag
WP675	Window Packers	Grey	6.4mm x 75.0mm	50	Bag
WP1075	Window Packers	Black	10.0mm x 5.0mm	50	Bag
WP1575	Window Packers	Orange	15.0mm x 5.0mm	50	Bag
WP2075	Window Packers	Pink	20.0mm x 5.0mm	50	Bag
WP190	Window Packers	Blue	1.5mm x 90.0mm	50	Bag
WP390	Window Packers	Green	3.2mm x 90.0mm	50	Bag
WP590	Window Packers	Ochre	5.0mm x 90.0mm	50	Bag
WP690	Window Packers	Grey	6.4mm x 90.0mm	50	Bag
WP1090	Window Packers	Black	10.0mm x 90.0mm	50	Bag
WP1590	Window Packers	Orange	15.0mm x 90.0mm	50	Bag
WP2090	Window Packers	Pink	20.0mm x 90.0mm	50	Bag
WP175B	Window Packers	Red	1.0mm x 75.0mm	900	Bucket
WP1575B	Window Packers	Blue	1.5mm x 75.0mm	850	Bucket
WP375B	Window Packers	Green	3.2mm x 75.0mm	500	Bucket
WP575B	Window Packers	Ochre	5.0mm x 75.0mm	350	Bucket
WP675B	Window Packers	Grey	6.4mm x 75.0mm	300	Bucket
WP1075B	Window Packers	Black	10mm x 75.0mm	220	Bucket
WPMIXEDB	Window Packers	Mixed	200: 1.0mm x 75.0mm 100: 1.5mm x 75.0mm 100: 3.2mm x 75.0mm 100: 5.0mm x 75.0mm 50: 6.4mm x 75.0mm 50: 10.0mm x 75.0mm	600	Bucket



Label Kits

PART NUMBER	DESCRIPTION	CONTENTS	PACK QTY	PRICING UNIT
LABK-1	Main Commercial Label Kit	Solar array on roof * 1 Solar DC cables * 2 Warning dual supply * 2 PV array * 2 Warning this premise contains * 1 Solar supply * 1 Solar earth * 4 PV * 1 Inverter Location * 1 Main Switch * 3 Shutdown procedure * 1	21	Bag
LABK-2	Main Micro Inverter Label Kit	AC Solar array on roof * 1 Warning dual supply * 2 Warning this premise contains * 1 Solar system shutdown procedure * 1 Solar earth * 4 Inverter location * 1 Solar supply * 2 Solar AC cables * 2 Main Switch * 3	13	Bag
LABK-3	Main PV Label Kit	Shutdown procedure * 1 Warning multiple supplies * 1 Warning DC * 3 PV * 1 Solar array on roof * 1 Main switch * 2 PV array DC isolator * 2 Inverter AC isolator * 1 Inverter location * 1	13	Bag



Australian Made on request



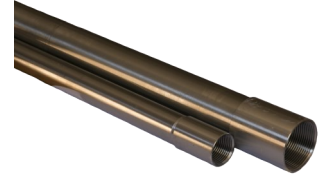
CONDUIT

- Galvanised Steel Screwed Conduit
- Stainless Steel Screwed Conduit
- Grey PVC Flex Conduit
- Orange PVC Flex Conduit with Draw Wire
- Black PVC Flex Conduit with Draw Wire
- PVC Corrugated Solar Conduit
- PVC Corrugated Conduit
- PVC Solar Rigid Conduit
- Steel Galvanised Accessories
- PVC Rigid Solar Accessories

Galvanised Steel Screwed Conduit (AS/NZS-2053-7-1995 Approved)

TuffStuff Galvanised Steel Screwed Conduit is AS/NZS Class 4 approved
Supplied with a coupling and a cap for easy installation and added protection

PART NUMBER	DESCRIPTION	SIZE	PACK QTY	PRICING UNIT
HDSC20	20mm Heavy Duty Steel Conduit Hot Dipped Gal	20.0mm x 4m	10	Length
HDSC25	25mm Heavy Duty Steel Conduit Hot Dipped Gal	25.0mm x 4m	7	Length
HDSC32	32mm Heavy Duty Steel Conduit Hot Dipped Gal	32.0mm x 4m	5	Length
HDSC40	40mm Heavy Duty Steel Conduit Hot Dipped Gal	40.0mm x 4m	3	Length
HDSC50	50mm Heavy Duty Steel Conduit Hot Dipped Gal	50.0mm x 4m	3	Length



Stainless Steel Screwed Conduit

TuffStuff Stainless Steel Conduit is AS/NZS Class 4 approved
Manufactured from 316 Grade Stainless Steel
Supplied with a coupling and a cap for easy installation and added protection

PART NUMBER	DESCRIPTION	SIZE	PACK QTY	PRICING UNIT
SSSC20	20mm Screwed Conduit 316 Stainless Steel	20.0mm x 3m	1	Length
SSSC25	25mm Screwed Conduit 316 Stainless Steel	25.0mm x 3m	1	Length
SSSC32	32mm Screwed Conduit 316 Stainless Steel	32.0mm x 3m	1	Length
SSSC40	40mm Screwed Conduit 316 Stainless Steel	40.0mm x 3m	1	Length
SSSC50	50mm Screwed Conduit 316 Stainless Steel	50.0mm x 3m	1	Length



Grey PVC Flex Conduit (AS/NZS 2053-2001 Approved)

TuffStuff PVC Flex Conduit offers sturdy but flexible protection for cables

PART NUMBER	DESCRIPTION	SIZE	COLOUR	PRICING UNIT
FC16G-15M	16mm PVC Flexible Conduit	16.0mm x 15m	Grey	Coil
FC16G-30M	16mm PVC Flexible Conduit	16.0mm x 30m	Grey	Coil
FC20G-15M	20mm PVC Flexible Conduit	20.0mm x 15m	Grey	Coil
FC20G-30M	20mm PVC Flexible Conduit	20.0mm x 30m	Grey	Coil
FC25G-15M	25mm PVC Flexible Conduit	25.0mm x 15m	Grey	Coil
FC25G-30M	25mm PVC Flexible Conduit	25.0mm x 30m	Grey	Coil
FC32G-10M	32mm PVC Flexible Conduit	32.0mm x 10m	Grey	Coil
FC32G-30M	32mm PVC Flexible Conduit	32.0mm x 30m	Grey	Coil
FC40G-10M	40mm PVC Flexible Conduit	40.0mm x 10m	Grey	Coil
FC40G-30M	40mm PVC Flexible Conduit	40.0mm x 30m	Grey	Coil
FC50G-10M	50mm PVC Flexible Conduit	50.0mm x 10m	Grey	Coil
FC50G-30M	50mm PVC Flexible Conduit	50.0mm x 30m	Grey	Coil
FC63G-10M	63mm PVC Flexible Conduit	63.0mm x 10m	Grey	Coil



Orange PVC Flex Conduit with Draw Wire (AS/NZS 2053-2001 Approved)

TuffStuff PVC Flex Conduit offers sturdy but flexible protection for cables. **Made to Order.**

PART NUMBER	DESCRIPTION	SIZE	COLOUR	PRICING UNIT
FC160-15M	16mm Flexible Conduit PVC Orange	16.0mm x 15m	Orange	Coil
FC160-30M	16mm Flexible Conduit PVC Orange	16.0mm x 30m	Orange	Coil
FC200-15M	20mm Flexible Conduit PVC Orange	20.0mm x 15m	Orange	Coil
FC200-30M	20mm Flexible Conduit PVC Orange	20.0mm x 30m	Orange	Coil
FC250-15M	25mm Flexible Conduit PVC Orange	25.0mm x 15m	Orange	Coil
FC250-30M	25mm Flexible Conduit PVC Orange	25.0mm x 30m	Orange	Coil
FC320-10M	32mm Flexible Conduit PVC Orange	32.0mm x 10m	Orange	Coil
FC320-30M	32mm Flexible Conduit PVC Orange	32.0mm x 30m	Orange	Coil
FC400-10M	40mm Flexible Conduit PVC Orange	40.0mm x 10m	Orange	Coil
FC400-30M	40mm Flexible Conduit PVC Orange	40.0mm x 30m	Orange	Coil
FC500-10M	50mm Flexible Conduit PVC Orange	50.0mm x 10m	Orange	Coil
FC500-30M	50mm Flexible Conduit PVC Orange	50.0mm x 30m	Orange	Coil
FC630-10M	63mm Flexible Conduit PVC Orange	63.0mm x 10m	Orange	Coil



Black PVC Flex Conduit with Draw Wire (AS/NZS 2053-2001 Approved)

TuffStuff PVC Flex Conduit offers sturdy but flexible protection for cables. **Made to Order.**

PART NUMBER	DESCRIPTION	SIZE	COLOUR	PRICING UNIT
FC16B-15M	16mm Flexible Conduit PVC Black	16.0mm x 15m	Black	Coil
FC16B-30M	16mm Flexible Conduit PVC Black	16.0mm x 30m	Black	Coil
FC20B-15M	20mm Flexible Conduit PVC Black	20.0mm x 15m	Black	Coil
FC20B-30M	20mm Flexible Conduit PVC Black	20.0mm x 30m	Black	Coil
FC25B-15M	25mm Flexible Conduit PVC Black	25.0mm x 15m	Black	Coil
FC25B-30M	25mm Flexible Conduit PVC Black	25.0mm x 30m	Black	Coil
FC32B-10M	32mm Flexible Conduit PVC Black	32.0mm x 10m	Black	Coil
FC32B-30M	32mm Flexible Conduit PVC Black	32.0mm x 30m	Black	Coil
FC40B-10M	40mm Flexible Conduit PVC Black	40.0mm x 10m	Black	Coil
FC40B-30M	40mm Flexible Conduit PVC Black	40.0mm x 30m	Black	Coil
FC50B-10M	50mm Flexible Conduit PVC Black	50.0mm x 10m	Black	Coil
FC50B-30M	50mm Flexible Conduit PVC Black	50.0mm x 30m	Black	Coil
FC63B-10M	63mm Flexible Conduit PVC Black	63.0mm x 10m	Black	Coil



PVC Corrugated Solar Conduit (AS/NZS-2053.5-2001 Approved)

TuffStuff PVC Solar Conduit is heavy duty
High UV Resistant
Flame Retardant

PART NUMBER	DESCRIPTION	SIZE	COLOUR	PACK QTY	PRICING UNIT
SC2550HD	PVC Heavy Duty Corrugated Solar Conduit	25.0mm x 50m	Grey	1	Coil
SC2550MD	PVC Medium Duty Corrugated Solar Conduit	25.0mm x 50m	Grey	1	Coil



PVC Corrugated Conduit (AS/NZS-2053.5-2001 Approved)

TuffStuff PVC Corrugated Conduit is UV Resistant which offers reliable protection in the harshest environments

PART NUMBER	DESCRIPTION	SIZE	COLOUR	PACK QTY	PRICING UNIT
GMD1610	PVC Corr Conduit Medium Duty	16.0mm x 10m	Grey	1	Coil
GMD1650	PVC Corr Conduit Medium Duty	16.0mm x 50m	Grey	1	Coil
GMD2010	PVC Corr Conduit Medium Duty	20.0mm x 10m	Grey	1	Coil
GMD2020	PVC Corr Conduit Medium Duty	20.0mm x 20m	Grey	1	Coil
GMD2050	PVC Corr Conduit Medium Duty	20.0mm x 50m	Grey	1	Coil
GMD2510	PVC Corr Conduit Medium Duty	25.0mm x 10m	Grey	1	Coil
GMD2520	PVC Corr Conduit Medium Duty	25.0mm x 20m	Grey	1	Coil
GMD2550	PVC Corr Conduit Medium Duty	25.0mm x 50m	Grey	1	Coil
GMD3210	PVC Corr Conduit Medium Duty	32.0mm x 10m	Grey	1	Coil
GMD3225	PVC Corr Conduit Medium Duty	32.0mm x 25m	Grey	1	Coil
GMD4010	PVC Corr Conduit Medium Duty	40.0mm x 10m	Grey	1	Coil
GMD4025	PVC Corr Conduit Medium Duty	40.0mm x 25m	Grey	1	Coil
GMD5010	PVC Corr Conduit Medium Duty	50.0mm x 10m	Grey	1	Coil
GMD5025	PVC Corr Conduit Medium Duty	50.0mm x 25m	Grey	1	Coil
OHD2010	PVC Corr Conduit Heavy Duty	20.0mm x 10m	Orange	1	Coil
OHD2020	PVC Corr Conduit Heavy Duty	20.0mm x 20m	Orange	1	Coil
OHD2510	PVC Corr Conduit Heavy Duty	25.0mm x 10m	Orange	1	Coil
OHD2520	PVC Corr Conduit Heavy Duty	25.0mm x 20m	Orange	1	Coil
OHD3210	PVC Corr Conduit Heavy Duty	32.0mm x 10m	Orange	1	Coil
OHD4010	PVC Corr Conduit Heavy Duty	40.0mm x 10m	Orange	1	Coil



PVC Solar Rigid Conduit (AS/NZS-2053.5-2001 Approved)

PART NUMBER	DESCRIPTION	SIZE	COLOUR	PACK QTY	PRICING UNIT
SCR25	Heavy Duty UV Protected PVC Rigid Solar Conduit	25.0mm x 4m	Grey	1	Length



Steel Galvanised Accessories

PART NUMBER	DESCRIPTION	SIZE	PACK QTY	PRICING UNIT
20SB	Conduit Fitting Sweeping Bend	20.0mm	1	Each
20E	Conduit Fitting Elbow	20.0mm	1	Each
20IE	Conduit Fitting Inspection Elbow	20.0mm	1	Each
20C	Conduit Fitting Coupling	20.0mm	1	Each
20T	Conduit Fitting Tee	20.0mm	1	Each
20IT	Conduit Fitting Inspection Tee	20.0mm	1	Each
20JB1	Junction Box 1 way	20.0mm	1	Each
20JB2	Junction Box 2 way	20.0mm	1	Each
20JB3	Junction Box 3 way	20.0mm	1	Each
20JB4	Junction Box 4 way	20.0mm	1	Each
25SB	Conduit Fitting Sweeping Bend	25.0mm	1	Each
25E	Conduit Fitting Elbow	25.0mm	1	Each
25IE	Conduit Fitting Inspection Elbow	25.0mm	1	Each
25C	Conduit Fitting Coupling	25.0mm	1	Each
25T	Conduit Fitting Tee	25.0mm	1	Each
25IT	Conduit Fitting Inspection Tee	25.0mm	1	Each
25JB1	Junction Box 1 way	25.0mm	1	Each
25JB2	Junction Box 2 way	25.0mm	1	Each
25JB3	Junction Box 3 way	25.0mm	1	Each
25JB4	Junction Box 4 way	25.0mm	1	Each
32SB	Conduit Fitting Sweeping Bend	32.0mm	1	Each
32E	Conduit Fitting Elbow	32.0mm	1	Each
32IE	Conduit Fitting Inspection Elbow	32.0mm	1	Each
32C	Conduit Fitting Coupling	32.0mm	1	Each
32T	Conduit Fitting Tee	32.0mm	1	Each
32IT	Conduit Fitting Inspection Tee	32.0mm	1	Each
32JB1	Junction Box 1 way	32.0mm	1	Each
32JB2	Junction Box 2 way	32.0mm	1	Each
32JB3	Junction Box 3 way	32.0mm	1	Each
32JB4	Junction Box 4 way	32.0mm	1	Each
40SB	Conduit Fitting Sweeping Bend	40.0mm	1	Each
40E	Conduit Fitting Elbow	40.0mm	1	Each
40IE	Conduit Fitting Inspection Elbow	40.0mm	1	Each
40C	Conduit Fitting Coupling	40.0mm	1	Each
40T	Conduit Fitting Tee	40.0mm	1	Each
40IT	Conduit Fitting Inspection Tee	40.0mm	1	Each
40JB1	Junction Box 1 way	40.0mm	1	Each
40JB2	Junction Box 2 way	40.0mm	1	Each
40JB3	Junction Box 3 way	40.0mm	1	Each
40JB4	Junction Box 4 way	40.0mm	1	Each



Steel Galvanised Accessories Cont.

PART NUMBER	DESCRIPTION	SIZE	PACK QTY	PRICING UNIT
50SB	Conduit Fitting Sweeping Bend	50.0mm	1	Each
50E	Conduit Fitting Elbow	50.0mm	1	Each
50IE	Conduit Fitting Inspection Elbow	50.0mm	1	Each
50C	Conduit Fitting Coupling	50.0mm	1	Each
50T	Conduit Fitting Tee	50.0mm	1	Each
50IT	Conduit Fitting Inspection Tee	50.0mm	1	Each
50JB1	Junction Box 1 way	50.0mm	1	Each
50JB2	Junction Box 2 way	50.0mm	1	Each
50JB3	Junction Box 3 way	50.0mm	1	Each
50JB4	Junction Box 4 way	50.0mm	1	Each
20	Galvanised Flange Dome	20.0mm	1	Each
25	Galvanised Flange Dome	25.0mm	1	Each
32	Galvanised Flange Dome	32.0mm	1	Each
2016	Galvanised Steel Reducer	20 x 16	1	Each
2520	Galvanised Steel Reducer	25 x 20	1	Each
3225	Galvanised Steel Reducer	32 x 25	1	Each
4032	Galvanised Steel Reducer	40 x 32	1	Each
5040	Galvanised Steel Reducer	50 x 40	1	Each
6350	Galvanised Steel Reducer	63 x 50	1	Each



PVC Rigid Solar Accessories

PART NUMBER	DESCRIPTION	SIZE	COLOUR	PACK QTY	PRICING UNIT
SOLAMR	Male Conduit Reducer	25.0mm	Grey	1	Each
SOLAMF	Male & Female Conduit Bush	25.0mm	Grey	1	Each
SOLAC	Solid Coupler	25.0mm	Grey	1	Each
SOLAM	Plain to Screwed Adaptor Male	25.0mm	Grey	1	Each
SOLA1F	Plain to Screwed Adaptor Female	25.0mm	Grey	1	Each
SOLAFA	Flex Adaptor	25.0mm	Grey	1	Each
SOLJBOX1	Round Small Junction Box 1 Way	25.0mm	Grey	1	Each
SOLJBOX2	Round Small Junction Box 2 Way	25.0mm	Grey	1	Each
SOLJBOX2A	Small Junction Box 2 Way 90 Degree Angled	25.0mm	Grey	1	Each
SOLJBOX3	Round Small Junction Box 3 Way	25.0mm	Grey	1	Each
SOLJBOX4	Round Small Junction Box 4 Way	25.0mm	Grey	1	Each
SOLT	Solid Tee	25.0mm	Grey	1	Each
SOLIT	Inspection Tee	25.0mm	Grey	1	Each
SOLE	Elbow	25.0mm	Grey	1	Each
SOLIE	Inspection Elbow	25.0mm	Grey	1	Each
SOLSB	Sweep Bend	25.0mm	Grey	1	Each
SOLSBH	Heavy Duty Sweep Bend	25.0mm	Grey	1	Each
SOLFS25P	PVC Full Saddle	25.0mm	Grey	50	Tub

SOLAMR



SOLAMF



SOLAC



SOLAM



SOLA1F



SOLAFA



SOLFS25P





**Did you know that you can order online
at tuffstufftradesolutions.com.au?
Speak to your sales rep to find out more.**



BLACK HFT LSZH CONDUITS & FITTINGS (LOW SMOKE/ HALOGEN FREE)

Black HFT LSZH Rigid Conduit MD
Black HFT LSZH Corrugated Conduit MD
Black HFT LSZH Waterproof Adaptable Box
Black HFT LSZH Single Switch Box 77
Black HFT LSZH 1299 Double Switch Box
Black HFT LSZH CK Double Switch Box
Black HFT LSZH Cement
Black HFT LSZH Shallow Junction Box
Black HFT LSZH Deep Junction Box
Black HFT LSZH Bends
Black HFT LSZH Solid Elbow
Black HFT LSZH Couplers
Black HFT LSZH Male Adapters
Black HFT LSZH Conduit Clips

Products made from top quality raw material that will not release any toxic or corrosive gases or emit a dense wave of smoke in case of fire.



Standards

IEC61386-1, IEC61386-21, IEC60754-2, IEC61034-2, ASTM E662, ISO4589-2, ISO19700, UI94

Low smoke, halogen free conduit features



In case of a fire accident, they do not release toxic and corrosive gases during combustion, protecting people and the environment.



In case of a fire accident, they ensure better visibility of escape routes due to their low smoke emission.



They provide higher protection of building facilities and mechanical equipment due to the absence of corrosive gases during their combustion.



They ensure high impact resistance in extreme low temperature conditions (at least -45°C).



They contain flame retardants that reduce flames propagating.



They achieve a low environment footprint as they fully satisfy RoHS, IEC, CE, ISO and REACH European regulations concerning the use of hazardous and chemical substances respectively.

Black HFT LSZH Rigid Conduit MD

PART NUMBER	TYPE (MM)	MIN OUTSIDE DIAMETER	MAX OUTSIDE DIAMETER	WALL T (MM)
HFMDR20	20.0mm	19.7	20.0	1.8mm - 2.1mm
HFMDR25	25.0mm	24.7	25.0	1.8mm - 2.1mm
HFMDR32	32.0mm	31.7	32.0	2.1mm - 2.4mm
HFMDR40	40.0mm	39.7	40.0	2.4mm - 2.7mm
HFMDR50	50.0mm	49.7	50.0	2.8mm - 3.1mm
HFMDR63	63.0mm	62.7	63.0	3.0mm - 3.5mm
HFMDR75	75.0mm	75.2	75.5	3.0mm - 3.5mm
HFMDR80	80.0mm	88.7	89.1	3.5mm - 4.1mm
HFMDR100	100.0mm	114.1	114.5	4.5mm - 5.2mm



Black HFT LSZH Corrugated Conduit MD

PART NUMBER	TYPE (MM)	OUTSIDE DIAMETER	MIN INTERNAL DIAMETER	PACK QTY	PRICING UNIT
HFMDC20	20.0mm	20±0.3	14.1	50	Coil
HFMDC25	25.0mm	25±0.4	18.3	50	Coil
HFMDC32	32.0mm	32±0.4	24.3	25	Coil
HFMDC40	40.0mm	40±0.4	31.2	10	Coil
HFMDC50	50.0mm	50±0.5	39.6	10	Coil



Black HFT LSZH Waterproof Adaptable Box

PART NUMBER	SPECS	LENGTH (MM)	WIDTH (MM)	HEIGHT (MM)	PACK QTY	PRICING UNIT
HFPJB85	85*85*62	85.0mm	85.0mm	62.0mm	96	Each
HFPJB108	108*108*50	108.0mm	108.0mm	50.0mm	63	Each
HFPJB108	108*108*76	108.0mm	108.0mm	76.0mm	45	Each
HFPJB163	163*108*81	163.0mm	108.0mm	81.0mm	42	Each
HFPJB211	211*108*81	211.0mm	108.0mm	81.0mm	18	Each
HFPJB200	200*300*152	200.0mm	300.0mm	152.0mm	4	Each
HFPJB300	200*300*200	200.0mm	300.0mm	200.0mm	4	Each



Black HFT LSZH Single Switch Box 77

PART NUMBER	SPECS	LENGTH (MM)	WIDTH (MM)	HEIGHT (MM)	PACK QTY	PRICING UNIT
HFS1299-77	77*77*43	77.0mm	77.0mm	43.0mm	200	Each



Black HFT LSZH 1299 Double Switch Box

PART NUMBER	SPECS	LENGTH (MM)	WIDTH (MM)	HEIGHT (MM)	PACK QTY	PRICING UNIT
HFD1299	86*143*42	86.0mm	143.0mm	42.0mm	120	Each



Black HFT LSZH CK Double Switch Box

PART NUMBER	SPECS	LENGTH (MM)	WIDTH (MM)	HEIGHT (MM)	PACK QTY	PRICING UNIT
HFCKD	86*146*42	86.0mm	146.0mm	42.0mm	120	Each



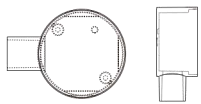
Black HFT Cement

PART NUMBER	DESCRIPTION	SIZE	PACK QTY	PRICING UNIT
HFCEM	Halogen Free Low Smoke Conduit Cement	N/A	250ml	Jar

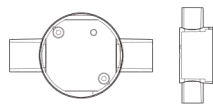


Black HFT LSZH Shallow Junction Box

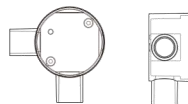
PART NUMBER	TYPE (MM)	WIDTH (MM)	HEIGHT (MM)	PACK QTY	PRICING UNIT
SJB20-1	20.0mm	64.0mm	43.0mm	140	Each
SJB20-2	20.0mm	64.0mm	43.0mm	140	Each
SJB20-V	20.0mm	64.0mm	43.0mm	112	Each
SJB20-3	20.0mm	64.0mm	43.0mm	112	Each
SJB20-4	20.0mm	64.0mm	43.0mm	140	Each
SJB25-1	25.0mm	64.0mm	43.0mm	140	Each
SJB25-2	25.0mm	64.0mm	43.0mm	84	Each
SJB25-3	25.0mm	64.0mm	43.0mm	84	Each
SJB25-V	25.0mm	64.0mm	43.0mm	84	Each
SJB25-4	25.0mm	64.0mm	43.0mm	84	Each



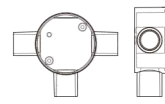
SJB20/25-1



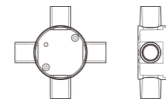
SJB20/25-2



SJB20/25-3



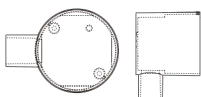
SJB20/25-V



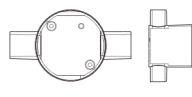
SJB20/25-4

Black HFT LSZH Deep Junction Box

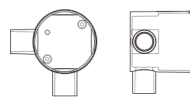
PART NUMBER	TYPE (MM)	WIDTH (MM)	HEIGHT (MM)	PACK QTY	PRICING UNIT
DJB20-1	20.0mm	64.0mm	71.0mm	120	Each
DJB20-2	20.0mm	64.0mm	71.0mm	120	Each
DJB20-V	20.0mm	64.0mm	71.0mm	100	Each
DJB20-3	20.0mm	64.0mm	71.0mm	100	Each
DJB20-4	20.0mm	64.0mm	71.0mm	100	Each
DJB25-1	25.0mm	64.0mm	71.0mm	100	Each
DJB25-2	25.0mm	64.0mm	71.0mm	80	Each
DJB25-3	25.0mm	64.0mm	71.0mm	80	Each
DJB25-V	25.0mm	64.0mm	71.0mm	80	Each
DJB25-4	25.0mm	64.0mm	71.0mm	48	Each



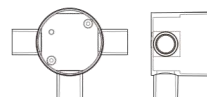
DJB20/25-1



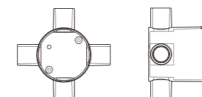
DJB20/25-2



DJB20/25-V



DJB20/25-3



DJB20/25-4

Black HFT LSZH Bends

PART NUMBER	TYPE (MM)	OUTSIDE DIAMETER	INTERNAL DIAMETER	PACK QTY	PRICING UNIT
HFMDB20	20.0mm	25.2	20.2	180	Each
HFMDB25	25.0mm	30.0	25.2	135	Each
HFMDB32	32.0mm	36.5	32.0	80	Each
HFMDB40	40.0mm	46.4	40.2	35	Each
HFMDB50	50.0mm	57.2	50.2	28	Each



Black HFT LSZH Solid Elbow

PART NUMBER	TYPE (MM)	OUTSIDE DIAMETER	INTERNAL DIAMETER	PACK QTY	PRICING UNIT
HFCE20	20.0mm	23.5	20.2	700	Each
HFCE25	25.0mm	28.5	25.2	400	Each
HFCE32	37.2mm	37.2	32.2	170	Each



Black HFT LSZH Couplers

PART NUMBER	TYPE (MM)	OUTSIDE DIAMETER	INTERNAL DIAMETER	PACK QTY	PRICING UNIT
HF20C	20.0mm	23.5	20	1000	Each
HF25C	25.0mm	28.5	25	600	Each
HF32C	32.0mm	37	32	300	Each
HF40C	40.0mm	44.5	40	224	Each
HF50C	50.0mm	55.6	50	126	Each



Black HFT LSZH Male Adapter

PART NUMBER	TYPE (MM)	OUTSIDE DIAMETER	INTERNAL DIAMETER	PACK QTY	PRICING UNIT
HFA20	20.0mm	25.2	20.2	1000	Each
HFA25	25.0mm	32.2	25.2	720	Each
HFA32	32.0mm	39.2	32.2	360	Each
HFA40	40.0mm	47.2	40.2	210	Each
HFA50	50.0mm	57.2	50.2	120	Each



Black HFT LSZH Clips

PART NUMBER	TYPE (MM)	OUTSIDE DIAMETER	INTERNAL DIAMETER	PACK QTY	PRICING UNIT
HFC20	20.0mm	25.2	20.2	1000	Each
HFC25	25.0mm	32.2	25.2	720	Each
HFC32	32.0mm	39.2	32.2	360	Each
HFC40	40.0mm	47.2	40.2	210	Each
HFC50	50.0mm	57.2	50.2	120	Each



GREEN STAR CONDUITS



Grey Electrical Conduit Rigid MD
Orange Electrical Conduit Rigid HD
White Communications Conduit Rigid MD
White Communications Corrugated Conduit MD
Grey Electrical Corrugated Conduit MD
Orange Electrical Corrugated Conduit HD
Grey Solar Corrugated Conduit HD
Accessories Selection Chart

INDENT ONLY



Grey Electrical Conduit Rigid MD (Indent Only)

PART NUMBER	DESCRIPTION	SIZE	COLOUR	PRICING UNIT
GR20MD	Medium Duty PVC Ridged Conduit	20.0mm x 4m	Grey	Length
GR25MD	Medium Duty PVC Ridged Conduit	25.0mm x 4m	Grey	Length
GR32MD	Medium Duty PVC Ridged Conduit	32.0mm x 4m	Grey	Length
GR40MD	Medium Duty PVC Ridged Conduit	40.0mm x 4m	Grey	Length
GR50MD	Medium Duty PVC Ridged Conduit	50.0mm x 4m	Grey	Length



Orange Electrical Conduit Rigid HD (Indent Only)

PART NUMBER	DESCRIPTION	SIZE	COLOUR	PRICING UNIT
GR20HD	Heavy Duty PVC Ridged Conduit	20.0mm x 4m	Orange	Length
GR25HD	Heavy Duty PVC Ridged Conduit	25.0mm x 4m	Orange	Length
GR32HD	Heavy Duty PVC Ridged Conduit	32.0mm x 4m	Orange	Length
GR40HD	Heavy Duty PVC Ridged Conduit	40.0mm x 4m	Orange	Length
GR50HD	Heavy Duty PVC Ridged Conduit	50.0mm x 4m	Orange	Length



White Communications Conduit Rigid MD (Indent Only)

PART NUMBER	DESCRIPTION	SIZE	COLOUR	PRICING UNIT
GR20CO	Communication Medium Duty PVC Ridged Conduit	20.0mm x 4m	White	Length
GR25CO	Communication Medium Duty PVC Ridged Conduit	25.0mm x 4m	White	Length
GR32CO	Communication Medium Duty PVC Ridged Conduit	32.0mm x 4m	White	Length
GR40CO	Communication Medium Duty PVC Ridged Conduit	40.0mm x 4m	White	Length
GR50CO	Communication Medium Duty PVC Ridged Conduit	50.0mm x 4m	White	Length



White Communications Corrugated Conduit MD (Indent Only)

PART NUMBER	DESCRIPTION	SIZE	COLOUR	PRICING UNIT
GC2025CO	Communication Medium Duty PVC Corrugated Conduit	20.0mm x 25m	White	Coil
GC2050CO	Communication Medium Duty PVC Corrugated Conduit	20.0mm x 50m	White	Coil
GC2525CO	Communication Medium Duty PVC Corrugated Conduit	25.0mm x 25m	White	Coil
GC2550CO	Communication Medium Duty PVC Corrugated Conduit	25.0mm x 50m	White	Coil



Grey Electrical Corrugated Conduit MD (Indent Only)

PART NUMBER	DESCRIPTION	SIZE	COLOUR	PRICING UNIT
GC1650MD	Medium Duty PVC Corrugated Conduit	16.0mm x 50m	Grey	Coil
GC2010MD	Medium Duty PVC Corrugated Conduit	20.0mm x 10m	Grey	Coil
GC2020MD	Medium Duty PVC Corrugated Conduit	20.0mm x 20m	Grey	Coil
GC2050MD	Medium Duty PVC Corrugated Conduit	20.0mm x 50m	Grey	Coil
GC2510MD	Medium Duty PVC Corrugated Conduit	25.0mm x 10m	Grey	Coil
GC2520MD	Medium Duty PVC Corrugated Conduit	25.0mm x 20m	Grey	Coil
GC2550MD	Medium Duty PVC Corrugated Conduit	25.0mm x 50m	Grey	Coil
GC3210MD	Medium Duty PVC Corrugated Conduit	32.0mm x 10m	Grey	Coil
GC3225MD	Medium Duty PVC Corrugated Conduit	32.0mm x 25m	Grey	Coil
GC4010MD	Medium Duty PVC Corrugated Conduit	40.0mm x 10m	Grey	Coil
GC4025MD	Medium Duty PVC Corrugated Conduit	40.0mm x 25m	Grey	Coil
GC5010MD	Medium Duty PVC Corrugated Conduit	50.0mm x 10m	Grey	Coil
GC5025MD	Medium Duty PVC Corrugated Conduit	50.0mm x 25m	Grey	Coil



Orange Electrical Corrugated Conduit HD (Indent Only)

PART NUMBER	DESCRIPTION	SIZE	COLOUR	PRICING UNIT
GC1650HD	Heavy Duty PVC Corrugated Conduit	16.0mm x 50m	Orange	Coil
GC2010HD	Heavy Duty PVC Corrugated Conduit	20.0mm x 10m	Orange	Coil
GC2020HD	Heavy Duty PVC Corrugated Conduit	20.0mm x 20m	Orange	Coil
GC2050HD	Heavy Duty PVC Corrugated Conduit	20.0mm x 50m	Orange	Coil
GC2510HD	Heavy Duty PVC Corrugated Conduit	25.0mm x 10m	Orange	Coil
GC2520HD	Heavy Duty PVC Corrugated Conduit	25.0mm x 20m	Orange	Coil
GC2550HD	Heavy Duty PVC Corrugated Conduit	25.0mm x 50m	Orange	Coil
GC3210HD	Heavy Duty PVC Corrugated Conduit	32.0mm x 10m	Orange	Coil
GC3225HD	Heavy Duty PVC Corrugated Conduit	32.0mm x 25m	Orange	Coil
GC4010HD	Heavy Duty PVC Corrugated Conduit	40.0mm x 10m	Orange	Coil
GC4025HD	Heavy Duty PVC Corrugated Conduit	40.0mm x 25m	Orange	Coil
GC5010HD	Heavy Duty PVC Corrugated Conduit	50.0mm x 10m	Orange	Coil
GC5025HD	Heavy Duty PVC Corrugated Conduit	50.0mm x 25m	Orange	Coil



Grey Solar Corrugated Conduit HD (Indent Only)

PART NUMBER	DESCRIPTION	SIZE	COLOUR	PRICING UNIT
GC2550SO	Solar Heavy Duty PVC Corrugated Conduit	25.0mm x 50m	Grey	Coil



Accessories Selection Chart (Indent Only)

Rigid Conduit MD Grey



CONDUIT SIZE	CONDUIT COUPLER	CONDUIT ELBOW	STANDARD BENDS	90° SWEEP BEND	CONDUIT END CAP	STEP REDUCER	INTERNAL REDUCER	STRAIGHT TEES	CORRUGATED TO PLAIN ADAPTERS	PLAIN TO SCREW ADAPTERS
20.0mm	G20MDC	G20MDE	G20MDSB	G20MDSW	G20MDEC	G20/16SR & G25/20SR	G20/16IR & G25/20IR	G20MDT	G20MPAD	G20MDSAD
25.0mm	G25MDC	G25MDE	G25MDSB	G25MDSW	G25MDEC	G25/20SR & G32/25SR	G25/25IR & G32/25IR		G25MPAD	G25MDSAD
32.0mm	G32MDC		G32MDSB		G32MDEC	G32/25SR	G32/25IR & G40/32IR			G32MDSAD
40.0mm	G40MDC		G40MDSB		G40MDEC		G40/32IR & G50/40IR			G40MDSAD
50.0mm	G50MDC		G50MDSB		G50MDEC		G50/40IR			G50MDSAD

Rigid Conduit HD Orange



CONDUIT SIZE	CONDUIT COUPLER	CONDUIT ELBOW	STANDARD BENDS	90° SWEEP BEND	CONDUIT END CAP
20.0mm	G20HDC	G20HDE	G20HDSB	G20HDSW	G20MDEC
25.0mm	G25HDC	G25HDE	G25HDSB	G25HDSW	G25MDEC
32.0mm	G32HDC		G32HDSB	G32HDSW	G32HDEC
40.0mm	G40HDC			G40HDSW	G40HDEC
50.0mm	G50HDC			G50HDSW	G50HDEC

Communications Conduit MD White



CONDUIT SIZE	CONDUIT COUPLER	STANDARD BENDS	90° SWEEP BEND
20.0mm	G20COC	G20COSB	G20COSW
25.0mm	G25COC	G25COSB	G25COSW
32.0mm	G32COC	G32COSB	G32COSW
40.0mm	G40COC		G40COSW
50.0mm	G50COC		G50COSW

Electrical Conduit MD Grey



CONDUIT SIZE	CORRUGATED CONDUIT GLANDS	STRAIGHT GLANDS	CORRUGATED TO PLAIN ADAPTERS	CORRUGATED TO SCREW ADAPTERS	90° CORRUGATED TO SCREW ADAPTERS	DOUBLE CORRUGATED CLIP ADAPTERS
16.0mm	G16CG					
20.0mm	G20CG	G20CSG	G20CPA	G20CSA	G20C90	G20CCA
25.0mm	G25CG	G25CSG	G25CPA	G25CSA	G25C90	G25CCA
32.0mm	G32CG	G32CSG		G32CSA		
40.0mm				G40CSA		



CABLE TIES / GLANDS

Premium Nylon Cable Ties
Premium Nylon Cable Ties (1000 Packs)
Metal Tongue Cable Ties
Metal Detectable Cable Ties
Solar Cable Ties
316 Grade Stainless Steel Cable Ties
Fully Coated 316 Grade Stainless Steel Cable Ties
Cable Tie Guns
Hook & Loop Ties / Rolls
Adhesive Cable Tie Mounts
Masonry Cable Tie Mounts
Premium Nylon IP68 Cable Glands
Premium Multi Hole Solar IP68 Cable Glands
Solar Multi Hole Inserts for Nylon Glands
Solar Plugs
Solar Cable Gland to Conduit Couplings
Solar Corrugated Conduit Connectors
Metal IP68 Cable Glands
EMC IP68 Cable Glands
PEX Brass Glands
- Type A2 PVC Compression
- Type CW Steel Wire Armour
Shrouds
- PEX-A2 Glands
- PEX-CW Glands
Earth Tags
Snap Bushings
Metal Lock Nuts
Nylon Lock Nuts

Premium Nylon Cable Ties

TuffStuff Premium Nylon Cable Ties are manufactured using Virgin Nylon 66
 Halogen Free
 UL approved
 Operating temp: -40°C to +80°C
 94V2 Flammability
 Strong resistance to chemical attack

PART NUMBER	DESCRIPTION	SIZE	PACK QTY	PRICING UNIT
CT100	Cable Tie Nylon Natural	100mm x 2.5mm	100	Pack
CT150	Cable Tie Nylon Natural	150mm x 3.6mm	100	Pack
CT200/3	Cable Tie Nylon Natural	200mm x 3.6mm	100	Pack
CT200	Cable Tie Nylon Natural	200mm x 4.8mm	100	Pack
CT250	Cable Tie Nylon Natural	250mm x 4.8mm	100	Pack
CT280	Cable Tie Nylon Natural	280mm x 4.8mm	100	Pack
CT300	Cable Tie Nylon Natural	300mm x 4.8mm	100	Pack
CT370	Cable Tie Nylon Natural	370mm x 4.8mm	100	Pack
CT370HD	Cable Tie Nylon Natural	370mm x 7.9mm	100	Pack
CT432	Cable Tie Nylon Natural	432mm x 4.8mm	100	Pack
CT550	Cable Tie Nylon Natural	550mm x 8.0mm	100	Pack
CT550HD	Cable Tie Nylon Natural	550mm x 12.7mm	100	Pack
CT100B	Cable Tie Nylon Black	100mm x 2.5mm	100	Pack
CT150B	Cable Tie Nylon Black	150mm x 3.6mm	100	Pack
CT200/3B	Cable Tie Nylon Black	200mm x 3.6mm	100	Pack
CT200B	Cable Tie Nylon Black	200mm x 4.8mm	100	Pack
CT250B	Cable Tie Nylon Black	250mm x 4.8mm	100	Pack
CT280B	Cable Tie Nylon Black	280mm x 4.8mm	100	Pack
CT300B	Cable Tie Nylon Black	300mm x 4.8mm	100	Pack
CT370B	Cable Tie Nylon Black	370mm x 4.8mm	100	Pack
CT370HDB	Cable Tie Nylon Black	370mm x 7.9mm	100	Pack
CT432B	Cable Tie Nylon Black	432mm x 4.8mm	100	Pack
CT550B	Cable Tie Nylon Black	550mm x 8.0mm	100	Pack
CT550HDB	Cable Tie Nylon Black	550mm x 12.7mm	100	Pack



1000 Packs

PART NUMBER	DESCRIPTION	SIZE	PACK QTY	PRICING UNIT
CT100/1000	Cable Tie Nylon Natural	100mm x 2.5mm	1000	Pack
CT150/1000	Cable Tie Nylon Natural	150mm x 3.6mm	1000	Pack
CT200/1000	Cable Tie Nylon Natural	200mm x 4.8mm	1000	Pack
CT250/1000	Cable Tie Nylon Natural	250mm x 4.8mm	1000	Pack
CT300/1000	Cable Tie Nylon Natural	300mm x 4.8mm	1000	Pack
CT100B/1000	Cable Tie Nylon Black	100mm x 2.5mm	1000	Pack
CT150B/1000	Cable Tie Nylon Black	150mm x 3.6mm	1000	Pack
CT200B/1000	Cable Tie Nylon Black	200mm x 4.8mm	1000	Pack
CT250B/1000	Cable Tie Nylon Black	250mm x 4.8mm	1000	Pack
CT300B/1000	Cable Tie Nylon Black	300mm x 4.8mm	1000	Pack



Metal Tongue Cable Ties

PART NUMBER	DESCRIPTION	SIZE	PACK QTY	PRICING UNIT
MCT140	Metal Tongue Cable Tie Natural	140mm x 3.5mm	100	Pack
MCT190	Metal Tongue Cable Tie Natural	186mm x 4.5mm	100	Pack
MCT300	Metal Tongue Cable Tie Natural	290mm x 4.5mm	100	Pack
MCT360	Metal Tongue Cable Tie Natural	360mm x 4.5mm	100	Pack
MCT360HD	Metal Tongue Cable Tie Natural	360mm x 7.5mm	100	Pack
MCT140B	Metal Tongue Cable Tie Black	140mm x 3.5mm	100	Pack
MCT190B	Metal Tongue Cable Tie Black	186mm x 4.5mm	100	Pack
MCT300B	Metal Tongue Cable Tie Black	290mm x 4.5mm	100	Pack
MCT360B	Metal Tongue Cable Tie Black	360mm x 4.5mm	100	Pack
MCT360HDB	Metal Tongue Cable Tie Black	360mm x 7.5mm	100	Pack



Metal Detectable Cable Ties

PART NUMBER	DESCRIPTION	SIZE	PACK QTY	PRICING UNIT
MPDCT100	Metal Particle Detectable Cable Tie	100mm x 2.5mm	100	Pack
MPDCT190	Metal Particle Detectable Cable Tie	190mm x 4.5mm	100	Pack
MPDCT280	Metal Particle Detectable Cable Tie	280mm x 4.5mm	100	Pack



Solar Cable Ties

PART NUMBER	DESCRIPTION	SIZE	PACK QTY	PRICING UNIT
SOLCT300B	UV Black Nylon Cable	300mm x 4.8mm	100	Bag
SOLRCT360	316 Grade Stainless Steel Roller Ball Tie	360mm x 4.6mm	100	Bag
SOLRCT360C	316 Grade Coated Stainless Steel Roller Ball Tie	360mm x 4.6mm	100	Bag
SOLLCT335	316 Grade Stainless Steel Roller Ladder Tie	335mm x 7.0mm	50	Bag
SOLLCT335C	316 Grade Coated Stainless Steel Ladder Tie	335mm x 7.0mm	50	Bag



316 Grade Stainless Steel Cable Ties

TuffStuff Stainless Steel Cable Ties are manufactured from the highest quality 316 Grade Stainless Steel
 Operating temp: -40°C to +300°C
 316 Grade Stainless Steel is ideal for high corrosion and marine environments
 Additional sizes on request

PART NUMBER	DESCRIPTION	SIZE	PACK QTY	PRICING UNIT
SS100	316 Grade Stainless Steel Tie	100mm x 4.6mm	100	Pack
SS125	316 Grade Stainless Steel Tie	125mm x 4.6mm	100	Pack
SS150	316 Grade Stainless Steel Tie	150mm x 4.6mm	100	Pack
SS200	316 Grade Stainless Steel Tie	200mm x 4.6mm	100	Pack
SS250	316 Grade Stainless Steel Tie	250mm x 4.6mm	100	Pack
SS300	316 Grade Stainless Steel Tie	300mm x 4.6mm	100	Pack
SS360	316 Grade Stainless Steel Tie	360mm x 4.6mm	100	Pack
SS520	316 Grade Stainless Steel Tie	520mm x 4.6mm	100	Pack
SS200HD	316 Grade Stainless Steel Tie	200mm x 7.9mm	50	Pack
SS300HD	316 Grade Stainless Steel Tie	300mm x 7.9mm	50	Pack
SS360HD	316 Grade Stainless Steel Tie	360mm x 7.9mm	50	Pack
SS520HD	316 Grade Stainless Steel Tie	520mm x 7.9mm	50	Pack



Fully Coated 316 Grade Stainless Steel Cable Ties

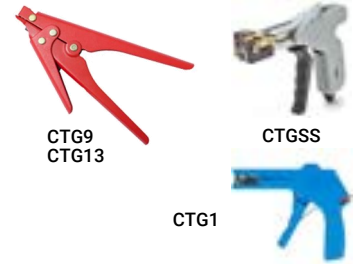
TuffStuff Fully Coated Stainless Steel Cable Ties are manufactured from the highest quality 316 Grade Stainless Steel
 Unlike other coated stainless steel cable ties, our coated ties are **100% totally encapsulated** to prevent any possibility of corrosion
 Additional sizes on request

PART NUMBER	DESCRIPTION	SIZE	PACK QTY	PRICING UNIT
SS150C	316 Grade Stainless Steel Tie Coated	150mm x 4.6mm	100	Pack
SS200C	316 Grade Stainless Steel Tie Coated	200mm x 4.6mm	100	Pack
SS300C	316 Grade Stainless Steel Tie Coated	300mm x 4.6mm	100	Pack
SS360C	316 Grade Stainless Steel Tie Coated	360mm x 4.6mm	100	Pack
SS520C	316 Grade Stainless Steel Tie Coated	520mm x 4.6mm	100	Pack
SS200HDC	316 Grade Stainless Steel Tie Coated	200mm x 7.9mm	50	Pack
SS300HDC	316 Grade Stainless Steel Tie Coated	300mm x 7.9mm	50	Pack
SS360HDC	316 Grade Stainless Steel Tie Coated	360mm x 7.9mm	50	Pack
SS520HDC	316 Grade Stainless Steel Tie Coated	520mm x 7.9mm	50	Pack



Cable Tie Guns

PART NUMBER	DESCRIPTION	SIZE	PACK QTY	PRICING UNIT
CTG1	Cable Tie Gun Nylon Ties	4.8mm	1	Each
CTG9	Cable Tie Gun Nylon Ties	9.0mm	1	Each
CTG13	Cable Tie Gun Nylon Ties	13.0mm	1	Each
CTGSS	Cable Tie Gun Stainless Steel Ties	7.9mm	1	Each



Hook & Loop Cable Ties / Rolls

TuffStuff Hook & Loop is soft and flexible for total protection of all delicate cables and patch cords
 Additional sizes and colours on request
 Super grip

PART NUMBER	DESCRIPTION	SIZE	PACK QTY	PRICING UNIT
VT150	Hook & Loop Cable Tie Black	150mm x 12.0mm	10	Pack
VT200-16	Hook & Loop Cable Tie Black	200mm x 16.0mm	10	Pack
VT200	Hook & Loop Cable Tie Black	200mm x 19.0mm	10	Pack
VT300-16	Hook & Loop Cable Tie Black	300mm x 16.0mm	10	Pack
VT300	Hook & Loop Cable Tie Black	300mm x 25.0mm	10	Pack
VR12	Hook & Loop Roll Black	12.0mm	25m	Roll
VR19	Hook & Loop Roll Black	19.0mm	25m	Roll
VR25	Hook & Loop Roll Black	25.0mm	25m	Roll



Adhesive Cable Tie Mounts

TuffStuff Adhesive Cable Tie Mounts have a low four way profile
 3M backing tape for extra hold

PART NUMBER	DESCRIPTION	SIZE	PACK QTY	PRICING UNIT
ATM12	Adhesive Tie Mount Natural	12.0mm x 12.0mm	100	Pack
ATM19	Adhesive Tie Mount Natural	19.0mm x 19.0mm	100	Pack
ATM28	Adhesive Tie Mount Natural	28.0mm x 28.0mm	100	Pack
ATM12B	Adhesive Tie Mount Black	12.0mm x 12.0mm	100	Pack
ATM19B	Adhesive Tie Mount Black	19.0mm x 19.0mm	100	Pack
ATM28B	Adhesive Tie Mount Black	28.0mm x 28.0mm	100	Pack



Masonry Cable Tie Mounts

TuffStuff Christmas Tree Plugs provide the holding muscle you need in any material

PART NUMBER	DESCRIPTION	SIZE	PACK QTY	PRICING UNIT
XTP6	Christmas Tree Plug Black	6.0mm	100	Pack



Premium Nylon IP68 Cable Glands (AS1939, UL, CE & ROHS approved)

TuffStuff Nylon IP68 Cable Glands offer perfect protection for cable termination
 Manufactured from virgin nylon 66 with neoprene seal
 Wide cable acceptance
 Supplied with locknut

PART NUMBER	DESCRIPTION	THREAD SIZE	MIN SIZE MAX SIZE	PACK QTY	PRICING UNIT
NG12	Multi Sized IP68 Nylon Gland	12.0mm	3.0mm - 6.5mm	40	Each
NG16	Multi Sized IP68 Nylon Gland	16.0mm	6.0mm - 10.0mm	40	Each
NG20	Multi Sized IP68 Nylon Gland	20.0mm	8.0mm - 13.0mm	25	Each
NG25	Multi Sized IP68 Nylon Gland	25.0mm	12.5mm - 18.0mm	15	Each
NG32	Multi Sized IP68 Nylon Gland	32.0mm	15.0mm - 22.0mm	5	Each
NG40	Multi Sized IP68 Nylon Gland	40.0mm	18.0mm - 25.0mm	5	Each
NG40L	Multi Sized IP68 Nylon Gland	40.0mm	24.0mm - 32.0mm	1	Each
NG50	Multi Sized IP68 Nylon Gland	50.0mm	25.0mm - 36.0mm	2	Each
NG50L	Multi Sized IP68 Nylon Gland	50.0mm	31.0mm - 41.0mm	1	Each
NG63	Multi Sized IP68 Nylon Gland	63.0mm	35.0mm - 45.0mm	2	Each
NG63L	Multi Sized IP68 Nylon Gland	63.0mm	42.0mm - 50.0mm	1	Each
NG75	Multi Sized IP68 Nylon Gland	75.0mm	50.0mm - 56.0mm	1	Each
NG75L	Multi Sized IP68 Nylon Gland	75.0mm	56.0mm - 66.0mm	1	Each
NG90	Multi Sized IP68 Nylon Gland	90.0mm	66.0mm - 77.0mm	1	Each



Premium Multi Hole Solar IP68 Cable Glands

TuffStuff Premium Multi Hole Solar IP68 Cable Glands offer perfect protection for cable termination
 Manufactured from virgin nylon 66 with neoprene seal
 Wide cable acceptance
 Supplied with locknut

PART NUMBER	DESCRIPTION	THREAD SIZE	MIN SIZE MAX SIZE	PACK QTY	PRICING UNIT
SOL25S-2	Solar Gland Multi Hole 2 way	25.0mm	3.0mm - 5.5mm	15	Each
SOL25L-2	Solar Gland Multi Hole 2 way	25.0mm	4.0mm - 6.5mm	15	Each
SOL25S-3	Solar Gland Multi Hole 3 way	25.0mm	2.0mm - 5.0mm	15	Each
SOL25L-3	Solar Gland Multi Hole 3 way	25.0mm	5.0mm - 8.0mm	15	Each
SOL25S-4	Solar Gland Multi Hole 4 way	25.0mm	3.0mm - 5.5mm	15	Each
SOL25L-4	Solar Gland Multi Hole 4 way	25.0mm	5.0mm - 7.0mm	15	Each
SOL25L-5	Solar Gland Multi Hole 5 way	25.0mm	4.0mm - 6.0mm	15	Each



Solar Multi Hole Inserts for Nylon Glands

PART NUMBER	Description/Holes	THREAD SIZE	CABLE RANGE	PACK QTY	PRICING UNIT
SOLIN-2A	Solar Insert 2 holes	25.0mm	2.5mm - 3.5mm	1	Each
SOLIN-2F	Solar Insert 2 holes	25.0mm	6.4mm - 8.7mm	1	Each
SOLIN-3A	Solar Insert 3 holes	25.0mm	2.6mm - 3.6mm	1	Each
SOLIN-3C	Solar Insert 3 holes	25.0mm	4.8mm - 6.2mm	1	Each
SOLIN-4B	Solar Insert 4 holes	25.0mm	2.0mm - 3.1mm	1	Each
SOLIN-4D	Solar Insert 4 holes	25.0mm	3.0mm - 4.1mm	1	Each
SOLIN-5C	Solar Insert 5 holes	25.0mm	2.6mm - 3.6mm	1	Each
SOLIN-5E	Solar Insert 5 holes	25.0mm	3.6mm - 4.6mm	1	Each



Solar Plugs

PART NUMBER	DESCRIPTION	SIZE	PACK QTY	PRICING UNIT
SP-5	Solar Hole Plug	5.0mm	1	Each
SP-6	Solar Hole Plug	6.5mm	1	Each
SP-7	Solar Hole Plug	7.0mm	1	Each
SP-8	Solar Hole Plug	8.0mm	1	Each



Solar Cable Gland to Conduit Couplings

PART NUMBER	DESCRIPTION	THREAD SIZE	MIN SIZE MAX SIZE	PACK QTY	PRICING UNIT
SOLCF25-25C	Solar Gland to Solar Corrugated Conduit Connector	25.0mm	1.3mm - 1.8mm	1	Each
SOL25S-2C	Solar Gland to Solar Corrugated Conduit Connector	25.0mm	3.5mm - 5.1mm	1	Each
SOL25L-2C	Solar Gland to Solar Corrugated Conduit Connector	25.0mm	5.1mm - 6.5mm	1	Each
SOL25S-3C	Solar Gland to Solar Corrugated Conduit Connector	25.0mm	3.6mm - 5.2mm	1	Each
SOL25L-3C	Solar Gland to Solar Corrugated Conduit Connector	25.0mm	6.2mm - 8.0mm	1	Each
SOL25S-4C	Solar Gland to Solar Corrugated Conduit Connector	25.0mm	3.8mm - 5.2mm	1	Each
SOL25L-4C	Solar Gland to Solar Corrugated Conduit Connector	25.0mm	5.6mm - 7.3mm	1	Each
SOL25L-5C	Solar Gland to Solar Corrugated Conduit Connector	25.0mm	4.6mm - 6.0mm	1	Each



Solar Corrugated Conduit Connectors

PART NUMBER	DESCRIPTION	SIZE	PACK QTY	PRICING UNIT
SOLFC20	20.0mm - 20.0mm Conduit Connector	20.0mm	1	Each
SOLFC25	25.0mm - 25.0mm Conduit Connector	25.0mm	1	Each
SOLFC32	32.0mm - 32.0mm Conduit Connector	32.0mm	1	Each



Metal IP68 Cable Glands (AS1939 approved)

TuffStuff Nickel Plated Brass IP68 Cable Glands offer perfect protection for cable termination
 Manufactured from nickel plated brass with neoprene seal
 Wide cable acceptance
 Supplied with locknut

PART NUMBER	DESCRIPTION	THREAD SIZE	MIN SIZE MAX SIZE	PACK QTY	PRICING UNIT
MG12	Multi Sized IP68 Metal Gland	12.0mm	3.0mm - 6.0mm	1	Each
MG12L	Multi Sized IP68 Metal Gland	12.0mm	4.5mm - 8.0mm	1	Each
MG16	Multi Sized IP68 Metal Gland	16.0mm	5.0mm - 10.0mm	1	Each
MG20	Multi Sized IP68 Metal Gland	20.0mm	8.0mm - 13.0mm	1	Each
MG20L	Multi Sized IP68 Metal Gland	20.0mm	8.0mm - 15.0mm	1	Each
MG25	Multi Sized IP68 Metal Gland	25.0mm	11.0mm - 17.0mm	1	Each
MG25L	Multi Sized IP68 Metal Gland	25.0mm	11.0mm - 20.0mm	1	Each
MG32	Multi Sized IP68 Metal Gland	32.0mm	18.0mm - 25.0mm	1	Each
MG40	Multi Sized IP68 Metal Gland	40.0mm	19.0mm - 28.0mm	1	Each
MG40L	Multi Sized IP68 Metal Gland	40.0mm	24.0mm - 31.0mm	1	Each
MG50	Multi Sized IP68 Metal Gland	50.0mm	26.0mm - 35.0mm	1	Each
MG50L	Multi Sized IP68 Metal Gland	50.0mm	28.0mm - 43.0mm	1	Each
MG63	Multi Sized IP68 Metal Gland	63.0mm	32.0mm - 42.0mm	1	Each
MG63L	Multi Sized IP68 Metal Gland	63.0mm	35.0mm - 45.0mm	1	Each
MG63XL	Multi Sized IP68 Metal Gland	63.0mm	38.0mm - 54.0mm	1	Each
MG75	Multi Sized IP68 Metal Gland	75.0mm	53.0mm - 60.0mm	1	Each
MG90	Multi Sized IP68 Metal Gland	90.0mm	63.0mm - 70.0mm	1	Each



EMC IP68 Cable Glands

PART NUMBER	DESCRIPTION	THREAD SIZE	MIN SIZE MAX SIZE	PACK QTY	PRICING UNIT
EMC12	EMC Multi Sized IP68 Brass Gland	12.0mm	4.0mm - 8.0mm	50	Each
EMC16	EMC Multi Sized IP68 Brass Gland	16.0mm	5.0mm - 10.0mm	50	Each
EMC20	EMC Multi Sized IP68 Brass Gland	20.0mm	9.0mm - 14.0mm	25	Each
EMC25	EMC Multi Sized IP68 Brass Gland	25.0mm	13.0mm - 18.0mm	15	Each
EMC32	EMC Multi Sized IP68 Brass Gland	32.0mm	18.0mm - 24.5mm	5	Each
EMC40	EMC Multi Sized IP68 Brass Gland	40.0mm	24.0mm - 30.0mm	3	Each
EMC50	EMC Multi Sized IP68 Brass Gland	50.0mm	31.0mm - 41.0mm	2	Each
EMC63	EMC Multi Sized IP68 Brass Gland	63.0mm	35.0mm - 45.0mm	2	Each



PEX Brass Glands

Type A2 PVC Compression

IP68 rated. BS approved
Outdoor or indoor use with all types of unarmoured cable
Produces seal on outer sheath of unarmoured cable

PART NUMBER	DESCRIPTION	THREAD SIZE	MIN SIZE MAX SIZE	PACK QTY	PRICING UNIT
PEX-A2-16mm-SS	IP68 A2 PVC Compression	16.0mm	3.2mm - 8.6mm	1	Each
PEX-A2-20mm-SS	IP68 A2 PVC Compression	20.0mm	3.2mm - 8.7mm	1	Each
PEX-A2-20mm-S	IP68 A2 PVC Compression	20.0mm	6.1mm - 11.7mm	1	Each
PEX-A2-20mm-L	IP68 A2 PVC Compression	20.0mm	6.5mm - 14.0mm	1	Each
PEX-A2-25mm-L	IP68 A2 PVC Compression	25.0mm	11.1mm - 20.0mm	1	Each
PEX-A2-32mm-L	IP68 A2 PVC Compression	32.0mm	17.0mm - 26.3mm	1	Each
PEX-A2-40mm-L	IP68 A2 PVC Compression	40.0mm	23.5mm - 32.2mm	1	Each
PEX-A2-50mm-S	IP68 A2 PVC Compression	50.0mm	31.0mm - 38.2mm	1	Each
PEX-A2-50mm-L	IP68 A2 PVC Compression	50.0mm	35.6mm - 44.0mm	1	Each
PEX-A2-63mm-S	IP68 A2 PVC Compression	63.0mm	41.5mm - 49.9mm	1	Each
PEX-A2-63mm-L	IP68 A2 PVC Compression	63.0mm	47.2mm - 55.9mm	1	Each
PEX-A2-75mm-S	IP68 A2 PVC Compression	75.0mm	54.0mm - 61.9mm	1	Each
PEX-A2-75mm-L	IP68 A2 PVC Compression	75.0mm	61.1mm - 67.9mm	1	Each
PEX-A2-90mm-L	IP68 A2 PVC Compression	90.0mm	66.6mm - 79.9mm	1	Each
PEX-A2-100mm-L	IP68 A2 PVC Compression	100.0mm	76.0mm - 91.0mm	1	Each
PEX-A2-115mm-L	IP68 A2 PVC Compression	115.0mm	86.0mm - 97.9mm	1	Each
PEX-A2-130mm-L	IP68 A2 PVC Compression	130.0mm	97.0mm - 114.9mm	1	Each



PEX Brass Glands

Type CW Steel Wire Armour

IP68 rated. BS approved
 Outdoor or indoor use with all types of unarmoured cable
 Produces seal on outer sheath of unarmoured cable

PART NUMBER	DESCRIPTION	THREAD SIZE	MIN SIZE MAX SIZE	PACK QTY	PRICING UNIT
PEX-CW16mm-SS	IP68 CW SWA	16.0mm	6.1mm - 11.8mm	1	Each
PEX-CW20mm-SS	IP68 CW SWA	20.0mm	6.1mm - 11.8mm	1	Each
PEX-CW-20mm-S	IP68 CW SWA	20.0mm	9.5mm - 15.9mm	1	Each
PEX-CW-20mm-L	IP68 CW SWA	20.0mm	12.5mm - 20.9mm	1	Each
PEX-CW-25mm-S	IP68 CW SWA	25.0mm	14.0mm - 22.0mm	1	Each
PEX-CW-25mm-L	IP68 CW SWA	25.0mm	18.2mm - 26.2mm	1	Each
PEX-CW-32mm-L	IP68 CW SWA	32.0mm	23.7mm - 33.9mm	1	Each
PEX-CW-40mm-L	IP68 CW SWA	40.0mm	27.9mm - 40.4mm	1	Each
PEX-CW-50mm-S	IP68 CW SWA	50.0mm	35.2mm - 46.7mm	1	Each
PEX-CW-50mm-L	IP68 CW SWA	50.0mm	40.4mm - 53.0mm	1	Each
PEX-CW-63mm-S	IP68 CW SWA	63.0mm	45.6mm - 59.4mm	1	Each
PEX-CW-63mm-L	IP68 CW SWA	63.0mm	54.6mm - 65.8mm	1	Each
PEX-CW-75mm-S	IP68 CW SWA	75.0mm	59.0mm - 72.0mm	1	Each
PEX-CW-75mm-L	IP68 CW SWA	75.0mm	66.7mm - 78.4mm	1	Each
PEX-CW-90mm-L	IP68 CW SWA	90.0mm	76.2mm - 90.3mm	1	Each
PEX-CW-100mm-L	IP68 CW SWA	100.0mm	86.1mm - 101.4mm	1	Each
PEX-CW-115mm-L	IP68 CW SWA	115.0mm	101.5mm - 110.2mm	1	Each
PEX-CW-130mm-L	IP68 CW SWA	130.0mm	110.2mm - 123.2mm	1	Each



PEX A2 Gland Shrouds

PART NUMBER	DESCRIPTION	DIA	MIN SIZE MAX SIZE	PACK QTY	PRICING UNIT
DB-2023	Shroud for PEX-A2 20mm-SS	23.0mm	20.0mm - 23.0mm	1	Each
DB-2025	Shroud for PEX-A2 20mm-L	25.0mm	20.0mm - 25.0mm	1	Each
DB-2533	Shroud for PEX-A2 25mm-L	33.0mm	25.0mm - 33.0mm	1	Each
DB-3240	Shroud for PEX-A2 32mm-L	40.0mm	40.0mm - 61.0mm	1	Each
DB-4046	Shroud for PEX-A2 40mm-L	46.0mm	32.0mm - 46.0mm	1	Each
DB-5055	Shroud for PEX-A2 50mm-S	55.0mm	40.0mm - 55.0mm	1	Each
DB-6100	Shroud for PEX-A2 50mm-L	61.0mm	61.0mm - 93.0mm	1	Each
DB-7100	Shroud for PEX-A2 63mm-S	71.0mm	71.0mm - 106.0mm	1	Each
DB-7300	Shroud for PEX-A2 63mm-L	73.0mm	73.0mm - 107.0mm	1	Each
DB-6382	Shroud for PEX-A2 75mm-S	82.0mm	63.0mm - 82.0mm	1	Each
DB-6385	Shroud for PEX-A2 75mm-L	85.0mm	63.0mm - 85.0mm	1	Each
DB-75106	Shroud for PEX-A2 90mm-L	106.0mm	75.0mm - 106.0mm	1	Each
DB-88118	Shroud for PEX-A2 100mm-L	118.0mm	88.0mm - 118.0mm	1	Each



PEX CW Gland Shrouds

PART NUMBER	DESCRIPTION	DIA	MIN SIZE MAX SIZE	PACK QTY	PRICING UNIT
DC-2025	Shroud for PEX-CW 20mm-S	25.0mm	20.0mm - 25.0mm	1	Each
DC-2030	Shroud for PEX-CW 20mm-L	30.0mm	20.0mm - 30.0mm	1	Each
DC-2538	Shroud for PEX-CW 25mm-L	38.0mm	25.0mm - 38.0mm	1	Each
DC-3248	Shroud for PEX-CW 32mm-L	48.0mm	32.0mm - 48.0mm	1	Each
DC-4055	Shroud for PEX-CW 40mm-L	55.0mm	40.0mm - 55.0mm	1	Each
DC-5068	Shroud for PEX-CW 50mm-L	68.0mm	50.0mm - 68.0mm	1	Each
DC-6379	Shroud for PEX-CW 63mm-S	79.0mm	63.0mm - 79.0mm	1	Each
DC-6382	Shroud for PEX-CW 63mm-L	82.0mm	63.0mm - 82.0mm	1	Each
DC-6388	Shroud for PEX-CW 75mm-S	88.0mm	63.0mm - 88.0mm	1	Each
DC-7595	Shroud for PEX-CW 75mm-L	95.0mm	75.0mm - 95.0mm	1	Each
DC-88113	Shroud for PEX-CW 90mm-L	113.0mm	88.0mm - 113.0mm	1	Each



Earth Tags

PART NUMBER	DESCRIPTION	TYPE	SIZE	PACK QTY	PRICING UNIT
ET16	Earth Tag	Brass	16.0mm	1	Each
ET20	Earth Tag	Brass	20.0mm	1	Each
ET25	Earth Tag	Brass	25.0mm	1	Each
ET32	Earth Tag	Brass	32.0mm	1	Each
ET40	Earth Tag	Brass	40.0mm	1	Each
ET50	Earth Tag	Brass	50.0mm	1	Each
ET63	Earth Tag	Brass	63.0mm	1	Each
ET75	Earth Tag	Brass	75.0mm	1	Each
ET90	Earth Tag	Brass	90.0mm	1	Each
ET100	Earth Tag	Brass	100.0mm	1	Each
ET115	Earth Tag	Brass	115.0mm	1	Each
ET130	Earth Tag	Brass	130.0mm	1	Each



Snap Bushings

PART NUMBER	DESCRIPTION	TYPE	SIZE	PACK QTY	PRICING UNIT
BUSH8	Snap Bushing	8.0mm	100	Bag	Each
BUSH10	Snap Bushing	10.0mm	100	Bag	Each
BUSH13	Snap Bushing	12.7mm	100	Bag	Each
BUSH16	Snap Bushing	16.0mm	100	Bag	Each
BUSH20	Snap Bushing	20.0mm	100	Bag	Each
BUSH22	Snap Bushing	22.0mm	100	Bag	Each
BUSH25	Snap Bushing	25.0mm	100	Bag	Each
BUSH32	Snap Bushing	32.0mm	100	Bag	Each
BUSH38	Snap Bushing	38.0mm	100	Bag	Each
BUSH45	Snap Bushing	45.0mm	100	Bag	Each
BUSH50	Snap Bushing	50.0mm	100	Bag	Each



Metal Lock Nuts

PART NUMBER	DESCRIPTION	TYPE	SIZE	PACK QTY	PRICING UNIT
MLN12	Metal Lock Nuts	Brass	12.0mm	1	Each
MLN16	Metal Lock Nuts	Brass	16.0mm	1	Each
MLN20	Metal Lock Nuts	Brass	20.0mm	1	Each
MLN25	Metal Lock Nuts	Brass	25.0mm	1	Each
MLN32	Metal Lock Nuts	Brass	32.0mm	1	Each
MLN40	Metal Lock Nuts	Brass	40.0mm	1	Each
MLN50	Metal Lock Nuts	Brass	50.0mm	1	Each
MLN63	Metal Lock Nuts	Brass	63.0mm	1	Each
MLN75	Metal Lock Nuts	Brass	75.0mm	1	Each
MLN90	Metal Lock Nuts	Brass	90.0mm	1	Each
MLN100	Metal Lock Nuts	Brass	100.0mm	1	Each
MLN115	Metal Lock Nuts	Brass	115.0mm	1	Each
MLN130	Metal Lock Nuts	Brass	130.0mm	1	Each



Nylon Lock Nuts

PART NUMBER	DESCRIPTION	TYPE	SIZE	PACK QTY	PRICING UNIT
NLN12	Nylon Lock Nuts	Nylon	12.0mm	1	Each
NLN16	Nylon Lock Nuts	Nylon	16.0mm	1	Each
NLN20	Nylon Lock Nuts	Nylon	20.0mm	1	Each
NLN25	Nylon Lock Nuts	Nylon	25.0mm	1	Each
NLN32	Nylon Lock Nuts	Nylon	32.0mm	1	Each
NLN40	Nylon Lock Nuts	Nylon	40.0mm	1	Each
NLN50	Nylon Lock Nuts	Nylon	50.0mm	1	Each
NLN63	Nylon Lock Nuts	Nylon	63.0mm	1	Each



SCREWS / FASTENERS

Nail In Clips
Spring / Girder Clips
Metal Saddles
- Zinc
- Hot Dipped Gal
- 316 Grade Stainless Steel
PVC Wall Plugs
Nylon & Zinc Plasterfix
Bugle Head Needle Point Screws
Pan Head Needle Point Screws
Button Head Self Drilling Screws
Washer Head Needle Point Screws
Wafer Head Self Drilling Screws
Pit Screw Stainless Steel Hex Head Screws
Spring Toggles
Metal Hex Nuts
Metal Flat Washers
Metal Thread Screws
Roofing Bolts with Nut
Nail In Anchors
- Countersunk Head
- Mushroom Head
- Round Head

Nail In Clips

TuffStuff Nail In Clips are ideal for cable management and protection

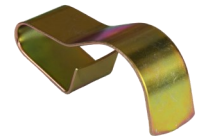
PART NUMBER	DESCRIPTION	SIZE	PACK QTY	PRICING UNIT
NCF1.5	Flat Nail In Clip	1.0/1.5mm T&E	500	Jar
NCF2.5	Flat Nail In Clip	2.5mm T&E	500	Jar
NCF4.0	Flat Nail In Clip	4.0mm T&E	500	Jar



Spring / Girder Clips

TuffStuff Spring/Girder Clips are made from high tensile steel for extra grip
Supplied in a handy plastic tub

PART NUMBER	DESCRIPTION	SIZE	PACK QTY	PRICING UNIT
SC0812	Spring/Girder Clip	8.0mm - 12.0mm	100	Tub
SC1620	Spring/Girder Clip	16.0mm - 20.0mm	100	Tub
SC2532	Spring/Girder Clip	25.0mm - 32.0mm	100	Tub



Saddles

TuffStuff Saddles are made only from strong steel
Offering the perfect solution for all your cable and conduit management needs
Offering 6.5mm fixing holes on each size for extra strength
Supplied in a handy plastic tub

Zinc Saddles

HALF	FULL	TYPE	SIZE	PACK QTY	PRICING UNIT
HS12Z	FS12Z	Zinc	12.0mm	100	Tub
HS16Z	FS16Z	Zinc	16.0mm	100	Tub
HS20Z	FS20Z	Zinc	20.0mm	100	Tub
HS25Z	FS25Z	Zinc	25.0mm	50	Tub
HS32Z	FS32Z	Zinc	32.0mm	50	Tub
HS40Z	FS40Z	Zinc	40.0mm	25	Tub
HS50Z	FS50Z	Zinc	50.0mm	20	Tub
HS63Z	FS63Z	Zinc	63.0mm	1	Each
HS80Z	FS80Z	Zinc	80.0mm	1	Each



Hot Dipped Gal Saddles

HALF	FULL	TYPE	SIZE	PACK QTY	PRICING UNIT
HS12HD	FS12HD	Hot Dipped Gal	12.0mm	100	Tub
HS16HD	FS16HD	Hot Dipped Gal	16.0mm	100	Tub
HS20HD	FS20HD	Hot Dipped Gal	20.0mm	100	Tub
HS25HD	FS25HD	Hot Dipped Gal	25.0mm	50	Tub
HS32HD	FS32HD	Hot Dipped Gal	32.0mm	50	Tub
HS40HD	FS40HD	Hot Dipped Gal	40.0mm	25	Tub
HS50HD	FS50HD	Hot Dipped Gal	50.0mm	20	Tub
HS63HD	FS63HD	Hot Dipped Gal	63.0mm	1	Each
HS80HD	FS80HD	Hot Dipped Gal	80.0mm	1	Each



316 Grade Stainless Steel Saddles

HALF	FULL	TYPE	SIZE	PACK QTY	PRICING UNIT
HS12SS	FS12SS	316 Grade SS	12.0mm	100	Tub
HS16SS	FS16SS	316 Grade SS	16.0mm	100	Tub
HS20SS	FS20SS	316 Grade SS	20.0mm	100	Tub
HS25SS	FS25SS	316 Grade SS	25.0mm	50	Tub
HS32SS	FS32SS	316 Grade SS	32.0mm	50	Tub
HS40SS	FS40SS	316 Grade SS	40.0mm	25	Tub
HS50SS	FS50SS	316 Grade SS	50.0mm	20	Tub



PVC Wall Plugs

PART NUMBER	DESCRIPTION	SIZE	COLOUR	PACK QTY	PRICING UNIT
PWP525	Wall Plug	5g x 25.0mm	White	100	Bag
PWP625	Wall Plug	6g x 25.0mm	Red	100	Bag
PWP725	Wall Plug	7g x 25.0mm	Green	100	Bag
PWP735	Wall Plug	7g x 35.0mm	Green	100	Bag
PWP750	Wall Plug	7g x 50.0mm	Green	100	Bag
PWP525/1000	Wall Plug	5g x 25.0mm	White	1000	Bucket
PWP625/1000	Wall Plug	6g x 25.0mm	Red	1000	Bucket
PWP725/1000	Wall Plug	7g x 25.0mm	Green	1000	Bucket
PWP735/1000	Wall Plug	7g x 35.0mm	Green	1000	Bucket
PWP750/1000	Wall Plug	7g x 50.0mm	Green	1000	Bucket



Nylon & Zinc Plasterfix

PART NUMBER	DESCRIPTION	SIZE	PACK QTY	PRICING UNIT
PFN	Plasterfix Hollow Wall Anchor Nylon	42.0mm	100	Tub
PFZ	Plasterfix Hollow Wall Anchor Zinc	42.0mm	100	Tub



Bugle Head Needle Point Screws

PART NUMBER	DESCRIPTION	TYPE	SIZE	PACK QTY	PRICING UNIT
BUG620	Bugle Head Needle Point	Steel	6g x 20.0mm	100	Bag
BUG720	Bugle Head Needle Point	Steel	7g x 20.0mm	100	Bag
BUG725	Bugle Head Needle Point	Steel	7g x 25.0mm	100	Bag
BUG730	Bugle Head Needle Point	Steel	7g x 30.0mm	100	Bag
BUG735	Bugle Head Needle Point	Steel	7g x 35.0mm	100	Bag
BUG745	Bugle Head Needle Point	Steel	7g x 45.0mm	100	Bag
BUG750	Bugle Head Needle Point	Steel	7g x 50.0mm	100	Bag
BUG850	Bugle Head Needle Point	Steel	8g x 50.0mm	50	Bag
BUG863	Bugle Head Needle Point	Steel	8g x 63.0mm	50	Bag
BUG875	Bugle Head Needle Point	Steel	8g x 75.0mm	50	Bag
<hr/>					
BUG620B	Bugle Head Needle Point	Steel	6g x 20.0mm	500	Bucket
BUG720B	Bugle Head Needle Point	Steel	7g x 20.0mm	500	Bucket
BUG725B	Bugle Head Needle Point	Steel	7g x 25.0mm	500	Bucket
BUG730B	Bugle Head Needle Point	Steel	7g x 30.0mm	500	Bucket
BUG735B	Bugle Head Needle Point	Steel	7g x 35.0mm	500	Bucket
BUG745B	Bugle Head Needle Point	Steel	7g x 45.0mm	500	Bucket
BUG750B	Bugle Head Needle Point	Steel	7g x 50.0mm	250	Bucket
BUG850B	Bugle Head Needle Point	Steel	8g x 50.0mm	250	Bucket
BUG863B	Bugle Head Needle Point	Steel	8g x 63.0mm	250	Bucket
BUG875B	Bugle Head Needle Point	Steel	8g x 75.0mm	250	Bucket
<hr/>					
BUG620LP	Bugle Head Needle Point	Steel	6g x 20.0mm	1000	Large Pail
BUG720LP	Bugle Head Needle Point	Steel	7g x 20.0mm	1000	Large Pail
BUG725LP	Bugle Head Needle Point	Steel	7g x 25.0mm	1000	Large Pail
BUG730LP	Bugle Head Needle Point	Steel	7g x 30.0mm	1000	Large Pail
BUG735LP	Bugle Head Needle Point	Steel	7g x 35.0mm	1000	Large Pail
BUG745LP	Bugle Head Needle Point	Steel	7g x 45.0mm	1000	Large Pail
BUG750LP	Bugle Head Needle Point	Steel	7g x 50.0mm	500	Large Pail
BUG850LP	Bugle Head Needle Point	Steel	8g x 50.0mm	500	Large Pail
BUG863LP	Bugle Head Needle Point	Steel	8g x 63.0mm	500	Large Pail
BUG875LP	Bugle Head Needle Point	Steel	8g x 75.0mm	500	Large Pail



Pan Head Needle Point Screws

PART NUMBER	DESCRIPTION	TYPE	SIZE	PACK QTY	PRICING UNIT
PAN620	Pan Head Needle Point	Steel	6g x 20.0mm	100	Bag
PAN630	Pan Head Needle Point	Steel	6g x 30.0mm	100	Bag
PAN640	Pan Head Needle Point	Steel	6g x 40.0mm	100	Bag
PAN650	Pan Head Needle Point	Steel	6g x 50.0mm	100	Bag
PAN712	Pan Head Needle Point	Steel	7g x 12.0mm	100	Bag
PAN720	Pan Head Needle Point	Steel	7g x 20.0mm	100	Bag
PAN725	Pan Head Needle Point	Steel	7g x 25.0mm	100	Bag
PAN730	Pan Head Needle Point	Steel	7g x 30.0mm	100	Bag
PAN740	Pan Head Needle Point	Steel	7g x 40.0mm	100	Bag
PAN750	Pan Head Needle Point	Steel	7g x 50.0mm	100	Bag
<hr/>					
PAN620B	Pan Head Needle Point	Steel	6g x 20.0mm	500	Bucket
PAN630B	Pan Head Needle Point	Steel	6g x 30.0mm	500	Bucket
PAN640B	Pan Head Needle Point	Steel	6g x 40.0mm	500	Bucket
PAN650B	Pan Head Needle Point	Steel	6g x 50.0mm	500	Bucket
PAN712B	Pan Head Needle Point	Steel	7g x 12.0mm	500	Bucket
PAN720B	Pan Head Needle Point	Steel	7g x 20.0mm	500	Bucket
PAN725B	Pan Head Needle Point	Steel	7g x 25.0mm	500	Bucket
PAN730B	Pan Head Needle Point	Steel	7g x 30.0mm	500	Bucket
PAN740B	Pan Head Needle Point	Steel	7g x 40.0mm	500	Bucket
PAN750B	Pan Head Needle Point	Steel	7g x 50.0mm	250	Bucket
<hr/>					
PAN620LP	Pan Head Needle Point	Steel	6g x 20.0mm	1000	Large Pail
PAN630LP	Pan Head Needle Point	Steel	6g x 30.0mm	1000	Large Pail
PAN640LP	Pan Head Needle Point	Steel	6g x 40.0mm	1000	Large Pail
PAN650LP	Pan Head Needle Point	Steel	6g x 50.0mm	1000	Large Pail
PAN712LP	Pan Head Needle Point	Steel	7g x 12.0mm	1000	Large Pail
PAN720LP	Pan Head Needle Point	Steel	7g x 20.0mm	1000	Large Pail
PAN725LP	Pan Head Needle Point	Steel	7g x 25.0mm	1000	Large Pail
PAN730LP	Pan Head Needle Point	Steel	7g x 30.0mm	1000	Large Pail
PAN740LP	Pan Head Needle Point	Steel	7g x 40.0mm	1000	Large Pail
PAN750LP	Pan Head Needle Point	Steel	7g x 50.0mm	500	Large Pail



Button Head Self Drilling Screws

PART NUMBER	DESCRIPTION	TYPE	SIZE	PACK QTY	PRICING UNIT
BUTS812	Button Head Self Drilling	Steel	8g x 12.0mm	100	Bag
BUTS825	Button Head Self Drilling	Steel	8g x 25.0mm	100	Bag
BUTS832	Button Head Self Drilling	Steel	8g x 32.0mm	100	Bag
BUTS812B	Button Head Self Drilling	Steel	8g x 12.0mm	500	Bucket
BUTS825B	Button Head Self Drilling	Steel	8g x 25.0mm	500	Bucket
BUTS832B	Button Head Self Drilling	Steel	8g x 32.0mm	500	Bucket
BUTS812LP	Button Head Self Drilling	Steel	8g x 12.0mm	1000	Large Pail
BUTS825LP	Button Head Self Drilling	Steel	8g x 25.0mm	1000	Large Pail
BUTS832LP	Button Head Self Drilling	Steel	8g x 32.0mm	1000	Large Pail



Washer Head Needle Point Screws

PART NUMBER	DESCRIPTION	TYPE	SIZE	PACK QTY	PRICING UNIT
BUTN815	Washer Head Needle Point	Steel	8g x 15.0mm	100	Bag
BUTN825	Washer Head Needle Point	Steel	8g x 25.0mm	100	Bag
BUTN832	Washer Head Needle Point	Steel	8g x 32.0mm	100	Bag
BUTN815B	Washer Head Needle Point	Steel	8g x 15.0mm	500	Bucket
BUTN825B	Washer Head Needle Point	Steel	8g x 25.0mm	500	Bucket
BUTN832B	Washer Head Needle Point	Steel	8g x 32.0mm	500	Bucket
BUTN815LP	Washer Head Needle Point	Steel	8g x 15.0mm	1000	Large Pail
BUTN825LP	Washer Head Needle Point	Steel	8g x 25.0mm	1000	Large Pail
BUTN832LP	Washer Head Needle Point	Steel	8g x 32.0mm	1000	Large Pail



Wafer Head Self Drilling Screws

PART NUMBER	DESCRIPTION	TYPE	SIZE	PACK QTY	PRICING UNIT
WAF1022	Wafer Head Self Drilling	Steel	10g x 22.0mm	100	Bag
WAF1032	Wafer Head Self Drilling	Steel	10g x 32.0mm	100	Bag
WAF1040	Wafer Head Self Drilling	Steel	10g x 40.0mm	100	Bag
WAF1022B	Wafer Head Self Drilling	Steel	10g x 22.0mm	500	Bucket
WAF1032B	Wafer Head Self Drilling	Steel	10g x 32.0mm	500	Bucket
WAF1040B	Wafer Head Self Drilling	Steel	10g x 40.0mm	500	Bucket
WAF1022LP	Wafer Head Self Drilling	Steel	10g x 22.0mm	1000	Large Pail
WAF1032LP	Wafer Head Self Drilling	Steel	10g x 32.0mm	1000	Large Pail
WAF1040LP	Wafer Head Self Drilling	Steel	10g x 40.0mm	1000	Large Pail



Pit Screw Stainless Steel Hex Head

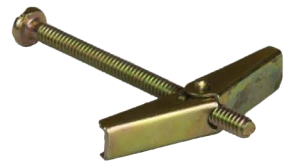
TuffStuff Telstra Pit Self Drilling Screws are manufactured from 304 Grade Stainless Steel

PART NUMBER	DESCRIPTION	TYPE	SIZE	PACK QTY	PRICING UNIT
TEL17PIT	304 Grade Stainless Steel Hex Head Screw	Stainless Steel	#14-10G x 35.0mm	100	Pack



Spring Toggles

PART NUMBER	DESCRIPTION	TYPE	SIZE	PACK QTY	PRICING UNIT
ST182	Spring Toggles	Steel	1/8" x 2"	25	Bag
ST183	Spring Toggles	Steel	1/8" x 3"	20	Bag
ST3162	Spring Toggles	Steel	3/16" x 2"	25	Bag
ST3163	Spring Toggles	Steel	3/16" x 3"	15	Bag



Metal Hex Nuts

PART NUMBER	DESCRIPTION	TYPE	SIZE	PACK QTY	PRICING UNIT
HN532	Metal Press Hex Nuts	Zinc	5/32"	100	Bag
HN316	Metal Press Hex Nuts	Zinc	3/16"	100	Bag



Metal Flat Washers

PART NUMBER	DESCRIPTION	TYPE	SIZE	PACK QTY	PRICING UNIT
MW532	Metal Washers	Zinc	5/32"	100	Bag
MW316	Metal Washers	Zinc	3/16"	100	Bag



Metal Thread Screws

PART NUMBER	DESCRIPTION	TYPE	SIZE	PACK QTY	PRICING UNIT
MT53212	Pozi Round Head Metal Thread Screw	Zinc	5/32" x 1/2"	100	Bag
MT53234	Pozi Round Head Metal Thread Screw	Zinc	5/32" x 3/4"	100	Bag
MT5321	Pozi Round Head Metal Thread Screw	Zinc	5/32" x 1"	100	Bag
MT532114	Pozi Round Head Metal Thread Screw	Zinc	5/32" x 1-1/4"	100	Bag
MT532112	Pozi Round Head Metal Thread Screw	Zinc	5/32" x 1-1/2"	100	Bag
MT5322	Pozi Round Head Metal Thread Screw	Zinc	5/32" x 2"	100	Bag
MT532212	Pozi Round Head Metal Thread Screw	Zinc	5/32" x 2-1/2"	100	Bag
MT5323	Pozi Round Head Metal Thread Screw	Zinc	5/32" x 3"	100	Bag
MT31612	Pozi Round Head Metal Thread Screw	Zinc	3/16" x 1/2"	100	Bag
MT31634	Pozi Round Head Metal Thread Screw	Zinc	3/16" x 3/4"	100	Bag
MT3161	Pozi Round Head Metal Thread Screw	Zinc	3/16" x 1"	100	Bag
MT316114	Pozi Round Head Metal Thread Screw	Zinc	3/16" x 1-1/4"	100	Bag
MT316112	Pozi Round Head Metal Thread Screw	Zinc	3/16" x 1-1/2"	100	Bag
MT3162	Pozi Round Head Metal Thread Screw	Zinc	3/16" x 2"	100	Bag
MT316212	Pozi Round Head Metal Thread Screw	Zinc	3/16" x 2-1/2"	100	Bag
MT3163	Pozi Round Head Metal Thread Screw	Zinc	3/16" x 3"	100	Bag



Roofing Bolts with Nut

PART NUMBER	DESCRIPTION	TYPE	SIZE	PACK QTY	PRICING UNIT
MT3161RB	Pozi Round Head Metal Thread Zinc Screw with Nut	Zinc	3/16" x 1"	50	Bag
MT3162RB	Pozi Round Head Metal Thread Zinc Screw with Nut	Zinc	3/16" x 2"	50	Bag
MT5321RB	Pozi Round Head Metal Thread Zinc Screw with Nut	Zinc	5/32" x 1"	50	Bag
MT5322RB	Pozi Round Head Metal Thread Zinc Screw with Nut	Zinc	5/32" x 2"	50	Bag



Nail In Anchors

Countersunk Head

PART NUMBER	DESCRIPTION	TYPE	SIZE	PACK QTY	PRICING UNIT
CHNA525	Nail In Anchor Countersunk Head	Nylon	5.0 x 25.0mm	100	Bag
CHNA540	Nail In Anchor Countersunk Head	Nylon	5.0 x 40.0mm	50	Bag
CHNA625	Nail In Anchor Countersunk Head	Nylon	6.5 x 25.0mm	100	Bag
CHNA640	Nail In Anchor Countersunk Head	Nylon	6.5 x 40.0mm	50	Bag
CHNA650	Nail In Anchor Countersunk Head	Nylon	6.5 x 50.0mm	25	Bag
CHNA675	Nail In Anchor Countersunk Head	Nylon	6.5 x 75.0mm	25	Bag



Mushroom Head

PART NUMBER	DESCRIPTION	TYPE	SIZE	PACK QTY	PRICING UNIT
MHNA525	Nail In Anchor Mushroom Head	Nylon	5.0 x 25.0mm	100	Bag
MHNA540	Nail In Anchor Mushroom Head	Nylon	5.0 x 40.0mm	50	Bag
MHNA625	Nail In Anchor Mushroom Head	Nylon	6.5 x 25.0mm	100	Bag
MHNA640	Nail In Anchor Mushroom Head	Nylon	6.5 x 40.0mm	50	Bag
MHNA650	Nail In Anchor Mushroom Head	Nylon	6.5 x 50.0mm	25	Bag
MHNA675	Nail In Anchor Mushroom Head	Nylon	6.5 x 75.0mm	25	Bag



Round Head

PART NUMBER	DESCRIPTION	TYPE	SIZE	PACK QTY	PRICING UNIT
RHNA525	Nail In Anchor Round Head	Nylon	5.0 x 25.0mm	100	Bag
RHNA540	Nail In Anchor Round Head	Nylon	5.0 x 40.0mm	50	Bag
RHNA625	Nail In Anchor Round Head	Nylon	6.5 x 25.0mm	100	Bag
RHNA640	Nail In Anchor Round Head	Nylon	6.5 x 40.0mm	50	Bag
RHNA650	Nail In Anchor Round Head	Nylon	6.5 x 50.0mm	25	Bag
RHNA675	Nail In Anchor Round Head	Nylon	6.5 x 75.0mm	25	Bag





Specialising in unique and complex project solutions. For all your customised needs contact us on 02 9830 8600.



HEATSHRINK

Thin Wall Tubing Lengths
Thin Wall Tubing Rolls
Glue Lined Thin Wall Tubing
Glue Lined Medium Wall Tubing
Breakout Boots Glue Lined
End Caps Glue Lined

Thin Wall Tubing Lengths (Enviro Friendly, UL, CSA, ROHS approved, Black UV Stabilised)

TuffStuff Thin Wall Lengths are 2:1 Shrink Ratio

Flame Retardant

Operating Temp: -55°C to +125°C

Environmentally friendly and low smoke

Colours: Black, Yellow, Blue, Green, Clear, White, Orange, Red, Yellow/Green

PART NUMBER	DESCRIPTION	SIZE	PACK QTY	PRICING UNIT
HS1.5-L - xx	Thin Wall Heatshrink Length	1.5mm - 0.75mm	1.2m/length	Each
HS2.5-L - xx	Thin Wall Heatshrink Length	2.5mm - 1.25mm	1.2m/length	Each
HS3-L - xx	Thin Wall Heatshrink Length	3.0mm - 1.5mm	1.2m/length	Each
HS5-L - xx	Thin Wall Heatshrink Length	5.0mm - 2.5mm	1.2m/length	Each
HS7-L - xx	Thin Wall Heatshrink Length	7.0mm - 3.5mm	1.2m/length	Each
HS10-L - xx	Thin Wall Heatshrink Length	10.0mm - 5.0mm	1.2m/length	Each
HS13-L - xx	Thin Wall Heatshrink Length	13.0mm - 6.5mm	1.2m/length	Each
HS20-L - xx	Thin Wall Heatshrink Length	20.0mm - 10.0mm	1.2m/length	Each
HS25-L - xx	Thin Wall Heatshrink Length	25.0mm - 12.5mm	1.2m/length	Each
HS40-L - xx	Thin Wall Heatshrink Length	40.0mm - 20.0mm	1.2m/length	Each
HS50-L - xx	Thin Wall Heatshrink Length	50.0mm - 25.0mm	1.2m/length	Each
HS80-L - xx	Thin Wall Heatshrink Length	80.0mm - 40.0mm	1.2m/length	Each
HS100-L - xx	Thin Wall Heatshrink Length	100.0mm - 50.0mm	1.2m/length	Each
HS120-L - xx	Thin Wall Heatshrink Length	120.0mm - 60.0mm	1.2m/length	Each

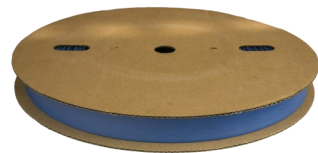


Add colour prefix on order

Example: HS1.5L 'BK' for black

Thin Wall Tubing Rolls (Environmentally Friendly, UL, CSA, ROHS approved)

PART NUMBER	DESCRIPTION	SIZE	PACK QTY	PRICING UNIT
HS1.5-R - xx	Thin Wall Heatshrink Roll	1.5mm - 0.75mm	200m	Roll
HS2.5-R - xx	Thin Wall Heatshrink Roll	2.5mm - 1.25mm	200m	Roll
HS3-R - xx	Thin Wall Heatshrink Roll	3.0mm - 1.5mm	200m	Roll
HS5-R - xx	Thin Wall Heatshrink Roll	5.0mm - 2.5mm	100m	Roll
HS7-R - xx	Thin Wall Heatshrink Roll	7.0mm - 3.5mm	100m	Roll
HS10-R - xx	Thin Wall Heatshrink Roll	10.0mm - 5.0mm	100m	Roll
HS13-R - xx	Thin Wall Heatshrink Roll	13.0mm - 6.5mm	100m	Roll
HS20-R - xx	Thin Wall Heatshrink Roll	20.0mm - 10.0mm	100m	Roll
HS25-R - xx	Thin Wall Heatshrink Roll	25.0mm - 12.5mm	50m	Roll
HS40-R - xx	Thin Wall Heatshrink Roll	40.0mm - 20.0mm	50m	Roll
HS50-R - xx	Thin Wall Heatshrink Roll	50.0mm - 25.0mm	25m	Roll
HS80-R - xx	Thin Wall Heatshrink Roll	80.0mm - 40.0mm	25m	Roll
HS100-R - xx	Thin Wall Heatshrink Roll	100.0mm - 50.0mm	25m	Roll
HS120-R - xx	Thin Wall Heatshrink Roll	120.0mm - 60.0mm	15m	Roll



Add colour prefix on order

Example: HS1.5L 'BK' for black

Glue Lined Thin Wall Tubing (Enviro Friendly, UL, CSA, ROHS approved, UV Stabilised)

TuffStuff Glue Lined Thin Wall offers the highest level of waterproofing protection

3:1 Shrink Ratio

Operating Temp: -55°C to +125°C

125° degree flame retardant x linked

Flexible and quick to shrink

Environmentally friendly and low smoke

Colours: Black (Red on request)

PART NUMBER	DESCRIPTION	SIZE	PACK QTY	PRICING UNIT
TWG3	Glue Lined Thin Wall Tubing Length	3.2mm - 1.1mm	1.2m/length	Each
TWG5	Glue Lined Thin Wall Tubing Length	4.8mm - 1.6mm	1.2m/length	Each
TWG7	Glue Lined Thin Wall Tubing Length	6.4mm - 2.2mm	1.2m/length	Each
TWG10	Glue Lined Thin Wall Tubing Length	9.5mm - 3.2mm	1.2m/length	Each
TWG13	Glue Lined Thin Wall Tubing Length	12.7mm - 4.2mm	1.2m/length	Each
TWG20	Glue Lined Thin Wall Tubing Length	19.1mm - 6.4mm	1.2m/length	Each
TWG25	Glue Lined Thin Wall Tubing Length	25.4mm - 8.5mm	1.2m/length	Each
TWG40	Glue Lined Thin Wall Tubing Length	39.0mm - 13.0mm	1.2m/length	Each
TWG50	Glue Lined Thin Wall Tubing Length	50.0mm - 16.0mm	1.2m/length	Each
TWG75	Glue Lined Thin Wall Tubing Length	75.0mm - 25.0mm	1.2m/length	Each
TWG100	Glue Lined Thin Wall Tubing Length	100.0mm - 34.0mm	1.2m/length	Each



Glue Lined Medium Wall Tubing (Enviro Friendly, ROHS approved, UV Stabilised)

TuffStuff Glue Lined Medium Wall offers the highest level of waterproofing protection

3:1 Shrink Ratio

Operating Temp: -55°C to +125°C

125° degree flame retardant x linked

Flexible and quick to shrink

Environmentally friendly and low smoke

Double Glue Lined

PART NUMBER	DESCRIPTION	SIZE	PACK QTY	PRICING UNIT
MWG12	Double Glue Lined Medium Wall Tubing Length	12.0mm - 4.0mm	1.2m/length	Each
MWG22	Double Glue Lined Medium Wall Tubing Length	22.0mm - 7.0mm	1.2m/length	Each
MWG27	Double Glue Lined Medium Wall Tubing Length	27.0mm - 9.0mm	1.2m/length	Each
MWG34	Double Glue Lined Medium Wall Tubing Length	34.0mm - 10.0mm	1.2m/length	Each
MWG40	Double Glue Lined Medium Wall Tubing Length	40.0mm - 12.0mm	1.2m/length	Each
MWG56	Double Glue Lined Medium Wall Tubing Length	56.0mm - 18.0mm	1.2m/length	Each
MWG92	Double Glue Lined Medium Wall Tubing Length	92.0mm - 27.0mm	1.2m/length	Each
MWG120	Double Glue Lined Medium Wall Tubing Length	120.0mm - 36.0mm	1.2m/length	Each
MWG140	Double Glue Lined Medium Wall Tubing Length	140.0mm - 47.0mm	1.2m/length	Each



Breakout Boots Glue Lined (UL, CSA, ROHS approved, UV Stabilised)

TuffStuff Breakout Boots are Glue Lined and are quick and easy to use
 Water tight and highly resistant to ultraviolet rays and various chemicals
 Adhesive lined
 3:1 shrink ratio
 Temp -40°C to +100°C

PART NUMBER	DESCRIPTION	SIZE/BODY	FINGERS	PRICING UNIT
HB2/1	Glue Lined 2way Break Out	32.0mm - 8.0mm	14.0mm - 3.0mm	Each
HB2/3	Glue Lined 2way Break Out	60.0mm - 20.0mm	24.0mm - 7.0mm	Each
HB3/1	Glue Lined 3way Break Out	30.0mm - 9.0mm	12.0mm - 3.0mm	Each
HB320	Glue Lined 3way Break Out	37.0mm - 14.0mm	15.0mm - 4.0mm	Each
HB330	Glue Lined 3way Break Out	70.0mm - 20.0mm	27.0mm - 8.0mm	Each
HB335	Glue Lined 3way Break Out	80.0mm - 30.0mm	36.0mm - 13.0mm	Each
HB340	Glue Lined 3way Break Out	110.0mm - 45.0mm	55.0mm - 20.0mm	Each
HB410	Glue Lined 4way Break Out	35.0mm - 12.0mm	10.0mm - 3.0mm	Each
HB420	Glue Lined 4way Break Out	40.0mm - 12.0mm	14.0mm - 3.0mm	Each
HB430	Glue Lined 4way Break Out	58.0mm - 26.0mm	21.0mm - 7.0mm	Each
HB440	Glue Lined 4way Break Out	80.0mm - 31.0mm	31.0mm - 10.0mm	Each
HB450	Glue Lined 4way Break Out	90.0mm - 44.0mm	35.0mm - 13.0mm	Each
HB460	Glue Lined 4way Break Out	125.0mm - 44.0mm	40.0mm - 14.0mm	Each



End Caps Glue Lined (UL, CSA, ROHS approved, UV Stabilised)

TuffStuff End Caps are Glue Lined and offer a reliable seal to cable ends
 Water tight and highly resistant to ultraviolet rays and various chemicals
 Adhesive lined
 3:1 shrink ratio
 Temp -40°C to +100°C

PART NUMBER	DESCRIPTION	SIZE	PACK QTY	PRICING UNIT
EC0	End Cap Glue Lined	6.0mm - 2.0mm	1	Each
EC1	End Cap Glue Lined	12.0mm - 4.0mm	1	Each
EC2	End Cap Glue Lined	20.0mm - 7.0mm	1	Each
EC3	End Cap Glue Lined	40.0mm - 14.0mm	1	Each
EC4	End Cap Glue Lined	55.0mm - 18.0mm	1	Each
EC5	End Cap Glue Lined	100.0mm - 34.0mm	1	Each
EC6	End Cap Glue Lined	120.0mm - 40.0mm	1	Each
EC7	End Cap Glue Lined	154.0mm - 52.0mm	1	Each





LUGS / LINKS / CONNECTORS

Brass Line Taps
Junction Boxes
Screw Connectors
Flared Entry Copper Crimp Lugs
Circuit Breaker Narrow Palm Lugs
Long Barrel Copper Crimp Lugs
Long Palm & Long Barrel Copper Crimp Lugs
Bi Metal Crimp Lugs
Copper Crimp Links
Copper Reducing Links
Aluminium Crimp Type Lugs
Aluminium Crimp Type Links
Boot Lace Connectors (cord ends)
- Insulated
- Twin Insulated
Crimpers
Staubli MC4 Connectors
MC4 Connectors

Brass Line Taps

TuffStuff Brass Line Taps are easy to use and reliable
 Manufactured from Copper Alloy
 Operating Temp: -55°C to +100°C

PART NUMBER	DESCRIPTION	SIZE	PACK QTY	PRICING UNIT
LT16	Brass Line Tap	16.0mm	1	Each
LT35	Brass Line Tap	35.0mm	1	Each
LT70	Brass Line Tap	70.0mm	1	Each
LT95	Brass Line Tap	95.0mm	1	Each
LT185	Brass Line Tap	185.0mm	1	Each



Junction Boxes

PART NUMBER	DESCRIPTION	SIZE	PACK QTY	PRICING UNIT
SJBS	Square Junction Box with Connectors	Small	10	Each
SJBL	Square Junction Box with Connectors	Large	10	Each
SJBM	Square Junction Box with Screw Connect Strip	Mini	10	Pack



Screw Connectors

TuffStuff Screw Connectors are easy to use and offer the best possible protection
 New multi purpose AS3000 compliant single screw connector offers easy termination of both Power & Earth cable

PART NUMBER	DESCRIPTION	COLOUR	SIZE	PACK QTY	PRICING UNIT
SC1	Single Screw Connector 32amp	Clear	2 x 6.0mm	100	Jar
"NEW" SC1-40	Single Screw Connector 40amp	Clear	2 + 3 x 6.0mm	50	Jar
SC2	Double Screw Connector 32amp	Clear	3 x 6.0mm	50	Jar
SC2-16	Double Screw Connector 10mm ²	Clear	2 x 16.0mm	1	Each
SC2-35	Double Screw Connector 16mm ²	Clear	2 x 35.0mm	1	Each



SC1



SC1-40



SC2



SC2-16



SC2-35



Copper Crimp Lugs (Approved. IEC 61238-1-2003 & ASNZ 4325-1-1995)

Flared Entry

TuffStuff Copper Lugs are fully annealed, made from 99% oxygen free copper
Electro Tinned
Operating Temp: -55°C to +155°C
Supplied in a handy plastic tub

PART NUMBER	DESCRIPTION	SIZE	PACK QTY	PRICING UNIT
CL1.5-4	Copper Crimp Lug	1.5mm sq - 4.0mm stud	100	Tub
CL1.5-5	Copper Crimp Lug	1.5mm sq - 5.0mm stud	100	Tub
CL1.5-6	Copper Crimp Lug	1.5mm sq - 6.0mm stud	100	Tub
CL1.5-8	Copper Crimp Lug	1.5mm sq - 8.0mm stud	100	Tub
CL2.5-4	Copper Crimp Lug	2.5mm sq - 4.0mm stud	100	Tub
CL2.5-5	Copper Crimp Lug	2.5mm sq - 5.0mm stud	100	Tub
CL2.5-6	Copper Crimp Lug	2.5mm sq - 6.0mm stud	100	Tub
CL2.5-8	Copper Crimp Lug	2.5mm sq - 8.0mm stud	100	Tub
CL2.5-10	Copper Crimp Lug	2.5mm sq - 10.0mm stud	100	Tub
CL4-4	Copper Crimp Lug	4.0mm sq - 4.0mm stud	100	Tub
CL4-5	Copper Crimp Lug	4.0mm sq - 5.0mm stud	100	Tub
CL4-6	Copper Crimp Lug	4.0mm sq - 6.0mm stud	100	Tub
CL4-8	Copper Crimp Lug	4.0mm sq - 8.0mm stud	100	Tub
CL4-10	Copper Crimp Lug	4.0mm sq - 10.0mm stud	100	Tub
CL6-4	Copper Crimp Lug	6.0mm sq - 4.0mm stud	100	Tub
CL6-5	Copper Crimp Lug	6.0mm sq - 5.0mm stud	100	Tub
CL6-6	Copper Crimp Lug	6.0mm sq - 6.0mm stud	100	Tub
CL6-8	Copper Crimp Lug	6.0mm sq - 8.0mm stud	100	Tub
CL6-10	Copper Crimp Lug	6.0mm sq - 10.0mm stud	100	Tub
CL10-5	Flared Entry Copper Crimp Lug	10.0mm sq - 5.0mm stud	100	Tub
CL10-6	Flared Entry Copper Crimp Lug	10.0mm sq - 6.0mm stud	100	Tub
CL10-8	Flared Entry Copper Crimp Lug	10.0mm sq - 8.0mm stud	100	Tub
CL10-10	Flared Entry Copper Crimp Lug	10.0mm sq - 10.0mm stud	100	Tub
CL10-12	Flared Entry Copper Crimp Lug	10.0mm sq - 12.0mm stud	100	Tub
CL16-5	Flared Entry Copper Crimp Lug	16.0mm sq - 5.0mm stud	50	Tub
CL16-6	Flared Entry Copper Crimp Lug	16.0mm sq - 6.0mm stud	50	Tub
CL16-8	Flared Entry Copper Crimp Lug	16.0mm sq - 8.0mm stud	50	Tub
CL16-10	Flared Entry Copper Crimp Lug	16.0mm sq - 10.0mm stud	50	Tub
CL16-12	Flared Entry Copper Crimp Lug	16.0mm sq - 12.0mm stud	50	Tub
CL25-6	Flared Entry Copper Crimp Lug	25.0mm sq - 6.0mm stud	50	Tub
CL25-8	Flared Entry Copper Crimp Lug	25.0mm sq - 8.0mm stud	50	Tub
CL25-10	Flared Entry Copper Crimp Lug	25.0mm sq - 10.0mm stud	50	Tub
CL25-12	Flared Entry Copper Crimp Lug	25.0mm sq - 12.0mm stud	50	Tub
CL35-6	Flared Entry Copper Crimp Lug	35.0mm sq - 6.0mm stud	50	Tub
CL35-8	Flared Entry Copper Crimp Lug	35.0mm sq - 8.0mm stud	50	Tub
CL35-10	Flared Entry Copper Crimp Lug	35.0mm sq - 10.0mm stud	50	Tub
CL35-12	Flared Entry Copper Crimp Lug	35.0mm sq - 12.0mm stud	50	Tub
CL50-6	Flared Entry Copper Crimp Lug	50.0mm sq - 6.0mm stud	50	Tub



Copper Crimp Lugs Cont.

PART NUMBER	DESCRIPTION	SIZE	PACK QTY	PRICING UNIT
CL50-8	Flared Entry Copper Crimp Lug	50.0mm sq - 8.0mm stud	50	Tub
CL50-10	Flared Entry Copper Crimp Lug	50.0mm sq - 10.0mm stud	50	Tub
CL50-12	Flared Entry Copper Crimp Lug	50.0mm sq - 12.0mm stud	50	Tub
CL70-6	Flared Entry Copper Crimp Lug	70.0mm sq - 6.0mm stud	25	Tub
CL70-8	Flared Entry Copper Crimp Lug	70.0mm sq - 8.0mm stud	25	Tub
CL70-10	Flared Entry Copper Crimp Lug	70.0mm sq - 10.0mm stud	25	Tub
CL70-12	Flared Entry Copper Crimp Lug	70.0mm sq - 12.0mm stud	25	Tub
CL70-16	Flared Entry Copper Crimp Lug	70.0mm sq - 16.0mm stud	25	Tub
CL95-6	Flared Entry Copper Crimp Lug	95.0mm sq - 6.0mm stud	25	Tub
CL95-8	Flared Entry Copper Crimp Lug	95.0mm sq - 8.0mm stud	25	Tub
CL95-10	Flared Entry Copper Crimp Lug	95.0mm sq - 10.0mm stud	25	Tub
CL95-12	Flared Entry Copper Crimp Lug	95.0mm sq - 12.0mm stud	25	Tub
CL95-16	Flared Entry Copper Crimp Lug	95.0mm sq - 16.0mm stud	25	Tub
CL120-8	Flared Entry Copper Crimp Lug	120.0mm sq - 8.0mm stud	1	Each
CL120-10	Flared Entry Copper Crimp Lug	120.0mm sq - 10.0mm stud	1	Each
CL120-12	Flared Entry Copper Crimp Lug	120.0mm sq - 12.0mm stud	1	Each
CL120-16	Flared Entry Copper Crimp Lug	120.0mm sq - 16.0mm stud	1	Each
CL120-20	Flared Entry Copper Crimp Lug	120.0mm sq - 20.0mm stud	1	Each
CL150-8	Flared Entry Copper Crimp Lug	150.0mm sq - 8.0mm stud	1	Each
CL150-10	Flared Entry Copper Crimp Lug	150.0mm sq - 10.0mm stud	1	Each
CL150-12	Flared Entry Copper Crimp Lug	150.0mm sq - 12.0mm stud	1	Each
CL150-16	Flared Entry Copper Crimp Lug	150.0mm sq - 16.0mm stud	1	Each
CL150-20	Flared Entry Copper Crimp Lug	150.0mm sq - 20.0mm stud	1	Each
CL185-10	Flared Entry Copper Crimp Lug	185.0mm sq - 10.0mm stud	1	Each
CL185-12	Flared Entry Copper Crimp Lug	185.0mm sq - 12.0mm stud	1	Each
CL185-16	Flared Entry Copper Crimp Lug	185.0mm sq - 16.0mm stud	1	Each
CL185-20	Flared Entry Copper Crimp Lug	185.0mm sq - 20.0mm stud	1	Each
CL240-10	Flared Entry Copper Crimp Lug	240.0mm sq - 10.0mm stud	1	Each
CL240-12	Flared Entry Copper Crimp Lug	240.0mm sq - 12.0mm stud	1	Each
CL240-16	Flared Entry Copper Crimp Lug	240.0mm sq - 16.0mm stud	1	Each
CL240-BL	Flared Entry Copper Crimp Lug	240.0mm sq blank	1	Each
CL300-10	Flared Entry Copper Crimp Lug	300.0mm sq - 10.0mm stud	1	Each
CL300-12	Flared Entry Copper Crimp Lug	300.0mm sq - 12.0mm stud	1	Each
CL300-16	Flared Entry Copper Crimp Lug	300.0mm sq - 16.0mm stud	1	Each
CL300-BL	Flared Entry Copper Crimp Lug	300.0mm sq blank	1	Each
CL400-12	Flared Entry Copper Crimp Lug	400.0mm sq - 12.0mm stud	1	Each
CL400-16	Flared Entry Copper Crimp Lug	400.0mm sq - 16.0mm stud	1	Each
CL400-20	Flared Entry Copper Crimp Lug	400.0mm sq - 20.0mm stud	1	Each
CL400-BL	Flared Entry Copper Crimp Lug	400.0mm sq blank	1	Each
CL500-12	Flared Entry Copper Crimp Lug	500.0mm sq - 12.0mm stud	1	Each
CL500-16	Flared Entry Copper Crimp Lug	500.0mm sq - 16.0mm stud	1	Each



Copper Crimp Lugs Cont.

PART NUMBER	DESCRIPTION	SIZE	PACK QTY	PRICING UNIT
CL500-BL	Flared Entry Copper Crimp Lug	500.0mm sq blank	1	Each
CL630-12	Flared Entry Copper Crimp Lug	630.0mm sq - 12.0mm stud	1	Each
CL630-16	Flared Entry Copper Crimp Lug	630.0mm sq - 16.0mm stud	1	Each
CL630-BL	Flared Entry Copper Crimp Lug	630.0mm sq blank	1	Each
CL800-BL	Flared Entry Copper Crimp Lug	800.0mm sq blank	1	Each
CL1000-BL	Flared Entry Copper Crimp Lug	1000.0mm sq blank	1	Each



Circuit Breaker Narrow Palm Crimp Lugs

PART NUMBER	DESCRIPTION	SIZE	PACK QTY	PRICING UNIT
NPL25-6	Circuit Breaker Lug Narrow Palm	25.0mm sq - 6.0mm	1	Each
NPL25-8	Circuit Breaker Lug Narrow Palm	25.0mm sq - 8.0mm	1	Each
NPL35-6	Circuit Breaker Lug Narrow Palm	35.0mm sq - 6.0mm	1	Each
NPL35-8	Circuit Breaker Lug Narrow Palm	35.0mm sq - 8.0mm	1	Each
NPL50-6	Circuit Breaker Lug Narrow Palm	50.0mm sq - 6.0mm	1	Each
NPL50-8	Circuit Breaker Lug Narrow Palm	50.0mm sq - 8.0mm	1	Each
NPL50-10	Circuit Breaker Lug Narrow Palm	50.0mm sq - 10.0mm	1	Each
NPL70-6	Circuit Breaker Lug Narrow Palm	70.0mm sq - 6.0mm	1	Each
NPL70-8	Circuit Breaker Lug Narrow Palm	70.0mm sq - 8.0mm	1	Each
NPL70-10	Circuit Breaker Lug Narrow Palm	70.0mm sq - 10.0mm	1	Each
NPL95-8	Circuit Breaker Lug Narrow Palm	95.0mm sq - 8.0mm	1	Each
NPL95-10	Circuit Breaker Lug Narrow Palm	95.0mm sq - 10.0mm	1	Each
NPL120-8	Circuit Breaker Lug Narrow Palm	120.0mm sq - 8.0mm	1	Each
NPL120-10	Circuit Breaker Lug Narrow Palm	120.0mm sq - 10.0mm	1	Each
NPL150-8	Circuit Breaker Lug Narrow Palm	150.0mm sq - 8.0mm	1	Each
NPL150-10	Circuit Breaker Lug Narrow Palm	150.0mm sq - 10.0mm	1	Each
NPL185-10	Circuit Breaker Lug Narrow Palm	185.0mm sq - 10.0mm	1	Each
NPL185-12	Circuit Breaker Lug Narrow Palm	185.0mm sq - 12.0mm	1	Each
NPL240-10	Circuit Breaker Lug Narrow Palm	240.0mm sq - 10.0mm	1	Each
NPL240-12	Circuit Breaker Lug Narrow Palm	240.0mm sq - 12.0mm	1	Each
NPL300-10	Circuit Breaker Lug Narrow Palm	300.0mm sq - 10.0mm	1	Each
NPL300-12	Circuit Breaker Lug Narrow Palm	300.0mm sq - 12.0mm	1	Each



Long Barrel Copper Crimp Lugs

PART NUMBER	DESCRIPTION	SIZE	PACK QTY	PRICING UNIT
LB16-6	Copper Lug Long Barrel	16.0mm sq - 6.0mm stud	1	Each
LB16-8	Copper Lug Long Barrel	16.0mm sq - 8.0mm stud	1	Each
LB25-8	Copper Lug Long Barrel	25.0mm sq - 8.0mm stud	1	Each
LB25-10	Copper Lug Long Barrel	25.0mm sq - 10.0mm stud	1	Each
LB35-8	Copper Lug Long Barrel	35.0mm sq - 8.0mm stud	1	Each
LB35-10	Copper Lug Long Barrel	35.0mm sq - 10.0mm stud	1	Each
LB35-12	Copper Lug Long Barrel	35.0mm sq - 12.0mm stud	1	Each
LB50-10	Copper Lug Long Barrel	50.0mm sq - 10.0mm stud	1	Each
LB50-12	Copper Lug Long Barrel	50.0mm sq - 12.0mm stud	1	Each
LB70-10	Copper Lug Long Barrel	70.0mm sq - 10.0mm stud	1	Each
LB70-12	Copper Lug Long Barrel	70.0mm sq - 12.0mm stud	1	Each
LB95-10	Copper Lug Long Barrel	95.0mm sq - 10.0mm stud	1	Each
LB95-12	Copper Lug Long Barrel	95.0mm sq - 12.0mm stud	1	Each
LB120-10	Copper Lug Long Barrel	120.0mm sq - 10.0mm stud	1	Each
LB120-12	Copper Lug Long Barrel	120.0mm sq - 12.0mm stud	1	Each
LB150-12	Copper Lug Long Barrel	150.0mm sq - 12.0mm stud	1	Each
LB185-12	Copper Lug Long Barrel	185.0mm sq - 12.0mm stud	1	Each
LB240-12	Copper Lug Long Barrel	240.0mm sq - 12.0mm stud	1	Each
LB300-BL	Copper Lug Long Barrel	300.0mm sq blank	1	Each
LB400-BL	Copper Lug Long Barrel	400.0mm sq blank	1	Each
LB500-BL	Copper Lug Long Barrel	500.0mm sq blank	1	Each
LB630-BL	Copper Lug Long Barrel	630.0mm sq blank	1	Each



Long Palm & Long Barrel No Hole Copper Crimp Lugs

PART NUMBER	DESCRIPTION	SIZE	PACK QTY	PRICING UNIT
LPLB16-BL	Copper Lug Long Palm Long Barrel No Hole	16.0mm	1	Each
LPLB25-BL	Copper Lug Long Palm Long Barrel No Hole	25.0mm	1	Each
LPLB35-BL	Copper Lug Long Palm Long Barrel No Hole	35.0mm	1	Each
LPLB50-BL	Copper Lug Long Palm Long Barrel No Hole	50.0mm	1	Each
LPLB70-BL	Copper Lug Long Palm Long Barrel No Hole	70.0mm	1	Each
LPLB95-BL	Copper Lug Long Palm Long Barrel No Hole	95.0mm	1	Each
LPLB120-BL	Copper Lug Long Palm Long Barrel No Hole	120.0mm	1	Each
LPLB150-BL	Copper Lug Long Palm Long Barrel No Hole	150.0mm	1	Each
LPLB185-BL	Copper Lug Long Palm Long Barrel No Hole	185.0mm	1	Each
LPLB240-BL	Copper Lug Long Palm Long Barrel No Hole	240.0mm	1	Each
LPLB300-BL	Copper Lug Long Palm Long Barrel No Hole	300.0mm	1	Each
LPLB400-BL	Copper Lug Long Palm Long Barrel No Hole	400.0mm	1	Each
LPLB500-BL	Copper Lug Long Palm Long Barrel No Hole	500.0mm	1	Each
LPLB630-BL	Copper Lug Long Palm Long Barrel No Hole	630.0mm	1	Each



Bi Metal Crimp Lugs (IEC 61238-1-2003, ASNZS 9325-1-1995 approved)

TuffStuff Bi Metal Crimp Lugs are made from the highest quality Aluminium (99.6%) and Copper (99.9%)
Operating Temp: -40°C to +100°C

PART NUMBER	DESCRIPTION	SIZE	PACK QTY	PRICING UNIT
Bi16-10	Bi Metal Copper & Aluminium Lug	16.0mm sq - 10.0mm	1	Each
Bi25-10	Bi Metal Copper & Aluminium Lug	25.0mm sq - 10.0mm	1	Each
Bi25-12	Bi Metal Copper & Aluminium Lug	25.0mm sq - 12.0mm	1	Each
Bi35-10	Bi Metal Copper & Aluminium Lug	35.0mm sq - 10.0mm	1	Each
Bi35-12	Bi Metal Copper & Aluminium Lug	35.0mm sq - 12.0mm	1	Each
Bi50-10	Bi Metal Copper & Aluminium Lug	50.0mm sq - 10.0mm	1	Each
Bi50-12	Bi Metal Copper & Aluminium Lug	50.0mm sq - 12.0mm	1	Each
Bi70-10	Bi Metal Copper & Aluminium Lug	70.0mm sq - 10.0mm	1	Each
Bi70-12	Bi Metal Copper & Aluminium Lug	70.0mm sq - 12.0mm	1	Each
Bi95-10	Bi Metal Copper & Aluminium Lug	95.0mm sq - 10.0mm	1	Each
Bi95-12	Bi Metal Copper & Aluminium Lug	95.0mm sq - 12.0mm	1	Each
Bi120-10	Bi Metal Copper & Aluminium Lug	120.0mm sq - 10.0mm	1	Each
Bi120-12	Bi Metal Copper & Aluminium Lug	120.0mm sq - 12.0mm	1	Each
Bi150-10	Bi Metal Copper & Aluminium Lug	150.0mm sq - 10.0mm	1	Each
Bi150-12	Bi Metal Copper & Aluminium Lug	150.0mm sq - 12.0mm	1	Each
Bi185-10	Bi Metal Copper & Aluminium Lug	185.0mm sq - 10.0mm	1	Each
Bi185-12	Bi Metal Copper & Aluminium Lug	185.0mm sq - 12.0mm	1	Each
Bi240-10	Bi Metal Copper & Aluminium Lug	240.0mm sq - 10.0mm	1	Each
Bi240-12	Bi Metal Copper & Aluminium Lug	240.0mm sq - 12.0mm	1	Each
Bi300-10	Bi Metal Copper & Aluminium Lug	300.0mm sq - 10.0mm	1	Each
Bi300-12	Bi Metal Copper & Aluminium Lug	300.0mm sq - 12.0mm	1	Each
Bi300-BL	Bi Metal Copper & Aluminium Lug	300.0mm sq blank	1	Each
Bi400-10	Bi Metal Copper & Aluminium Lug	400.0mm sq - 10.0mm	1	Each
Bi400-12	Bi Metal Copper & Aluminium Lug	400.0mm sq - 12.0mm	1	Each
Bi400-BL	Bi Metal Copper & Aluminium Lug	400.0mm sq blank	1	Each
Bi500-10	Bi Metal Copper & Aluminium Lug	500.0mm sq - 10.0mm	1	Each
Bi500-12	Bi Metal Copper & Aluminium Lug	500.0mm sq - 12.0mm	1	Each
Bi500-BL	Bi Metal Copper & Aluminium Lug	500.0mm sq blank	1	Each
Bi630-10	Bi Metal Copper & Aluminium Lug	630.0mm sq - 10.0mm	1	Each
Bi630-12	Bi Metal Copper & Aluminium Lug	630.0mm sq - 12.0mm	1	Each
Bi630-BL	Bi Metal Copper & Aluminium Lug	630.0mm sq blank	1	Each



Aluminium & Bi Metal reducing links and Aluminium, Copper & Bi Metal stalk lugs made to order



Copper Crimp Links

PART NUMBER	DESCRIPTION	SIZE	PACK QTY	PRICING UNIT
CLINK1.5	Crimp Type Copper Link	1.5mm	1	Each
CLINK2.5	Crimp Type Copper Link	2.5mm	1	Each
CLINK4	Crimp Type Copper Link	4.0mm	1	Each
CLINK6	Crimp Type Copper Link	6.0mm	1	Each
CLINK10	Crimp Type Copper Link	10.0mm	1	Each
CLINK16	Crimp Type Copper Link	16.0mm	1	Each
CLINK25	Crimp Type Copper Link	25.0mm	1	Each
CLINK35	Crimp Type Copper Link	35.0mm	1	Each
CLINK50	Crimp Type Copper Link	50.0mm	1	Each
CLINK70	Crimp Type Copper Link	70.0mm	1	Each
CLINK95	Crimp Type Copper Link	95.0mm	1	Each
CLINK120	Crimp Type Copper Link	120.0mm	1	Each
CLINK150	Crimp Type Copper Link	150.0mm	1	Each
CLINK185	Crimp Type Copper Link	185.0mm	1	Each
CLINK240	Crimp Type Copper Link	240.0mm	1	Each
CLINK300	Crimp Type Copper Link	300.0mm	1	Each
CLINK400	Crimp Type Copper Link	400.0mm	1	Each
CLINK500	Crimp Type Copper Link	500.0mm	1	Each
CLINK630	Crimp Type Copper Link	630.0mm	1	Each



Copper Reducing Links

PART NUMBER	DESCRIPTION	SIZE	PACK QTY	PRICING UNIT
CRL16-6	Copper Reducing Link	16.0mm - 6.0mm	1	Each
CRL16-10	Copper Reducing Link	16.0mm - 10.0mm	1	Each
CRL25-6	Copper Reducing Link	25.0mm - 6.0mm	1	Each
CRL25-10	Copper Reducing Link	25.0mm - 10.0mm	1	Each
CRL25-16	Copper Reducing Link	25.0mm - 16.0mm	1	Each
CRL35-10	Copper Reducing Link	35.0mm - 10.0mm	1	Each
CRL35-16	Copper Reducing Link	35.0mm - 16.0mm	1	Each
CRL35-25	Copper Reducing Link	35.0mm - 25.0mm	1	Each
CRL50-16	Copper Reducing Link	50.0mm - 16.0mm	1	Each
CRL50-25	Copper Reducing Link	50.0mm - 25.0mm	1	Each
CRL50-35	Copper Reducing Link	50.0mm - 35.0mm	1	Each
CRL70-16	Copper Reducing Link	70.0mm - 16.0mm	1	Each
CRL70-25	Copper Reducing Link	70.0mm - 25.0mm	1	Each
CRL70-35	Copper Reducing Link	70.0mm - 35.0mm	1	Each
CRL70-50	Copper Reducing Link	70.0mm - 50.0mm	1	Each
CRL95-35	Copper Reducing Link	95.0mm - 35.0mm	1	Each
CRL95-50	Copper Reducing Link	95.0mm - 50.0mm	1	Each
CRL95-70	Copper Reducing Link	95.0mm - 70.0mm	1	Each
CRL120-50	Copper Reducing Link	120.0mm - 50.0mm	1	Each
CRL120-70	Copper Reducing Link	120.0mm - 70.0mm	1	Each
CRL120-95	Copper Reducing Link	120.0mm - 95.0mm	1	Each
CRL150-70	Copper Reducing Link	150.0mm - 70.0mm	1	Each
CRL150-95	Copper Reducing Link	150.0mm - 95.0mm	1	Each
CRL150-120	Copper Reducing Link	150.0mm - 120.0mm	1	Each
CRL185-120	Copper Reducing Link	185.0mm - 120.0mm	1	Each
CRL185-150	Copper Reducing Link	185.0mm - 150.0mm	1	Each
CRL240-185	Copper Reducing Link	240.0mm - 185.0mm	1	Each



Aluminium Crimp Type Lug (IEC 61238-1-2003, ASNZS 4235-1-1995 approved)

PART NUMBER	DESCRIPTION	SIZE	PACK QTY	PRICING UNIT
AL6-BL	Aluminium Crimp Type Lug	6.0mm sq blank	1	Each
AL10-BL	Aluminium Crimp Type Lug	10.0mm sq blank	1	Each
AL16-BL	Aluminium Crimp Type Lug	16.0mm sq blank	1	Each
AL25-BL	Aluminium Crimp Type Lug	25.0mm sq blank	1	Each
AL35-BL	Aluminium Crimp Type Lug	35.0mm sq blank	1	Each
AL35-10	Aluminium Crimp Type Lug	35.0mm sq - 10.0mm stud	1	Each
AL50-BL	Aluminium Crimp Type Lug	50.0mm sq blank	1	Each
AL50-10	Aluminium Crimp Type Lug	50.0mm sq - 10.0mm stud	1	Each
AL70-BL	Aluminium Crimp Type Lug	70.0mm sq blank	1	Each
AL70-10	Aluminium Crimp Type Lug	70.0mm sq - 10.0mm stud	1	Each
AL95-BL	Aluminium Crimp Type Lug	95.0mm sq blank	1	Each
AL95-10	Aluminium Crimp Type Lug	95.0mm sq - 10mm stud	1	Each
AL120-BL	Aluminium Crimp Type Lug	120.0mm sq blank	1	Each
AL120-10	Aluminium Crimp Type Lug	120.0mm sq - 10.0mm stud	1	Each
AL150-BL	Aluminium Crimp Type Lug	150.0mm sq blank	1	Each
AL150-12	Aluminium Crimp Type Lug	150.0mm sq - 12.0mm stud	1	Each
AL185-BL	Aluminium Crimp Type Lug	185.0mm sq blank	1	Each
AL185-12	Aluminium Crimp Type Lug	185.0mm sq - 12.0mm stud	1	Each
AL240-BL	Aluminium Crimp Type Lug	240.0mm sq blank	1	Each
AL300-BL	Aluminium Crimp Type Lug	300.0mm sq blank	1	Each
AL400-BL	Aluminium Crimp Type Lug	400.0mm sq blank	1	Each
AL500-BL	Aluminium Crimp Type Lug	500.0mm sq blank	1	Each
AL630-BL	Aluminium Crimp Type Lug	630.0mm sq blank	1	Each



Aluminium Crimp Type Link (IEC 61238-1-2003, ASNZS 4235-1-1995 approved)

PART NUMBER	DESCRIPTION	SIZE	PACK QTY	PRICING UNIT
ALINK6	Aluminium Crimp Type Link	6.0mm	1	Each
ALINK10	Aluminium Crimp Type Link	10.0mm	1	Each
ALINK16	Aluminium Crimp Type Link	16.0mm	1	Each
ALINK25	Aluminium Crimp Type Link	25.0mm	1	Each
ALINK35	Aluminium Crimp Type Link	35.0mm	1	Each
ALINK50	Aluminium Crimp Type Link	50.0mm	1	Each
ALINK70	Aluminium Crimp Type Link	70.0mm	1	Each
ALINK95	Aluminium Crimp Type Link	95.0mm	1	Each
ALINK120	Aluminium Crimp Type Link	120.0mm	1	Each
ALINK150	Aluminium Crimp Type Link	150.0mm	1	Each
ALINK185	Aluminium Crimp Type Link	185.0mm	1	Each
ALINK240	Aluminium Crimp Type Link	240.0mm	1	Each
ALINK300	Aluminium Crimp Type Link	300.0mm	1	Each
ALINK400	Aluminium Crimp Type Link	400.0mm	1	Each
ALINK500	Aluminium Crimp Type Link	500.0mm	1	Each
ALINK630	Aluminium Crimp Type Link	630.0mm	1	Each



Boot Lace Connectors (cord ends)

Insulated

PART NUMBER	DESCRIPTION	SIZE	COLOUR	PACK QTY	PRICING UNIT
CE0.25	Insulated Cord-end	0.25mm	Violet	100	Bag
CE0.34	Insulated Cord-end	0.34mm	Pink	100	Bag
CE0.50	Insulated Cord-end	0.50mm	White	100	Bag
CE0.75	Insulated Cord-end	0.75mm	Blue	100	Bag
CE1.00	Insulated Cord-end	1.0mm	Red	100	Bag
CE1.50	Insulated Cord-end	1.5mm	Black	100	Bag
CE2.50	Insulated Cord-end	2.5mm	Grey	100	Bag
CE4.00	Insulated Cord-end	4.0mm	Orange	100	Bag
CE6.00	Insulated Cord-end	6.0mm	Green	50	Bag
CE10.0	Insulated Cord-end	10.0mm	Brown	25	Bag
CE16.0	Insulated Cord-end	16.0mm	Ivory	25	Bag
CE25.0	Insulated Cord-end	25.0mm	Black	10	Bag
CE35.0	Insulated Cord-end	35.0mm	Red	10	Bag
CE50.0	Insulated Cord-end	50.0mm	Blue	10	Bag
CE70.0	Insulated Cord-end	70.0mm	Yellow	5	Bag
CE95.0	Insulated Cord-end	95.0mm	Red	3	Bag
CE120.0	Insulated Cord-end	120.0mm	Blue	3	Bag



Twin Insulated

PART NUMBER	DESCRIPTION	SIZE	COLOUR	PACK QTY	PRICING UNIT
TCE0.75	Twin Cord-end	0.75mm	Grey	100	Bag
TCE1.00	Twin Cord-end	1.0mm	Red	100	Bag
TCE1.50	Twin Cord-end	1.5mm	Black	100	Bag
TCE2.50	Twin Cord-end	2.5mm	Blue	100	Bag
TCE4.00	Twin Cord-end	4.0mm	Grey	100	Bag
TCE6.00	Twin Cord-end	6.0mm	Yellow	50	Bag

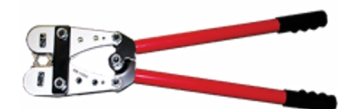


Crimpers

PART NUMBER	DESCRIPTION	SIZE	PACK QTY	PRICING UNIT
BLC2.5	Boot Lace Terminal Crimping Tool	0.5mm - 2.50mm	1	Each
BLC4.0	Boot Lace Terminal Crimping Tool	0.5mm - 4.0mm	1	Each
CL1510	Copper Lug Crimper	1.5mm - 10.0mm	1	Each
CL635	Copper Lug Crimper	6.0mm - 35.0mm	1	Each
HX10	Copper Lug Crimper Hex Style	10.0mm	1	Each
HX50	Copper Lug Crimper Hex Style	50.0mm	1	Each
HX120	Copper Lug Crimper Hex Style	120.0mm	1	Each
SOLCRIMP1	Eco Crimper MC4	2.5mm - 6.0mm	1	Each
SOLCRIMP2	Premium Crimper MC4	2.5mm - 6.0mm	1	Each



HX10, BLC2.5, BLC4.0, CL1510, CL635



HX50, HX120

Staubli MC4 Connectors

PART NUMBER	DESCRIPTION	SIZE	PACK QTY	PRICING UNIT
MC4-MF1000S	1000V Male & Female Genuine Pair	2.5mm - 4.0mm	1 Pair	Pair
MC4-MF1500S	1500V Male & Female Genuine Pair	4.0mm - 6.0mm	1 Pair	Pair



MC4 Connectors

PART NUMBER	DESCRIPTION	SIZE	PACK QTY	PRICING UNIT
MC4-MF1000	1000V Male & Female Pair	2.5mm - 4.0mm	10 Pair	Pair
MC4-MF1500	1500V Male & Female Pair	4.0mm - 6.0mm	10 Pair	Pair
MC4-B-1000	1000V 2 Way Branch Connector	2.5mm - 4.0mm	1 Pair	Pair
MC4-B-1500	1500V 2 Way Branch Connector	4.0mm - 6.0mm	1 Pair	Pair
SOLSPAN1	Spanner for MC4 1000V	N/A	1	Each
SOLSPAN2	Spanner for MC4 1500V	N/A	1	Each





UNDERGROUND CABLE PROTECTION / TAPES / WARNING TAPES

Underground Electrical Warning Tape
Underground Communication Warning Tape
Detectable Underground Warning Tape
Underground Hard Cable Cover
Warning & Danger Tapes
Safety Bunting Flags
PVC Electricians Tape
PVC Duct Tape
Solar DC Warning Tape
Temporary Construction Tape

DANGER
ELECTRICAL CABLE
AS2648
Manufactured to AS2648

COMMUNICATION

Underground Electrical Warning Tape (AS/NZS 2648 & 4275 Approved)

PART NUMBER	DESCRIPTION	SIZE	PACK QTY	PRICING UNIT
UGWTO-100m	Electrical Underground Warning Tape	150.0mm x 100m	Roll	Each
UGWTO-500m	Electrical Underground Warning Tape	150.0mm x 500m	Roll	Each



Underground Comms Warning Tape (AS/NZS 2648 & 4275 Approved)

PART NUMBER	DESCRIPTION	SIZE	PACK QTY	PRICING UNIT
UGWTW-100m	Communication Underground Warning Tape	150.0mm x 100m	Roll	Each
UGWTW-500m	Communication Underground Warning Tape	150.0mm x 500m	Roll	Each



Detectable Underground Warning Tape (AS/NZS 2648 & 4275 Approved)

TuffStuff Detectable Warning Tape contains Stainless Steel wire for easy and long lasting detection

PART NUMBER	DESCRIPTION	SIZE	PACK QTY	PRICING UNIT
DUGWT0-250	Detectable Electrical Underground Warning Tape	100.0mm x 250m	Roll	Each
DUGWTW-250	Detectable Communication Underground Warning Tape	100.0mm x 250m	Roll	Each



Underground Hard Cable Cover (AS/NZS 4702 Approved)

TuffStuff Underground Hard Cable Cover is highly resistant to chemicals
 Made from Lead free material
 Supplied with rounded edges

PART NUMBER	DESCRIPTION	SIZE	PACK QTY	PRICING UNIT
UCC150	Underground Cable Cover	150.0mm x 25m	Roll	Each
UCC200	Underground Cable Cover	200.0mm x 25m	Roll	Each
UCC300	Underground Cable Cover	300.0mm x 25m	Roll	Each



Warning & Danger Tapes

PART NUMBER	DESCRIPTION	SIZE	PACK QTY	PRICING UNIT
DTR/W	Red & White Stripe Tape	75.0mm x 50m	Roll	Each
DTR/WDAN	"DANGER" Red & White Stripe Tape	75.0mm x 50m	Roll	Each
DTR/WDNE	"DANGER DO NOT ENTER" Red & White Stripe Tape	75.0mm x 50m	Roll	Each
DTY/BDAN	Yellow & Black Stripe Tape	75.0mm x 50m	Roll	Each
DTYCAU	"CAUTION" Yellow Tape	75.0mm x 50m	Roll	Each



Safety Bunting Flags

TuffStuff Danger Bunting Flags are tough, durable and ideal for early warning

PART NUMBER	DESCRIPTION	SIZE	PACK QTY	PRICING UNIT
SF1	Orange Safety/Danger Flags	N/A	30m	Roll



PVC Electricians Tape

PART NUMBER	DESCRIPTION	SIZE	COLOUR	PACK QTY	PRICING UNIT
INSRB	PVC Insulation Tape	18mm x 20m	Rainbow	10	Roll
INSBK	PVC Insulation Tape	18mm x 20m	Black	10	Roll
INSBL	PVC Insulation Tape	18mm x 20m	Blue	10	Roll
INSRD	PVC Insulation Tape	18mm x 20m	Red	10	Roll
INSWH	PVC Insulation Tape	18mm x 20m	White	10	Roll
INSY/GN	PVC Insulation Tape	18mm x 20m	Yellow/Green	10	Roll
INSOR	PVC Insulation Tape	18mm x 20m	Orange	10	Roll



PVC Duct Tape

PART NUMBER	DESCRIPTION	SIZE	COLOUR	PACK QTY	PRICING UNIT
GDT50	Grey Duct Tape	48.0mm x 30m	Grey	1	Each



Solar DC Warning Tape

PART NUMBER	DESCRIPTION	SIZE	PACK QTY	PRICING UNIT
DCW	DC Warning Tape - Red	45.0mm x 50m	8	Each



Temporary Construction Tape

PART NUMBER	DESCRIPTION	SIZE	PACK QTY	PRICING UNIT
CTCW1	CAUTION Temporary Construction Tape	37.0mm x 75m	8	Roll



ELECTRICAL ACCESSORIES / SILICONE

Pull Line Rope
Telstra Rope
Catenary Wire
Catenary Wire Accessories
- Thimbles
- Wire Rope Grips
- D Shackles
- Turnbuckles
Cable Lube
Silicones / Firestop
Liquid Adhesive (Nail-IT)
Expandable Gap Fillers
Dektites
Fish Rods / Yellow Tongue
SS Solar Clips
Disposable Face Masks
Jack Chain
Extreme Magnets

Pull Line Rope

TuffStuff Pull Line Rope is tested and approved for 80kg App Break Force

PART NUMBER	DESCRIPTION	SIZE	COLOUR	PACK QTY	PRICING UNIT
JL1K	Orange Pull Line Rope	3.0mm x 1000m	Orange	1000m	Coil



Telstra Rope

TuffStuff Telstra Rope is tested and approved for 720kg App Break Force
UV Stabilised, anti-rot and mildew resistant
Heavy Duty 7.1kg roll, tangle free

PART NUMBER	DESCRIPTION	SIZE	COLOUR	PACK QTY	PRICING UNIT
TELROPE	6mm Blue/Yellow 3 Strand Tangle Free	6.0mm x 400m	Blue/Yellow	400m	Coil



Catenary Wire

PART NUMBER	DESCRIPTION	SIZE	PACK QTY	PRICING UNIT
CW7/090D	Galvanised Catenary Wire	7/0.90 x 180m	180m	Drum
CW7/125D	Galvanised Catenary Wire	7/1.25 x 100m	100m	Drum



Thimbles

PART NUMBER	DESCRIPTION	SIZE	PACK QTY	PRICING UNIT
THIM06	Thimble	6.0mm	10	Bag
THIM08	Thimble	8.0mm	10	Bag



Wire Rope Grips

PART NUMBER	DESCRIPTION	SIZE	PACK QTY	PRICING UNIT
WRG06	Wire Rope Grip	6.0mm	10	Bag
WRG08	Wire Rope Grip	8.0mm	10	Bag



D Shackles

PART NUMBER	DESCRIPTION	SIZE	PACK QTY	PRICING UNIT
DS06	D Shackles	6.0mm	10	Bag
DS08	D Shackles	8.0mm	10	Bag



Turnbuckles

PART NUMBER	DESCRIPTION	SIZE	PACK QTY	PRICING UNIT
TB06	Turnbuckle Hook & Eye	6.0mm	10	Bag
TB08	Turnbuckle Hook & Eye	8.0mm	10	Bag



Cable Lube

PART NUMBER	DESCRIPTION	SIZE	PACK QTY	PRICING UNIT
LUBE1	Cable Lube	1L	1	Tube
LUBE20	Cable Lube	20L	1	Bucket



Silicones / Firestop

PART NUMBER	DESCRIPTION	SIZE	COLOUR	PACK QTY	PRICING UNIT
PROTECT-IT	Fire Retardant Acrylic Sealant	300ml	White	24	Tube
GAP-IT	General Purpose GAP Filler Acrylic Sealant	300ml	White	24	Tube
SEAL-IT	Roof & Gutter Silicone	300ml	Clear	24	Tube
DEFEND-IT	Fire Retardant Silicone	300ml	White	24	Tube



Liquid Adhesive (Nail-IT)

PART NUMBER	DESCRIPTION	SIZE	COLOUR	PACK QTY	PRICING UNIT
NAIL-IT	General Purpose Adhesive without using Nails	300ml	Beige	1	Tube



Expandable Gap Fillers (with purpose straw + gun attachment)

PART NUMBER	DESCRIPTION	SIZE	COLOUR	PACK QTY	PRICING UNIT
FILL-IT	Expandable Foam	650ml	White	1	Can
FS-FILL-IT	Fire Stop Expandable Foam	750ml	White	1	Can



Dektites

PART NUMBER	DESCRIPTION	BASE SIZE	SIZE	PACK QTY	PRICING UNIT
D35	Roof Flashing EPDM & Aluminium Flashing	100mm x 100mm	0mm - 35mm	1	Each
DS35	Roof Flashing EPDM & Aluminium Base	100mm x 100mm x	0mm - 49mm	1	Each
DA35L	Roof Flashing EPDM + Lead Zinc Sheet + Butyl Tape	450mm x 280mm	0mm - 35mm	1	Each
DA55	Roof Flashing EPDM & Aluminium Flashing	135mm x 135mm x	5mm - 55mm	1	Each



DA35



DS35



DA35L



D55

Fish Rods / Yellow Tongue

PART NUMBER	DESCRIPTION	SIZE	PACK QTY	PRICING UNIT
YT-1	Yellow Tongue	14.5mm x 4m	1	Pack
FR10	Fibreglass Extendable Fish Rod	5.0mm x 10m	1	Tube
FR20	Fibreglass Fish Rod	4.0mm x 20m	1	Pack
FR30	Fibreglass Fish Rod	4.0mm x 30m	1	Pack
FR30HD	Fibreglass Twist Fish Rod with Holder	6.0mm x 30m	1	Pack



SS Solar Clips

PART NUMBER	DESCRIPTION	SIZE	PACK QTY	PRICING UNIT
SOLCLIP	SS Solar Clip	10.0mm width	100	Bag
SOLCLIP-1	SS Solar Clip	18.0mm width	100	Bag



Disposable Face Masks

PART NUMBER	DESCRIPTION	SIZE	PACK QTY	PRICING UNIT
FM-1	KN95 Disposable Face Mask	One size fits all	5	Bag



Jack Chain

PART NUMBER	DESCRIPTION	SIZE	PACK QTY	PRICING UNIT
JACK2.5	Jack Chain	2.5mm	25m	Bucket



Extreme Magnets

PART NUMBER	DESCRIPTION	COLOUR	PACK QTY	PRICING UNIT
MAG101	Insulated Extreme Magnet with Hook	Red	1	Each



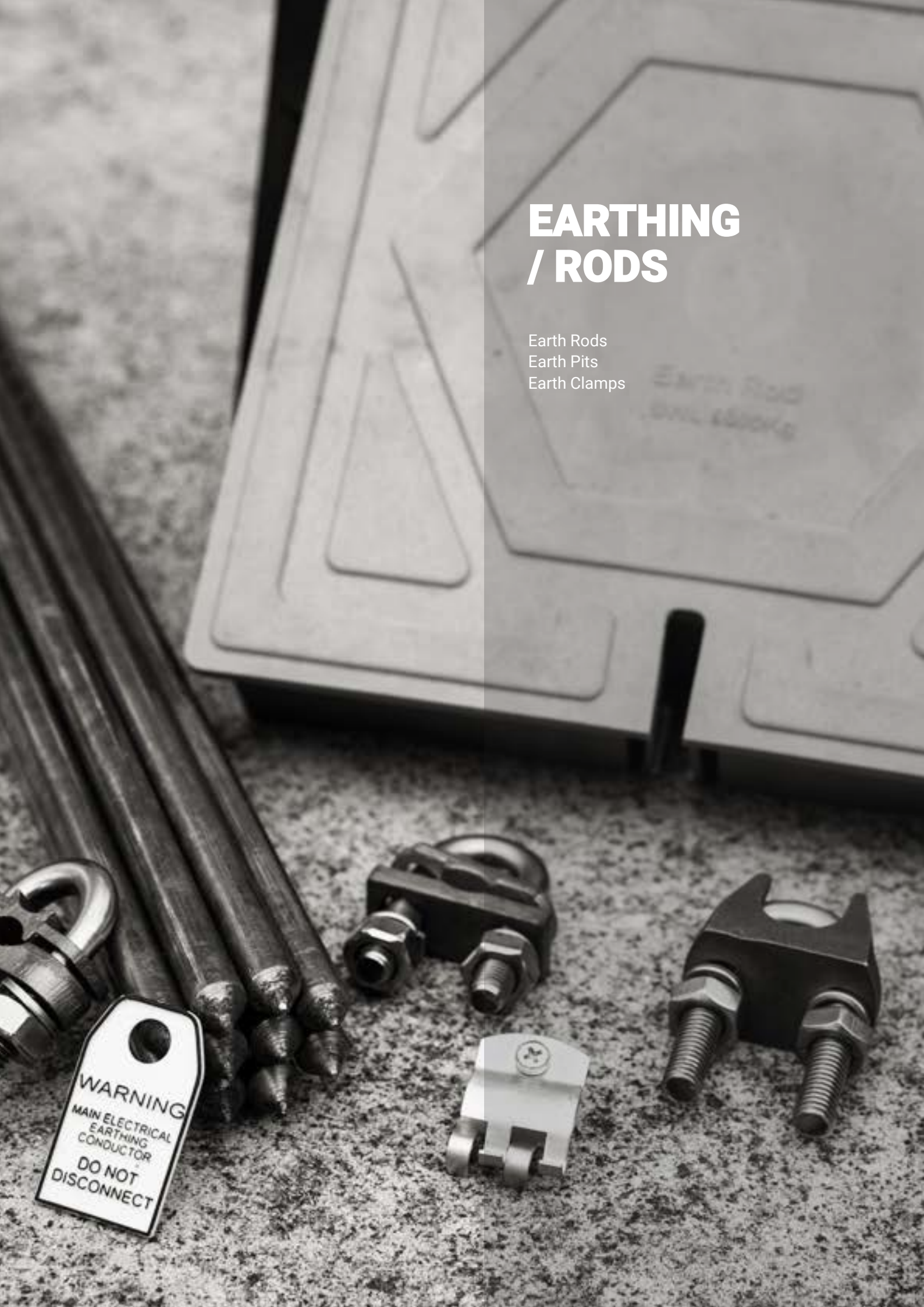


**Supplying the Australian electrical
& construction industries with quality
trade solutions at competitive prices.**

EARTHING / RODS

Earth Rods
Earth Pits
Earth Clamps

WARNING
MAIN ELECTRICAL
EARTHING
CONDUCTOR
DO NOT
DISCONNECT



Earth Rods (Compliant to UL 467 & BS 6651)

TuffStuff Earth Rods are supplied with clip and tag in a protective and handy carry bag

PART NUMBER	DESCRIPTION	SIZE	PACK QTY	PRICING UNIT
ER1440	Earth Rod with Tag & Clip	13.0mm x 1440mm	10	Each
ER1800	Earth Rod with Tag & Clip	13.0mm x 1800mm	10	Each
ER191800	Earth Rod	19.0mm x 1650mm	1	Each



Earth Pits

TuffStuff Square Poly Earth Pits are manufactured from high grade Polypropylene for extra strength Strong resistance against corrosion, stress level & load resistance 5000kg Lockable

PART NUMBER	DESCRIPTION	Size	PACK QTY	PRICING UNIT
PIT-0	Square Polypropylene Earth Pit	308mm x 308mm x 214mm	1	Each



Earth Clamps

TuffStuff Earth Clamps are manufactured from Copper Alloy with a Gunmetal Plate Strong resistance against corrosion

PART NUMBER	DESCRIPTION	SIZE	PACK QTY	PRICING UNIT
ERTAG	Tag	N/A	10	Each
EC13	13mm Earth Clip	13.0mm	10	Each
EC10	10mm Rod to Clamp Earth Clamp	10.0mm	1	Each
EC16	Earth U BOLT Rod to Cable Clamp	16.0mm	1	Each
EC19	Earth U BOLT Rod Clamp	19.0mm	1	Each



ERTAG



EC13



EC10



EC16



EC19

Have a bulk order?

Then save money by speaking to one of our sales reps about indent ordering.

tuffstufftradesolutions.com.au

