

PSA Centrii

CENPTCAM

Indoor PT Cam (Pan & Tilt)



Features

- **True 2K Clarity**
Shows crystal clear and smooth live video with 50% clearer image than 1080p
- **Complete 360° View**
Easily and quickly check the places you want to see
- **Hassle-Free Connection**
Dual band 2.4GHz/5.0GHz makes connection easy
- **One-Touch Calls**
Real-time talk with anytime
- **Smart Motion Tracking**
Human & pet tracking, see exactly what is happening
- **Infrared Night Vision**
8 separated infrared LEDs provide clear and bright images. Invisible 940nm infrared LEDs are conducive to sleeping babies.
- **Privacy Mode**
Camera lens can be covered completely if needed

Specifications

AI Feature	Human Detection, Motion Detection, Human Tracking
Resolution and FPS	3MP, 2304*1296, 25FPS
Power Supply	Wired 5V 1A
WiFi Band	2.4GHz, 5GHz
FOV	105°*90°*50°
Installation Height	No limitation
Night Vision Mode	IR
IR distance	7m
WiFi Signal Range	Open Space 240m
2-Way Communication Distance	6m
Weatherproof Rating	Indoor only
Working Temperature	-20 - 55°C
Charge Port	Type-C
Adapter	5V/1A&2A
Storage	Micro SD Card Storage + Cloud Storage (subscription)
Recording Mode	24hr Recording, Event Recording
Event Types	Click call, Human Body Alarm, Motion Alarm
Storage - microSD card type	FAT32, exFAT up to 128GB
Alexa & Google Assistant	Support
Audio & Video recording	Support
PT	Support

Specifications may change without notice



PSA Centrii App

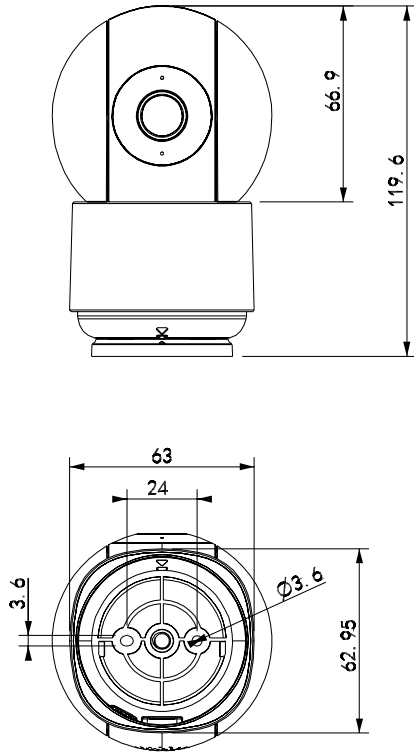
Free app provided, support remote viewing on iOS or Android



CENPTCAM

Indoor PT Cam (Pan & Tilt)

Dimensions (mm)



Item Code	CENPTCAM
Description	Indoor PT Cam (Pan & Tilt)
Carton Qty	1
Barcode	9318475002360

PSA LifeSaver

LIFPE10LP

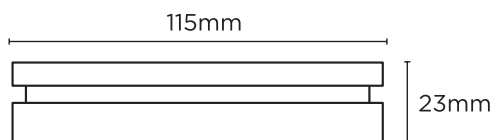
Low Profile
10 Year Sealed Battery



Features

- Award-winning low profile design
- Measures at 115mm x 23mm
- Surface mount installation
- Powered by 10 year lithium battery (non-replaceable)
- Photoelectric sensing technology
- Easy power on / power off mounting bracket
- Bug screen sensor chamber protection
- Large and simple to use Test & Hush button
- Hush mode to desensitise the alarm for 10 min
- Loud 85dBA alarm at 3 metres
- Tamper resistant feature
- LED status indicator
- 5 year warranty
- Complies to the Australian Standard AS3786:2014.

Dimensions



Australian Standard
AS3786:2014
Lic:SMK1377
SAI Global



**5 Year
Warranty**

Specifications

Model	PE10LP
Part Number	LIFPE10LP
Sensor Type	Photoelectric
Smoke Alarm Power	10 year 3VDC CR123A fixed battery (non-replaceable)
Alarm Volume	85dBA at 3 metres
Alarm Signal Pattern	ISO8201 (BI 0.5s -pause 0.5s -BI 0.5s -pause 0.5s -BI 0.5s -pause 1.5s, with the RED LED flashing, repeat this alarm pattern)
Temperature Range	0°C - 40°C
Humidity Range	Up to 93% RH (non-condensing)
Hush Function	Silences alarm for 5 to 15 minutes The red LED flashes every 8 seconds Dense smoke will override hush function
Alarm Duration	Alarm will sound for as long as smoke is detected, then unit will automatically reset when smoke clears.
Alarm Indication	Red LED flashes every second.
Indicator LEDs	Red LED - Alarm status indicator, differentiated by frequency of flashes.
Low Battery	Red LED flash once every 40 seconds.
Chamber fault	Red LED flash once every 40 seconds
Buzzer fault	Red LED flash twice every 40 seconds.
Approvals	AS3786:2014
Warranty	5 years

*Refer to Installation and User Manual for further information and programming.

Item Code	Single	Pack	Carton
Quantity	1	200	60
Barcode	9318475001868	19318475001865	29318475001862

LIFPE10LP Datasheet V2.00, Document 014. Published 16/07/2024 - Specifications may change without notice.