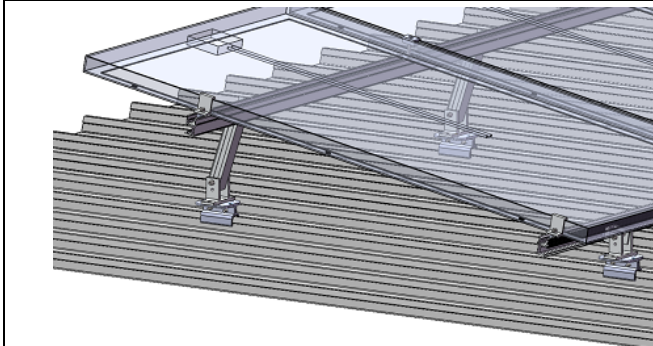
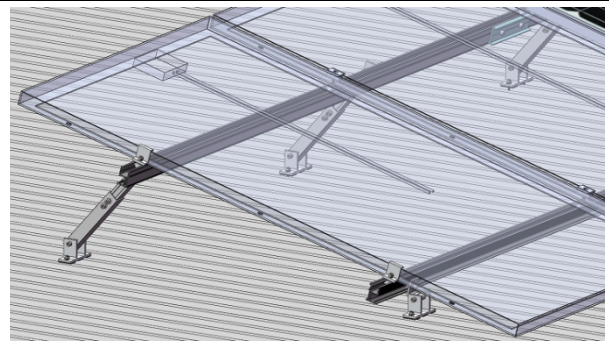


SolarRoof, Adjustable Tilt Legs, preassembly

Assembly

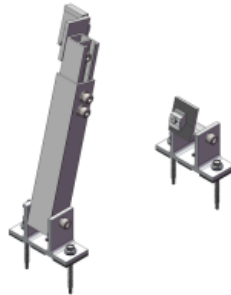


Install with Klip-lok Interface



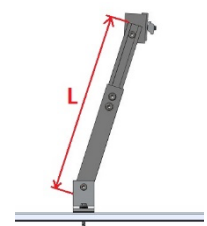
Install on tin roof directly

Component



Adjustable Tilt Legs, preassembly
Part No.: ER-TL-10/15/PS, ER-TL-15/30/PS

Technical Specification

Screw Specification	4 x Buildex 14-11 x 70 (14 gauge, 6.3 mm, 11 TPI, 70 mm long) Hex Head Zips screw	 <p>Adjustable range for Rear Leg: ER-TL-10/15: 260-375 mm; ER-TL-15/30: 390-635 mm;</p>
Weight	ER-TL/10/15, 1.056kg ER-TL/15/30, 1.277 kg	
Packaging	ER-TL-10/15/PS, 14 units per carton ER-TL-15/30/PS, 14 units per carton	
Material	Tilt Legs: AL6005-T5; Fasteners: SUS304	
Color	Silver (half-anodized no less than 10 μm)	
Earthing	Yes	