

KWH METER - DIN RAIL MOUNT



SINGLE PHASE - NMI APPROVED

**SOLAR
COMPATIBLE**

FEATURES & BENEFITS

- Slimline design
- NMI approved for billing applications
- Digital LCD display
- Tamper seal kit supplied
- 1 year warranty
- Suitable for solar applications.

SPECIFICATIONS

Materials:

- Housing - Fire resistant ABS

Weatherproof rating:

- IP51

Display:

- Backlit blue LCD

Accuracy class:

- Class 1

Insulation class:

- Class 2

Maximum rated current:

- 100 Amp

Operational current range:

- 0.25 - 100 Amp

Over current withstand:

- 1000 Amp for 0.1s

Nominal voltage:

- 230 Vac

Operating frequency:

- 50 - 60 Hz

Maximum cable capacity:

- 25mm² (neutral 2.5mm²)

Operating temperature:

- -20°C to 65°C

Test output flash rate:

- 1000 impulses per kWh

Power supply indicator:

- Mains power ON

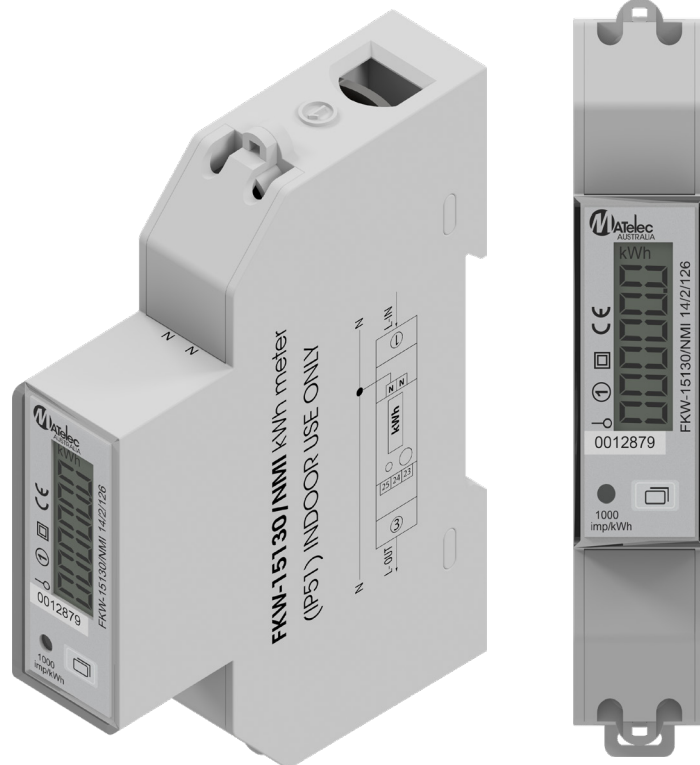
Consumption indicator:

- Flashing on load

Dimensions:

- 90mm (H) x 18mm (W)
x 72mm (D) 1 Module

Report/Certification Number	Date Issued
National Measurement Institute CoA NMI 14/2/126	27/08/2024
NMI M 6-1 Electricity Meters Part 1: Metrological and technical requirements Ref PA-2023/093	26/03/2024
SGS-CSTC Standards Technical Services (Shanghai) Co. Ltd. test report reference no. SHES231202383101 (NMI M 6-1)	06/02/2024



Code	Description	Packing	MOQ	Ctn
FKW-15130/NMI	KWH Meter - Single Phase Din Rail Mount - NMI Approved - Solar Compatible	1	1	90