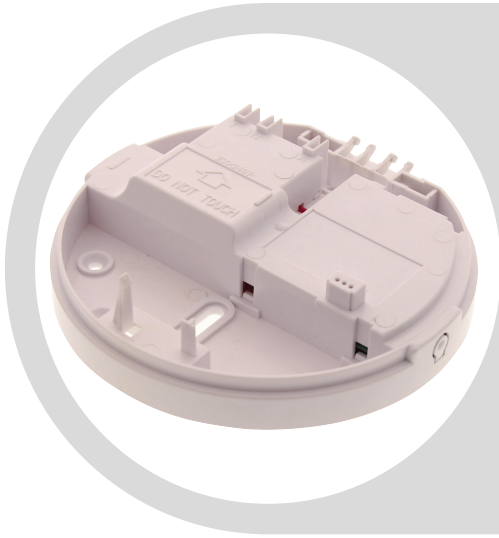




# SMOKE ALARMS

## Data Sheet



### R240ACB

Isolator Base for Main Powered Smoke Alarm  
For use with R240, R240RC & RAC240

#### Key Information

Product brand	Red Smoke Alarms
Product or component	Isolator Base
Device application	Mounting
Colour	White (RAL 9003)
Quantity per set	Set of 1
Type of packing	Carton

#### Complementary

[US] rated supply voltage	220...240 V ac, 50 Hz
Number of devices	40pcs smoke alarm
Operating distance	150meters
Connection Type	Hard-wire interconnect
Compatible	Red Smoke Model R240 Red Smoke Model R240RC
Feature	Isolator feature to connect to Red Smoke Alarm Controller - Model RAC240
Connections - Terminals	For live: Screw terminal with 2 x 1.5mm <sup>2</sup> wiring capacity For neutral: Screw terminal with 2 x 1.5 mm <sup>2</sup> wiring capacity For switch: Screw terminal with 2 x 1.5mm <sup>2</sup> wiring capacity For interconnect: Screw terminal with 2 x 1.5mm <sup>2</sup> wiring capacity
Type of installation	Indoor
Diameter	140 mm
Height	55 mm

#### Environment

Ambient air temperature for operation	0° - 45°C
Relative humidity	5% - 95%

#### Offer Sustainability

Sustainable offer status	Not a Green Premium Product
--------------------------	-----------------------------

The information provided in this documentation contains general descriptions and/or technical characteristics of the performance of the products contained herein. This documentation is not intended as a substitute for and is not to be used for determining suitability or reliability of these products for specific user applications. It is the duty of any such user or integrator to perform the appropriate and complete risk analysis, evaluation and testing of the products with respect to the relevant specific application or use thereof.

Neither Red Smoke Alarms PTY. LTD nor any of its affiliates or subsidiaries shall be responsible or liable for misuse of the information contained herein.



# SMOKE ALARMS

Data Sheet  
R240ACB

The information provided in this documentation contains general descriptions and/or technical characteristics of the performance of the products contained herein. This documentation is not intended as a substitute for and is not to be used for determining suitability of reliability of these products for specific user applications. It is the duty of any such user or integrator to perform the appropriate and complete risk analysis, evaluation and testing of the products with respect to the relevant specific application or use thereof.

Neither Red Smoke Alarms PTY. LTD nor any of its affiliates or subsidiaries shall be responsible or liable for misuse of the information contained herein.