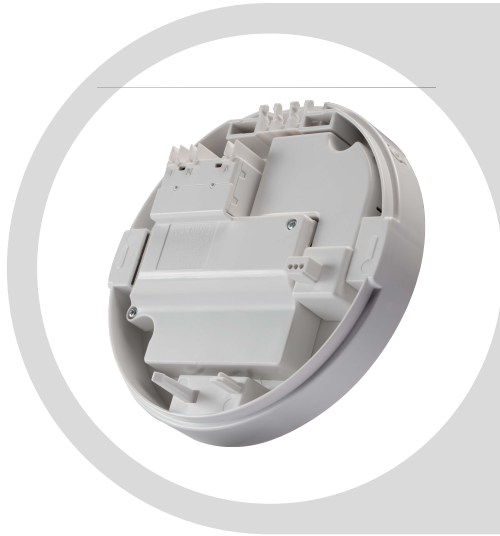




SMOKE ALARMS

Data Sheet



RWB2

Mounting Base for Main Powered Smoke Alarm - Wireless Interconnect
For use with R240 & R240RC

Key Information

Product brand	Red Smoke Alarms
Product or component	Mounting Base
Device application	Mounting
Colour	White (RAL 9003)
Quantity per set	Set of 1
Type of packing	Carton

Complementary

Main Power Source	220...240 V AC, 50Hz
Operating Current	≤ 40mA
Backup Battery Type	Non-replaceable 3V Lithium Battery
Battery Life	10 Year
Transmission Frequency	433.92 MHz
Number of Device	Wired/Wireless interconnect up to 40 alarms
Operating Distance	30m indoor use line of sight 100m in free field
Remote Control	Red wireless remote control (RAC) Max 30m
Pairing Duration	2.5 mins
Connections - Terminals	For live: Screw terminal with 2 x 1.5 mm ² wiring capacity For neutral: Screw terminal with 2 x 1.5 mm ² wiring capacity For earth loop: Screw terminal with 2 x 1.5mm ² wiring capacity For interconnect: Screw terminal with 2 x 1.5mm ² wiring capacity
Visual Indicators	Red LED for pairing, warning and low battery
Type of Installation	Indoor
Diameter	140 mm
Knockouts	Two side knockouts for conduit surface mount One internal knockout for ceiling mount

Environment

Ambient Air Temperature for Operation	0...45°C
Relative Humidity	5...95%
Standards	AS 4268, AS/NZS CISPR32:2015

The information provided in this documentation contains general descriptions and/or technical characteristics of the performance of the products contained herein. This documentation is not intended as a substitute for and is not to be used for determining suitability or reliability of these products for specific user applications. It is the duty of any such user or integrator to perform the appropriate and complete risk analysis, evaluation and testing of the products with respect to the relevant specific application or use thereof.

Neither Red Smoke Alarms PTY. LTD nor any of its affiliates or subsidiaries shall be responsible or liable for misuse of the information contained herein.



SMOKE ALARMS

Data Sheet
RWB2

The information provided in this documentation contains general descriptions and/or technical characteristics of the performance of the products contained herein. This documentation is not intended as a substitute for and is not to be used for determining suitability of reliability of these products for specific user applications. It is the duty of any such user or integrator to perform the appropriate and complete risk analysis, evaluation and testing of the products with respect to the relevant specific application or use thereof.

Neither Red Smoke Alarms PTY. LTD nor any of its affiliates or subsidiaries shall be responsible or liable for misuse of the information contained herein.