



STARPAD SE7071TC - 15/100W

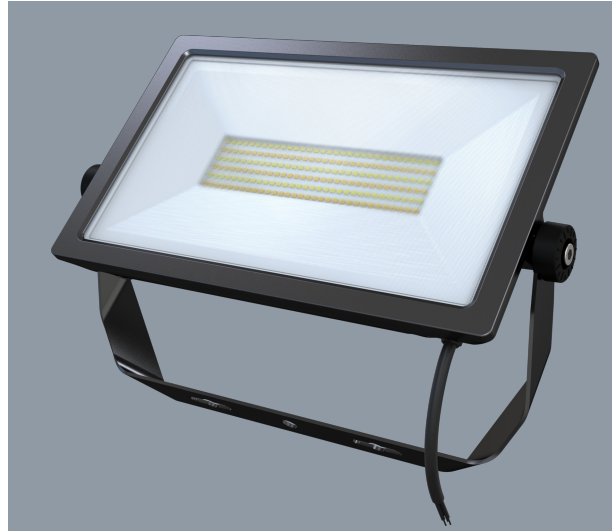
15-100 watt IP65 LED floodlight with integral selectable colour temperature

Application





A versatile floodlight solution for residential and commercial exterior spaces

Design Specifications

- Robust die-cast aluminium body, IK 07 rated
- Durable black, silver or white powder coated finish
- Textured tempered glass front cover
- High efficiency SMD LED chips, non-dimmable LED driver, CRI > 80, CCT selectable 3000, 4000 or 5000K
- High performance aluminium reflector, beam distribution 100 degree
- Nickel plated copper cable gland with 600 mm 3 core rubber flex (15-30 watt models), 800mm for (50-100 watt models)



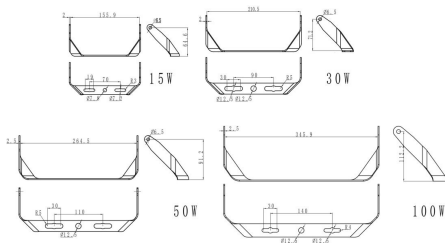
Technical Specification

Product	Model No.	Input Voltage (V/AC)	Power (W)	Lumens (lm)	CCT (K)	CRI
	SE7071/15TC/WH	240	15	1300/1500/1350	3000/4000/5000	80
	SE7071/15TC/SL	240	15	1300/1500/1350	3000/4000/5000	80
	SE7071/15TC/BK	240	15	1300/1500/1350	3000/4000/5000	80
	SE7071/30TC/WH	240	30	2550/3000/2700	3000/4000/5000	80
	SE7071/30TC/SL	240	30	2550/3000/2700	3000/4000/5000	80
	SE7071/30TC/BK	240	30	2550/3000/2700	3000/4000/5000	80
	SE7071/50TC/WH	240	50	4250/5000/4500	3000/4000/5000	80
	SE7071/50TC/SL	240	50	4250/5000/4500	3000/4000/5000	80
	SE7071/50TC/BK	240	50	4250/5000/4500	3000/4000/5000	80
	SE7071/100TC/WH	240	100	8500/10000/9000	3000/4000/5000	80
	SE7071/100TC/SL	240	100	8500/10000/9000	3000/4000/5000	80
	SE7071/100TC/BK	240	100	8500/10000/9000	3000/4000/5000	80

Beam Angle (°)	Body Colour	Dim (mm)	Mass (kg)
100	WHITE	153(L) x 153(W) x 33(H)	0.6
100	SILVER	153(L) x 153(W) x 33(H)	0.6
100	BLACK	153(L) x 153(W) x 33(H)	0.6
100	WHITE	204(L) x 36(W) x 207(H)	1
100	SILVER	204(L) x 36(W) x 207(H)	1
100	BLACK	204(L) x 36(W) x 207(H)	1
100	WHITE	246(L) x 261(W) x 39(H)	1.5
100	SILVER	246(L) x 39(W) x 261(H)	1.5
100	BLACK	246(L) x 39(W) x 261(H)	1.5
100	WHITE	290(L) x 40(W) x 342(H)	2.6
100	SILVER	290(L) x 40(W) x 342(H)	2.6
100	BLACK	290(L) x 40(W) x 342(H)	2.6

Due to continued product and technology enhancements, data sourced from sal.net.au shall not form part of any contract and or technical performance guarantee unless expressly confirmed in writing by SAL at the time of order. Products are sold in accordance with SAL Terms and Conditions of sale and all images shown are for illustration purposes only and may vary from the actual colour or finish. Unless specifically stated, all IP ratings nominated for Interior products are from "below the ceiling".

Dimensions



Photometric Data

Unit: cd C0/C180 — C90/C270

SE7171/15TC/WH at 3000K SE7171/100TC/WH at 3000K

