

TPTUFF600



## Toughnut Batten

### Product Range

Cat No.	Configuration
TPTUFF600	Toughnut Batten, 600mm

### 1 Package contents

- A Toughnut Batten, 600mm
- B Accessories
- C Installation guide

### 2 Dimensions

### 3 Wiring diagram

Brown: Line/Active  
Blue: Neutral  
Green/Yellow: Earth

### 4 Mounting and installation

#### ⚠️ DANGER

#### HAZARD OF ELECTRIC SHOCK

- This product must be installed and serviced by appropriately qualified and/or licenced electrical personnel.
- Isolate the electrical supply before doing any work on this product.
- Ensure that the product has been correctly installed and tested for safe operation before reconnecting the electrical supply.
- To comply with all safety standards, the product must be used only for the purpose described in this instruction and must be installed in accordance with the wiring rules and regulations in the location where it is installed.

**Failure to follow these instructions will result in death or serious injury.**

#### ⚠️ CAUTION

#### RISK OF EQUIPMENT DAMAGE

The light source contained in this luminaire shall only be replaced by the manufacturer or a service agent or a similar qualified person.

**Failure to follow these instructions can result in minor injuries or equipment damage.**

#### ⚠️ CAUTION

#### RISK OF BURN INJURIES

During and after use, the product may be hot. Do not touch the product before it has completely cooled down.

**Failure to follow these instructions can result in minor injuries or equipment damage.**

### Installation requirements

- Check whether the product has been damaged during transport. Do not operate/install any product which appears damaged in any way. Return the complete batten to place of purchase for inspection, repair or replacement.
- Take care not to pull any electrical wires during unpacking, as this may damage the connection.
- Isolate the electrical supply before commencing any installation.
- There are no user serviceable parts inside.

#### a. Pre-Installation

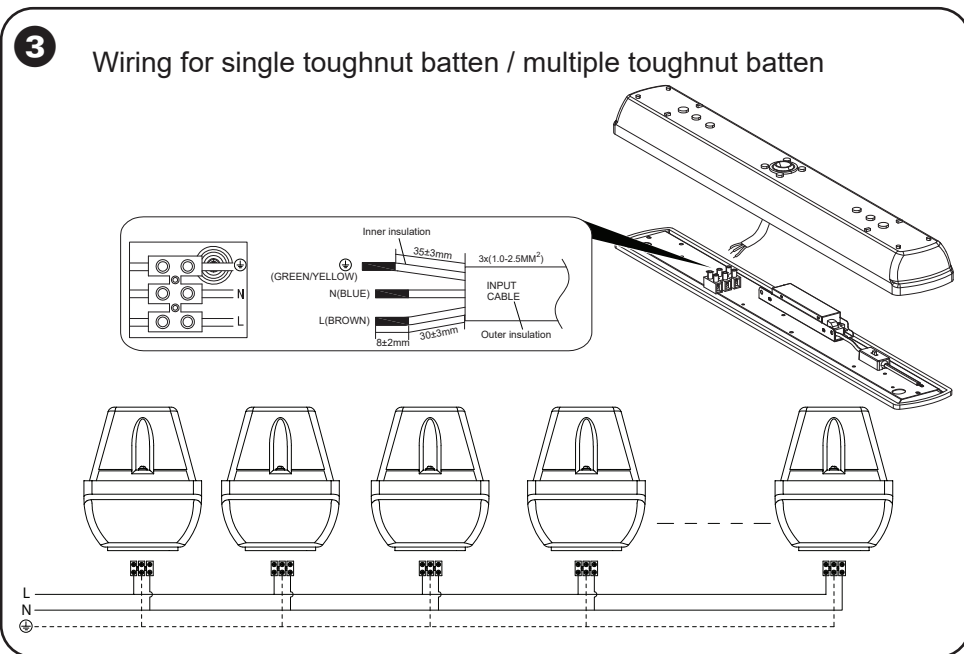
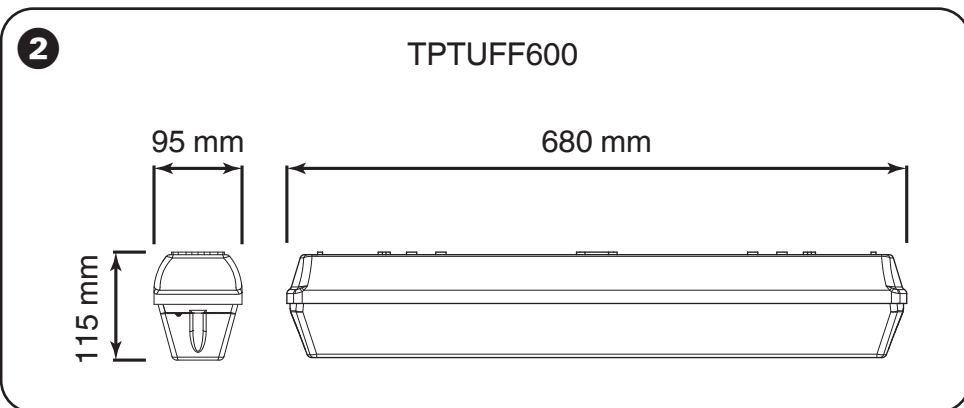
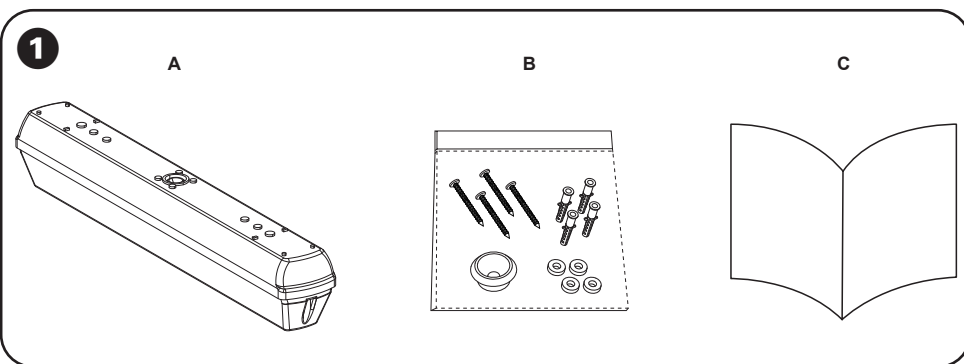
##### Colour Temperature Selector

This toughnut batten has a Tri-Temp colour selector switch, allowing the option of three different light temperature outputs. Select the desired position prior to installation. The switch is located on the bottom side of the batten assembly.

#### b. Surface Mounted Installation Instruction

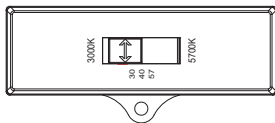
**NOTE:** Make sure colour temperature is selected prior to installation.

- (1) Disconnect the mains supply before installation or removing cover.
- (2) Select desired location to mount the LED toughnut batten. Measure and mount to the desired surface.



4

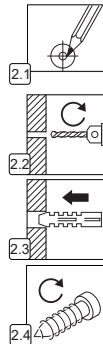
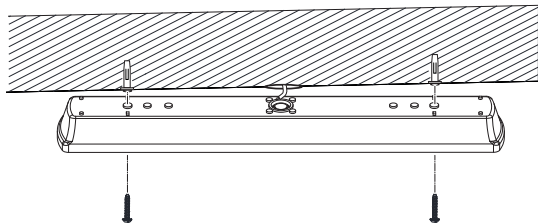
a.



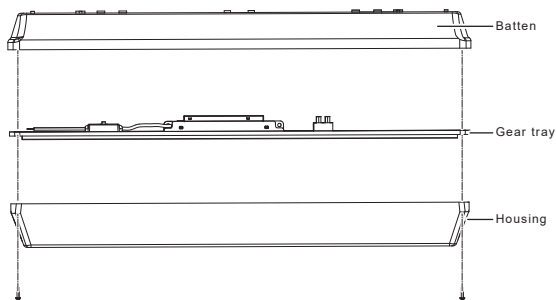
3000K	4000K	5700K
Warm White	Cool White	Daylight

b.

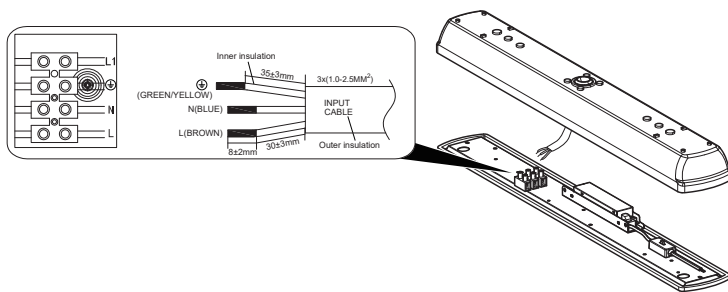
(2)



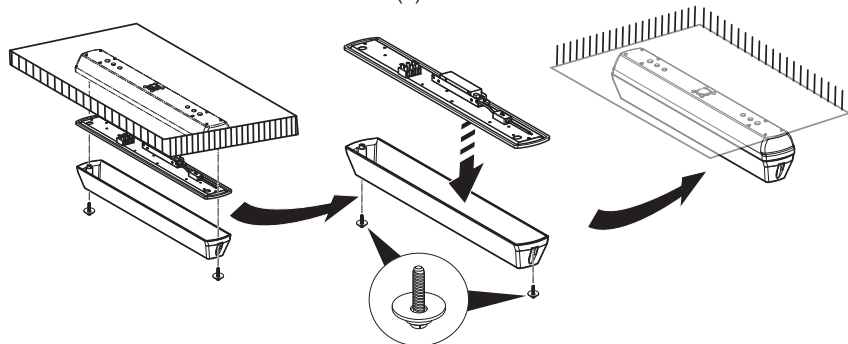
(3)



(4)



(5)



- (3) Remove diffuser by unscrewing the two screws at either end of the luminaire. Detach the diffuser from the base of the body.
  - (4) Connect mains cable to the terminal block on the gear-tray.
  - (5) Mount the gear-tray back to the body to secure it. Position the diffuser and use the washer and screw to secure it into the base of the body.
- IMPORTANT:** The washer and the screw must be secured tightly to ensure that the water does not enter into the batten.
- (6) Reconnect the mains supply.

**Technical data**

Cat No.	TPTUFF600
Voltage Rating	230 - 240 V~, 50 Hz
Current	60 mA
LED Power	10 W
Lumens	1250 lm
Colour Temp	Selectable 3000K / 4000K / 5700K
CRI	> 80
IP Rating	IP65
IK Rating	IK08
LED Lamp Life (L70)	50,000 Hrs
Dimensions mm (LxWxH)	680 x 95 x 115
Operating Temp	-10°C to 45°C
Operating Humidity	10% to 95% RH non condensing
Weight	~1.42 kg
Class	I

**Warranty information (Australia)**

We warrant this product for 5 years—  
 visit <https://www.schneider-electric.com.au/en/aboutus/legal/terms-and-conditions.jsp>  
 Our goods also come with guarantees that cannot be excluded under the Australian Consumer Law. You are entitled to a replacement or refund for a major failure and compensation for any other reasonably foreseeable loss or damage. You are also entitled to have the goods repaired or replaced if the goods fail to be of acceptable quality and the failure does not amount to a major failure.

**Schneider Electric (Australia) Pty Ltd**

33-37 Port Wakefield Road, Gepps Cross, SA 5094  
**Customer Care:** 13 73 28  
**Email:** [customer care.au@se.com](mailto:customer care.au@se.com)  
[www.clipsal.com](http://www.clipsal.com)

**Warranty information (New Zealand)**

We warrant this product for 5 years—  
 visit <https://www.schneider-electric.co.nz/en/aboutus/legal/terms-and-conditions.jsp>

**Schneider Electric (NZ) Ltd**

Building 6, 60 Highbrook Drive, East Tamaki, 2013, New Zealand  
**Customer Care:** 0800 741 303  
**Email:** [customer care.nz@se.com](mailto:customer care.nz@se.com)  
[www.pdl.co.nz](http://www.pdl.co.nz)

Schneider Electric reserves the right to change specifications, modify designs and discontinue items without incurring obligation and whilst every effort is made to ensure that descriptions, specifications and other information in this instruction is correct, no warranty is given in respect thereof and the company shall not be liable for any error therein.  
 © Schneider Electric 2024. This material is copyright under Australian, New Zealand and international laws. Except as permitted under the relevant law, no part of this work may be reproduced by any process without prior written permission of and acknowledgement to Schneider Electric.