

TPWL
TPWLBK



Exterior Wall Light

About this product

Exterior wall lights are commonly mounted on the outside facing walls of buildings. This type of exterior lighting is generally used to provide illumination to ground areas frequented by vehicles and pedestrians.

Product Range

Cat No.	Configuration
TPWL	Exterior Wall Light
TPWLBK	Exterior Wall Light, Black

1 Package contents

- A Exterior Wall Light
- B Accessories
- C Installation guide

2 Dimensions

3 Mounting and installation

⚠ ⚠ DANGER

HAZARD OF ELECTRIC SHOCK

- This product must be installed and serviced by appropriately qualified and/or licenced electrical personnel.
- Isolate the electrical supply before doing any work on this product.
- Ensure that the product has been correctly installed and tested for safe operation before reconnecting the electrical supply.
- To comply with all safety standards, the product must be used only for the purpose described in this instruction and must be installed in accordance with the wiring rules and regulations in the location where it is installed.

Failure to follow these instructions will result in death or serious injury.

⚠ CAUTION

RISK OF EQUIPMENT DAMAGE

The certified GU10 lamps contained in this luminaire shall only be replaced by the manufacturer, a service agent, or a similarly qualified person.

Failure to follow these instructions can result in minor injuries or equipment damage.

⚠ CAUTION

RISK OF BURN INJURIES

During and after use, the product may be hot. Do not touch the product before it has completely cooled down.

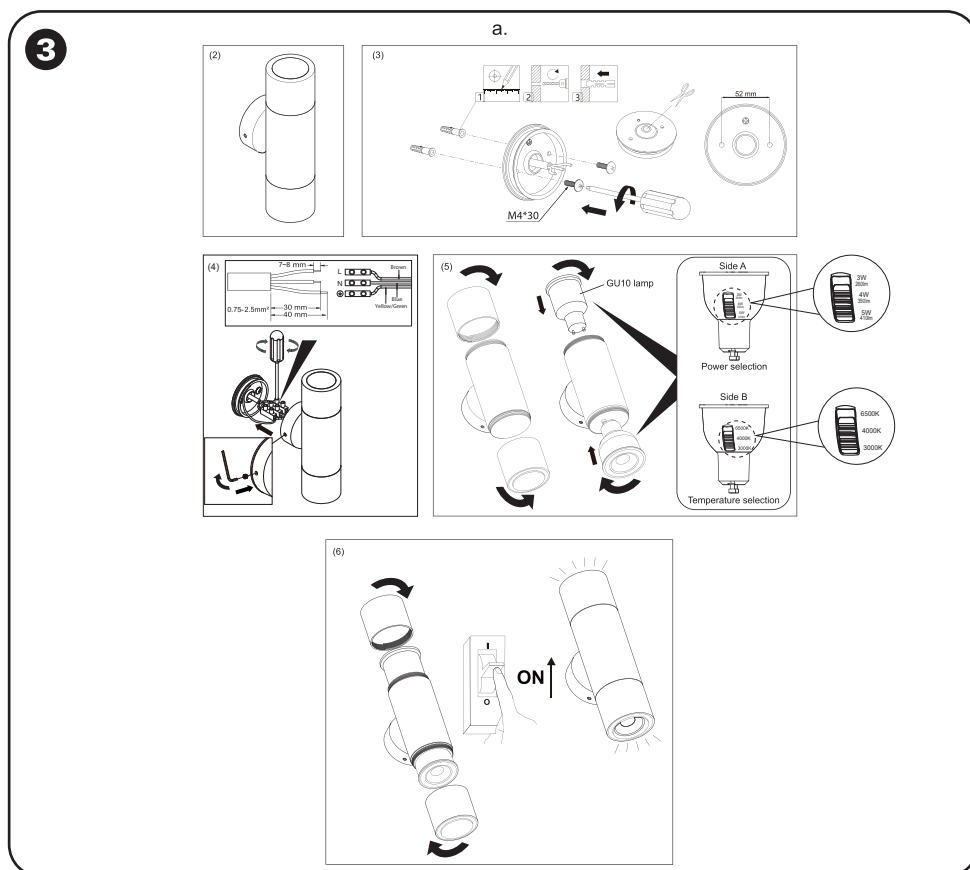
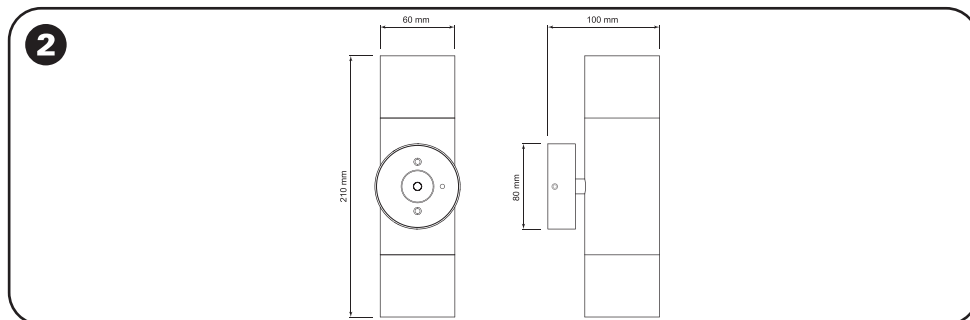
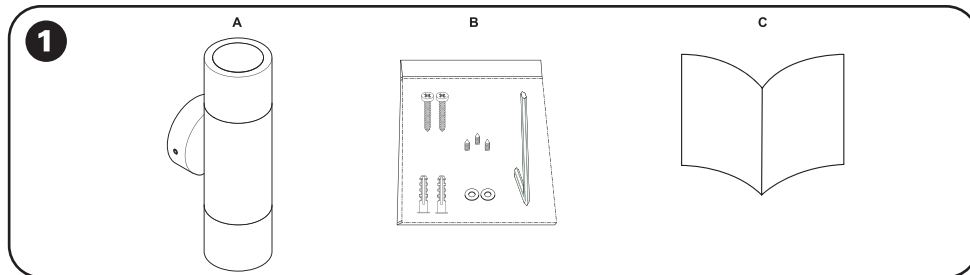
Failure to follow these instructions can result in minor injuries or equipment damage.

Installation requirements

- Check whether the product has been damaged during transport. Do not operate/install any product which appears damaged in any way. Return the complete wall light to place of purchase for inspection, repair or replacement.
- Take care not to pull any electrical wires during unpacking, as this may damage the connection.
- There are no user serviceable parts inside.

a. Installation Instruction

- (1) Disconnect mains supply before Installation.
 - (2) Remove the cover.
 - (3) Drill two holes in the desired installation position and secure the cover plate.
 - (4) Connecting the power cable to the terminal block. Mount the housing to the cover plate, tighten the screws with the provided Allen key.
 - (5) Remove the lampshade, use the switch to select the required color temperature and power.
- NOTE:** By default, the switch is set to a color temperature of 3000K and a power of 5W.
- (6) Attach the lampshade and reconnect the mains supply.



Technical data

Cat No.	TPWL
Voltage Rating	230 - 240Vac, 50Hz
IP Rating	IP54
IK Rating	IK10
Total Power Consumption	2 x 3W/4W/5W (Selectable)
Beam Angle	60°(GU10 light only) , 190° (whole product)
Lumen Output	2 x 260lm/ 350lm/ 410lm
Operating Temperature	-10°C to +45°C
Operating Humidity	10% to 95%, RH, no condensing
CRI	>80
Colour Temperature	3000K/4000K/ 6500K (Selectable)
Current	40mA
Inrush Current	8A @ 20 µs
Dimension L × H × W	100mm × 210mm × 80mm
Lifespan L70/B50 @25°C	15,000 hours for GU10
Material	Aluminium
Dimmable	No
Class	Class I
Warranty	5 Years for product housing, 1 Year for GU10 lamp

Warranty Information

We warrant this product housing for 5 years and the GU10 lamp for 1 year—visit

<https://www.schneider-electric.com.au/en/about-us/legal/terms-and-conditions.jsp> for details.

Our goods also come with guarantees that cannot be excluded under the Australian Consumer Law. You are entitled to a replacement or refund for a major failure and compensation for any other reasonably foreseeable loss or damage. You are also entitled to have the goods repaired or replaced if the goods fail to be of acceptable quality and the failure does not amount to a major failure.

Schneider Electric (Australia) Pty Ltd

Customer Care: 13 73 28
33-37 Port Wakefield Road, Gepps Cross SA 5094
Email: customercare.au@schneider-electric.com
www.schneider-electric.com.au

Schneider Electric reserves the right to change specifications, modify designs and discontinue items without incurring obligation and whilst every effort is made to ensure that descriptions, specifications and other information in this instruction is correct, no warranty is given in respect thereof and the company shall not be liable for any error therein.

© Schneider Electric 2025

This material is copyright under Australian, New Zealand and international laws. Except as permitted under the relevant law, no part of this work may be reproduced by any process without prior written permission of and acknowledgement to Schneider Electric.