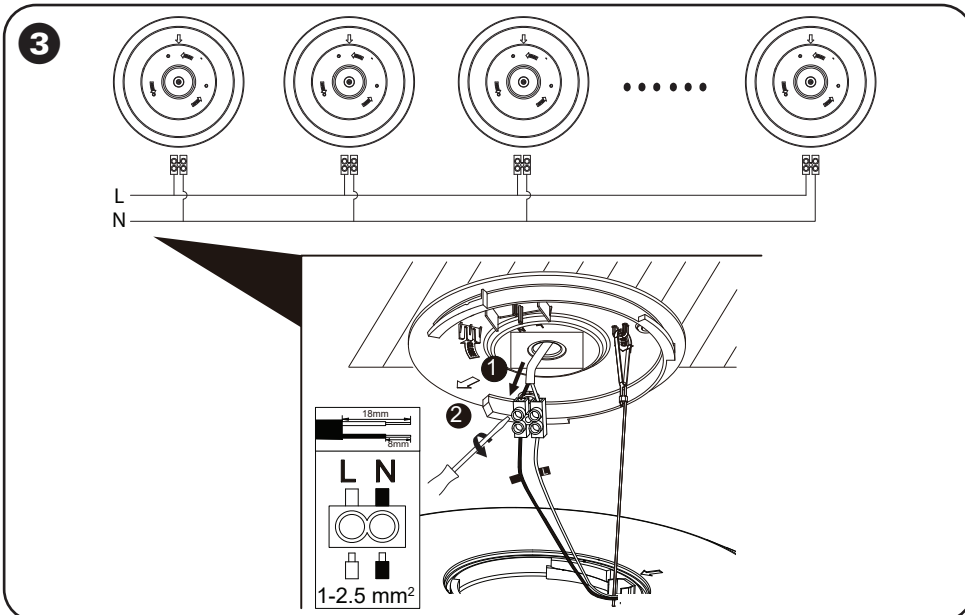
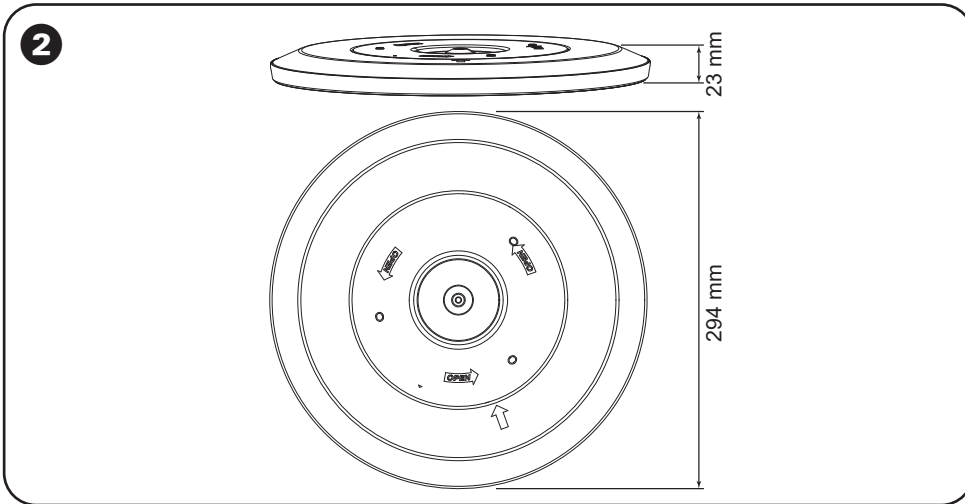
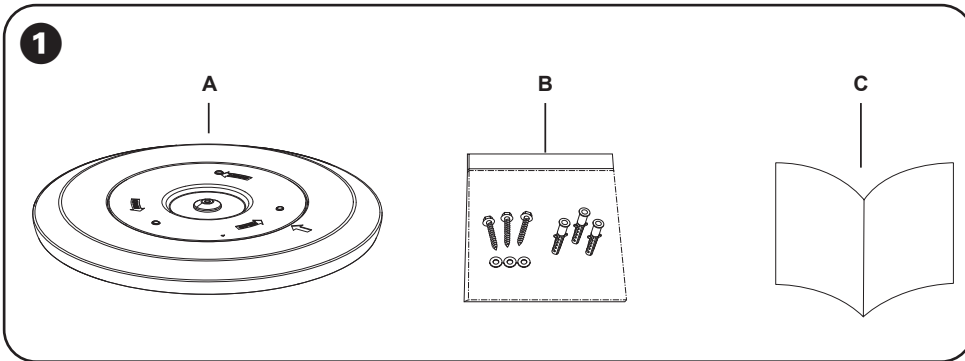


TPCLS



Ceiling Light

Product Range

Cat No.	Configuration
TPCLS	Ceiling Light

1 Package contents

- A Ceiling light
- B Screw pack (3 screws, 3 wall plugs and 3 gaskets)
- C Installation guide

2 Dimension

3 Wiring diagram

4 Mounting and installation

⚠ ⚠ DANGER

HAZARD OF ELECTRIC SHOCK

- This product must be installed and serviced by appropriately qualified and/or licensed electrical personnel.
- Isolate the electrical supply before doing any work on this product.
- Suitable for indoor use.
- Ensure that the product has been correctly installed and tested for safe operation before reconnecting the electrical supply.
- To comply with all safety standards, the product must be used only for the purpose described in this instruction and must be installed in accordance with the wiring rules and regulations in the location where it is installed.

Failure to follow these instructions will result in death or serious injury.

⚠ CAUTION

RISK OF EQUIPMENT DAMAGE

The light source of this luminaire is not replaceable; when the light source reaches its end of life the whole luminaire shall be replaced.

Failure to follow these instructions can result in minor injuries or equipment damage.

⚠ CAUTION

RISK OF BURN INJURIES

During and after use, the product may be hot. Do not touch the product before it has completely cooled down.

Failure to follow these instructions can result in minor injuries or equipment damage.

Important

- Check whether the product has been damaged during transport. Do not operate/install any product which appears damaged in any way. Return the complete ceiling light to place of purchase for inspection, repair or replacement.
- Take care not to pull any electrical wires during unpacking, as this may damage the connection.

Mounting and installation instruction

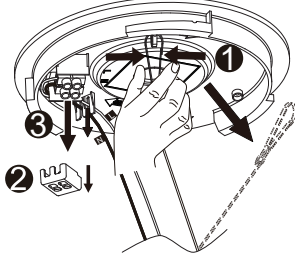
- (1) Open the back plate.
- (2) Unclip the lanyard and remove the terminal blocks and wire.
- (3) Poke the bushing, then drill three holes in the ceiling, and securely mount the back plate with the included fixings.
- (4) Use the toggle the button to select the colour temperature required.
- (5) Reconnect the lanyard.
- (6) Connect the cable into the terminal block.
- (7) Re-insert the terminal block and align the wires into their corresponding channels.
- (8) Align the two arrows and screw on the luminaire, then turn on the mains power supply.

4

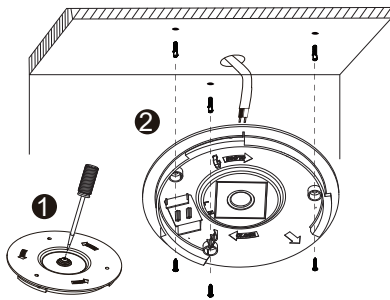
(1)



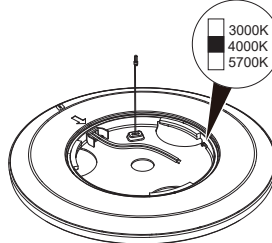
(2)



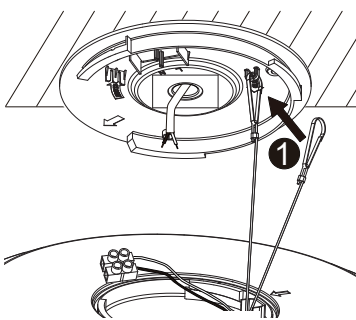
(3)



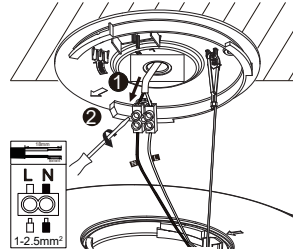
(4)



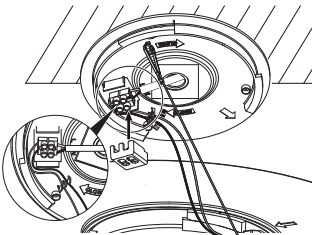
(5)



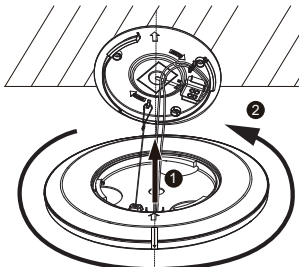
(6)



(7)



(8)

**Warranty information (New Zealand)**

We warrant this product for 5 years—
visit <https://www.schneider-electric.co.nz/en/aboutus/legal/terms-and-conditions.jsp>

Schneider Electric (NZ) Ltd

Building 6, 60 Highbrook Drive, East Tamaki, 2013,
New Zealand

Customer Care: 0800 741 303

Email: customer-care.nz@se.com

www.pdl.co.nz

Schneider Electric reserves the right to change specifications, modify designs and discontinue items without incurring obligation and whilst every effort is made to ensure that descriptions, specifications and other information in this instruction is correct, no warranty is given in respect thereof and the company shall not be liable for any error therein.

© Schneider Electric 2024. This material is copyright under Australian, New Zealand and international laws. Except as permitted under the relevant law, no part of this work may be reproduced by any process without prior written permission of and acknowledgement to Schneider Electric.

Technical data

Cat No.	TPCLS
Wattage	17 W
Voltage	230 - 240 V~, 50 Hz
Current	95 mA
Operating temperature	-10 °C ~ 45 °C
Diameter	294 mm
Height	23 mm
Lumen output	1700 lm
PF	0.9
CCT	3000K/4000K/5700K
Weight	590 g
Class	II

Warranty information (Australia)

We warrant this product for 5 years—
visit <https://www.schneider-electric.com.au/en/aboutus/legal/terms-and-conditions.jsp>

Our goods also come with guarantees that cannot be excluded under the Australian Consumer Law. You are entitled to a replacement or refund for a major failure and compensation for any other reasonably foreseeable loss or damage. You are also entitled to have the goods repaired or replaced if the goods fail to be of acceptable quality and the failure does not amount to a major failure.

Schneider Electric (Australia) Pty Ltd

33-37 Port Wakefield Road, Gepps Cross, SA 5094

Customer Care: 13 73 28

Email: customer-care.au@se.com

www.clipsal.com