

The Essentials Installation Materials

Technical Catalogue

 **CLIPSAL**[®]

clipsal.com/essentials

Schneider
Electric



FOR WINDOW
1180mm
↓

44A

5x1

50
ONE

Contents

Mounting Accessories	5-41
Metal Brackets	5-14
C-Clips	15-17
Mounting Blocks.....	18-26
Mounting Enclosures.....	27-29
Wall Box Metal.....	30-32
Wall Box Fire Rated.....	33-34
Wall Box Plastic	35-37
Shrouds	38-41
Plugs, Sockets, and Inlets.....	42-63
Sockets.....	43-53
Plugs.....	54-58
Extension Sockets.....	59
Pendant Sockets	60
Socket Inlets.....	61-63
Cable Attachments	64-71
Terminals	65
Cable Connectors	65
Grommets and Glands.....	69-71
Tools and Testers	72-77
Conduit Bending Springs.....	73
Drill Bits	74
Testers	75
Tester Accessories.....	76-77
Connection Boxes.....	78-89
Junction Boxes.....	79-81
Mains Connection Boxes.....	82-89
Fixings.....	90-93
Other Installation Material Accessories.....	94-95
Reference Numbers	96-97



Mounting Accessories

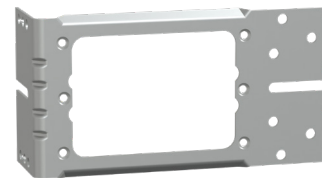
Mounting Accessories

Metal Brackets

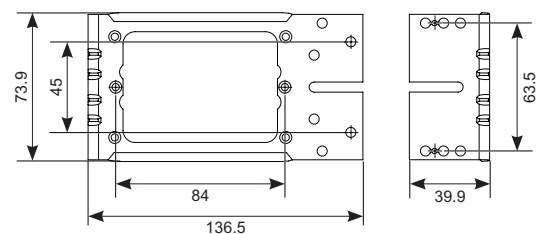
155

Clipsal - Metal mounting bracket, 1-gang, horizontal mount

Main	
Range	Clipsal
Commercial Reference	155
Product Type	Mounting bracket
Fixing Mode	Timber and stud fixing
Complementary	
Product Compatibility	Mounts any accessory with 84 mm mounting centres
Number of Gangs	1
Mounting Orientation	Horizontal
Suitable Frame Type	Timber
Material	Electro-galvanised steel
Material Thickness	1.2 mm
Product Weight	60 g
Dimensions (H × W × D)	135 × 72 × 37 mm
Mounting Centres	84 mm
Aperture Size	76 × 51 mm



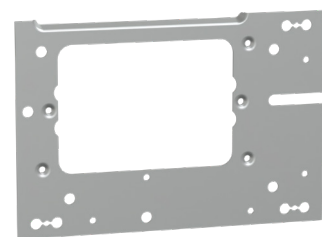
Dimensions (mm)



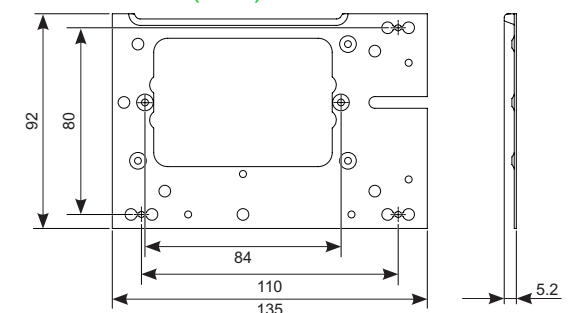
155F

Clipsal - Metal bracket, 1-gang, flat front

Main	
Range	Clipsal
Commercial Reference	155F
Product Type	Mounting bracket
Fixing Mode	Fixes to front of stud for direct mounting
Complementary	
Product Compatibility	Mounts any accessory with 84 mm mounting centres
Number of Gangs	1
Mounting Orientation	Horizontal
Suitable Frame Type	Timber and steel
Material	Electro-galvanised steel
Material Thickness	1.2 mm
Product Weight	53 g
Dimensions (H × W × D)	135 × 92 × 3 mm
Mounting Centres	84 mm
Aperture Size	76 × 55 mm



Dimensions (mm)



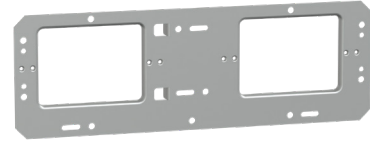
Mounting Accessories

Metal Brackets

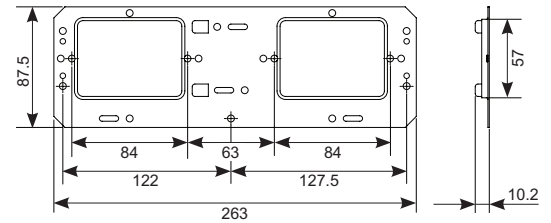
155H2

Clipsal - Metal bracket, 2-gang, front stud mount, horizontal mount

Main	
Range	Clipsal
Commercial Reference	155H2
Product Type	Mounting bracket
Fixing Mode	Timber and stud fixing
Complementary	
Product Compatibility	Mounts any accessory with 84 mm mounting centres x 2
Number of Gangs	2
Mounting Orientation	Horizontal
Suitable Frame Type	Timber
Material	Electro-galvanised steel
Material Thickness	1.2 mm
Product Weight	151 g
Dimensions (H x W x D)	87.5 x 263 x 10.2 mm
Mounting Centres	84 mm



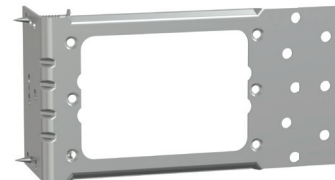
Dimensions (mm)



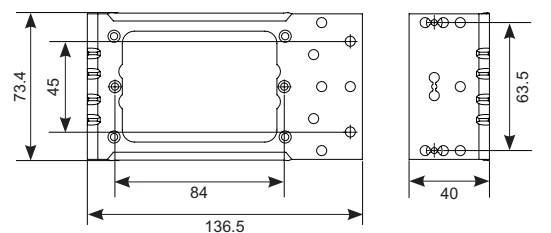
155N

Clipsal - Metal bracket with fixing nails, 1-gang, horizontal mount

Main	
Range	Clipsal
Commercial Reference	155N
Product Type	Mounting bracket
Fixing Mode	Timber and stud fixing with fixing nails
Complementary	
Product Compatibility	Mounts any accessory with 84 mm mounting centres
Number of Gangs	1
Mounting Orientation	Horizontal
Suitable Frame Type	Timber
Material	Electro-galvanised steel
Material Thickness	1.2 mm
Product Weight	60 g
Dimensions (H x W x D)	135 x 72 x 37 mm
Mounting Centres	84 mm
Aperture Size	76 x 51 mm



Dimensions (mm)



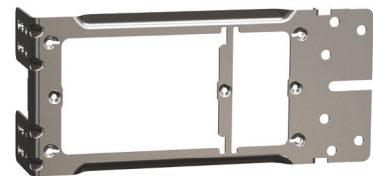
Mounting Accessories

Metal Brackets

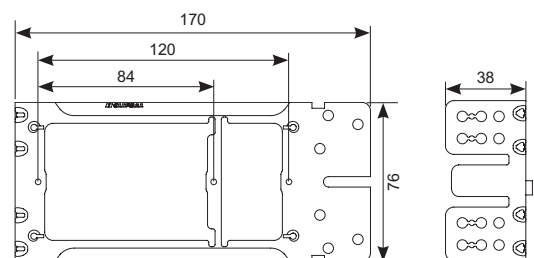
155U4

Clipsal - Bracket metal 120 mm mounting stud, 2/4-gang

Main	
Range	Clipsal - mounting accessories
Commercial Reference	155U4
Product Type	2-gang/4-gang stud bracket
Assembly Type	Component
Complementary	
Product Compatibility	Suits Solis and Solis T-Series, also mounts all 84 mm mounting centres
Material	Steel
Surface Treatment	Galvanized
Installation Orientation	Horizontal only
Mounting Type	Screws (not supplied)
Mounting Centers	84 or 120 mm
Screwdriver Shape	Philips No. 2 (PH2), square drive No. 1 (SQ1)
Net Weight	73 g
Dimensions (H × W × D)	170 × 76 × 38 mm



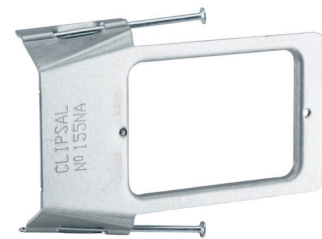
Dimensions (mm)



155NA

Clipsal - Metal bracket with skew fixing nails, 1-gang, horizontal mount

Main	
Range	Clipsal
Commercial Reference	155NA
Product Type	Mounting bracket
Fixing Mode	Skew fixing nails for stud fixing
Complementary	
Product Compatibility	Mounts any accessory with 84 mm mounting centres
Number of Gangs	1
Mounting Orientation	Horizontal
Suitable Frame Type	Timber
Material	Electro-galvanised steel
Material Thickness	1.2 mm
Product Weight	55 g
Dimensions (H × W × D)	135 × 72 × 37 mm
Mounting Centres	84 mm
Aperture Size	76 × 52 mm



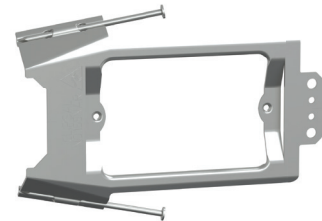
Mounting Accessories

Metal Brackets

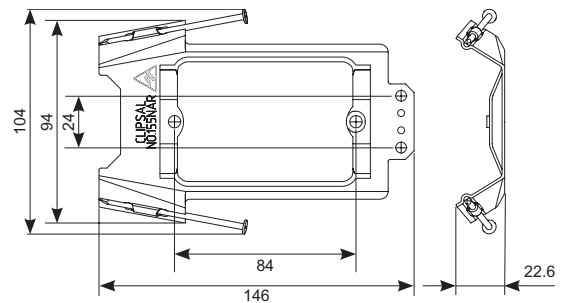
155NAR

Clipsal - Metal bracket with skew fixing nails, 1-gang, and recessed mounting

Main	
Range	Clipsal
Commercial Reference	155NAR
Product Type	Mounting bracket
Fixing Mode	Skew fixing nails for stud fixing
Complementary	
Product Compatibility	Mounts any accessory with 84 mm mounting centres
Number of Gangs	1
Mounting Orientation	Horizontal
Suitable Frame Type	Timber
Material	Electro-galvanised steel
Material Thickness	1.2 mm
Product Weight	65 g
Dimensions (H × W × D)	128 × 102 × 22 mm
Mounting Centres	84 mm
Aperture Size	76 × 52 mm



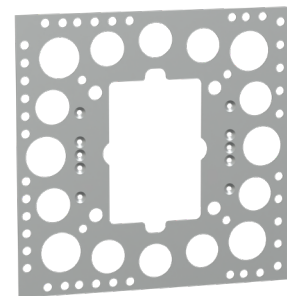
Dimensions (mm)



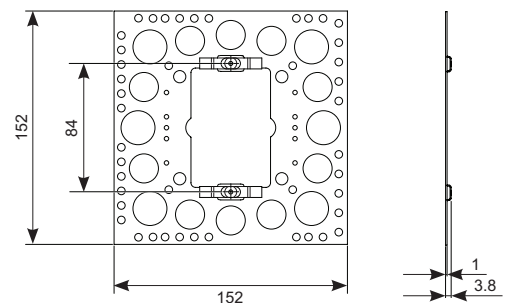
155P

Clipsal - Metal plaster mounted bracket to suit rendered plaster walls, 1-gang

Main	
Range	Clipsal
Commercial Reference	155P
Product Type	Mounting bracket
Fixing Mode	Plaster mounted
Complementary	
Product Compatibility	Mounts any accessory with 84 mm mounting centres
Number of Gangs	1
Mounting Orientation	Horizontal and vertical
Suitable Wall Type	Rendered plaster
Material	Electro-galvanised steel
Material Thickness	1.2 mm
Product Weight	100 g
Dimensions (H × W × D)	152 × 152 × 3 mm
Mounting Centres	84 mm
Aperture Size	75 × 52 mm



Dimensions (mm)



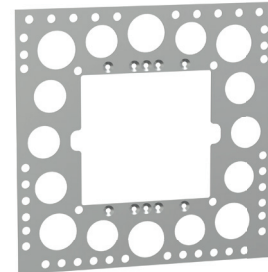
Mounting Accessories

Metal Brackets

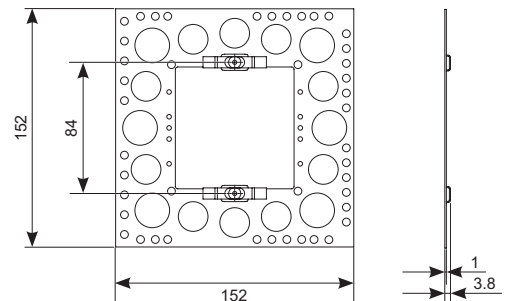
155P2

Clipsal - Metal brackets to suit 2-gang, prestige plates

Main	
Range	Clipsal
Commercial Reference	155P2
Product Type	Mounting bracket
Fixing Mode	Plaster mounted
Complementary	
Product Compatibility	Mounts any accessory with 84 mm mounting centres
Number of Gangs	2
Mounting Orientation	Horizontal and vertical
Suitable Wall Type	Rendered plaster
Material	Electro-galvanised steel
Material Thickness	1.2 mm
Product Weight	80 g
Dimensions (H × W × D)	152 × 152 × 3 mm
Mounting Centres	84 mm
Aperature Size	76 × 76 mm



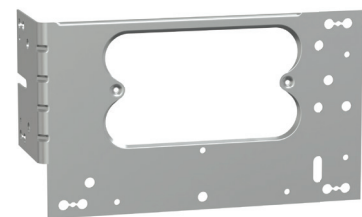
Dimensions (mm)



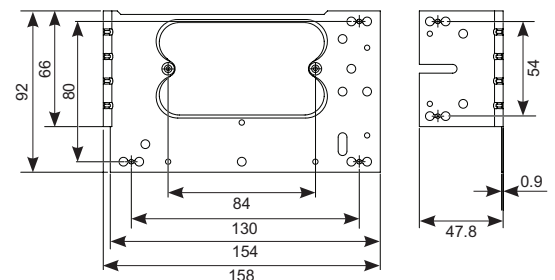
155VH

Clipsal - Metal bracket mount, 1-gang, standard universal

Main	
Range	Clipsal
Commercial Reference	155VH
Product Type	Mounting bracket
Fixing Mode	Fixes to side or front of timber stud
Complementary	
Product Compatibility	Mounts any accessory with 84 mm mounting centres
Number of Gangs	1
Mounting Orientation	Horizontal and vertical
Suitable Frame Type	Timber
Material	Electro-galvanised steel
Material Thickness	1.2 mm
Product Weight	91 g
Dimensions (H × W × D)	158 × 92 × 38 mm
Mounting Centres	84 mm
Aperature Size	76 × 54 mm



Dimensions (mm)



Mounting Accessories

Metal Brackets

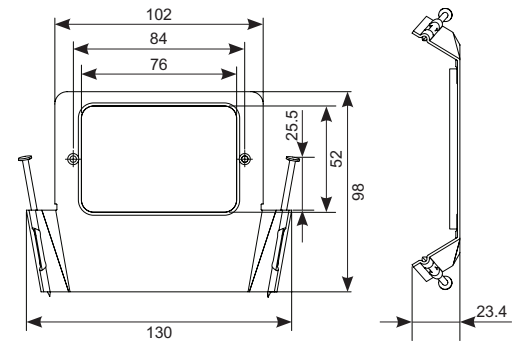
155VNA

Clipsal - Metal bracket, 1-gang with skew fixing nails vertical mount

Main	
Range	Clipsal
Commercial Reference	155VNA
Product Type	Mounting bracket
Fixing Mode	Skew fixing nails for stud fixing
Complementary	
Product Compatibility	Mounts any accessory with 84 mm mounting centres
Number of Gangs	1
Mounting Orientation	Vertical
Suitable Frame Type	Timber
Material	Electro-galvanised steel
Material Thickness	1.2 mm
Product Weight	86 g
Dimensions (H × W × D)	130 × 90 × 22 mm
Mounting Centres	84 mm
Aperture Size	76 × 52 mm



Dimensions (mm)



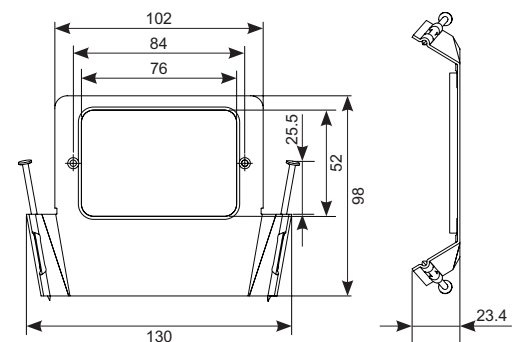
155VNAR

Clipsal - Metal bracket, skew fixing nails, 1-gang, and recessed mount centres

Main	
Range	Clipsal
Commercial Reference	155VNAR
Product Type	Mounting bracket
Fixing Mode	Skew fixing nails for stud fixing
Complementary	
Product Compatibility	Mounts any accessory with 84 mm mounting centres
Number of Gangs	1
Mounting Orientation	Vertical
Suitable Frame Type	Timber
Material	Electro-galvanised steel
Material Thickness	1.2 mm
Product Weight	92 g
Dimensions (H × W × D)	130 × 90 × 22 mm
Mounting Centres	84 mm
Aperture Size	76 × 52 mm



Dimensions (mm)



Mounting Accessories

Metal Brackets

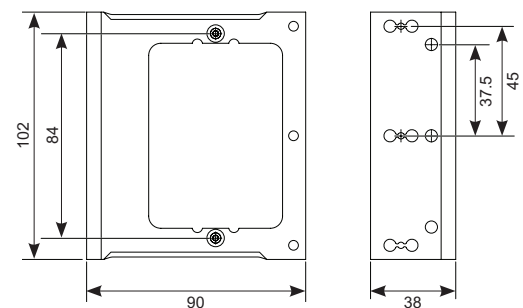
156/1

Clipsal - Metal bracket, 1-gang, vertical mount

Main	
Range	Clipsal
Commercial Reference	156/1
Product Type	Mounting bracket
Fixing Mode	Fixes to front or side of timber stud
Complementary	
Product Compatibility	Mounts any accessory with 84 mm mounting centres
Number of Gangs	1
Mounting Orientation	Vertical
Suitable Frame Type	Timber
Material	Electro-galvanised steel
Material Thickness	1.2 mm
Product Weight	56 g
Dimensions (H × W × D)	102 × 90 × 38 mm
Mounting Centres	84 mm
Aperture Size	76 × 51 mm



Dimensions (mm)



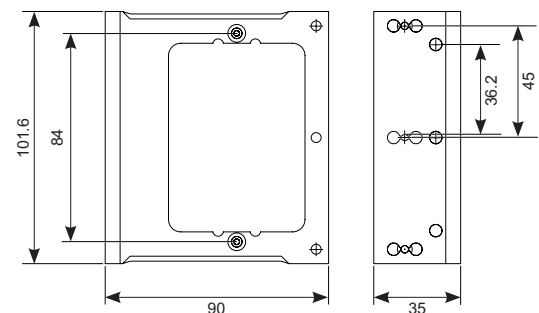
156/1N

Clipsal - Metal bracket, 1-gang, vertical mount with fixing nails

Main	
Range	Clipsal
Commercial Reference	156/1N
Product Type	Mounting bracket
Fixing Mode	Timber and stud fixing with fixing nails
Complementary	
Product Compatibility	Mounts any accessory with 84 mm mounting centres
Number of Gangs	1
Mounting Orientation	Vertical
Suitable Frame Type	Timber
Material	Electro-galvanised steel
Material Thickness	1.2 mm
Product Weight	60 g
Dimensions (H × W × D)	102 × 90 × 38 mm
Mounting Centres	84 mm
Aperture Size	76 × 51 mm



Dimensions (mm)



Mounting Accessories

Metal Brackets

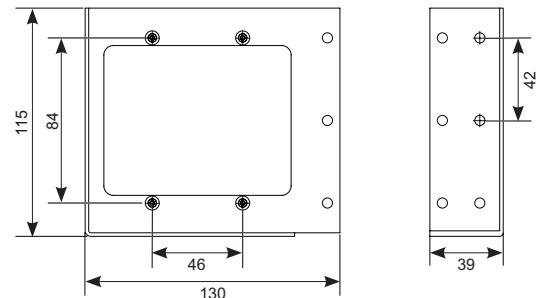
156/2

Clipsal - Metal bracket, 2-gang, large size, vertical mount

Main	
Range	Clipsal
Commercial Reference	156/2
Product Type	Mounting bracket
Fixing Mode	Fixes to front or side of timber stud
Complementary	
Product Compatibility	Mounts any accessory with 84 mm mounting centres
Number of Gangs	2
Mounting Orientation	Vertical
Suitable Frame Type	Timber
Material	Electro-galvanised steel
Material Thickness	1.2 mm
Product Weight	106 g
Dimensions (H × W × D)	115 × 129 × 39 mm
Mounting Centres	84 mm
Aperture Size	95 × 76 mm



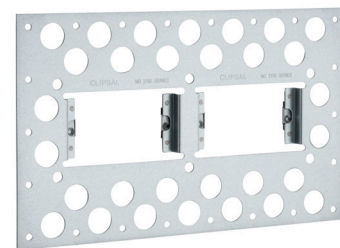
Dimensions (mm)



2155PHRM2

Clipsal - Metal plaster bracket horizontal, 2-gang, recess mount

Main	
Range	Clipsal
Commercial Reference	2155PHRM2
Product Type	Series 2000H2
Fixing Mode	Plaster mounted
Complementary	
Product Compatibility	Standard Series, 2000 Series, C2000 Series, Iconic, Pro Series, Saturn
Number of Gangs	2
Mounting Orientation	Horizontal
Suitable Wall Type	Rendered plaster
Material	Electro-galvanised steel
Material Thickness	1.2 mm
Product Weight	302 g
Dimensions (H × W × D)	300 × 180 × 13 mm
Mounting Centres	2 × 84 mm (71 mm apart)
Aperture Size	76 × 128 mm



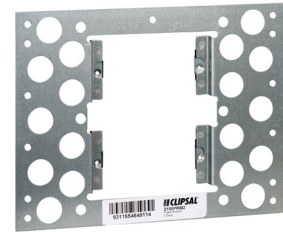
Mounting Accessories

Metal Brackets

2155PRM2

Clipsal - Metal plaster bracket vertical, 2-gang, recess mount

Main	
Range	Clipsal
Commercial Reference	2155PRM2
Product Type	Series 2000/2
Fixing Mode	Plaster mounted
Complementary	
Number of Gangs	2
Mounting Orientation	Vertical
Suitable Wall Type	Rendered plaster
Material	Electro-galvanised steel
Material Thickness	1.2 mm
Product Weight	184 g
Dimensions (H × W × D)	170 × 220 × 13 mm



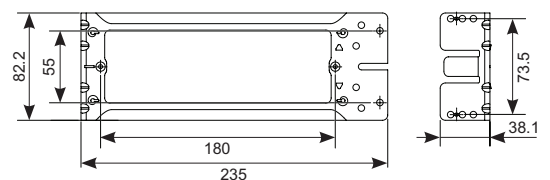
3155H4

Clipsal Iconic - Bracket quad socket, 4-gang, horizontal mount

Main	
Range	Clipsal Iconic
Commercial Reference	3155H4
Product Type	Mounting bracket
Fixing Mode	Timber and stud fixing
Complementary	
Product Compatibility	Iconic 4-gang GPO
Number of Gangs	4
Mounting Orientation	Horizontal
Suitable Frame Type	Timber
Material	Electro-galvanised steel
Material Thickness	1.2 mm
Product Weight	92 g
Dimensions (H × W × D)	237 × 82 × 38 mm
Mounting Centres	179.8 mm
Aperture Size	170 × 56 mm



Dimensions (mm)



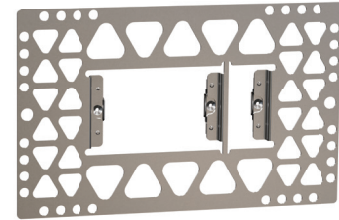
Mounting Accessories

Metal Brackets

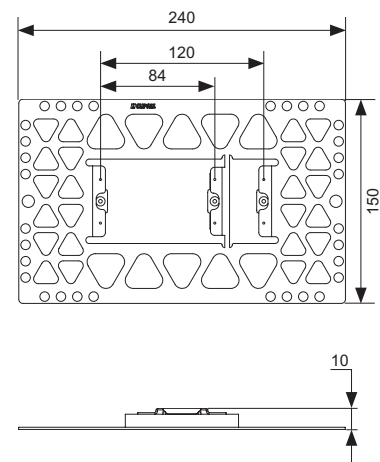
155PRMU4

Clipsal - Bracket plaster 120 mm recessed mount, 2/4-gang

Main	
Range	Clipsal
Commercial reference	155PRMU4
Product type	2-gang/4-gang plaster bracket
Assembly type	Component
Complementary	
Material	Steel
Surface treatment	Galvanized
Installation orientation	Horizontal only
Mounting type	Screws (not supplied)
Mounting centers	84 or 120 mm
Screwdriver shape	Philips No. 2 (PH2), square drive No. 1 (SQ1)
Net weight	152.5 g
Dimensions (H × W × D)	150 × 240 × 10 mm



Dimensions (mm)



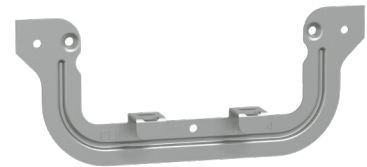
Mounting Accessories

C-Clips

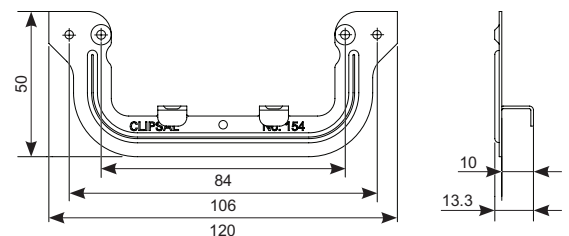
154

Clipsal - Mounting wall board clip, 1-gang, suits up to 12 mm

Main	
Range	Clipsal
Commercial Reference	154
Product or Component Type	Clip
Fixing Mode	Clips onto plasterboard or hardboard
Complementary	
Product Compatibility	Mounts any accessory with 84 and 50 mm mounting centres
Number of Gangs	1
Mounting Orientation	Horizontal and vertical
Suitable Material Type	Up to 12 mm thick plasterboard or hardboard
Material	Electro-galvanised steel
Material Thickness	1.2 mm
Product Weight	22 g
Dimensions (H × W × D)	120 × 50 × 13 mm
Mounting Centres	84 and 50 mm
Aperture Size	76 × 51 mm



Dimensions (mm)



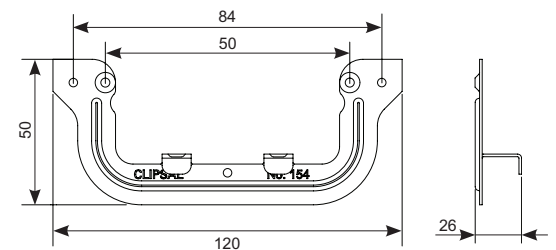
154/1

Clipsal - Mounting wall board clip, 1-gang, suits up to 19...25 mm

Main	
Range	Clipsal
Commercial Reference	154/1
Product Type	Clip
Fixing Mode	Clips onto plasterboard or hardboard
Complementary	
Product Compatibility	Mounts any accessory with 84 and 50 mm mounting centres
Number of Gangs	1
Mounting Orientation	Horizontal and vertical
Suitable Material Type	Suits 19...25 mm thick plasterboard or hardboard
Material	Electro-galvanised steel
Material Thickness	1.2 mm
Product Weight	22 g
Dimensions (H × W × D)	120 × 50 × 26 mm
Mounting Centres	84 and 50 mm
Aperture Size	76 × 51 mm



Dimensions (mm)



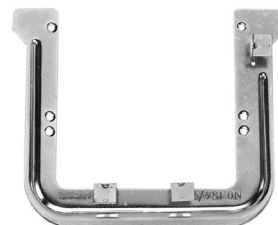
Mounting Accessories

C-Clips

154/2

Clipsal - Mounting wall board clip, 2-gang

Main	
Range	Clipsal
Commercial Reference	154/2
Product Type	Clip
Fixing Mode	Clips onto plasterboard or hardboard
Complementary	
Product Compatibility	Mounts all 2-gang accessories with 84 and 46 mm mounting centres
Number of Gangs	2
Mounting Orientation	Horizontal and vertical
Suitable Material Type	Up to 12 mm thick plasterboard or hardboard
Material	Electro-galvanised steel
Material Thickness	1.2 mm
Product Weight	33 g
Dimensions (H × W × D)	120 × 96 × 14 mm
Mounting Centres	84 and 50 mm
Aperture Size	76 × 51 mm



154RM

Clipsal - Mounting wall board clip, 1-gang

Main	
Range	Clipsal
Commercial Reference	154RM
Product Type	Clip
Fixing Mode	Clips onto variety of wall panels
Complementary	
Number of Gangs	1
Mounting Orientation	Horizontal and vertical
Suitable Material Type	Suits 5...10 mm wall panels
Material	Electro-galvanised steel
Material Thickness	1.2 mm
Product Weight	19 g
Dimensions (H × W × D)	120 × 50 × 11 mm
Mounting Centres	84 mm
Aperture Size	76 × 51 mm



Mounting Accessories

C-Clips

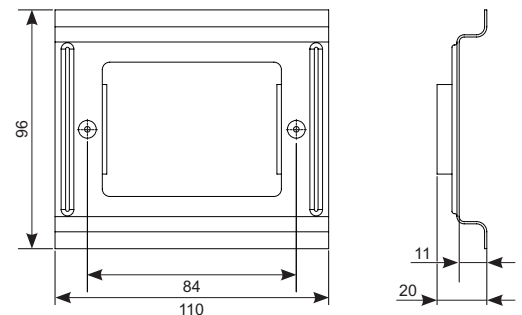
154B25

Clipsal - Metal bracket to suit redesigned B25 series, 1-gang

Main	
Range	Clipsal
Commercial Reference	154B25
Product or Component Type	Clip
Fixing Mode	Clips onto plasterboard or hardboard
Complementary	
Product Compatibility	B25A, BB25A, BSL25XA, and BBSL25XA
Number of Gangs	1
Mounting Orientation	Horizontal and vertical
Suitable Material Type	Up to 25 mm thick wall panels
Material	Electro-galvanised steel
Material Thickness	1.2 mm
Product Weight	70 g
Dimensions (H × W × D)	110 × 96 × 20 mm
Mounting Centres	84 mm
Aperature Size	72 × 54 mm



Dimensions (mm)



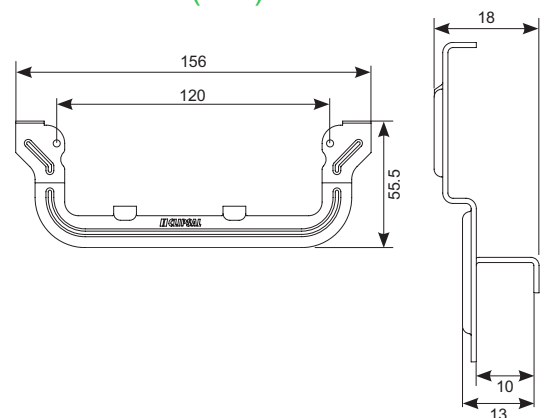
154C4

Clipsal - Clip 120 mm mounting wall board 10 mm, 4-gang

Main	
Range	Clipsal
Commercial reference	154C4
Product type	4-gang C-clip
Assembly type	Component
Complementary	
Material	Steel
Surface treatment	Galvanized
Installation orientation	Horizontal only
Mounting type	Screws (not supplied)
Mounting centers	120 mm
Screwdriver shape	Philips No. 2 (PH2), square drive No. 1 (SQ1)
Net weight	26.5 g
Dimensions (H × W × D)	156 × 55.5 × 18 mm



Dimensions (mm)



Mounting Accessories

Mounting Blocks

2000SMK

Clipsal - Mounting blocks and flanges, 1-gang, surface mounting kit

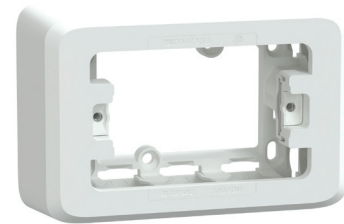
Main	
Range	Clipsal
Commercial Reference	2000SMK-WE
Product or Component Type	Surface mounting kit
Colour	White Electric (WE)
Provided Equipment	Mounting block, surround, fixing screws
Complementary	
Product Compatibility	2000 Series
Number of Gangs	1
Material	PC (Polycarbonate)
Product Weight	59 g
Dimensions (H x W x D)	118 x 78 x 27 mm



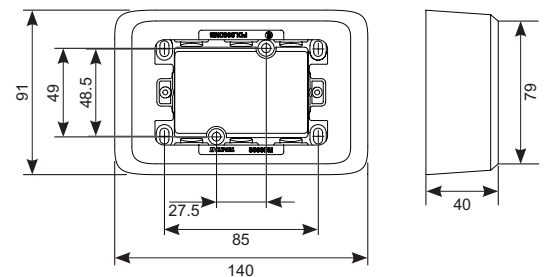
3000DM

Clipsal Iconic - Deep mounting block, 1-gang

Main	
Range	Clipsal Iconic
Commercial Reference	3000DM-VW
Product or Component Type	Mounting Block
Colour	Vivid White (VW)
Provided Equipment	Mounting block, surround
Complementary	
Number of Gangs	1
Screw Thread Type	Split nut
Number of Mounting Screw Positions	6
Material	PC (Polycarbonate) HIPS (High Impact Polystyrene)
Dimensions (H x W x D)	140 x 91 x 40 mm
Mounting Centres	84 mm
Product Weight	82 g



Dimensions (mm)



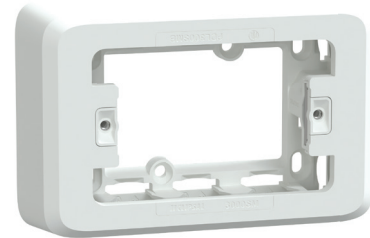
Mounting Accessories

Mounting Blocks

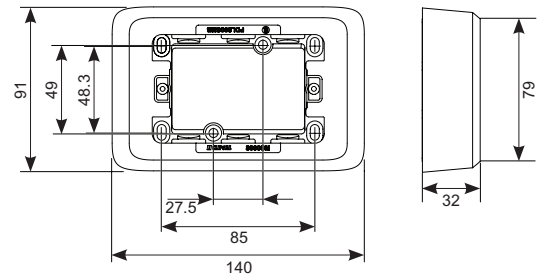
3000SM-VW

Clipsal Iconic - Shallow mounting block, 1-gang

Main	
Range	Clipsal Iconic
Commercial Reference	3000SM-VW
Product or Component Type	Mounting block
Colour	Vivid White (VW)
Complementary	
Product Compatibility	Iconic Series, and mounts any accessory with 84 mm mounting centres
Number of Gangs	1
Screw Thread Type	Split nut
Number of Mounting Screw Positions	6
Number of Conduit Entries	3 per side, 12 entries
Material	PC (Polycarbonate) HIPS (High Impact Polystyrene)
Product Weight	78 g
Dimensions (L x W x D)	140 x 91 x 32 mm
Mounting Centres	84 mm
Standards	AS/NZS 60670.1



Dimensions (mm)



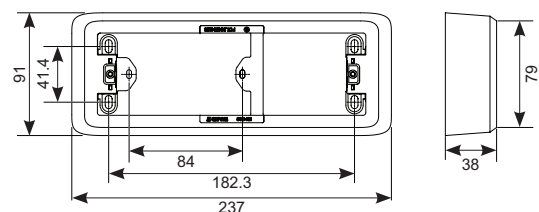
3004M-VW

Clipsal Iconic - Quad socket mounting block, 2-gang

Main	
Range	Clipsal Iconic
Commercial Reference	3004M-VW
Product or Component Type	Mounting block
Colour	Vivid White (VW)
Complementary	
Number of Gangs	2
Screw Thread Type	Split nut
Number of Mounting Screw Positions	6
Material	PC (Polycarbonate) HIPS (High Impact Polystyrene)
Product Weight	107 g
Dimensions (L x W x D)	237 x 91 x 38 mm
Mounting Centres	179.8 and 84 mm
Standards	AS/NZS 60670.1



Dimensions (mm)



Mounting Accessories

Mounting Blocks

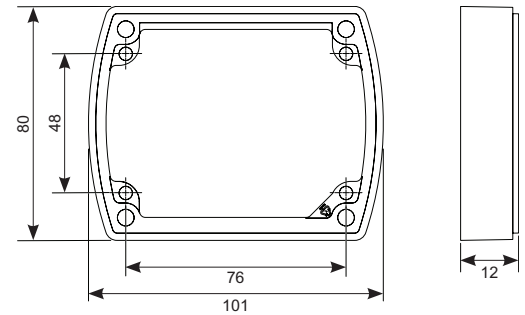
435VFSM

Standard Series - Mounting flange, standard size, slack, 1-gang

Main	
Range	Clipsal
Commercial Reference	435VFSM-WE 435VFSM-BK
Product or Component Type	Mounting flange
Colour	White Electric (WE), Black (BK)
Provided Equipment	Mounting flange
Complementary	
Product Compatibility	435VFS15 and 415VF
Number of Gangs	1
Material	PC + PET (Polycarbonate and Polyethylene Terephthalate)
Product Weight	26 g
Dimensions (L x W x D)	101 x 80 x 12 mm
Mounting Centres	48 and 76 mm



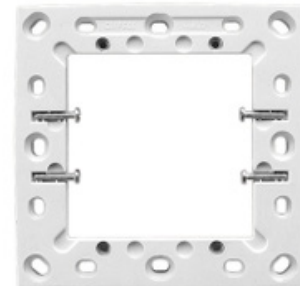
Dimensions (mm)



448SD-WE

Standard Series - Mounting flange, 2-gang, PVC

Main	
Range	Clipsal
Commercial Reference	448SD-WE
Product or Component Type	Mounting flange
Colour	White Electric (WE)
Provided Equipment	Mounting flange, fixing screws
Complementary	
Product Compatibility	Mounts any accessory with 84 mm mounting centres (Iconic and Pro Series may have over-hang from the grid plate)
Number of Gangs	1
Screw Thread Type	Metal insert
Number of Mounting Screw Positions	16
Material	PVC (Polyvinyl Chloride)
Product Weight	76 g
Dimensions (L x W x D)	120 x 120 x 14 mm
Mounting Centres	84 and 46 mm



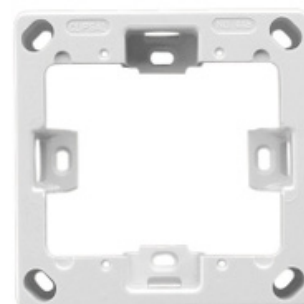
Mounting Accessories

Mounting Blocks

448-WE

Standard Series - Mounting block, 2-gang, square

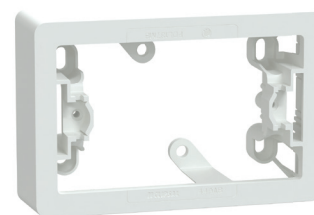
Main	
Range	Clipsal
Commercial Reference	448-WE
Product or Component Type	Mounting block
Colour	White Electric (WE)
Provided Equipment	Mounting block
Complementary	
Number of Gangs	2
Screw Thread Type	Metal insert
Number of Mounting Screw Positions	8
Material	PC (Polycarbonate)
Product Weight	129 g
Dimensions (L × W × D)	120 × 120 × 28 mm
Mounting Centres	84 and 46 mm



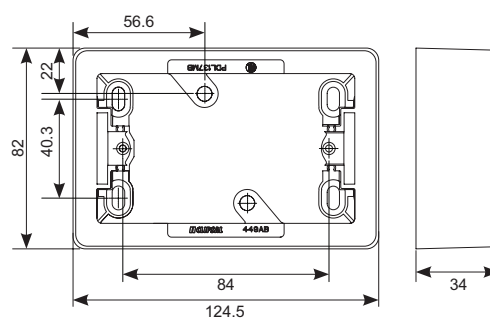
449AB-VW

Standard Series - Standard mounting block, 1-gang

Main	
Range	Clipsal
Commercial Reference	449AB-VW
Product or Component Type	Mounting block
Colour	Vivid White (VW)
Provided Equipment	Mounting block, fixing screws
Complementary	
Product Compatibility	Mounts any accessory with 84 mm mounting centres (Iconic and Pro Series may have over-hang from the grid plate)
Number of Gangs	1
Screw Thread Type	Plastic thread
Number of Mounting Screw Positions	6
Material	PC (Polycarbonate) HIPS (High Impact Polystyrene)
Product Weight	58 g
Dimensions (L × W × D)	124 × 82 × 34 mm
Mounting Centres	84 mm
Standards	AS/NZS 60670.1



Dimensions (mm)



Mounting Accessories

Mounting Blocks

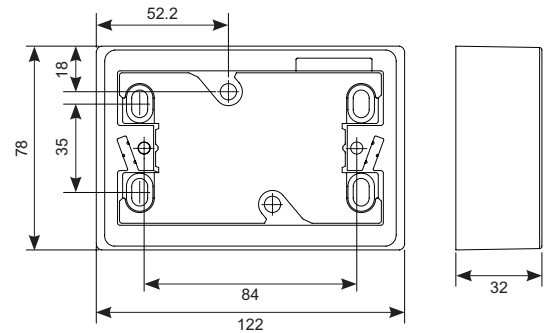
449A

Standard Series - Mounting block, 1-gang

Main	
Range	Clipsal
Commercial Reference	449A-BK 449A-RD
Product or Component Type	Mounting block
Colour	Black (BK), Red (RD)
Provided Equipment	Mounting block, fixing screws
Complementary	
Product Compatibility	Mounts any accessory with 84 mm mounting centres (Iconic and Pro Series may have over-hang from the grid plate)
Number of Gangs	1
Screw Thread Type	Metal insert
Number of Mounting Screw Positions	6
Material	PVC (Polyvinyl Chloride)
Dimensions (L x W x D)	122 x 78 x 32 mm
Mounting Centres	84 mm
Product Weight	17 g



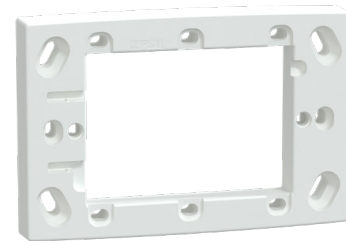
Dimensions (mm)



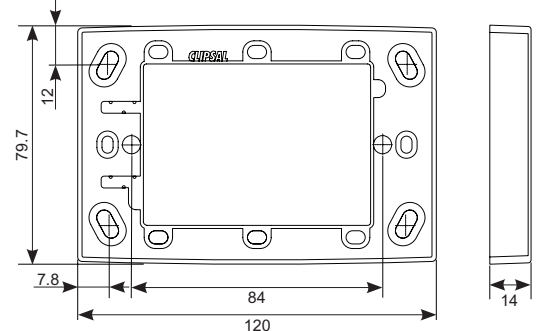
449ASD

Standard Series - Mounting flange, deep mount, 1-gang

Main	
Range	Clipsal
Commercial Reference	449ASD-WE 449ASD-BK
Product or Component Type	Mounting flange
Colour	White Electric (WE), Black (BK)
Provided Equipment	Mounting flange, fixing screws
Complementary	
Product Compatibility	Mounts any accessory with 84 mm mounting centres (Iconic and Pro Series may have over-hang from the grid plate)
Number of Gangs	1
Screw Thread Type	Metal insert
Material	PVC (Polyvinyl Chloride)
Product Weight	50 g
Dimensions (L x W x D)	119 x 79 x 14 mm
Mounting Centres	84 mm



Dimensions (mm)



Mounting Accessories

Mounting Blocks

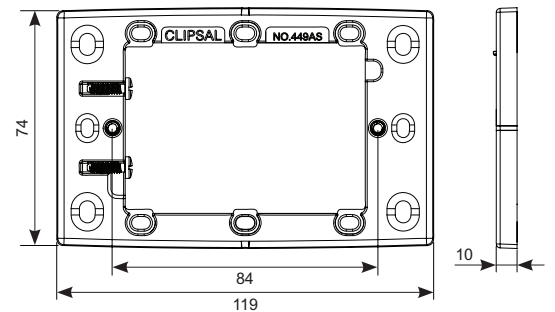
449AS-WE

Standard Series - Mounting flange, shallow mount, 1-gang

Main	
Range	Clipsal
Commercial Reference	449AS-WE
Product or Component Type	Mounting flange
Colour	White Electric (WE)
Provided Equipment	Mounting flange, fixing screws
Complementary	
Product Compatibility	Standard Series
Number of Gangs	1
Screw Thread Type	Metal insert
Material	PVC (Polyvinyl Chloride)
Dimensions (L × W × D)	119 × 74 × 10 mm
Mounting Centres	84 mm
Aperture Size	76 × 52 mm
Product Weight	36 g



Dimensions (mm)



450VC-WE

Standard Series - Mounting block suits vertical corrugated iron, 1-gang

Main	
Range	Clipsal
Commercial Reference	450VC-WE
Product or Component Type	Mounting block
Colour	White Electric (WE)
Provided Equipment	Mounting block
Complementary	
Product Compatibility	Mounts any accessory with 84 mm mounting centres (Iconic and Pro Series may have over-hang from the grid plate)
Number of Gangs	1
Screw Thread Type	Metal insert
Number of Mounting Screw Positions	4
Material	PC (Polycarbonate)
Product Weight	58 g
Dimensions (L × W × D)	117.8 × 86 × 30 mm
Mounting Centres	84 mm



Mounting Accessories

Mounting Blocks

70/1-WE

Standard Series - Mounting block, 1-gang, for architrave switch

Main	
Range	Clipsal
Commercial Reference	70/1-WE
Product or Component Type	Mounting block
Colour	White Electric (WE)
Provided Equipment	Mounting block, fixing screws
Complementary	
Number of Gangs	1
Screw Thread Type	Metal insert
Number of Mounting Screw Positions	2
Material	PVC (Polyvinyl Chloride)
Product Weight	24 g
Dimensions (L x W x D)	80 x 37 x 25 mm
Mounting Centres	55 mm



70/2-WE

Standard Series - Mounting block, 2-gang, for architrave switch

Main	
Range	Clipsal
Commercial Reference	70/2-WE
Product or Component Type	Mounting block
Colour	White Electric (WE)
Provided Equipment	Mounting block, fixing screws
Complementary	
Product Compatibility	32A-WE
Number of Gangs	2
Screw Thread Type	Metal insert
Number of Mounting Screw Positions	2
Material	PVC (Polyvinyl Chloride)
Product Weight	30 g
Dimensions (L x W x D)	90 x 37 x 25 mm
Mounting Centres	70 mm



Mounting Accessories

Mounting Blocks

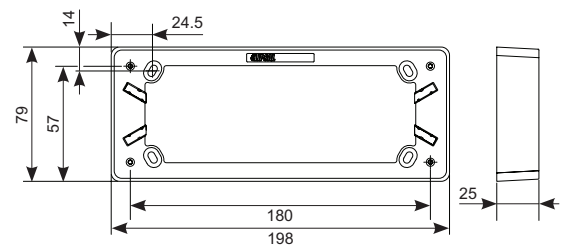
C2015D4MB-WE

C2000 Series - Mounting block to suit 4-gang outlet

Main	
Range	Clipsal
Commercial Reference	C2015D4MB-WE
Product or Component Type	Mounting block
Colour	White Electric (WE)
Provided Equipment	Mounting block
Complementary	
Product Compatibility	C2015D4
Number of Gangs	4
Screw Thread Type	Metal insert
Number of Mounting Screw Positions	4
Dimensions (L × W × D)	198 × 79 × 25 mm
Mounting Centres	155 and 50 mm
Product Weight	66 g



Dimensions (mm)



C2015D4P-WE

C2000 Series - Backing plate to suit C2015D4MB, 4-gang

Main	
Range	Clipsal
Commercial Reference	C2015D4P-WE
Product or Component Type	Backing plate
Colour	White Electric (WE)
Provided Equipment	Backing plate
Complementary	
Product Compatibility	C2015D4MB
Number of Gangs	4
Product Weight	39 g
Dimensions (L × W × D)	196 × 75 × 10 mm



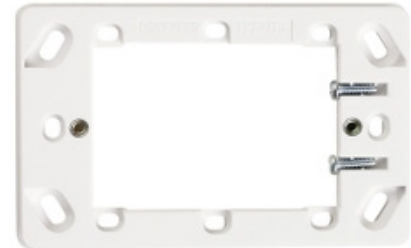
Mounting Accessories

Mounting Blocks

C2449ASD

Clipsal - Mounting flange to suit C2000 series, 1-gang

Main	
Range	Clipsal
Commercial Reference	C2449ASD-WE
Product or Component Type	Mounting flange
Colour	White Electric (WE)
Provided Equipment	Mounting flange, fixing screws
Complementary	
Product Compatibility	C2000 Series
Number of Gangs	1
Screw Thread Type	Metal insert
Material	PC (Polycarbonate)
Product Weight	48 g
Dimensions (L × W × D)	122 × 79 × 24 mm
Mounting Centres	84 mm



Mounting Accessories

Mounting Enclosures

223H-WE

2000 Series - Enclosure, weather protected, horizontal, 1-gang

Main	
Range	Clipsal
Commercial Reference	223H-WE
Product or Component Type	Enclosure
Colour	White Electric (WE)
Provided Equipment	Weather protected enclosure
Complementary	
Product Compatibility	Standard Series, 2000 Series
Number of Gangs	1
Device Mounting	Surface mount
Product Weight	118 g
Dimensions (L × W × D)	127 × 103 × 27 mm
Mounting Centres	84 mm
IP Rating	IP23



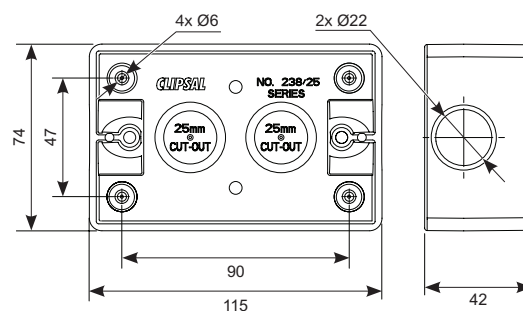
238/25

Clipsal - Mounting box with 25 mm end entries, 1-gang

Main		
Range	Clipsal	
Commercial Reference	238/25-WE	238/25-GY
Product or Component Type	Mounting box	
Colour	White Electric (WE), Grey (GY)	
Provided Equipment	Mounting box, fixing screws	
Complementary		
Product Compatibility	2000 Series, Classic Series	
Number of Gangs	1	
Screw Thread Type	Metal insert	
Number of Conduit Entries	2	
Device Mounting	Surface mount	
Material	Enclosure - PVC (Polyvinyl Chloride) Caps - PVC (Polyvinyl Chloride)	
Dimensions (L × W × D)	115 × 74 × 42 mm	
Mounting Centres	84 mm	
Product Weight	118 g	



Dimensions (mm)



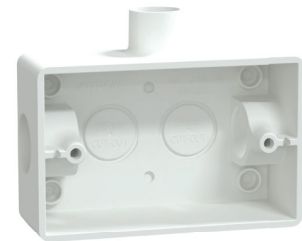
Mounting Accessories

Mounting Enclosures

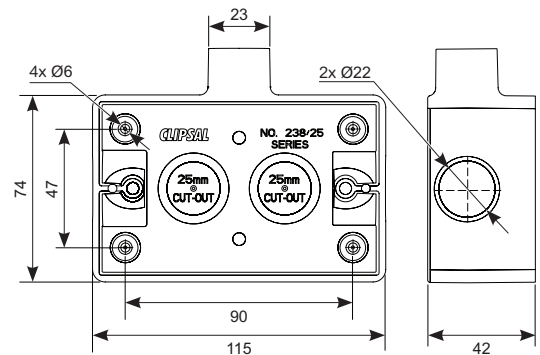
238A/25-WE

Clipsal - Mounting box with 25 mm entries, 1-gang

Main	
Range	Clipsal
Commercial Reference	238A/25-WE
Product or Component Type	Mounting box
Colour	White Electric (WE)
Provided Equipment	Mounting box, fixing screws
Complementary	
Product Compatibility	2000 Series, Classic Series
Number of Gangs	1
Screw Thread Type	Metal insert
Device Mounting	Surface mount
Material	PVC (Polyvinyl Chloride)
Product Weight	124 g
Dimensions (L x W x D)	115 x 74 x 42 mm
Mounting Centres	84 mm



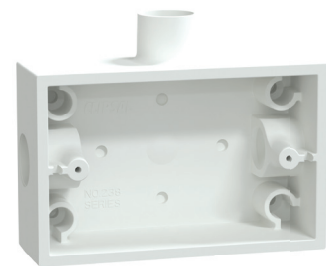
Dimensions (mm)



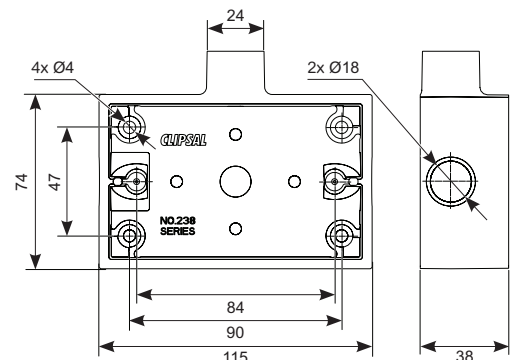
238A-WE

Clipsal - Mounting box with 20 mm end entries, 1-gang

Main	
Range	Clipsal
Commercial Reference	238A-WE
Product or Component Type	Mounting box
Colour	White Electric (WE)
Provided Equipment	Mounting box, fixing screws
Complementary	
Product Compatibility	2000 Series, Classic Series
Number of Gangs	1
Screw Thread Type	Metal inserts
Number of Conduit Entries	3
Device Mounting	Surface mount
Material	PVC (Polyvinyl Chloride)
Product Weight	140 g
Dimensions (L x W x D)	115 x 74 x 38 mm
Mounting Centres	84 mm



Dimensions (mm)



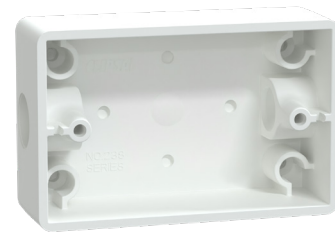
Mounting Accessories

Mounting Enclosures

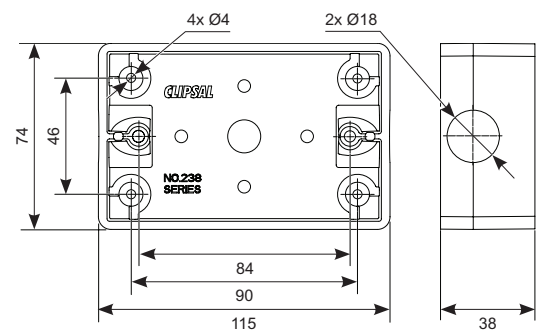
238

Clipsal - Mounting box with 20 mm end entries, 1-gang

Main			
Range	Clipsal		
Commercial Reference	238-WE	238-GY	238-BK
Product or Component Type	Mounting box		
Colour	White Electric (WE), Grey (GY), Black (BK)		
Provided Equipment	Mounting box, fixing screws		
Complementary			
Product Compatibility	2000 Series, Classic Series		
Number of Gangs	1		
Screw Thread Type	Metal insert		
Number of Conduit Entries	2		
Device Mounting	Surface mount		
Material	PVC (Polyvinyl Chloride)		
Dimensions (L x W x D)	115 x 74 x 38 mm		
Mounting Centres	84 mm		
Product Weight	125 g		



Dimensions (mm)



Mounting Accessories

Wall Box Metal

157/1

Clipsal - Wall boxes, metal, 1-gang

Main	
Range	Clipsal
Commercial Reference	157/1
Product or Component Type	Wall box
Complementary	
Product Compatibility	Stanard Series, 2000 Series, C2000 Series, Metal Plate Series
Number of Gangs	1
Mounting Orientation	Horizontal and vertical
Screw Thread Type	Sliding nuts
Suitable Wall Construction	Suits universal wall construction
Material	Electro-galvanised steel
Product Weight	142 g
Dimensions (L x W x D)	94 x 54 x 39 mm
Mounting Centres	84 mm



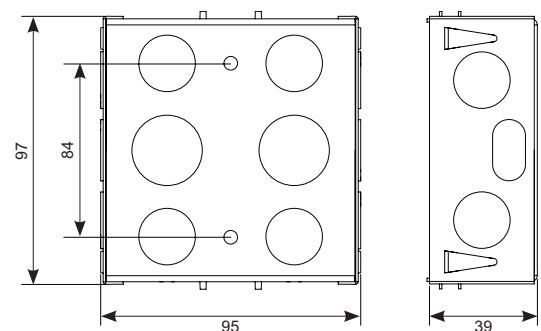
157/2

Clipsal - Wall boxes, metal, 2-gang

Main	
Range	Clipsal
Commercial Reference	157/2
Provided Equipment	Wall box
Complementary	
Number of Gangs	2
Mounting Orientation	Horizontal and vertical
Screw Thread Type	Sliding nuts
Suitable Wall Construction	Suits universal wall construction
Material	Electro-galvanised steel
Product Weight	222 g
Dimensions (L x W x D)	97 x 95 x 39 mm
Mounting Centres	84 and 46 mm



Dimensions (mm)



Mounting Accessories

Wall Box Metal

160

Clipsal - Wall boxes metal, poured concrete, 1-gang

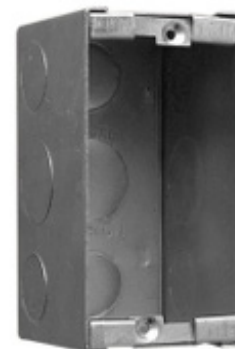
Main	
Range	Clipsal
Commercial Reference	160
Product or Component Type	Wall box
Complementary	
Product Compatibility	Stanard Series, 2000 Series, C2000 Series, Iconic, Pro Series, Metal Plate Series, Saturn
Number of Gangs	1
Mounting Orientation	Horizontal and vertical
Screw Thread Type	Sliding nuts
Number of Cable Entries	9
Suitable Wall Construction	Poured concrete (suits universal wall construction)
Material	Electro-galvanised steel
Product Weight	143 g
Dimensions (L × W × D)	97 × 50 × 39 mm
Mounting Centres	84 mm



164/1

Clipsal - Wall boxes metal, poured concrete, 1-gang, deep wide

Main	
Range	Clipsal
Commercial Reference	164/1
Product or Component Type	Wall box
Complementary	
Number of Gangs	1
Mounting Orientation	Horizontal and vertical
Screw Thread Type	Sliding nuts
Suitable Wall Construction	Poured concrete (suits universal wall construction)
Material	Electro-galvanised steel
Product Weight	143 g
Dimensions (L × W × D)	97 × 50 × 58 mm
Mounting Centres	84 mm



Mounting Accessories

Wall Box Metal

PDL140C

PDL - Flush box, concrete 50 mm deep, 1-gang

Main	
Range	PDL general accessories
Commercial Reference	PDL140C
Product or Component Type	Flush mounting box
Complementary	
Product Compatibility	Mounts any accessory with 84 mm mounting centres
Number of Gangs	1
Mounting Orientation	Horizontal and vertical
Screw Thread Type	Fixed nuts
Suitable Wall Construction	Wall, ceiling
Material	Electro-galvanised steel
Product Weight	212 g
Dimensions (L × W × D)	110 × 53 × 53 mm
Mounting Centres	84 mm



PDL141C

PDL - Flush box, concrete 92 mm deep, 1-gang

Main	
Range	PDL general accessories
Commercial Reference	PDL141C
Provided Equipment	Flush mounting box
Complementary	
Number of Gangs	1
Mounting Orientation	Horizontal and vertical
Suitable Wall Construction	Wall, ceiling
Material	Electro-galvanised steel
Product Weight	345 g
Dimensions (L × W × D)	110 × 53 × 92 mm
Mounting Centres	84 mm



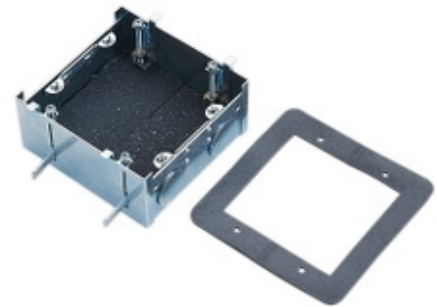
Mounting Accessories

Wall Box Fire Rated

157/2F

Clipsal - Wall box, 2-gang to suit 1 hour and 2 hours fire rated application

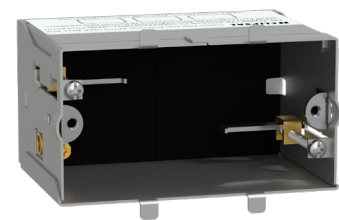
Main	
Range	Clipsal
Commercial Reference	157/2F
Product or Component Type	Wall box
Complementary	
Product Compatibility	1 hour and 2 hours fire rated applications
Number of Gangs	2
Mounting Orientation	Horizontal and vertical
Screw Thread Type	Sliding nuts
Number of Cable Entries	10
Suitable Wall Construction	Masonry walls
Material	Electro-galvanised steel
Product Weight	356 g
Dimensions (L × W × D)	97 × 94 × 47 mm
Mounting Centres	84 and 46 mm
Environment	
Fire Rating	1 hour and 2 hours applications
Acoustic Rating	Up to STC50



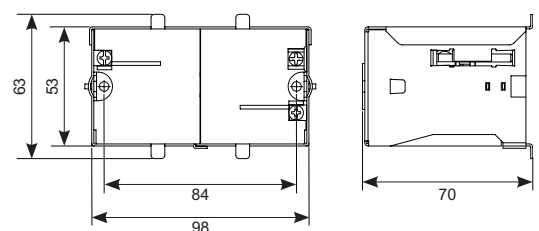
157MDF

Clipsal - Wall box, metal, deep fire rated, 1-gang

Main	
Range	Clipsal
Commercial Reference	157MDF
Product or Component Type	Wall box
Complementary	
Product Compatibility	Mounts any accessory with 84 mm mounting centres
Number of Gangs	1
Mounting Orientation	Horizontal and vertical
Screw Thread Type	Sliding nuts
Number of Cable Entries	21
Suitable Wall Construction	Masonry walls and fire rated plasterboard
Material	Electro-galvanised steel
Product Weight	230 g
Dimensions (L × W × D)	98 × 53 × 70 mm
Mounting Centres	84 mm
Standards	AS/NZS 60670:2021, AS/NZS 1530.4
Environment	
Fire Rating	1 hour and 2 hours applications
Acoustic Rating	Up to STC50



Dimensions (mm)



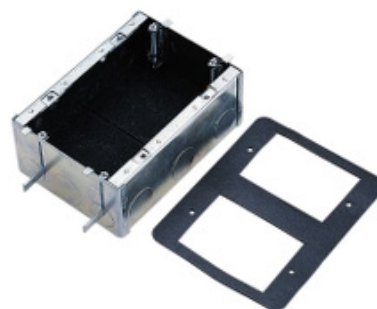
Mounting Accessories

Wall Box Fire Rated

2157/2F

2000 Series - Wall box, 2-gang suit 1 hour and 2 hours fire application

Main	
Range	Clipsal
Commercial Reference	2157/2F
Product or Component Type	Wall box
Complementary	
Product Compatibility	2000 Series - 1 hour and 2 hours fire rated applications
Number of Gangs	2
Mounting Orientation	Horizontal and vertical
Screw Thread Type	Sliding nuts
Suitable Wall Construction	Masonry walls
Material	Electro-galvanised steel
Product Weight	590 g
Dimensions (L × W × D)	134 × 97 × 58 mm
Mounting Centres	84 and 72 mm
Environment	
Fire Rating	1 hour and 2 hours applications
Acoustic Rating	Up to STC50



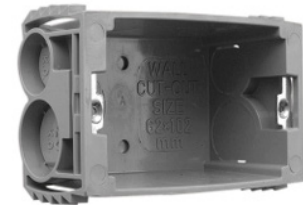
Mounting Accessories

Wall Box Plastic

157/1P

Clipsal - Wall box plastic, 1-gang with sliding nuts

Main	
Range	Clipsal
Commercial Reference	157/1P
Product or Component Type	Wall box
Complementary	
Product Compatibility	Standard Series, 2000 Series, C2000 Series, Metal Plate Series
Number of Gangs	1
Mounting Orientation	Horizontal and vertical
Screw Thread Type	Sliding nuts
Number of Cable Entries	5
Suitable Wall Construction	Suits universal wall construction
Material	Plastic
Product Weight	47 g
Dimensions (L × W × D)	97 × 57 × 45 mm
Mounting Centres	84 mm



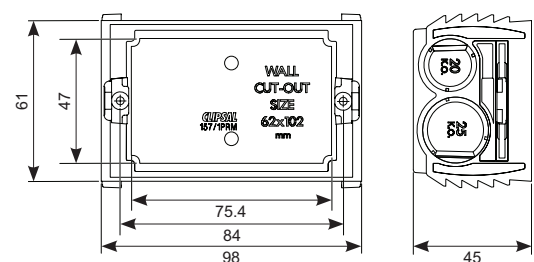
157/1PRM

Clipsal - Wall box plastic, 1-gang with sliding recessed nuts

Main	
Range	Clipsal
Commercial Reference	157/1PRM
Product or Component Type	Wall box
Complementary	
Product Compatibility	84 mm centred products
Number of Gangs	1
Mounting Orientation	Horizontal and vertical
Screw Thread Type	Sliding nuts
Number of Cable Entries	12
Suitable Wall Construction	Suits universal wall construction
Material	Plastic
Product Weight	40 g
Dimensions (L × W × D)	98 × 61 × 45 mm
Mounting Centres	84 mm



Dimensions (mm)



Mounting Accessories

Wall Box Plastic

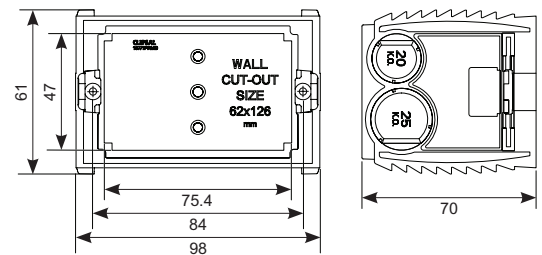
157/1PRMD

Clipsal - Moulded deep plastic wall box, 1-gang, sliding nuts

Main	
Range	Clipsal
Commercial Reference	157/1PRMD
Product or Component Type	Wall box
Complementary	
Product Compatibility	Standard Series, 2000 Series, C2000 Series, iconic, pro series, saturn, metal plate series
Number of Gangs	1
Mounting Orientation	Horizontal and vertical
Screw Thread Type	Sliding nuts
Number of Cable Entries	12
Suitable Wall Construction	Suits universal wall construction
Material	Plastic
Product Weight	86 g
Dimensions (L x W x D)	98 x 61 x 70 mm
Mounting Centres	84 mm
Wall Cut-out (L x W)	62 x 102 mm



Dimensions (mm)



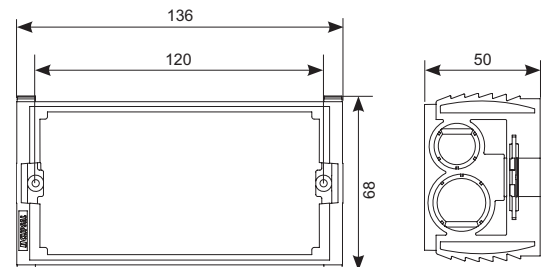
157PRM4

Clipsal - Wall box 120 mm recessed mount, 4-gang

Main	
Range	Clipsal
Commercial reference	157PRM4
Product type	4-gang wall box
Colour	Black
Assembly type	Component
Complementary	
Material	Plastic
Surface treatment	Galvanized
Installation orientation	Horizontal only
Mounting type	Screws (not supplied)
Mounting centers	120 mm
Screwdriver shape	Philips No. 2 (PH2), square drive No. 1 (SQ1)
Net weight	87 g
Dimensions (H x W x D)	136 x 68 x 50 mm



Dimensions (mm)



Mounting Accessories

Wall Box Plastic

257D-GY

2000 Series - Moulded plastic wall box, 1-gang, deep type

Main	
Range	Clipsal
Commercial Reference	257D-GY
Product or Component Type	Wall box
Complementary	
Number of Gangs	1
Mounting Orientation	Horizontal and vertical
Screw Thread Type	Metal insert
Number of Cable Entries	16
Suitable Wall Construction	Suits universal wall construction
Material	Plastic
Product Weight	115 g
Dimensions (L × W × D)	94 × 58 × 61 mm
Mounting Centres	84 mm



3157/4PRM

Clipsal Iconic - Quad socket plastic wall box, 1-gang

Main	
Range	Clipsal
Commercial Reference	3157/4PRM
Product or Component Type	Wall box
Complementary	
Number of Gangs	1
Mounting Orientation	Horizontal and vertical
Screw Thread Type	Split nuts
Number of Cable Entries	16
Suitable Wall Construction	Suits universal wall construction
Material	PC (Polycarbonate)
Product Weight	57 g
Dimensions (L × W × D)	98 × 61 × 45 mm
Mounting Centres	179.8 mm
Standards	AS/NZS 60670.1



Mounting Accessories

Shrouds

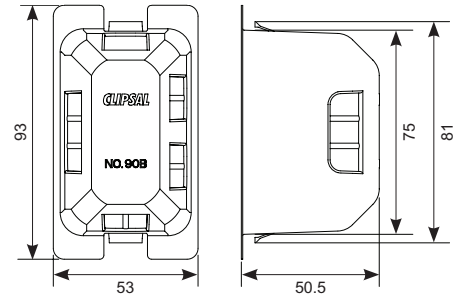
90B-BK

Clipsal - 900 series, insulating shroud, standard size

Main	
Range	Clipsal
Commercial Reference	90B-BK
Product or Component Type	Shroud
Complementary	
Product Compatibility	Suits standard mounting accessories
Insulation Requirements	Meets double insulation requirements
Material	PA6 (Polyamide 6)
Product Weight	14 g
Dimensions (L x W x D)	75 x 47 x 50.5 mm



Dimensions (mm)



90BD-BK

Clipsal - 900 series, insulating shroud, standard size, deep type

Main	
Range	Clipsal
Commercial Reference	90BD-BK
Product or Component Type	Shroud
Complementary	
Product Compatibility	Suits standard mounting accessories
Insulation Requirements	Meets double insulation requirements
Material	PA66 (Polyamide 6.6)
Product Weight	23 g
Dimensions (L x W x D)	74 x 49 x 64 mm



Mounting Accessories

Shrouds

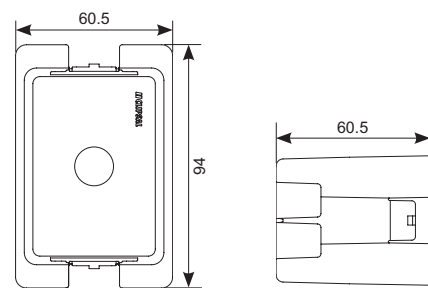
90BD43-BK

Clipsal - Insulating deep shroud 84 mm, 3-gang

Main	
Range	Clipsal
Commercial reference	90BD3-BK
Colour	Black
Product type	3-gang insulating shroud
Assembly type	Complete product
Complementary	
Material	Plastic
Installation orientation	Horizontal only
Mounting type	Clips
Mounting centers	84 mm
Screwdriver shape	Philips No. 2 (PH2), square drive No. 1 (SQ1)
Net weight	25 g
Dimensions (H × W × D)	94 × 60.5 × 60.5 mm



Dimensions (mm)



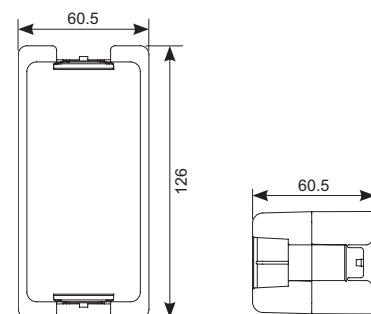
90BD4-BK

Clipsal - Insulating deep shroud 120 mm, 4-gang

Main	
Range	Clipsal
Commercial reference	90BD4-BK
Colour	Black
Product type	4-gang insulating shroud
Assembly type	Complete product
Complementary	
Material	Plastic
Installation orientation	Horizontal only
Mounting type	Clips
Mounting centers	120 mm
Screwdriver shape	Philips No. 2 (PH2), square drive No. 1 (SQ1)
Net weight	28 g
Dimensions (H × W × D)	126 × 60.5 × 60.5 mm



Dimensions (mm)



Mounting Accessories

Shrouds

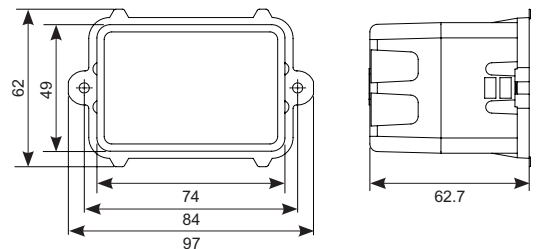
90BI-BK

Clipsal - 900 series, insulating shroud, standard size, intermediate

Main	
Range	Clipsal
Commercial Reference	90BI-BK
Product or Component Type	Shroud
Complementary	
Insulation Requirements	Meets double insulation requirements
Material	PA66 (Polyamide 6.6)
Product Weight	18 g
Dimensions (L × W × D)	97 (internal 74 mm) × 62 (internal 49 mm) × 63 mm
Mounting Centres	84 mm



Dimensions (mm)



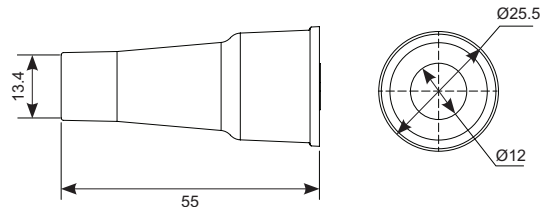
90F-BK

Clipsal - 900 series, insulating shroud, standard size, for 30 series

Main	
Range	Clipsal
Commercial Reference	90F-BK
Product or Component Type	Shroud
Complementary	
Product Compatibility	Fits 20 mm Ø equipment (suits 30 series mechanisms)
Insulation Requirements	Improves double insulation requirements
Suitable Cable Sizes	Accepts 2 twin 1.5 mm ² insulated and sheathed cables
Material	PVC (Polyvinyl Chloride)
Product Weight	6 g
Dimensions (Ø × D)	25.5 × 55 mm



Dimensions (mm)



Mounting Accessories

Shrouds

90FS

Clipsal - 900 series, flexible shroud, standard size, for 30 series square base

Main	
Range	Clipsal
Commercial Reference	90FS-BK
Product or Component Type	Shroud
Complementary	
Product Compatibility	Suits 30 Series square based mechanisms
Insulation Requirements	Improves double insulation requirements
Material	PVC (Polyvinyl Chloride)
Product Weight	13 g
Dimensions (L x W x D)	30 x 28 x 51 mm



Plugs, Sockets, and Inlets



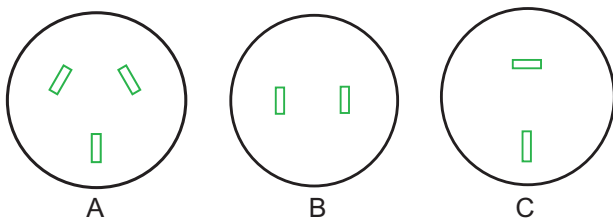
Plugs, Sockets, and Inlets

Sockets

Front Connecting Surface Sockets

Main				
Range	Clipsal			
Product Type	Socket			
Colour	White Electric (WE), Brown (BR)			
Complementary				
Commercial Reference	402-WE	402/32-WE	412-WE	412UA-WE 412UA-BR
Configuration	B	C	A	
Rated Current	10 A	15 A	10 A	
Mounting Centres	28 mm apart	35...38 mm		
Conductor Size	3 x 2.5 mm ²	4 x 2.5 mm ²	3 x 2.5 mm ²	
Rated Voltage	250 V			
Cable Core	2C		3C	
Phase	Single			
Dimensions (Ø × D)	45 × 28 mm	47 × 28 mm		

Configurations



Note: Product may vary based on commercial reference.

Plugs, Sockets, and Inlets

Sockets

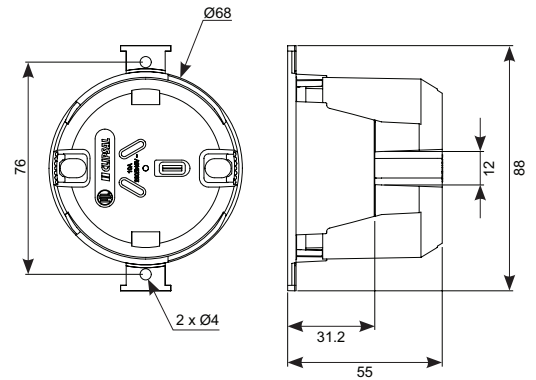
413E-WE

Clipsal - Standard series, single socket outlet, 3-pin, surface mount, 4 terminal

Main	
Range	Clipsal
Commercial Reference	413E-WE
Product or Component Type	Socket
Colour	White Electric (WE)
Electrical Rating	10 A, 230...240 V AC, 50 Hz
Complementary	
Device Mounting	Surface
Number of Power Socket Outlets	1
Connection Terminals	1 looping terminal
Pin Type	3-pin
Wire Stripping Length	16 mm
Material	Plastic
Construction	PC
Fixing Mode	Clipped OR Screwed
Terminal Capacity	Up to 4 × 2.5 mm ² cable Up to 3 × 4.0 mm ² cable
Terminal Type	Floating Wrapper
Dimensions (Ø × H × W)	68 × 55 × 88 mm
Mounting Centres	52 mm
Screwdriver	Philips No. 2 (PH2), square drive No. 1 (SQ1)
Product Weight	80 g
Standards	AU/NZ 3112:2017
Environment	
IP Rating	IP2X when installed on a 240 Series Junction Box
Product Certification	RCM



Dimensions (mm)



Plugs, Sockets, and Inlets

Sockets

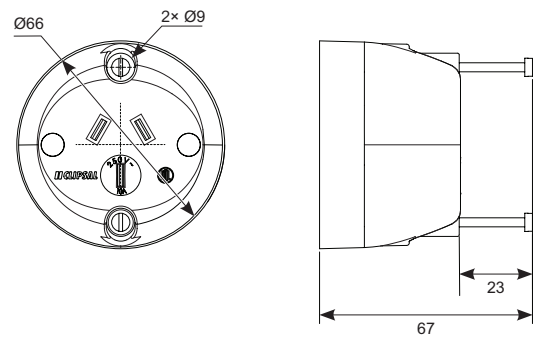
413F-WE

Clipsal - Standard series, single socket outlet, 3-pin, surface mount

Main	
Range	Clipsal
Commercial Reference	413F-WE
Product or Component Type	Socket
Colour	White Electric (WE)
Electrical Rating	10 A, 250 V AC
Complementary	
Device Mounting	Surface
Connection Terminals	1 looping terminal
Pin Type	3-pin
Material	Plastic
Dimensions (Ø × D)	66 × 46 mm
Mounting Centres	50 mm apart
Product Weight	68 g
Standards	AS/NZS 3112 AS 3100 AS 3109
Environment	
Product Certification	RCM



Dimensions (mm)



Plugs, Sockets, and Inlets

Sockets

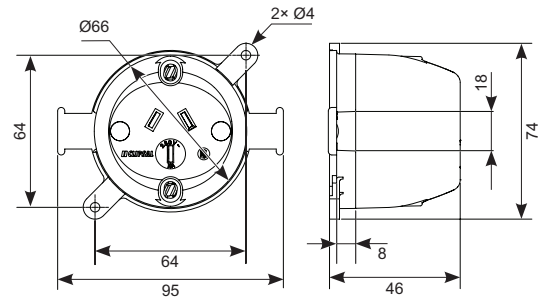
413L-WE

Clipsal - Standard series, single socket outlet, 3-pin, surface mount

Main	
Range	Clipsal
Commercial Reference	413L-WE
Product or Component Type	Socket
Colour	White Electric (WE)
Electrical Rating	10 A, 250 V AC
Complementary	
Device Mounting	Surface
Number of Power Socket Outlets	1
Connection Terminals	1 looping terminal
Pin Type	3-pin
Material	Plastic
Dimensions (Ø × D)	66 × 46 mm
Mounting Centres	50 mm apart
Product Weight	70 g
Standards	AS/NZS 3112 AS 3100 AS 3109
Environment	
Product Certification	RCM



Dimensions (mm)



Plugs, Sockets, and Inlets

Sockets

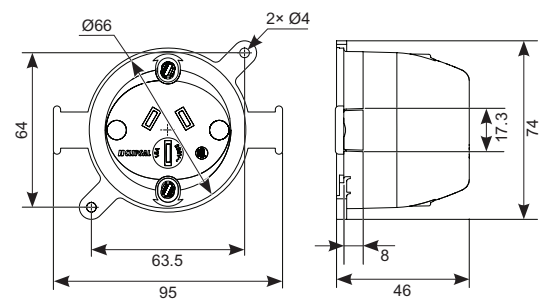
413/15-WE

Clipsal - Standard series, single socket outlet, 3-pin, surface mount

Main	
Range	Clipsal
Commercial Reference	413/15-WE
Product or Component Type	Socket
Colour	White Electric (WE)
Electrical Rating	15 A, 250 V AC
Complementary	
Device Mounting	Surface
Pin Type	3-pin
Material	Plastic
Dimensions (Ø × D)	66 × 46 mm
Mounting Centres	50 mm apart
Product Weight	58 g
Standards	AS/NZS 3112 AS 3100 AS 3109
Environment	
Product Certification	RCM



Dimensions (mm)



Plugs, Sockets, and Inlets

Sockets

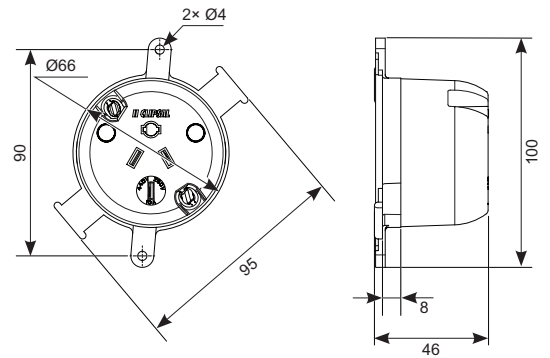
413/4P-WE

Clipsal - Standard series, single socket outlet, 4-pin, surface mount

Main	
Range	Clipsal
Commercial Reference	413/4P-WE
Product or Component Type	Socket
Colour	White Electric (WE)
Electrical Rating	10 A, 250/440 V AC
Complementary	
Device Mounting	Surface
Number of Power Socket Outlets	1
Connection Terminals	1 looping terminal
Pin Type	4-pin
Material	Plastic
Dimensions (Ø × D)	66 × 46 mm
Mounting Centres	50 mm apart
Product Weight	85 g
Standards	AS/NZS 3112 AS 3100 AS 3109
Environment	
Product Certification	RCM



Dimensions (mm)



Plugs, Sockets, and Inlets

Sockets

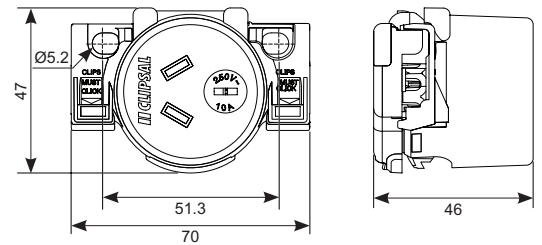
413QC-WE

Clipsal - Single socket outlet, 3-pin, quick connect, surface mount

Main	
Range	Clipsal
Commercial Reference	413QC-WE
Product or Component Type	Socket
Colour	White Electric (WE)
Electrical Rating	10 A, 250 V AC
Complementary	
Device Mounting	Surface
Pin Type	3-pin
Material	Plastic
Dimensions (L × W × D)	70 × 47 × 46 mm
Mounting Centres	50 mm apart
Product Weight	54 g
Standards	AS/NZS 3112 AS 3100 AS 3109
Environment	
Product Certification	RCM



Dimensions (mm)



Plugs, Sockets, and Inlets

Sockets

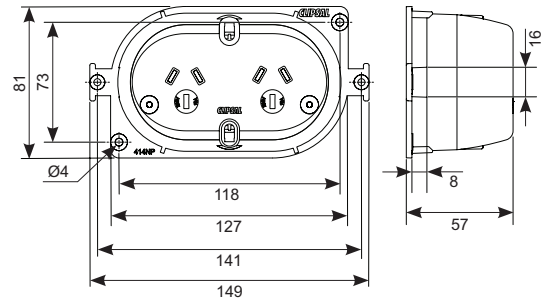
414-WE

Clipsal - Standard series, twin socket outlet, 3-pin, surface mount

Main	
Range	Clipsal
Commercial Reference	414-WE
Product or Component Type	Socket
Colour	White Electric (WE)
Electrical Rating	10 A, 250 V AC
Complementary	
Device Mounting	Surface
Number of Power Socket Outlets	1
Connection Terminals	1 looping terminal
Pin Type	3-pin
Material	Plastic
Dimensions (L x W x D)	72 x 65 x 63 mm
Mounting Centres	50 mm apart
Product Weight	70 g
Standards	AS/NZS 3112 AS 3100 AS 3109
Environment	
Product Certification	RCM



Dimensions (mm)



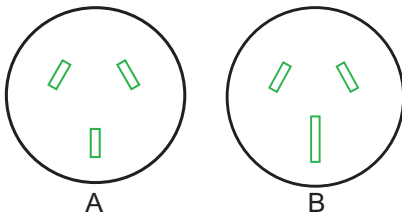
Plugs, Sockets, and Inlets

Sockets

Unswitched Sockets

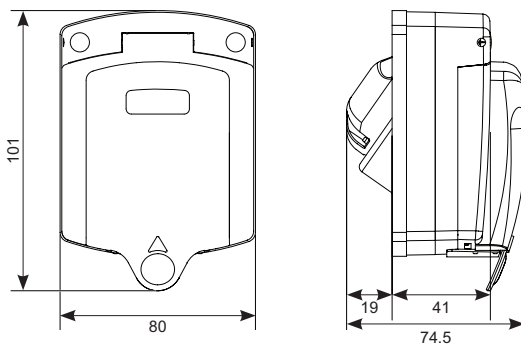
Main					
Range	Clipsal				
Product Type	Socket				
Colour	White Electric (WE), Black (BK)				
Complementary					
Commercial Reference	415-WE	415VF-WE 415VF-BK	415VF15-WE	415/15-WE	415/15LB-WE
Configuration	A			B	
Rated Current	10 A		15 A		
Mounting Centres	84 mm	76 × 65 mm		84 mm	
Performance	Ordinary		Heavy	Ordinary	
Conductor Size	2.5 mm ²				
Rated Voltage	250 V				
Cable Core	2C + E				
Phase	Single				
Dimensions (L × W × D)	94 × 42 × 27 mm	101 × 80 × 31 mm		94 × 42 × 27 mm	

Configurations



Note: Product may vary based on commercial reference.

Dimensions (mm)



415VF-WE/BK and 415VF15-WE

Note: Please use the above drawing as a reference all other part numbers.

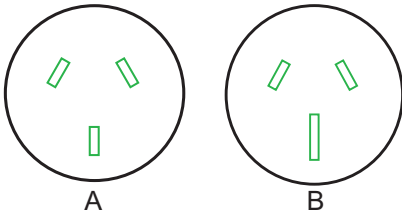
Plugs, Sockets, and Inlets

Sockets

Automatic Switched Sockets

Main						
Range	Clipsal					
Product Type	Socket					
Colour	White Electric (WE)					
Complementary						
Commercial Reference	10MD15SLB-WE	10MD20LB-WE	10MDP-WE	10MDSL-WE 10MDLB-WE	10MLB-WE	10MP-WE
Configuration	B			A		
Rated Current	15 A	20 A	10 A			
Mounting Centres	50 mm	50 mm	84 mm	50 mm	84 mm	
Conductor Size	2.5 mm ²					
Rated Voltage	250 V					
Cable Core	2C + E					
Phase	Single					
Dimensions (L × W × D)	60 × 42 × 33 mm		43 × 42 × 33 mm	60 × 42 × 33 mm	97 × 43 × 29 mm	43 × 42 × 33 mm

Configurations



Note: Product may vary based on commercial reference.

Plugs, Sockets, and Inlets

Sockets

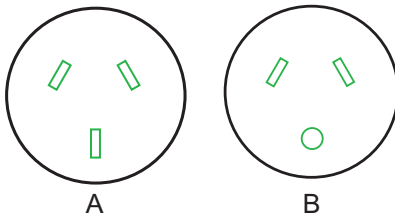
Rear Connecting Sockets, suits round junction box

Main		
Range	Clipsal	
Product Type	Socket	
Colour	White Electric (WE)	
Complementary		
Commercial Reference	426-WE	426L-WE
Configuration	A	B
Rated Current	10 A	
Mounting Centres	50 mm	
Conductor Size	4 × 2.5 mm ²	
Rated Voltage	250 V	
Cable Core	2C + E	
Phase	Single	
Dimensions (Ø × D)	66 × 24 mm	



Note: Product may vary based on commercial reference.

Configurations



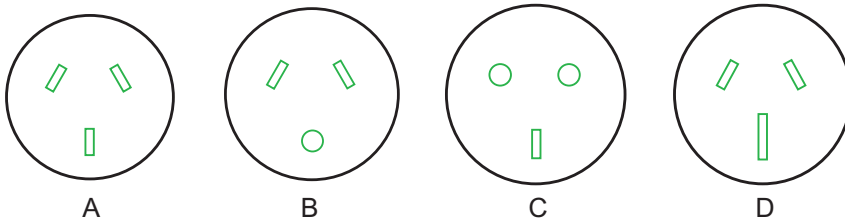
Plugs, Sockets, and Inlets

Plugs

Flexible Plugs

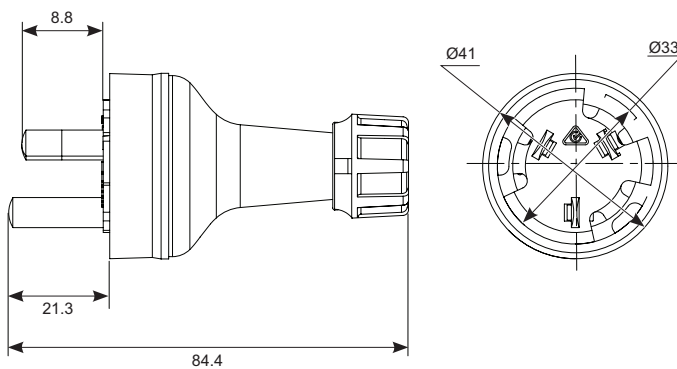
Main									
Range	Clipsal								
Product Type	Plug								
Colour	White Electric (WE), Black (BK), Transparent (TR)								
Complementary									
Commercial Reference	439S-WE 439S-BK 439S-TR 439SN-TR	439SL-TR	439SHD-TR	439SLHD-TR	439SXHD-TR	439SZ-TR	439/110-TR	439S15-TR	439S15HD-TR
Configuration	A	B	A	B	A	A	C	D	D
Performance	Ordinary		Heavy		Extra Heavy	Ordinary	Ordinary	Ordinary	Heavy
Cable Diameter (Ø)	8.7 mm		10.4 mm		12 mm	6.6 mm	8.7 mm		12 mm
Conductor Size	0.75 and 1 mm ²		1 mm ²		1.5 mm ²	0.75 mm ²	1 mm ²	1.5 mm ²	
Rated Current	10 A							15 A	
Rated Voltage	250 V								
Cable Core	2C + E								
Dimensions (Ø × D)	41 × 74 mm								

Configurations

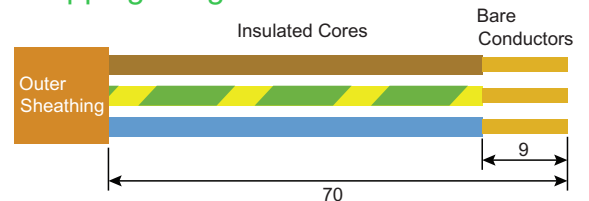


Note: Product may vary based on commercial reference.

Dimensions (mm)



Stripping Length



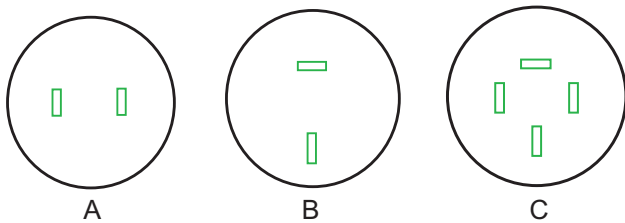
Plugs, Sockets, and Inlets

Plugs

Flexible Plugs

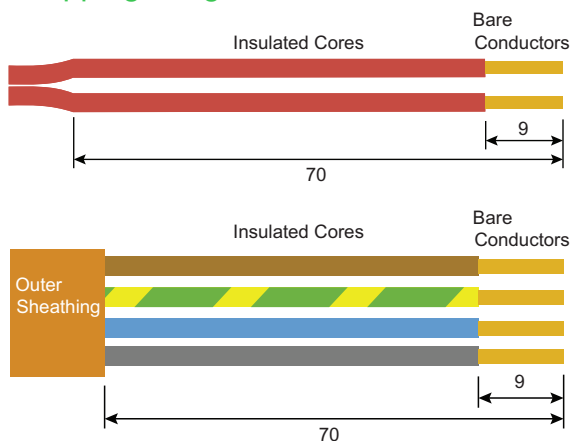
Main			
Range	Clipsal		
Product Type	Plug		
Colour	Transparent (TR)		
Complementary			
Commercial Reference	492-TR	492/32-TR	439/4-TR
Configuration	A	B	C
Rated Current	10 A	15 A	10 A
Rated Voltage	250 V	32 V	500 V
Cable Core	2C		3C + E
Performance	Ordinary		
Cable Diameter (Ø)	8.7 mm		
Conductor Size	0.75 and 1 mm ²		
Dimensions (Ø × D)	39 × 70 mm		40 × 67 mm

Configurations



Note: Product may vary based on commercial reference.

Stripping Length



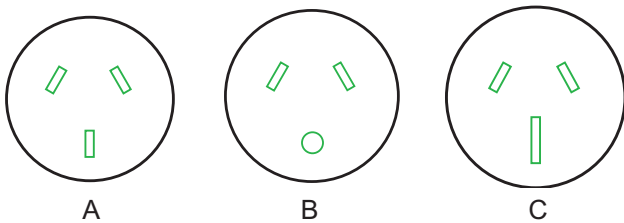
Plugs, Sockets, and Inlets

Plugs

Side Entry Plugs

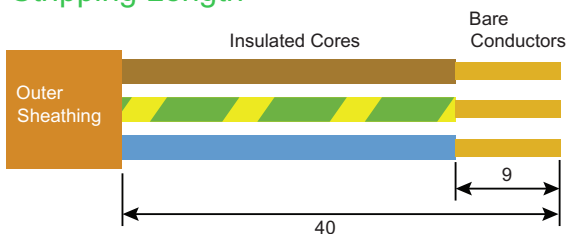
Main					
Range	Clipsal				
Product Type	Plug				
Colour	White Electric (WE), Black (BK), Transparent (TR)				
Complementary					
Commercial Reference	418S-WE 418S-BK 418S-TR	418SL-TR	418SUA-TR	418S15-TR	418S15-WE
Configuration	A	B	A	C	C
Conductor Size	1 mm ²			1.5 mm ²	
Rated Current	10 A			15 A	
Performance	Ordinary				
Rated Voltage	250 V				
Cable Core	2C + E				
Dimensions (L × W × D)	54 × 53 × 44 mm				

Configurations



Note: Product may vary based on commercial reference.

Stripping Length



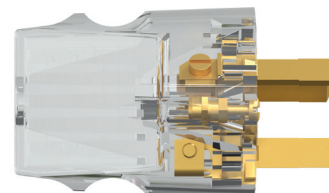
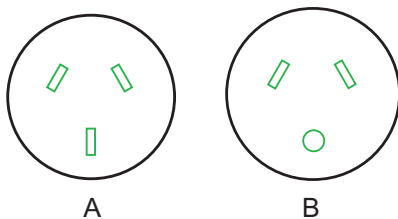
Plugs, Sockets, and Inlets

Plugs

Quick Connect Plugs

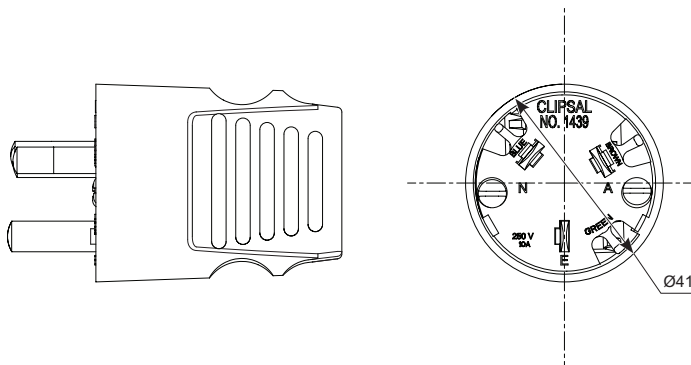
Main					
Range	Clipsal				
Product Type	Plug				
Colour	Transparent (TR)				
Complementary					
Commercial Reference	1439S-TR	1439/20-TR	1439SHD-TR	1439S15-TR	1439/4P-TR
Configuration	A				B
Rated Current	10 A	20 A	10 A	15 A	10 A
Conductor Size	1 mm ²	2.5 mm ²	1 mm ²	1.5 mm ²	
Performance	Ordinary		Heavy	Ordinary	
Cable Diameter (Ø)	8 mm	11 mm			10.5 mm
Rated Voltage	250 V				500 V
Cable Core	3C + E				4C + E
Dimensions (Ø × D)	41 × 74 mm				47 × 71 mm

Configurations

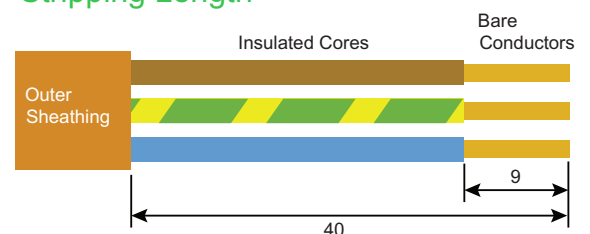


Note: Product may vary based on commercial reference.

Dimensions (mm)



Stripping Length



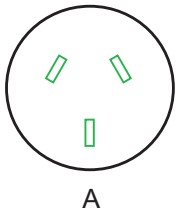
Plugs, Sockets, and Inlets

Plugs

Miscellaneous Plugs

Main					
Range	Clipsal				
Product Type	Plug				
Colour	White Electric (WE), Black (BK), Transparent (TR)				
Complementary					
Commercial Reference	461SUA-WE	463SUA-TR	463SUA-BK	463SAS-TR	800CL-WE
Configuration	A				–
Conductor Size	1 mm ²				4 mm ²
Rated Current	10 A				32 A
Performance	Ordinary				
Rated Voltage	250 V				
Cable Core	2C + E				
Dimensions (Ø × D)	Ø43 mm				3 × 2.4 × 1800 mm

Configurations



Note: Product may vary based on commercial reference.

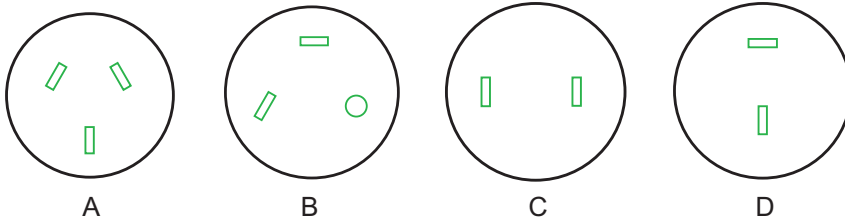
Plugs, Sockets, and Inlets

Extension Sockets

Flexible Extension Cords

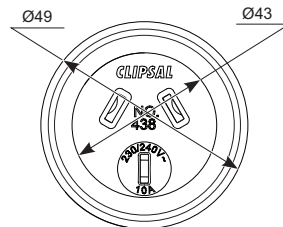
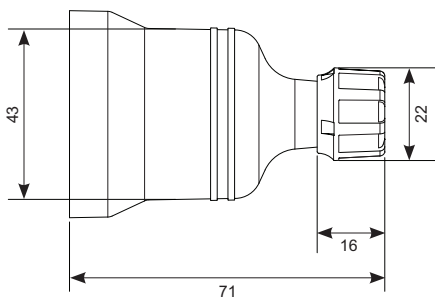
Main										
Range	Clipsal									
Product Type	Extension Sockets									
Colour	Transparent (TR)									
Complementary										
Commercial Reference	438/2-TR	438/32-TR	438-TR	438N-TR	438L-TR	438HD-TR	438XHD-TR	438S15-TR	438S15HD-TR	438/20-TR
Configuration	C	D	A		B	A				
Performance	Ordinary					Heavy		Ordinary	Heavy	Ordinary
Cable Diameter (Ø)	8.5 mm			7 mm	8.5 mm	10 mm	12 mm	10 mm	8 mm	12 mm
Conductor Size	1 mm ²	1.5 mm ²	0.75 and 1 mm ²	0.75 mm ²	1 mm ²	0.75 and 1 mm ²	1.5 mm ²	1.5 mm ²		2.5 mm ²
Rated Current	10 A	15 A	10 A	7.5 A	10 A			15 A		20 A
Rated Voltage	250 V									
Cable Core	2C + E									
Dimensions (Ø × D)	43 × 71 mm									

Configurations

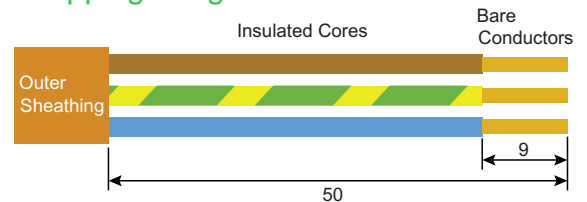


Note: Product may vary based on commercial reference.

Dimensions (mm)



Stripping Length



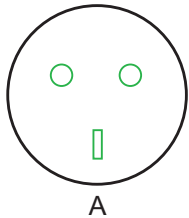
Plugs, Sockets, and Inlets

Pendant Sockets

Suspension Single Switch Socket

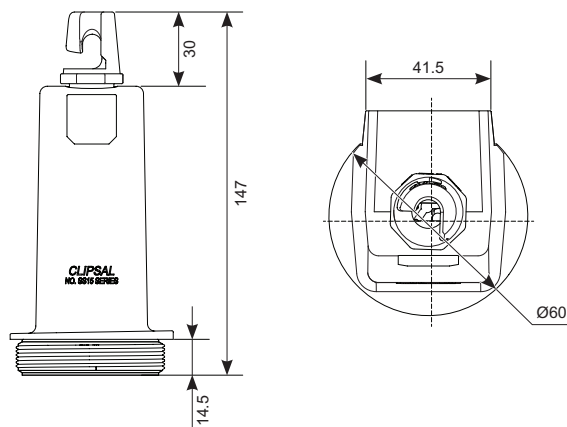
Main							
Range	Clipsal						
Product Type	Switched socket						
Colour	White Electric (WE), Grey(GY), Electric Orange(EO)						
Complementary							
Commercial Reference	SS15-WE	SS15-GY	SS15-EO	SS15N-GY	SS15N-EO	SS15/15-GY	SS15/15N-GY
Rated Current	10 A					15 A	
Configuration	A						
Conductor Size	1.5 mm ²						
Performance	Ordinary						
Cable Diameter (Ø)	10.5 mm						
Rated Voltage	250 V						
Phase	Single						
Cable Core	2C + E						
Dimensions (Ø × D)	60 × 147 mm						

Configurations

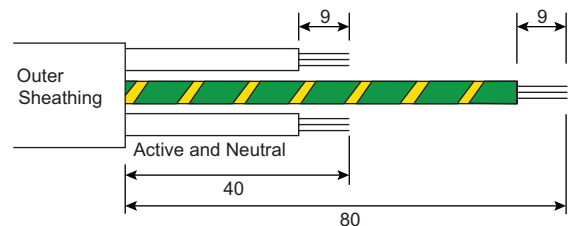


Note: Product may vary based on commercial reference.

Dimensions (mm)



Stripping Length



Plugs, Sockets, and Inlets

Socket Inlets

435A - 435A15

Clipsal - Socket inlet, 3-pin, 10/15 A, 250 V, back terminal cover

Main		
Range	Clipsal	
Commercial Reference	435A-BK	435A15-BK
Product or Component Type	Socket inlet, back terminal cover	
Colour	Black (BK)	
Fixing Mode	By screws	
Rated Current	10 A	15 A
Complementary		
Device Mounting	Recessed	
Number of Power Socket Inlets	1	
Mounting Centres	70 mm apart	
Connection Terminal	Screw terminal	
Number of Cable Entries	1	3
Pin Type	3-pin	
Wire Stripping Length	9 mm	
Material	PA (Polyamide) Polycarbonate	Plastic
Product Weight	75.5 g	77.2 g
Dimensions (Ø × D)	85 × 41 mm	
Standards	AS/NZS 3120 and AS/NZS 3100	–



Plugs, Sockets, and Inlets

Socket Inlets

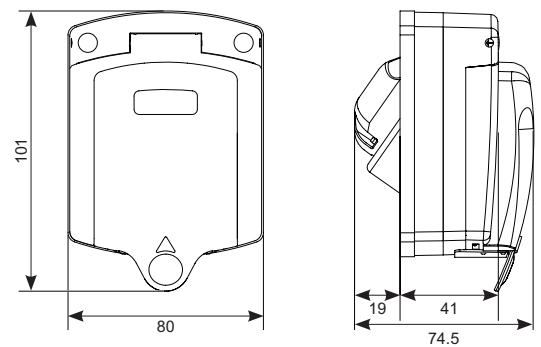
435VFS15

Clipsal - Socket inlet, 3-pin, 15 A, 250 V, weatherproof flap

Main		
Range	Clipsal	
Commercial Reference	435VFS15-WE	435VFS15-BK
Product or Component Type	Socket inlet	
Colour	White Electric (WE), Black (BK)	
Fixing Mode	By screws	
Rated Current	15 A	
Complementary		
Number of Power Socket Inlets	1	
Mounting Centres	76 and 65 mm	
Connection Terminal	Screw terminal	
Number of Cable Entries	3	
IP Degree	IP34	
Pin Type	3-pin	
Wire Stripping Length	9 mm	
Material	Plastic	
Product Weight	128 g	
Dimensions (L × W × D)	101 × 80 × 37 mm	



Dimensions (mm)





Cable Attachments

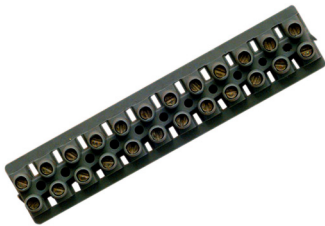


Cable Attachments

Terminals

Strip Connectors

Main							
Range	Clipsal						
Product Type	Terminals						
Complementary							
Commercial Reference	593/15	593/15PP	593/20	593/20PP	593/30	BP303	BP7
Rated Current	15 A		20 A		30 A	20 A	
Terminal Diameter	3.5 mm		3.3 mm		5.2 mm	4 mm	
Mounting Centres	10 mm		11 mm		13.5 mm	4 mm	10.6 mm
Clamping Connectivity	3 × 2.5 mm ²	3 × 1.5 mm ²	2 × 4 mm ²		3 × 4 mm ²	2 × 2.5 mm ²	3 × 6 mm ² or 4 × 2.5 mm ²
Rated Voltage	500 V AC						
Connector Type	Strip connector					Screw terminal	Strip connector
Dimensions (L × W × H)	118 × 25 × 15 mm		130 × 27 × 16.5 mm		159 × 32 × 19 mm	30 × 33 × 16 mm	136 × 25 × 17 mm
Entries	Double entry						
Number of Terminals	12					3	12



Cable Connectors

562A

Clipsal - 500 Series, cable connector, 2 screw, hexagonal, suits up to 3 × 6 mm² cables

Main	
Range	Clipsal
Commercial Reference	562A
Product or Component Type	Cable connector
Provided Equipment	2 x Screw
Complementary	
Connector Type	Screw terminals
Clamping Connection Capacity	3 × 6 mm ²
Cable Cross Section	6 mm ² fine stranded without cable end sleeve
Product Weight	8 g
Dimensions (H × W × L)	14 × 11 × 15 mm



Cable Attachments

Cable Connectors

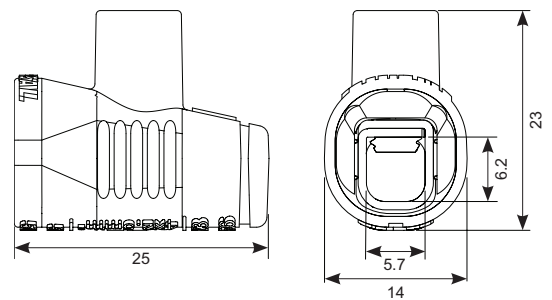
563B/100

Clipsal - 500 series, single cable connector, terminal 40 A, 100/box

Main	
Range	Clipsal
Commercial Reference	563B/100
Product or Component Type	Single cable connector
Provided Equipment	1 x Screw
Rated Current	40 A
Rated Voltage	500 V AC
Complementary	
Connector Type	Screw terminals
Clamping Connection Capacity	3 x 6 mm ² or 4 x 2.5 mm ²
Max. Cable Conductor	3 x 6 mm ² or 4 x 2.5 mm ² cables
Screw Type	No. 2 Philips or 563J/50 a No. 1 square
Screw Detail	M5 8 mm in length
Contacts Material	Brass
Material	Polypropylene: housing Zinc plated steel: screw
Product Weight	405 g
Dimensions (H x W x D)	23 x 25 x 14 mm
Standards	AS/NZS IEC 60998.2.1
Earth Compliant	AS/NZS 60998.2.1 (11.101), AS/NZS 3100 (5.3.3), AS/NZS 3000 (2.9.4.2, 3.7.2.11)
Environmental	PVC free
Rated Temperature	-10...40 °C



Dimensions (mm)



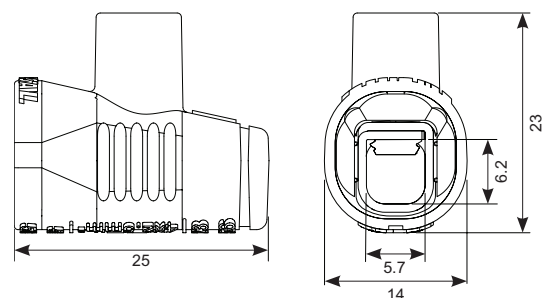
563J/50

Clipsal - 500 Series, single cable connector terminal 40 A, 50/jar

Main	
Range	Clipsal
Commercial Reference	563J/50
Product or Component Type	Single cable connector
Provided Equipment	1 x Screw
Rated Current	40 A
Rated Voltage	500 V AC
Complementary	
Connector Type	Screw terminals
Clamping Connection Capacity	3 x 6 mm ² or 4 x 2.5 mm ²
Max. Cable Conductor	3 x 6 mm ² or 4 x 2.5 mm ² cables
Screw Type	No. 2 Philips or 563J/50 a No. 1 square
Screw Detail	M5 8 mm in length
Contacts Material	Zinc plated steel
Material	Polypropylene: housing Zinc plated steel: screw
Product Weight	228 g
Dimensions (H x W x L)	23 x 25 x 14 mm
Standards	AS/NZS IEC 60998.2.1
Earth Compliant	AS/NZS 60998.2.1 (11.101), AS/NZS 3100 (5.3.3), AS/NZS 3000 (2.9.4.2, 3.7.2.11)
Rated Temperature	-10...40 °C



Dimensions (mm)



Cable Attachments

Cable Connectors

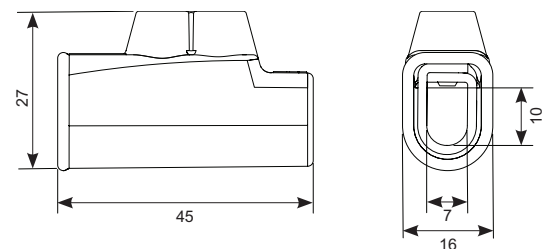
563K16

Clipsal - 500 Series, cable connector, two screws, clear insulated, 63 A

Main	
Range	Clipsal
Commercial Reference	563K16
Product or Component Type	Single cable connector
Provided Equipment	2 x Screw
Rated Current	63 A
Rated Voltage	415 V AC
Complementary	
Connector Type	Screw terminals
Clamping Connection Capacity	2 × 16 mm ² cables
Cable Cross Section	16 mm ² fine stranded without cable end sleeve
Contacts Material	Brass
Material	Plastic: housing
Product Weight	22 g
Dimensions (H × W × D)	27 × 45 × 16 mm



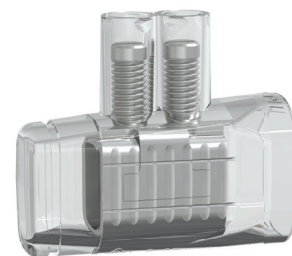
Dimensions (mm)



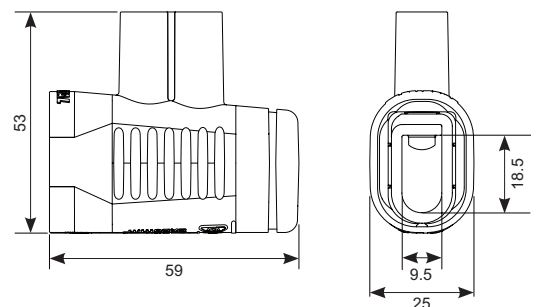
563K35

Clipsal - 500 Series, cable connector, two screw, clear insulated, 80 A

Main	
Range	Clipsal
Commercial Reference	563K35
Product or Component Type	Cable connector
Provided Equipment	2 x Screw
Rated Current	80 A
Rated Voltage	415...500 V AC
Complementary	
Connector Type	Screw terminals
Clamping Connection Capacity	2 x 35 mm ² cables
Cable Cross Section	25...35 mm ² solid or flexible 2 without cable end sleeve
Contacts Material	Brass
Material	Polypropylene: housing Zinc plated steel: screw
Product Weight	64 g
Dimensions (H × W × D)	53 × 25 × 59 mm
Standards	AS/NZS IEC 60998.2.1



Dimensions (mm)



Cable Attachments

Cable Connectors

563L2

Clipsal - 500 Series, cable connector, 1 screw, extended

Main	
Range	Clipsal
Commercial Reference	563L2
Product or Component Type	Cable connector
Provided Equipment	2 x Screw
Complementary	
Connector Type	Screw terminals
Clamping Connection Capacity	3 x 6 mm ² cables
Cable Cross Section	6 mm ² fine stranded without cable end sleeve
Contacts Material	Brass
Material	Cover - PP (Polypropylene) Terminal - Brass
Product Weight	20 g
Dimensions (H x W x L)	21.1 x 14.7 x 54.3 mm



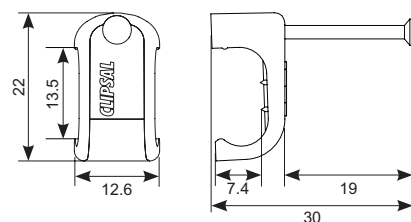
Cable Clips

Manufactured in hardened PVC to firmly secure cables, while the nails are made from high-quality steel to stay fixed in both hard and soft woods, ensuring secure cable installation.

Main									
Range	Clipsal								
Product Type	Cable clip								
Colour	White								
Complementary									
Commercial Reference	564/0	564/0BB	564/0BKT	564/1	564/1BB	564/1BKT	564/2	564/3	564/4
Cable Core	3 core			3 core and 2 core		3 core			2 core
Cable Size	1 and 1.5 mm ²		1.5 mm ²	2.5 and 4 mm ²		2.5 mm ²	4 mm ²	6 mm ²	16 mm ²
Quantity	100/Box	6000/Bulk Bin	700/Bucket	100/Box	5000/Bulk Bin	500/Bucket	100/Box		
Mounting	Nail								
Material	Plastic								



Dimensions (mm)



Cable Attachments

Pin Clips

Clipsal brass Pin Clips are used to secure cables to timber rafters or joists. Sold in packs of 200, there are a number of sizes available. To determine the right size, measure the cable's circumference and add 20% for easier installation.

Main					
Range	Clipsal				
Product Type	Pin clip				
Complementary					
Commercial Reference	564PC1	564PC2	564PC3	564PC4	564PC5
Length	38 mm	44 mm	51 mm	57 mm	67 mm
Quantity	200/Box				
Mounting	Screw				
Material	Brass				



Grommets and Glands

Molded Grommets

Conduit glands are used when connecting corrugated conduit to an outlet that requires a thread and lock ring.

Main						
Range	Clipsal					
Product Type	Grommets					
Complementary						
Commercial Reference	567/16	567/19	567/20	567/25.5	567/32	568/20
Inside Diameter	12.7 mm	16 mm		22.2 mm	28.5 mm	–
Hole Size	16 mm	19 mm	20 mm	25.5 mm	32 mm	20 mm



Cable Attachments

Grommets and Glands

282/20

Clipsal - Cable management, cable gland - non metallic

Main	
Range	Clipsal
Commercial Reference	282/20-BK
Product or Component Type	Cable gland
Complementary	
Cable Diameter	5.9...12 mm
Thread	M20
Material	Plastic
Product Weight	16 g
Environment	
IP Rating	IP56





Tools and Testers

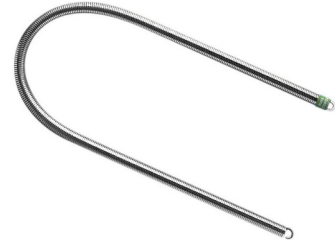


Tools and Testers

Conduit Bending Springs

The easiest way to bend or set small bore conduit is with an internal bending spring. Simply insert the relevant spring into the conduit and bend around your knee to the desired angle. It is often necessary to overbend to allow for creepage.

Main				
Range	Clipsal			
Product Type	Bending springs			
Complementary				
Commercial Reference	266HD20	266HD25	266MD20	266MD25
Suitable Tube Diameter	20 mm	25 mm	20 mm	25 mm
Performance	Heavy		Medium	



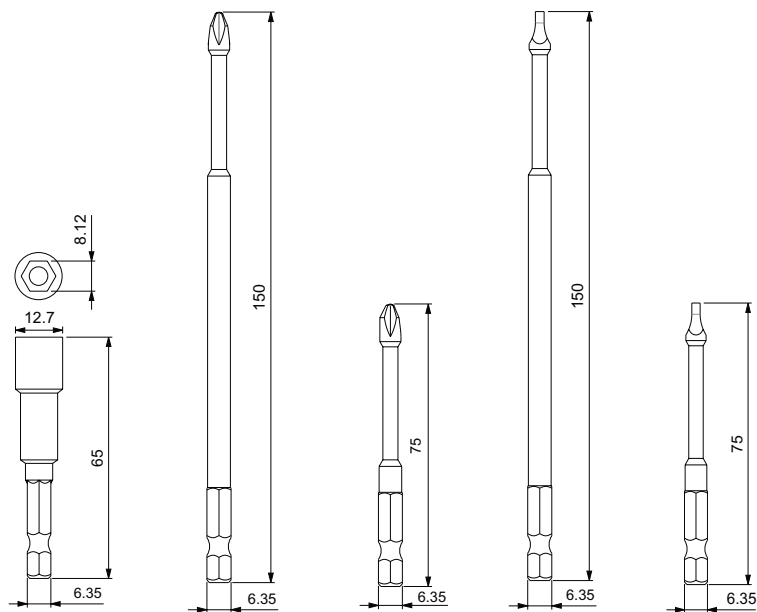
Driver Bits

Commercial Reference	Length (mm)	Driver Type	Quantity	Driver Box Length (mm)	Torque (Nm)	Outer Diameter	Shank	Material	Surface Finish
357DH65	65	Hex 5/16	Pack of 3	90.5	9.0	12.7	¼ Hex / 6.35 mm	High carbon steel (S2)	Blackened Magnetic = Yes
357DP150	150	PH #2		175.3					
357DP75	75	PH #2		100.3	8.0	NA			
357DS150	150	SQ #1		175.3					
357DS75	75	SQ #1		100.3					



357DH65 357DP150 357DP75 357DS150 357DS75

Dimensions (mm)



357DH65 357DP150 357DP75 357DS150 357DS75

Tools and Testers

Testers

493K and 493BTLKI Sparkemate Kit

Sparkemate multi-function electrical installation tester kit in hard carry case. Includes 493L test leads. (493BTLKI with bluetooth logging for Apple iOS and Android)

Main		
Range	Sparkemate	
Commercial Reference	493K	493BTLKI (Bluetooth)
Product or Component Type	Multi-function electrical tester kit	
Bluetooth	No	Yes
Complementary		
Product Weight	3123 g	3060 g
Standards	AS/NZS 3017, AS/NZS 60950, AS/NZS 3100, AS/NZS61010.1 Category IV 600V	



493 and 493BTLI Sparkemate

Sparkemate multi-function electrical installation tester. (493BTLI with bluetooth logging for Apple iOS and Android)

Main		
Range	Sparkemate	
Commercial Reference	493	493BTLI (Bluetooth)
Product or Component Type	Circuit testing equipment	
Bluetooth	No	Yes
Complementary		
Material	Rubber protective cover	
Dimensions (L × W × H)	220 × 110 × 45 mm	
Product Weight	1320 g	1360 g
Standards	AS/NZS 3017, AS/NZS 60950, AS/NZS 3100, AS/NZS61010.1 Category IV 600V	



Tools and Testers

Tester Accessories

493L

Sparkemate, circuit testing equipment, leads

Main	
Range	Sparkemate
Commercial Reference	493L
Product or Component Type	Circuit testing equipment
Complementary	
Product Weight	308 g
Standards	AS/NZS 61010.1 Category IV 600V





SPAN 8
ELECTRICAL INSTALLATION TESTER

SELECT CONDUCTORS
ACTIVE-TO-EARTH
NEUTRAL-TO-EARTH
OR ACTIVE-TO-NEUTRAL

A-E N-E A-N

◀ ○ ▶

ON / RESET
AUTO TURN OFF

EARTH CONTINUITY

INSULATION RESISTANCE

POLARITY

CIRCUIT CONNECTIONS

FAULT LOOP

RCD TRIP

CLIPSAL
Bluetooth SMART
4838TLL Logging

Connection Boxes



Connection Boxes

Junction Boxes

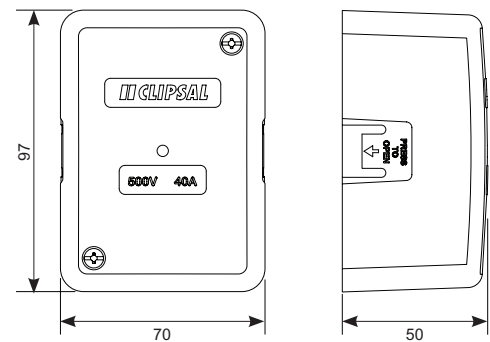
554C4-WE

Clipsal - Large junction box, 4 connectors, clip on lid

Main	
Range	Clipsal
Commercial Reference	554C4-WE
Product or Component Type	Junction box
Provided Equipment	4x Connectors
Terminal Tunnel Diameter (Connector)	5.6 × 6.1 mm
Terminal Type (Connector)	1 screw, 1-way terminals
Colour	White Electric (WE)
Rated Current	40 A
Rated Voltage	500 V
Complementary	
Mounting Centres	73 × 47 mm
Number of Mounting Screw Positions	3
Number of Cable Entries	9
Terminal Connector Accommodates	3 × 6 mm ² or 4 × 2.5 mm ²
Material	Plastic
Dimensions (L × W × D)	97 × 70 × 50 mm
Product Weight	111 g
Standards	ETIM



Dimensions (mm)



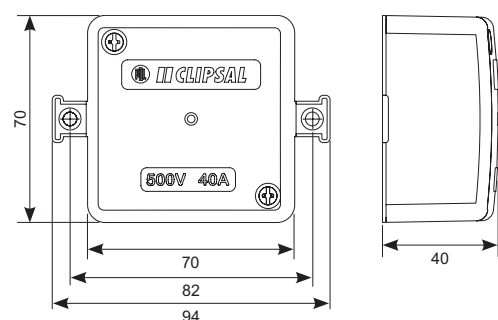
504/4-WE

Clipsal - Medium junction box, 4 connectors

Main	
Range	Clipsal
Commercial Reference	504/4-WE
Product or Component Type	Junction box
Provided Equipment	4x Connectors
Terminal Tunnel Diameter (Connector)	5.6 × 6.1 mm
Terminal Type (Connector)	1 screw, 1-way terminals
Colour	White Electric (WE)
Rated Current	40 A
Rated Voltage	500 V
Complementary	
Mounting Centres	82 mm
Number of Mounting Screw Positions	6
Number of Cable Entries	4
Terminal Connector Accommodates	3 × 6 mm ² or 4 × 2.5 mm ²
Material	Plastic
Dimensions (L × W × D)	70 × 70 × 40 mm
Product Weight	79 g
Standards	ETIM



Dimensions (mm)



Connection Boxes

Junction Boxes

559/3

Clipsal - Small junction box, 3x 2-way terminals

Main	
Range	Clipsal
Commercial Reference	559/3-WE 559/3-BK
Product or Component Type	Junction box
Terminal Tunnel Diameter (Connector)	5.2 × 6 mm
Terminal Type (Connector)	2 screws, 2-way terminals
Colour	White Electric (WE), Black (BK)
Rated Current	30 A
Rated Voltage	500 V
Complementary	
Mounting Centres	52 × 22 mm
Number of Mounting Screw Positions	4
Number of Cable Entries	6
Terminal Connector Accommodates	3 × 6 mm ² or 4 × 2.5 mm ²
Material	Plastic
Dimensions (L × W × D)	73 × 38 × 27 mm
Product Weight	42 g
Standards	ETIM



554/4

Clipsal - Junction box, with 1 earth, 3 active loose connector

Main	
Range	Clipsal
Commercial Reference	554/4-WE
Product or Component Type	Junction box
Provided Equipment	1x Earth, 3x active loose connector
Terminal Tunnel Diameter (Connector)	5.6 × 6.1 mm
Terminal Type (Connector)	1 screw, 1-way terminals
Colour	White Electric (WE)
Rated Current	30 A
Rated Voltage	500 V
Complementary	
Mounting Centres	68 × 40 mm
Number of Mounting Screw Positions	2
Number of Cable Entries	9
Terminal Connector Accommodates	3 × 6 mm ² or 4 × 2.5 mm ²
Material	Plastic
Dimensions (L × W × D)	86 × 58 × 45 mm
Product Weight	12 g
Standards	ETIM



Connection Boxes

Junction Boxes

554JF5-WE

Clipsal - Junction box with 5 fixed terminals

Main	
Range	Clipsal
Commercial Reference	554JF5-WE
Product or Component Type	Junction box
Provided Equipment	5 Fixed terminals
Terminal Tunnel Diameter	4 × Ø6.2 mm and 1 × Ø7 mm
Terminal Type	2 screws, 2-way terminals
Colour	White Electric (WE)
Rated Current	40 A
Rated Voltage	500 V
Complementary	
Mounting Centres	84 mm
Number of Mounting Screw Positions	3
Number of Cable Entries	10
Terminal Accommodates	Small terminal = 3 × 6 mm ² , large terminal = 4 × 6 mm ²
Number of Cable Entries	10
Material	Plastic
Dimensions (L × W × D)	86 × 45 × 58 mm
Product Weight	128 g
Standards	ETIM



559A3

Clipsal - Junction box, miniature, with cover and 3x 2 screw terminal

Main	
Range	Clipsal
Commercial Reference	559A3-WE 559A3-BK
Product or Component Type	Junction box
Provided Equipment	Cover, 3x 2 screw terminal
Terminal Tunnel Diameter	5.2 × 6 mm
Terminal Type	2 screws, 2-way terminals
Colour	White Electric (WE), Black (BK)
Rated Current	30 A
Rated Voltage	500 V
Complementary	
Mounting Centres	52 × 22 mm
Number of Mounting Screw Positions	4
Number of Cable Entries	5 + 1 pre cut Ø11 mm
Terminal Accommodates	3 × 6 mm ²
Material	Plastic
Dimensions (L × W × D)	73 × 38 × 27 mm
Product Weight	47 g
Standards	ETIM



Connection Boxes

Mains Connection Boxes

645/2-BK

Mains connection box unfused, 2 terminal, 20 mm screwed entry

Main	
Range	Clipsal
Commercial Reference	645/2-BK
Product or Component Type	Mains connection box
Colour	Black (BK)
Complementary	
Fixing Mode	Screws
Number of Cable Entries	1
Number of Terminals	2
Fused or Unfused	Unfused
Material	Polyamide (PA6)
Dimensions (L × W × D)	68 × 66 × 50 mm
Product Weight	118 g
Standards	ETIM
Environment	
IP Rating	IP30



645/2N-BK

Clipsal - Neutral screen cable cover suits 1645/2, 645/2A

Main	
Range	Clipsal
Commercial Reference	645/2N-BK
Product or Component Type	Neutral screen cable cover
Colour	Black (BK)
Complementary	
Fixing Mode	Screws
Number of Cable Entries	1
Cable Entry Size	Ø11 mm
Material	Phenolic
Dimensions (L × W × D)	28 × 53 × 64 mm
Product Weight	38 g
Standards	ETIM
Environment	
IP Rating	IP30



Connection Boxes

Mains Connection Boxes

645/4-BK

Clipsal - Mains connection box, unfused, 4 terminal, 20...25 mm dual screwed entry

Main	
Range	Clipsal
Commercial Reference	645/4-BK
Product or Component Type	Mains connection box
Colour	Black (BK)
Complementary	
Fixing Mode	Screws
Number of Cable Entries	4
Number of Terminals	4
Fused or Unfused	Unfused
Material	Polyamide (PA6)
Dimensions (L × W × D)	70 × 55 × 65 mm
Product Weight	165 g
Standards	ETIM
Environment	
IP Rating	IP30



645/4N-BK

Clipsal - Neutral screen cable cover, suits 645/3, 645/4

Main	
Range	Clipsal
Commercial Reference	645/4N-BK
Product or Component Type	Neutral screen cable cover
Colour	Black (BK)
Complementary	
Fixing Mode	Screws
Number of Cable Entries	1
Cable Entry Size	Ø25 mm
Material	Phenolic
Dimensions (L × W × D)	48 × 51 × 63 mm
Product Weight	54 g
Standards	ETIM
Environment	
IP Rating	IP30



Connection Boxes

Mains Connection Boxes

650/2/25-BK

Clipsal - Mains connection box, unfused, 2 terminal, 25...32 mm dual screwed entry

Main	
Range	Clipsal
Commercial Reference	650/2/25-BK
Product or Component Type	Mains connection box
Colour	Black (BK)
Complementary	
Fixing Mode	Screws
Number of Cable Entries	2
Number of Terminals	2
Fused or Unfused	Unfused
Material	Polyamide (PA6)
Product Weight	301 g
Standards	ETIM
Environment	
IP Rating	IP23



650/2AL-BK

Clipsal - Mains connection box, unfused, 2 terminal, aluminium conductor

Main	
Range	Clipsal
Commercial Reference	650/2AL-BK
Product or Component Type	Main connection box
Colour	Black (BK)
Complementary	
Fixing Mode	Screws
Number of Cable Entries	2
Number of Terminals	2
Fused or Unfused	Unfused
Material	Aluminum
Product Weight	267 g
Standards	ETIM
Environment	
IP Rating	IP23



Connection Boxes

Mains Connection Boxes

650/2-BK

Clipsal - Mains connection box, unfused, 2 terminal, 20...25 mm, 19/0.044 cable

Main	
Range	Clipsal
Commercial Reference	650/2-BK
Product or Component Type	Mains connection box
Colour	Black (BK)
Complementary	
Fixing Mode	Screws
Number of Cable Entries	2
Number of Terminals	2
Fused or Unfused	Unfused
Material	Base - Polyster Cover - Phenolic
Product Weight	266 g
Standards	ETIM
Environment	
IP Rating	IP23



650/2N-BK

Clipsal - Neutral screen cable cover, suits 650/2

Main	
Range	Clipsal
Commercial Reference	650/2N-BK
Product or Component Type	Neutral screen cable cover
Colour	Black (BK)
Complementary	
Fixing Mode	Screws
Number of Cable Entries	1
Cable Entry Size	Ø15 mm
Material	Phenolic
Dimensions (L × W × D)	32 × 67 × 73 mm
Product Weight	54 g
Standards	ETIM
Environment	
IP Rating	IP23



Connection Boxes

Mains Connection Boxes

650/4/35-BK

Clipsal - Mains connection box, unfused, 3 phase

Main	
Range	Clipsal
Commercial Reference	650/4/35-BK
Product or Component Type	Mains connection box
Colour	Black (BK)
Complementary	
Fixing Mode	Screws
Number of Cable Entries	3
Number of Terminals	4 (4x 2-way tunnels)
Terminal Accommodates	Max. 50 mm ²
Fused or Unfused	Unfused
Material	Base - PVC (Polyvinyl Chloride) Cover - PC (Polycarbonate)
Dimensions (L × W × D)	156 × 112 × 175 mm
Product Weight	1361 g
Standards	ETIM
Environment	
IP Rating	IP23



650/4AL-BK

Clipsal - Mains connection box, unfused, 4 terminal, 25...32 mm dual screwed entry

Main	
Range	Clipsal
Commercial Reference	650/4AL-BK
Product or Component Type	Main connection box
Colour	Black (BK)
Complementary	
Fixing Mode	Screws
Number of Cable Entries	4
Number of Terminals	4
Fused or Unfused	Unfused
Material	Base - Polyster Cover - Phenolic
Product Weight	358 g
Standards	ETIM
Environment	
IP Rating	IP23



Connection Boxes

Mains Connection Boxes

650/4-BK

Clipsal - Mains connection box, unfused, 4 terminal, 25...32 mm dual screwed entry

Main	
Range	Clipsal
Commercial Reference	650/4-BK
Product or Component Type	Mains connection box
Colour	Black (BK)
Complementary	
Fixing Mode	Screws
Number of Cable Entries	4
Number of Terminal Blocks	4 (3x 2 tunnels, 1x 3 N tunnels)
Fused or Unfused	Unfused
Material	Polyamide (PA6)
Dimensions (L × W × D)	92 × 88 × 110 mm
Product Weight	362 g
Standards	ETIM
Environment	
IP Rating	IP23



650/4N-BK

Clipsal - Neutral screen cable cover, suits 650/3, 650/4

Main	
Range	Clipsal
Commercial Reference	650/4N-BK
Product or Component Type	Neutral screen cable cover
Colour	Black (BK)
Complementary	
Fixing Mode	Screws
Number of Cable Entries	1
Cable Entry Size	16 × 12 mm (Oval)
Material	Phenolic
Dimensions (H × W × L)	51 × 67 × 78 mm
Product Weight	73 g
Standards	ETIM
Environment	
IP Rating	IP23



Connection Boxes

Mains Connection Boxes

651A3-BK

Clipsal - Mains connection box, fused, 90 A, 3 phase, suitable for aluminium or copper cable

Main	
Range	Clipsal
Commercial Reference	651A3-BK
Product or Component Type	Mains connection box
Colour	Black (BK)
Rated Current	90 A
Voltage Phase	3
Complementary	
Fixing Mode	Screws
Number of Cable Entries	6
Number of Terminals	3x 2-Way, 1x N 2-Way
Terminal Accommodates	Min. aluminium cable 16 mm ² , Min. copper cable 10 mm ² , Max. cable 50 mm ²
Fused or Unfused	Fused
Material	Base - PVC (Polyvinyl Chloride) Cover - PVC (Polyvinyl Chloride)
Dimensions (L × W × D)	365 × 138 × 209 mm
Product Weight	3899 g
Standards	ETIM
Environment	
IP Rating	IP23



651A-BK

Clipsal - Mains connection box, fused, 80 A, single phase, suitable for aluminium or copper cable

Main	
Range	Clipsal
Commercial Reference	651A-BK
Product or Component Type	Main connection box
Colour	Black (BK)
Rated Current	80 A
Complementary	
Fixing Mode	Screws
Number of Cable Entries	2 (1x 25 mm, 1x 40 mm)
Number of Terminals	Neutral bar 3 terminals
Fused or Unfused	Fused
Material	Base - PVC (Polyvinyl Chloride) Cover - Phenolic
Dimensions (L × W × D)	143 × 100 × 143 mm
Product Weight	1045 g
Standards	ETIM
Environment	
IP Rating	IP23





Fixings



Fixings

357 Series - Screws

Commercial Reference	Length (mm)	Head Diameter (mm)	Screw Type	Screw Head Shape	Screw Head Type	Material	Screw Gauge (g)	Quantity
357BUG7N20-100	20	8.75	Self tapping	Bugle head	Square drive no 1 (SQ1), Philips No. 2	Carbon steel	7	100
357BUG7N20-500	20	8.75	Self tapping	Bugle head	Square drive no 1 (SQ1), Philips No. 2	Carbon steel	7	500
357BUG7N25-100	25	8.75	Self tapping	Bugle head	Square drive no 1 (SQ1), Philips No. 2	Carbon steel	7	100
357BUG7N25-500	25	8.75	Self tapping	Bugle head	Square drive no 1 (SQ1), Philips No. 2	Carbon steel	7	500
357BUG7N30-100	30	8.75	Self tapping	Bugle head	Square drive no 1 (SQ1), Philips No. 2	Carbon steel	7	100
357BUG7N30-500	30	8.75	Self tapping	Bugle head	Square drive no 1 (SQ1), Philips No. 2	Carbon steel	7	500
357BUG7N35-100	35	8.75	Self tapping	Bugle head	Square drive no 1 (SQ1), Philips No. 2	Carbon steel	7	100
357BUG7N35-500	35	8.75	Self tapping	Bugle head	Square drive no 1 (SQ1), Philips No. 2	Carbon steel	7	500
357BUG7N45-100	45	8.75	Self tapping	Bugle head	Square drive no 1 (SQ1), Philips No. 2	Carbon steel	7	100
357BUG7N45-500	45	8.75	Self tapping	Bugle head	Square drive no 1 (SQ1), Philips No. 2	Carbon steel	7	500
357BUT8D20-100	20	10.4	Self tapping	Button head	Square drive no 1 (SQ1), Philips No. 2	Carbon steel	8	100
357BUT8D20-500	20	10.4	Self tapping	Button head	Square drive no 1 (SQ1), Philips No. 2	Carbon steel	8	500
357BUT8D32-100	32	10.4	Self tapping	Button head	Square drive no 1 (SQ1), Philips No. 2	Carbon steel	8	100
357BUT8D32-500	32	10.4	Self tapping	Button head	Square drive no 1 (SQ1), Philips No. 2	Carbon steel	8	500
357BUT8N20-100	20	10.4	Self tapping	Button head	Square drive no 1 (SQ1), Philips No. 2	Carbon steel	8	100
357BUT8N20-500	20	10.4	Self tapping	Button head	Square drive no 1 (SQ1), Philips No. 2	Carbon steel	8	500
357BUT8N32-100	32	10.4	Self tapping	Button head	Square drive no 1 (SQ1), Philips No. 2	Carbon steel	8	100
357BUT8N32-500	32	10.4	Self tapping	Button head	Square drive no 1 (SQ1), Philips No. 2	Carbon steel	8	500
357FLA10D16-100	16	8.75	Self tapping	Flat Top	Square drive no 1 (SQ1), Philips No. 2	Carbon steel	10	100
357FLA10D16-500	16	8.75	Self tapping	Flat Top	Square drive no 1 (SQ1), Philips No. 2	Carbon steel	10	500
357FLA10N16-100	16	8.75	Self tapping	Flat Top	Square drive no 1 (SQ1), Philips No. 2	Carbon steel	10	100
357FLA10N16-500	16	8.75	Self tapping	Flat Top	Square drive no 1 (SQ1), Philips No. 2	Carbon steel	10	500
357PAN7D20-100	20	8	Self tapping	Pan head	Square drive no 1 (SQ1), Philips No. 2	Carbon steel	7	100
357PAN7D20-500	20	8	Self tapping	Pan head	Square drive no 1 (SQ1), Philips No. 2	Carbon steel	7	500
357PAN7D25-100	25	8	Self tapping	Pan head	Square drive no 1 (SQ1), Philips No. 2	Carbon steel	7	100
357PAN7D25-500	25	8	Self tapping	Pan head	Square drive no 1 (SQ1), Philips No. 2	Carbon steel	7	500
357PAN7D30-100	30	8	Self tapping	Pan head	Square drive no 1 (SQ1), Philips No. 2	Carbon steel	7	100
357PAN7D30-500	30	8	Self tapping	Pan head	Square drive no 1 (SQ1), Philips No. 2	Carbon steel	7	500
357PAN7N20-100	20	8	Self tapping	Pan head	Square drive no 1 (SQ1), Philips No. 2	Carbon steel	7	100
357PAN7N20-500	20	8	Self tapping	Pan head	Square drive no 1 (SQ1), Philips No. 2	Carbon steel	7	500
357PAN7N25-100	25	8	Self tapping	Pan head	Square drive no 1 (SQ1), Philips No. 2	Carbon steel	7	100
357PAN7N25-500	25	8	Self tapping	Pan head	Square drive no 1 (SQ1), Philips No. 2	Carbon steel	7	500
357PAN7N30-100	30	8	Self tapping	Pan head	Square drive no 1 (SQ1), Philips No. 2	Carbon steel	7	100
357PAN7N30-500	30	8	Self tapping	Pan head	Square drive no 1 (SQ1), Philips No. 2	Carbon steel	7	500

Fixings

Bugle and Tackle Box Screws

Commercial Reference		Package	Quantity	Box Type
357BUGB	357BUG7N20-100	Multipack x 5 types	100 / each type	Bugle
	357BUG7N25-100			
	357BUG7N30-100			
	357BUG7N35-100			
	357BUG7N45-100			
357TACB	357BUG7N20-100	Multipack x 11 types		Tackle
	357BUG7N30-100			
	357BUG7N45-100			
	357BUT8N20-100			
	357BUT8N32-100			
	357BUT8D20-100			
	357BUT8D32-100			
	357FLA10N16-100			
	357FLA10D16-100			
357PAN7D20-100				
357PAN7D30-100				



357BUGB



357TACB

355 Series

Screws used to fix switches and power points

Commercial Reference	Length (mm)	Head Diameter (mm)	Screw Type	Screw Head Shape	Material	Thread Type (Pitch)	Compatible Nut	Quantity
355	32	6.4	Standard point	Panhead, slotted	Steel	M3.5, 8.8	359	100
355A	50	6.4	Standard point	Panhead, slotted	Steel	M3.5, 8.8	359	100
355B	75	6.4	Flat	Button	Steel	M3.5, 8.8	359	100

31JSCREW

Specifically designed to screw into the back of standard, 2000 and C2000 Series plates to stop the mech from falling out when pressure is applied from the front

Commercial Reference	Length (mm)	Head Diameter (mm)	Screw Type	Screw Head Shape	Material	Screw Gauge	Quantity
31JSCREW	8	8	Flat	Flat	Brass	-	100

359

Square nut











Commercial Reference	Dimensions (L x W x H) mm	Thread Type (Pitch)	Compatible Screw Type	Material	Quantity
359	7.8 x 7.8 x 2.4	M3.5, 8.8	355	Steel	100



Other Installation Material Accessories



Other Installation Material Accessories

Commercial Reference	Description	Product Image
157FSM	Flexible fire resistant sealant 300 ml cartridge	
202M	Clip earth adjust 16...20 mm	
203M	Clip earth adjust 15...20 mm	
205M	Clip earth 12 mm	
205MBS	Clip earth brass 12.7 mm	
206M	Clip earth 16 mm	
206MBS	Clip earth brass 16 mm	
207M	Clip earth 20 mm	
207MBS	Clip earth brass 20 mm	
208M	Clip earth 25 mm cond 20 mm hot-dip galvanized	
208MBS	Clip earth brass 25 mm	
209M	Clip earth 32 mm cond 25 mm hot-dip galvanized	
210M	Clip earth 40 mm cond 32 mm hot-dip galvanized	
211M	Clip earth 50 mm cond 40 mm hot-dip galvanized	
31/3F-WE	Flange pvc mounting 167 × 115 mm	
BP22	Link line tap	
BP24	Link line tap	
BP25	Link line tap	

Reference Numbers

Find technical information by product Reference number

Ref.	Page	Ref.	Page	Ref.	Page	Ref.	Page
10MD15SLB-WE	52	202M	95	357BUT8D20-100	92	435VFSM-BK	20
10MD20LB-WE	52	203M	95	357BUT8D32-100	92	435VFSM-WE	20
10MDLB-WE	52	205M	95	357BUT8N20-100	92	438-TR	59
10MDP-WE	52	205MBS	95	357BUT8N32-100	92	438/2-TR	59
10MDSL-WE	52	206M	95	357DH65	74	438/20-TR	59
10MLB-WE	52	206MBS	95	357DP150	74	438/32-TR	59
10MP-WE	52	207M	95	357DP75	74	438HD-TR	59
1439/20-TR	57	207MBS	95	357DS150	74	438L-TR	59
1439/4P-TR	57	208M	95	357DS75	74	438N-TR	59
1439S-TR	57	208MBS	95	357FLA10D16-100	92	438S15-TR	59
1439S15-TR	57	209M	95	357FLA10N16-100	92	438S15HD-TR	59
1439SHD-TR	57	210M	95	357PAN7D20-100	92	438XHD-TR	59
154	15	211M	95	357PAN7D30-100	92	439/110-TR	54
154/1	15	2155PHRM2	12	357TACB	92	439/4-TR	55
154/2	16	2155PRM2	13	359	92	439S-BK	54
154B25	17	2157/2F	34	402-WE	43	439S-TR	54
154C4	17	223H-WE	27	402/32-WE	43	439S-WE	54
154RM	16	238-BK	29	412-WE	43	439S15-TR	54
155	5	238-GY	29	412UA-BR	43	439S15HD-TR	54
155F	5	238-WE	29	412UA-WE	43	439SHD-TR	54
155H2	6	238/25-GY	27	413/15-WE	47	439SL-TR	54
155N	6	238/25-WE	27	413/4P-WE	48	439SLHD-TR	54
155NA	7	238A-WE	28	413E-WE	44	439SN-TR	54
155NAR	8	238A/25-WE	28	413F-WE	45	439SXHD-TR	54
155P	8	257D-GY	37	413L-WE	46	439SZ-TR	54
155P2	9	266HD20	73	413QC-WE	49	448-WE	21
155PRMU4	14	266HD25	73	414-WE	50	448SD-WE	20
155U4	7	266MD20	73	415-WE	51	449A-BK	22
155VH	9	266MD25	73	415/15-WE	51	449A-RD	22
155VNA	10	282/20-BK	70	415/15LB-WE	51	449AB-VW	21
155VNAR	10	3000DM-VW	18	415VF-BK	51	449AS-WE	23
156/1	11	3000SM-VW	19	415VF-WE	51	449ASD-BK	22
156/1N	11	3004M-VW	19	415VF15-WE	51	449ASD-WE	22
156/2	12	31/3F-WE	95	418S-BK	56	450VC-WE	23
157/1	30	3155H4	13	418S-TR	56	461SUA-WE	58
157/1P	35	3157/4PRM	37	418S-WE	56	463SAS-TR	58
157/1PRM	35	31JSCREW	92	418S15-TR	56	463SUA-BK	58
157/1PRMD	36	355	92	418S15-WE	56	463SUA-TR	58
157/2	30	355A	92	418SL-TR	56	492-TR	55
157/2F	33	355B	92	418SUA-TR	56	492/32-TR	55
157FSM	95	357BUG7N20-100	92	426-WE	53	493	75
157MDF	33	357BUG7N25-100	92	426L-WE	53	493BTLI	75
157PRM4	36	357BUG7N30-100	92	435A-BK	61	493BTLKI	75
160	31	357BUG7N35-100	92	435A15-BK	61	493K	75
164/1	31	357BUG7N45-100	92	435VFS15-BK	62	493L	76
2000SMK-WE	18	357BUGB	92	435VFS15-WE	62	504/4-WE	79

Reference Numbers

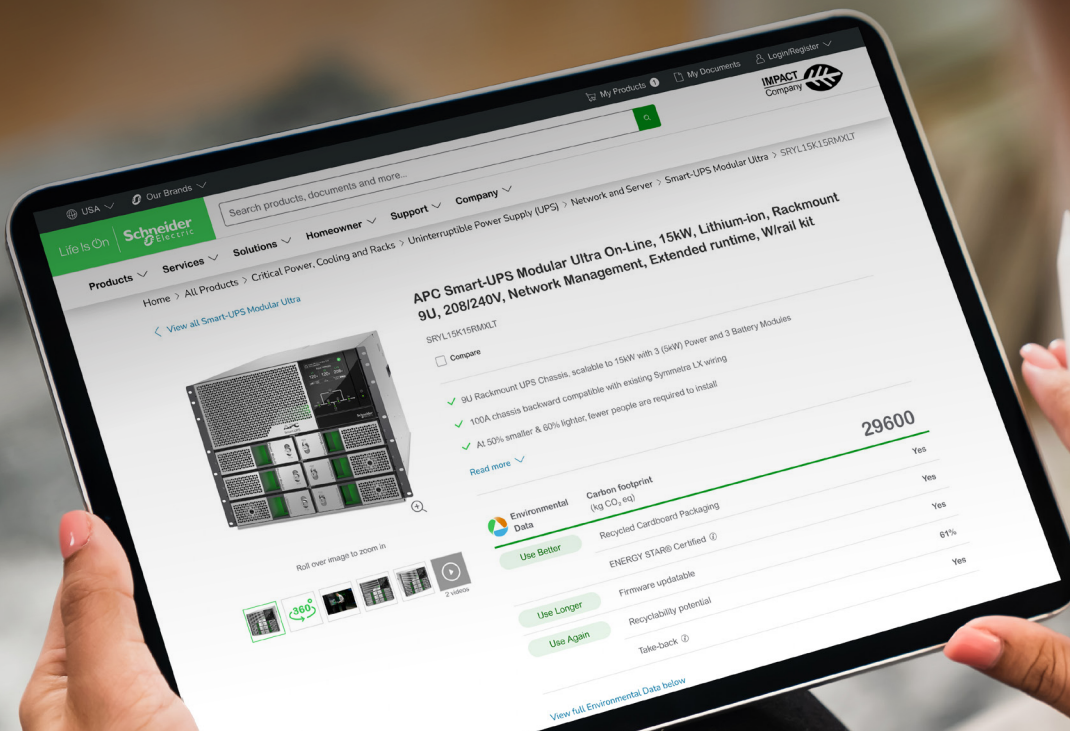
Find technical information by product Reference number

Ref.	Page	Ref.	Page
554/4-WE	80	650/4-BK	87
554C4-WE	79	650/4/35-BK	86
554JF5-WE	81	650/4AL-BK	86
559/3-BK	80	650/4N-BK	87
559/3-WE	80	651A-BK	88
559A3-BK	81	651A3-BK	88
559A3-WE	81	70/1-WE	24
562A	65	70/2-WE	24
563B/100	66	800CL-WE	58
563J/50	66	90B-BK	38
563K16	67	90BD-BK	38
563K35	67	90BD3-BK	39
563L2	68	90BD4-BK	39
564/0	68	90BI-BK	40
564/0BB	68	90F-BK	40
564/0BKT	68	90FS-BK	41
564/1	68	BP22	95
564/1BB	68	BP24	95
564/1BKT	68	BP25	95
564/2	68	BP303	65
564/3	68	BP7	65
564/4	68	C2015D4MB-WE	25
564PC1	69	C2015D4P-WE	25
564PC2	69	C2449ASD-WE	26
564PC3	69	PDL140C	32
564PC4	69	PDL141C	32
564PC5	69	SS15-EO	60
567/16	69	SS15-GY	60
567/19	69	SS15-WE	60
567/20	69	SS15/15-GY	60
567/25.5	69	SS15/15N-GY	60
567/32	69	SS15N-EO	60
568/20	69	SS15N-GY	60
593/15	65		
593/15PP	65		
593/20	65		
593/20PP	65		
593/30	65		
645/2-BK	82		
645/2N-BK	82		
645/4-BK	83		
645/4N-BK	83		
650/2-BK	85		
650/2/25-BK	84		
650/2AL-BK	84		
650/2N-BK	85		

Notes



Environmental Data Program

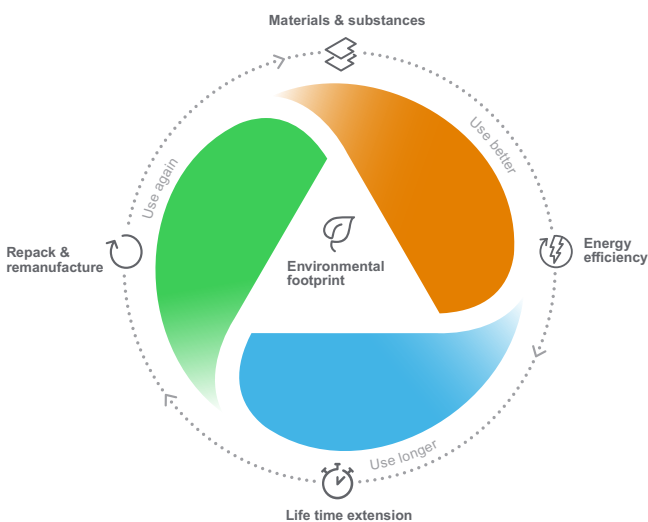


Next-level transparency for better-informed product choices

The Environmental Data Program is a framework for how we measure, categorize, and compare the environmental attributes and footprint of our products.

Using a rigorous, fact-based methodology, the program provides environmental data from across the product lifecycle.

Five data categories across the product lifecycle



Use Better: How sustainable a product is, including environmental footprint, materials and substances, packaging, and energy efficiency.

Use Longer: How a product's life time can be effectively extended in terms of reparability and updatability.

Use Again: How a product can be reused, from dismantling and remanufacturing to recyclability and manufacturer take back.

With this transparent, verified data, customers and partners are empowered to make conscious environmental choices and accurately evaluate and report on sustainability performance.

All our hardware offers have an associated environmental data available on se.com product pages.



Learn more about the **Environmental Data Program**

Schneider Electric (Australia) Pty. Ltd.
33-37 Port Wakefield Road,
Gepps Cross, South Australia, 5094
PO Box 132, Enfield Plaza,
South Australia, 5085
www.clipsal.com

Consumer Support Enquiries
National Customer Care
Phone: 13SEAU (137328)
clipsal.com/clipsal-support/contact-us

05-2026

©2026 Schneider Electric. All Rights Reserved. Iconic and Clipsal are trademarks of Schneider Electric (Australia) Pty Ltd.
Document reference: LSB03196EN_01

 **CLIPSAL**[®]

clipsal.com/essentials

Schneider
 Electric™