

User Manual

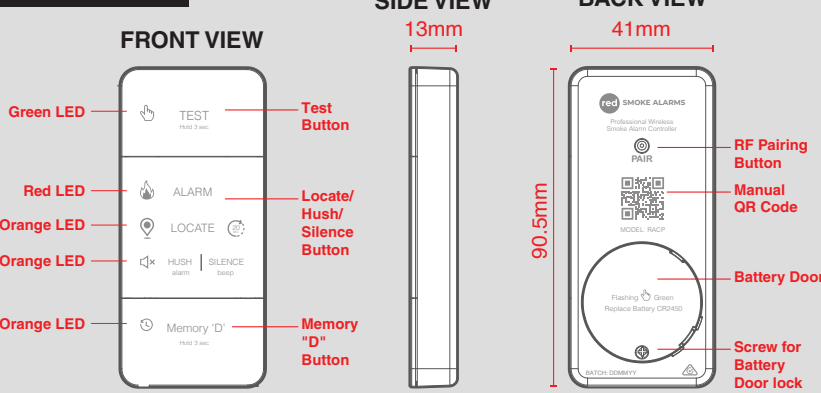


Model: RACP Professional Wireless Smoke Alarm Controller

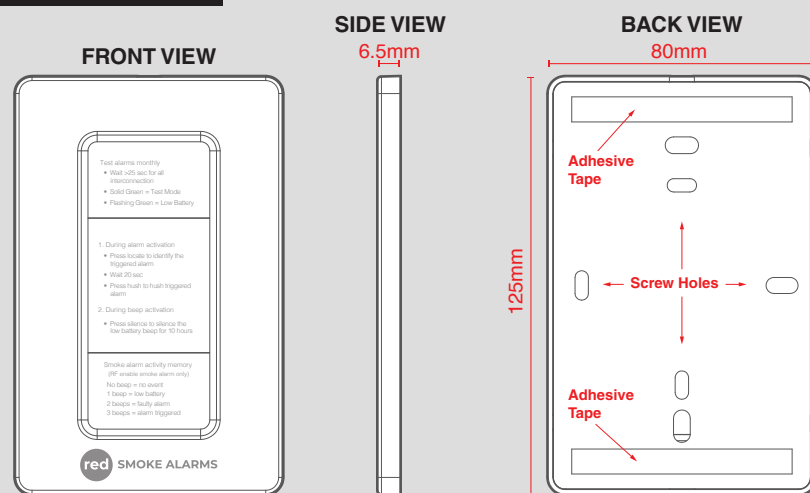
CONTROLLER SPECIFICATION & DIAGRAM



CONTROLLER



MOUNTING BASE



SPECIFICATION

Supply Voltage: 3V Lithium battery
Replaceable Battery: CR2450
Battery Life: 2 years
RF Frequency: 433Mhz
Operating Temp: 0°C to 40°C
Operating Humidity: 15% - 95% (Non Condensing)
Comply with: AS/NZS 4268:2017 Amd 1:2021
AS/NZS 62368.1:2022
AS/NZS 2772.2:2015 Amd 1:2018
RF Pairing: maximum 40 Red Smoke Alarms
RF Range: Indoor Area 30m
100m in free field

INTRODUCTION

The Professional Wireless Smoke Alarm Controller acts as the central hub for your wireless Red Smoke Alarm system, ensuring seamless coordination and enhanced safety. It operates at an RF frequency of 433MHz and can connect with up to 40 Red RF Smoke Alarms, creating a comprehensive network for your space. The controller is compatible with both Red Original smoke alarms and Red Professional smoke alarms, provided they are RF-enabled models.

Powered by a replaceable CR2450 battery with a lifespan of approximately two years, this controller offers essential functions, including wireless testing of your smoke alarms, locating triggered alarms, silencing low battery beeps, and accessing the Smoke Alarm Memory "D" (History). Designed for efficiency and reliability, it provides complete control over your wireless alarm system, enhancing the security of your environment.

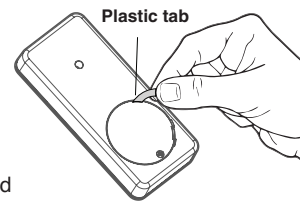
INSTALLATION

For optimal performance, install the Wireless Smoke Alarm Controller in a visible and easily accessible location. Keep it away from water, extreme heat, and direct sunlight. Ensure the mounting surface is secure and that there is a clear line of sight for effective communication with RF Smoke Alarms.

Installation is simple - secure the mounting base to the wall using screws or use the pre-applied adhesive backing to stick it in place. The controller attaches magnetically to the base for easy removal and reattachment.

STEP 1 ACTIVATION

Remove the small plastic tab from the back of the battery door. Once removed, all LEDs will flash once to indicate battery activation.

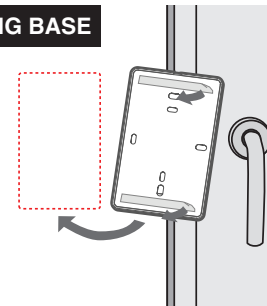


Use a tool to press and hold the RF pairing button for at least 5 seconds until the orange locate LED turn solid to turn on the controller.

STEP 2 INSTALL MOUNTING BASE

OPTION A

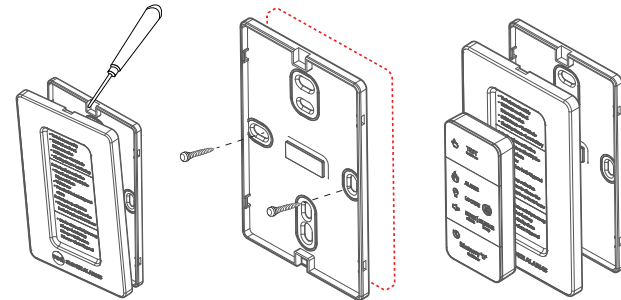
1. Peel off the protective layer from the pre-applied adhesive on the back of the mounting base.
2. Clean the wall surface, then firmly press the mounting base onto the wall, and place the controller onto the base.



STEP 2 INSTALL MOUNTING BASE

OPTION B

1. Use a screwdriver to detach the mounting base.
2. Secure the mounting base directly to the wall by driving screws into the holes on the back.
3. Reassemble the mounting base and place the controller onto it.



RF WIRELESS INTERCONNECTION

The easiest way to establish a wireless interconnection is to gather all RF devices and perform the RF pairing process simultaneously.

The RF pairing button is located on the back of the controller (Fig. 1).

RACP as Master Pairing Mode

1. Use a tool to press and hold the RF pairing button for at least 5 seconds.
2. The front orange locate LED will turn solid, indicating Master Pairing Mode is active, the orange locate LED will remain on for 150 seconds before timing out.
3. Get a RF-enabled smoke alarm, press the alarm's RF pairing button 2 times, the Red LED on the smoke alarm will flash 5 times indicating successful interconnection.

4. To exit Master Pairing Mode early, press the RF pairing button once.

RACP as Slave to connect to a Master

1. Use a tool to quickly press the RF pairing button twice.
2. The front orange locate LED will flash 5 times, indicating successful interconnection.

Reset RF Pairing Memory

1. Use a tool to press the RF pairing button 5 times.
2. The front orange locate LED will flash 10 times to clear the RF pairing memory, removing it from the network.

Please note: Once the RF Pairing network has been set up, the RF Wireless Pairing Memory will persist. Activating or deactivating the device will not eliminate the units from the RF network. The sole approach to remove a device from the RF network is by erasing the RF Wireless Pairing memory from the device.

For more help, visit www.redsmokealarms.com.au

TESTING

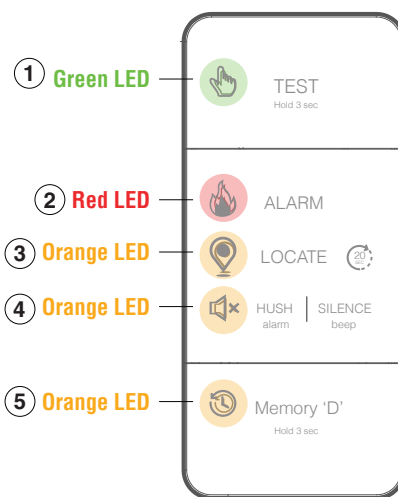
TESTING RF WIRELESS INTERCONNECTION

- Press and hold the controller's test button for 3 seconds until the **Green** LED turns on (solid).
- The LED will remain solid for 150 seconds, indicating Test Mode is active.
- During this time, all RF-paired alarms will trigger within 60 seconds.
- To exit Test Mode early, press the test button once.
- We recommend weekly testing of all RF network devices.

TESTING RF IN ADDITION - THE NETWORK SHOULD ALSO BE TESTED WHENEVER:

- An additional alarm or ancillary product is added to the system.
- There are changes to the structure of your property.
- There are significant changes in the position of large items of furniture or electrical products in your home.

CONTROLLER FEATURES



1 - Test

Press and hold the "TEST" button for 3 seconds. The **green** LED will turn solid, and the test signal will be transmitted continuously for approximately 150 seconds. During this time, all interconnected alarms will receive the signal and trigger.

To exit test mode before 150 seconds, press the test button once - the **green** LED will turn off. Refer to the "Testing" section for more details.

A **green** LED flashing every 4 seconds indicates a low battery and requires battery replacement. Refer to the "Battery Replacement" section for more details.

2 - Alarm / 3 - Locate / 4 - Hush/Silence

When a wireless smoke alarm detects smoke and sends a signal to the controller, the **red alarm LED** on the controller will flash continuously, along with the **orange locate LED**.

To enter Locate mode, **press the "LOCATE/HUSH/SILENCE" button** once. both the **red alarm LED** and the **orange locate LED** to turn solid.

In Locate mode, all interconnected wireless smoke alarms will stop sounding, except for the one that originally detected the smoke.

Locate mode lasts for approximately 120 seconds. If smoke is still present after this period, all interconnected alarms will activate again.

After 20 seconds in Locate mode, the **orange hush/silence LED** will start flashing. **Press the "LOCATE/HUSH/SILENCE" button** again will hush all triggered alarms for 10 minutes, the **orange hush/silence LED** will turn solid, the **orange locate LED** will turn off, and the **red alarm LED** will remain solid.

Alternatively, the user can **press the TEST/HUSH button** directly on the smoke alarm that detected the smoke to enter HUSH mode.

If no smoke is detected after 48 seconds, all LEDs will turn off.

If an interconnected wireless smoke alarm emits a single or double beep, **press the "LOCATE/HUSH/SILENCE" button** once to silence it for 10 hours.

5 - Memory "D"

Press and hold the Memory "D" button for 3 seconds. The **orange** Memory "D" LED will turn solid for 150 seconds, indicating that Memory "D" mode is active.

Within 25 seconds, all interconnected smoke alarms will receive the RF wireless history prompt signal. If any alarm has a past event, it will display the corresponding history:

"D" for Low Battery

"DD" for Fault Signal

"DDD" for Alarm Triggered

Memory "D" mode will automatically exit after 150 seconds, and the **orange** Memory "D" LED will turn off. To exit manually before 150 seconds, press the "Memory D" button once.

When a wireless smoke alarm has a low battery signal (single beep), a fault signal (double beep) or triggered, it sends a notification to the controller. The **orange** Memory "D" LED will flash once every 4 seconds for 72 hours, reminding the user to press the "Memory D" button to review past events.

Note: The Memory "D" feature of the controller is compatible with both Red Original smoke alarms (starting from batch 150525) and Red Professional smoke alarms (starting from batch 150725).

BATTERY REPLACEMENT

- The battery can last up to 2 years under normal usage. When the **green** LED flashes once every 4 seconds, it indicates a low battery for the controller.
- To replace the battery, use a phillips head screwdriver to unscrew the battery door (Fig2.1), then gently lift the battery door with the flat head screwdriver (Fig2.2).
- Insert a new CR2450 battery.

Fig.2.1

Use a screw driver to unscrew

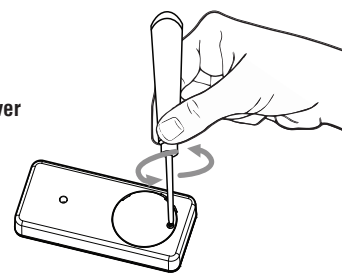
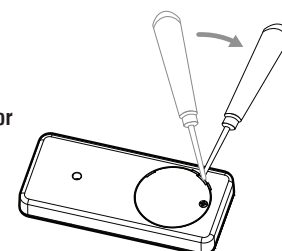


Fig.2.2

Lift up the battery door



INDICATION AND ACTION

If you notice any indications from the smoke alarm controller and are unsure of their meaning, please refer to the chart below for the "LED Indicators". This chart will assist you in understanding the current status of the controller and the necessary actions to take. If you require further assistance, we recommend reaching out to our technical support for inquiries. You can find the contact details in this manual.

STATUS	LED INDICATOR	EXPLANATION	ACTION NEEDED
Powered On	All LEDs flash once	Controller activated	No action required.
Test Mode	Green LED turns solid	Test signal will be transmitted continuously for approximately 150 seconds. All interconnected alarms will receive the signal and trigger	Press and hold the TEST button for 3 seconds to activate the test mode.
Low Battery (Controller)	Green LED flash once every 4 seconds	The controller's battery is running low.	Replace a new CR2450 battery in the controller. Refer "BATTERY REPLACEMENT" section for further instructions.
Fire Alarm Mode	Red Alarm LED and Orange Locate LED are flashing rapidly	Paired wireless smoke alarm detects smoke and sends a signal to the controller	1. Press Locate/Hush/Silence Button once. Red Alarm LED and Orange Locate LED will turns solid and enter locate mode.
Locate Mode Hush Mode	Locate: Red Alarm LED and Orange Locate LED turn solid Hush: Red Alarm LED and Orange Hush/silence LED turn solid	Only the originally triggered alarm will remain active, while all other alarms will be hushed.	1.When Red Alarm LED and Orange Locate LED turn solid. 2.Search for the smoke alarm that still trigger, press the TEST/HUSH button directly on the smoke alarm to enter HUSH mode or wait 20 seconds until the Orange Hush/silence LED flashing, press Locate/Hush/Silence Button once again will hush all triggered alarms for 10 minutes, the Orange Hush/silence LED will turn solid, the Orange Locate LED will turn off, and the Red Alarm LED will remain solid. Refer "CONTROLLER FEATURE" for further instructions and details.
Silence Mode	Orange Hush/silence LED turn solid	Paired wireless smoke alarm emits a single beep or double beeps	Press Locate/Hush/Silence Button once to silence the paired wireless smoke alarm in the network for 10 hours.
Memory "D" Mode	Orange Memory LED turns solid	Search for smoke alarm's past events in the network	Press and hold the Memory "D" button for 3 seconds to activate the Memory "D" mode. The Orange Memory "D" LED will turn solid for 150 seconds. Any paired wireless smoke alarm with a past event will emit beep: No sound: No event One "D" sound: Low battery Two "D" sounds: Fault Three "D" sounds: Alarm triggered Turning off and on resets the smoke alarm memory after one hour, alternatively it remains in memory for 14 days.
Memory "D" Signal	Orange Memory LED flash once every 4 seconds for 72 hours	A notification is sent to the controller when a paired wireless smoke alarm experiences a low battery (single beep), a fault (double beep), or is triggered	Press and hold the Memory "D" button for 3 seconds to activate the Memory "D" mode. The Orange Memory "D" LED will turn solid for 150 seconds. Any paired wireless smoke alarm with a past event will emit beep: No sound: No event One "D" sound: Low battery Two "D" sounds: Fault Three "D" sounds: Alarm triggered Turning off and on resets the smoke alarm memory after one hour, alternatively it remains in memory for 14 days.

WARRANTY

K.P.S. AUSTRALIA PTY LTD. warrants the RACP to be free from defects in materials and workmanship under normal use and service for a period of 3 years. The company will not be obligated to repair or replace parts which are found to be in need of repair because of misuse, damage or alterations that occur after the date of purchase. Return the RACP with proof of purchase to your local distributor. The liability of the company arising from the sale of this RACP shall not in any case exceed the cost of replacement and in no case shall the company be liable for consequential loss or damages resulting from the failure of the RACP.

K.P.S. AUSTRALIA PTY LTD. SHALL HAVE NO LIABILITY FOR ANY PERSONAL INJURY OR PROPERTY DAMAGE, OR ANY SPECIAL INCIDENTAL, CONTINGENT OR CONSEQUENTIAL DAMAGE OF ANY KIND RESULTING FROM A FIRE. THE EXCLUSIVE REMEDY FOR BREACH OF THE LIMITED WARRANTY CONTAINED HEREIN IS THE EXCLUSIVE OPTION BY K.P.S. AUSTRALIA PTY LTD. TO REPAIR OR REPLACE THE DEFECTIVE PRODUCT. IN NO CASE SHALL K.P.S. AUSTRALIA PTY LTD.'S LIABILITY UNDER ANY OTHER REMEDY PRESCRIBED BY LAW EXCEED THE PURCHASE PRICE. YOUR RACP IS NOT A SUBSTITUTE FOR PROPERTY, DISABILITY, LIFE OR OTHER INSURANCE OF ANY KIND. APPROPRIATE COVERAGE IS YOUR RESPONSIBILITY. CONSULT YOUR INSURANCE AGENT.

This does not affect your statutory rights.
This device is only suitable for single occupancy private dwellings and not intended for multi occupancy private dwellings or commercial or industrial dwellings. Waste electrical products should not be disposed of with normal household waste. Please recycle where facilities exist. Check with your Local Authority or retailer for recycling advice. New regulation will encourage the recycling of Waste from Electrical and Electronic Equipment (European "WEEE Directive" effective August 2005).

K.P.S. AUSTRALIA PTY LTD. reserves the right to change specifications,modify designs and discontinue items without incurring obligation and whilst every effort is made to ensure that descriptions, specifications and other information in this catalogue are correct, no warranty is given in respect of these of and the company shall not be liable for any error therein.

© Red Smoke Alarms 2025

This material copyright under Australian and international laws. Except as permitted under the relevant law, no part of this work may be reproduced by any process without prior written permission of and acknowledgment to K.P.S. AUSTRALIA PTY LTD.

E&OE
V 1.0



Contact Details
K.P.S. AUSTRALIA PTY LTD
20 Kikuyu Road, Chevallum, QLD 4555
service@redsmokealarms.com.au.
www.redsmokealarms.com.au
1300 316 552



BATTERY REPLACEMENT



Keep new and used batteries away from children.

This product contains a replaceable (coin/button) battery which poses a risk to children and can cause injury.

If the smoke alarm controller is damaged, or the battery compartment (back cover) does not close securely, dispose of the defective smoke alarm controller and replace with a new one.

If you think a battery has been swallowed, seek medical attention immediately.

Do not ingest battery - chemical burn hazard. If the coin/button cell battery is swallowed, it can cause severe internal burns in just two hours and can lead to death.



WARNING

KEEP OUT OF REACH OF CHILDREN

Swallowing can lead to chemical burns, perforation of soft tissue, and death.

Severe burns can occur within 2 hours ingestion. Seek medical attention immediately.

