

ROBUS[®]

**HARBOUR EXPRESS 32W/26W/20W/16W LED
CORROSION PROOF, IP66, 4FT, GREY,
3000K/4000K/5700K**

RHEX12-24

PLEASE READ INSTRUCTION BEFORE COMMENCING INSTALLATION AND RETAIN FOR FUTURE REFERENCES.

! Electrical products can cause death or injury, or damage to property. If in any doubt about the installation or use of this product, consult a competent electrician. Product or a person falling from height can cause serious personal injury. Please ensure suitable equipment is used by a competent person.

Note:

Product technical information and specification may change over time without prior notification. For the latest technical information please visit our web site www.robust.com.au and www.robustled.co.nz

-20°C < Ta < +40°C, 220-240V ~ 50/60Hz, Class I, IP66

Luminaire is non-dimmable.

Compatible with R3EM2PA-04 emergency pack, (1.5-hour emergency duration) and RHEMW-04 microwave sensor accessory. Note: These accessories must be fixed onto the locations marked "emergency" for emergency pack, or "Sensor" for the microwave sensor on the inside of the fittings.

Installation

1. Ensure mains supply is switched off before commencing work.
 2. Select suitable location for luminaire. Safety note! The power supply cable must not be exposed to mechanical damage.
 3. Disassemble the fitting base from the fitting.
 4. Mark appropriate fixing hole positions on the wall based on the Dimensional distance marked on the back of fitting and check location of buried cables, pipes and other building services before drilling.
 5. Insert the wall plugs into the holes after drilling and fix the brackets onto the wall.
 6. Assemble the IP gland into the end of fitting and attach the base to the brackets. Feed supply cables through gland and tighten gland.
 7. Connect power supply cable to terminal: Live SL– Brown, Neutral –Blue and Yellow/Green - Earth. Permanent Live (PL) as optional (for EM).
 8. Select the wattage (32W, 26W, 20W or 16W) and colour temperature CCT (3000K, 4000K or 5700K) using DIP switch on the driver. Factory default setting: 4000K, 32W. **WARNING: DO NOT CHANGE WATTAGE and CCT WHEN THE FITTING IS ON!**
 9. Attach metal plate/diffuser to base, refit the clips and fasten them with the screws. Ensure it is secure.
- Note: This luminaire has no user serviceable parts. If damaged, disconnect from mains and discontinue use.

The Installation must be carried out by a qualified electrician

LED Group Australia Pty Limited

Suite B, 2 Pittwin Road
Capalaba

Queensland 4157
Australia

Tel: 07 3890 5444

Fax: 07 3890 4777

Email: purchases@robust.com
Website: www.robust.com.au

LED Group

Crowe Hogwarth
72 Trafalgar Street
NELSON 7010
New Zealand

Tel: +64 3668 5285

Email: nz_purchases@robust.com

Website: www.robustled.co.nz



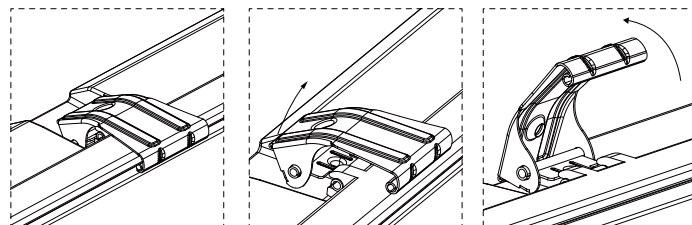
1.40Kg

1270mm

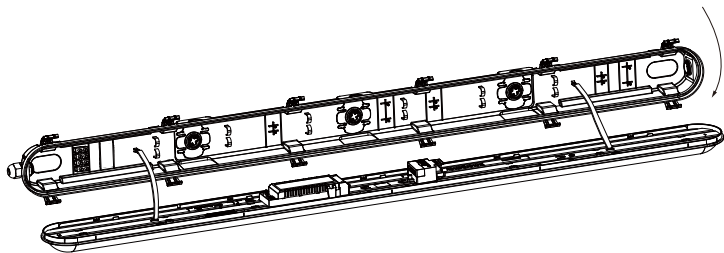
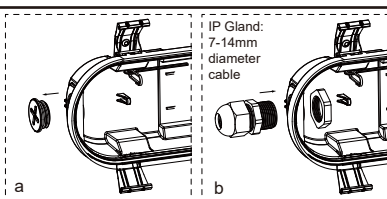
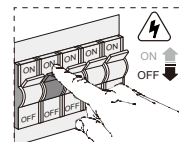
78mm

96mm

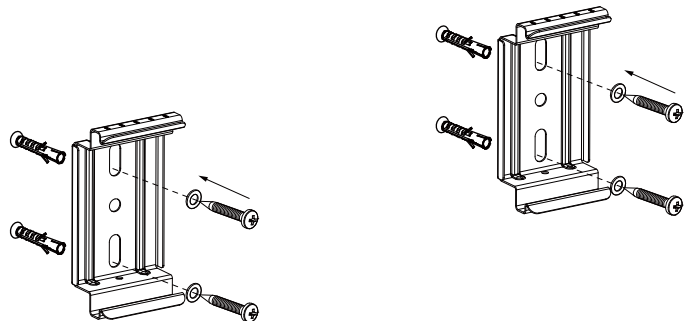
1



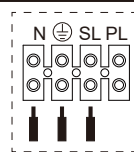
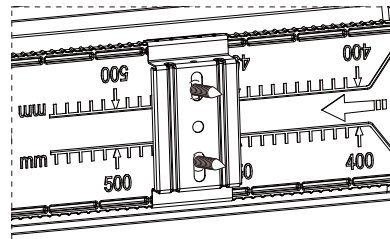
2



3



4

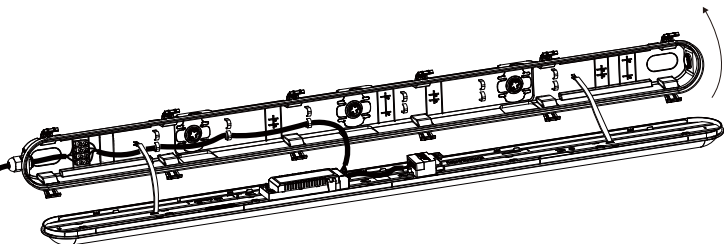


DIP Switch wattage

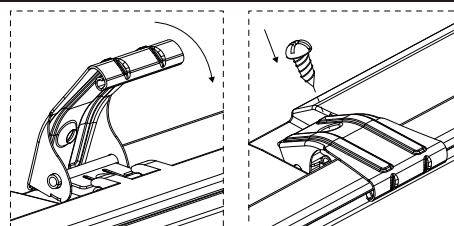
PIN1	PIN2	
ON	ON	32W
ON	OFF	26W
OFF	ON	20W
OFF	OFF	16W

DIP Switch CCT

PIN1	PIN2	
ON	ON	NW 4000K
ON	OFF	CW 5700K
OFF	ON	WW 3000K



5



6

