

SUNSYNC 16A SUNSET SWITCH PE CELL GREY

RSSPE-24

PLEASE READ INSTRUCTION BEFORE COMMENCING INSTALLATION AND RETAIN FOR FUTURE REFERENCES.

! Electrical products can cause death or injury, or damage to property. If in any doubt about the installation or use of this product, consult a competent electrician

Note:

Product technical information and specification may change over time without prior notification. For the latest technical information please visit our web site <https://au.robus.com> and www.robusled.co.nz

-20°C < Ta < +40°C, 220-240V~50Hz, Class II, IP66
 Max.Load: 600W (inductive), 3200W (Resistive)
 Load current: 16A

Lux Level Adjustment: 3-500 Lux
 Time Delay: 1, 2, 3, 4, 5, 6, 7, 8, 9 Hours
 Working Humidity: <93% RH.

This product is an automatic photocell switch for Lamps basing on the ambient-light level around it.
 Complied with the DN15(Ø20mm) PVC wire conduit/external tooth plug.

Installation

1. Ensure mains supply is switched off before commencing work.
2. Select suitable location (no obstruction affecting to accept natural light/no swaying object/no other lights to irradiate) for mounting the sensor. Recommend that it would be mounted onto the wall above the light and for better accuracy position / place the sensor as closer as possible to its associated lighting loads.
3. Disassemble the product via loosening the four screws and take off the cover as per figure 2.
4. Choose the proper conduit hole to crack open on the base by using a screwdriver and hammer as per figure 2.
5. Brush the PVC glue around the end of the sleeve joint with/without internal tooth and plug it firmly into the conduit hole on the base as per figure 3.
6. Drill mounting holes on the wall basing on the sizes on the back of the base, check location of buried cables, pipes and other building services before drilling. Insert the wall-plugs and fix the base onto the wall by using the screws. And then attach the screw caps with PVC glue. Check figure 4 please.
7. Brush the PVC glue on outside at the end of DN15(Ø20mm) wire conduit and insert it into the sleeve joint on the base.
8. Feed the power cable through the wire conduit to reach the base directly. Connect cables as per figure 5. Live In (Brown) to L, Live Out (Brown) to Loop and Neutrals to N. Check figure 5 please.
9. Adjust the Lux level and time that you want on the back of front cover.
10. Ensure that the gasket is fixed in place properly and refit the front cover(While fixing front cover, make sure that the logo follows the correct orientations), tighten the screws and attach screw cap. And then attach other bigger caps into the other holes that haven't been drilled on the base.
11. Attach/take down the black blind cap when stop the photocell detecting or testing.

Note: 1. This luminaire has no user serviceable parts. If damaged, disconnect from mains and discontinue use. 2. The controlled lighting fixtures shall be fixed in such a way that the stray lights from that fixture shall not fall on the PE sensor and may not activate it accidentally or unintentionally in any means. 3. Routine monthly cleaning recommended from outside using soft wipes over the detection areas to eliminate dust and or bird droppings accumulations which might block / reduce the entry of minimum light for PE sensor detections.

Function:

Lux setting: 3, 10, 30, 100, 200, 300, 500Lux.

Time setting: The LED indicator inside the sensor will flash to display the preset time as following:

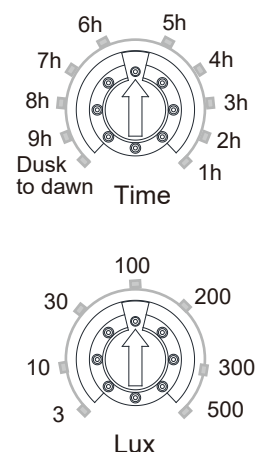
- | | |
|-------------------------------|---|
| 1) 1 hour: flash one time | 6) 6 hours: flash six times |
| 2) 2 hours: flash two times | 7) 7 hours: flash seven times |
| 3) 3 hours: flash three times | 8) 8 hours: flash eight times |
| 4) 4 hours: flash four times | 9) 9 hours: flash nine times |
| 5) 5 hours: flash five times | 10) dusk to dawn: rapidly flash ten times |

Example: Set the LUX knob to "3" position and time to "1h" position. When the ambient light is less than 3 LUX, the red indicator light will turn on, after 1 minute, the lamp will turn on for 1 hour. After 1 hour elapse, lamp will turn off and LED indicator will be off until the ambient light is more than 10Lux. When the ambient light is more than 3 Lux it can not trigger the lamp.

Set the LUX knob to "3" position and time to "DUSK TO DAWN" position. If the ambient light is less than 3 LUX, the red indicator light will turn on, after 1 minute, the lamp will turn on and hold on lighting. Only when the ambient light is more than 10 LUX, the red indicator light will turn off, after 1 minute, the lamp will turn off.

Note: 1. When lamp is on, another light source irradiate to the photocell, and this light lasts for more than one minute, the lamp will turn off and the electronic TIMER will stop counting. The TIMER will recount from the beginning when the light turns on again.

2. The electronic TIMER will reset when the power is off over 2~5 seconds.



Set knob is on the back of front cover

The Installation must be carried out by a qualified electrician

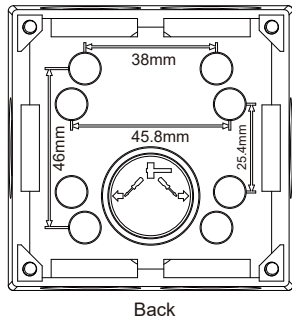
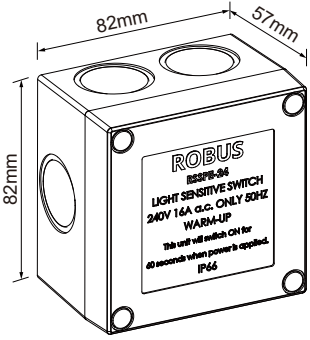
LED Group Australia Pty Limited
 Unit 3, 2 Pittwin Road
 Capalaba
 Queensland 4157
 Australia
 Tel: 07 3890 5444
 Fax: 07 3890 4777
 Email: purchasesau@robus.com
<https://au.robus.com>

Cuthbert Stewart Ltd
 22 Fisher Crescent,
 Mt Wellington, Auckland.
 PO Box 62293, Sylvia Park 1644,
 Auckland, New Zealand.

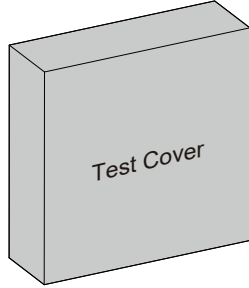
Ph: 0800 288 423
 Customer Support:
support@csi-online.nz



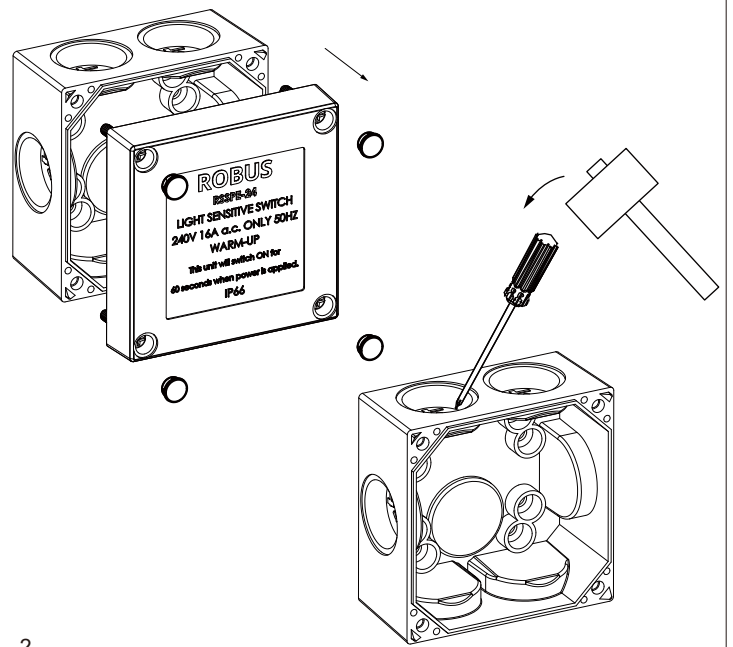
Weight: 0.2kg



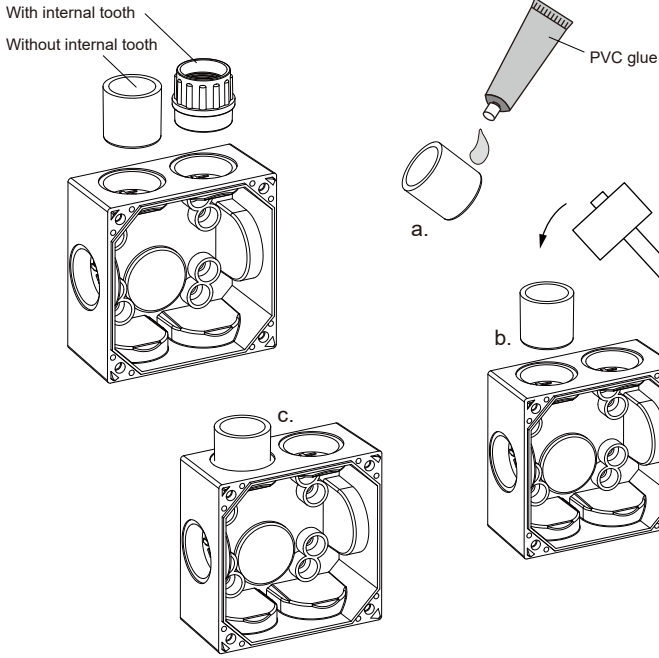
Back



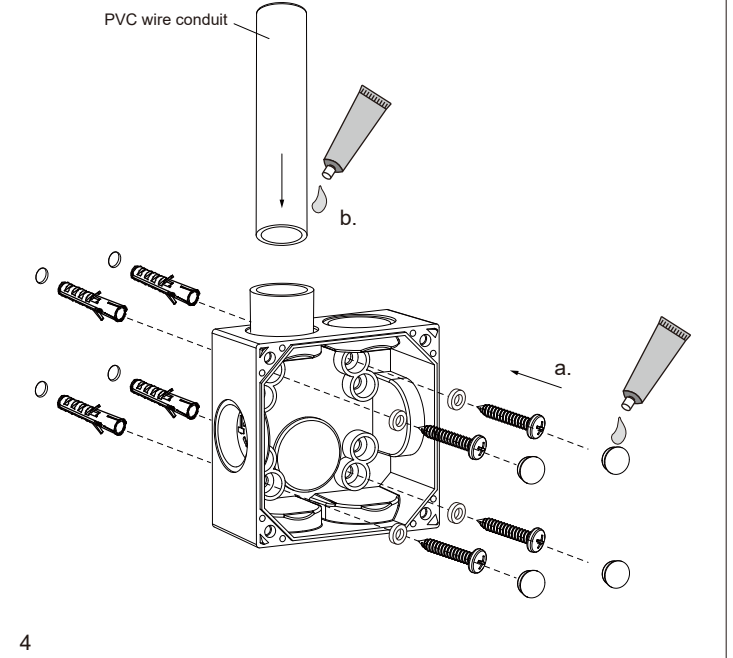
1



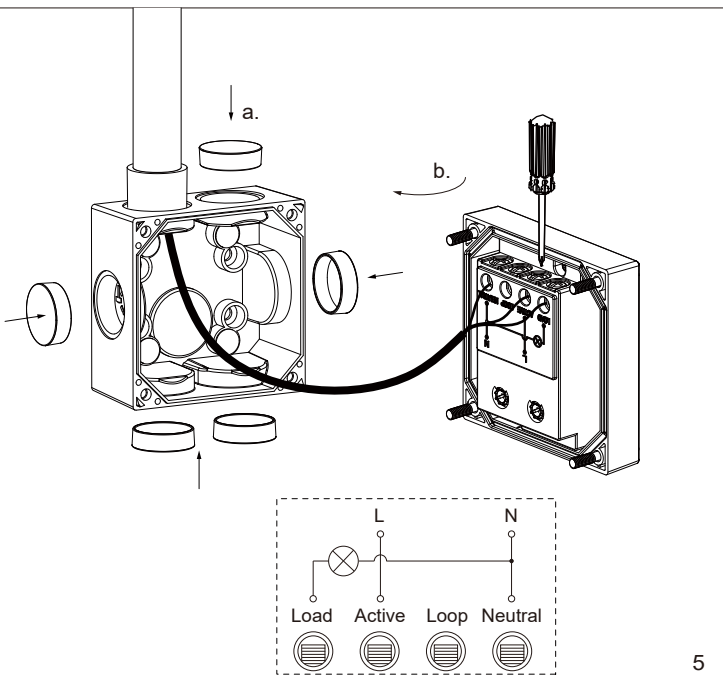
2



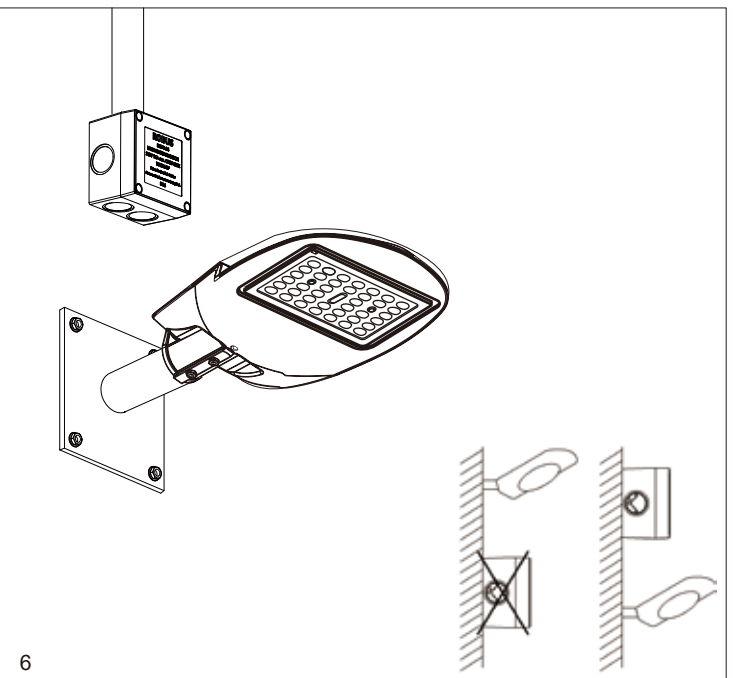
3



4



5



6