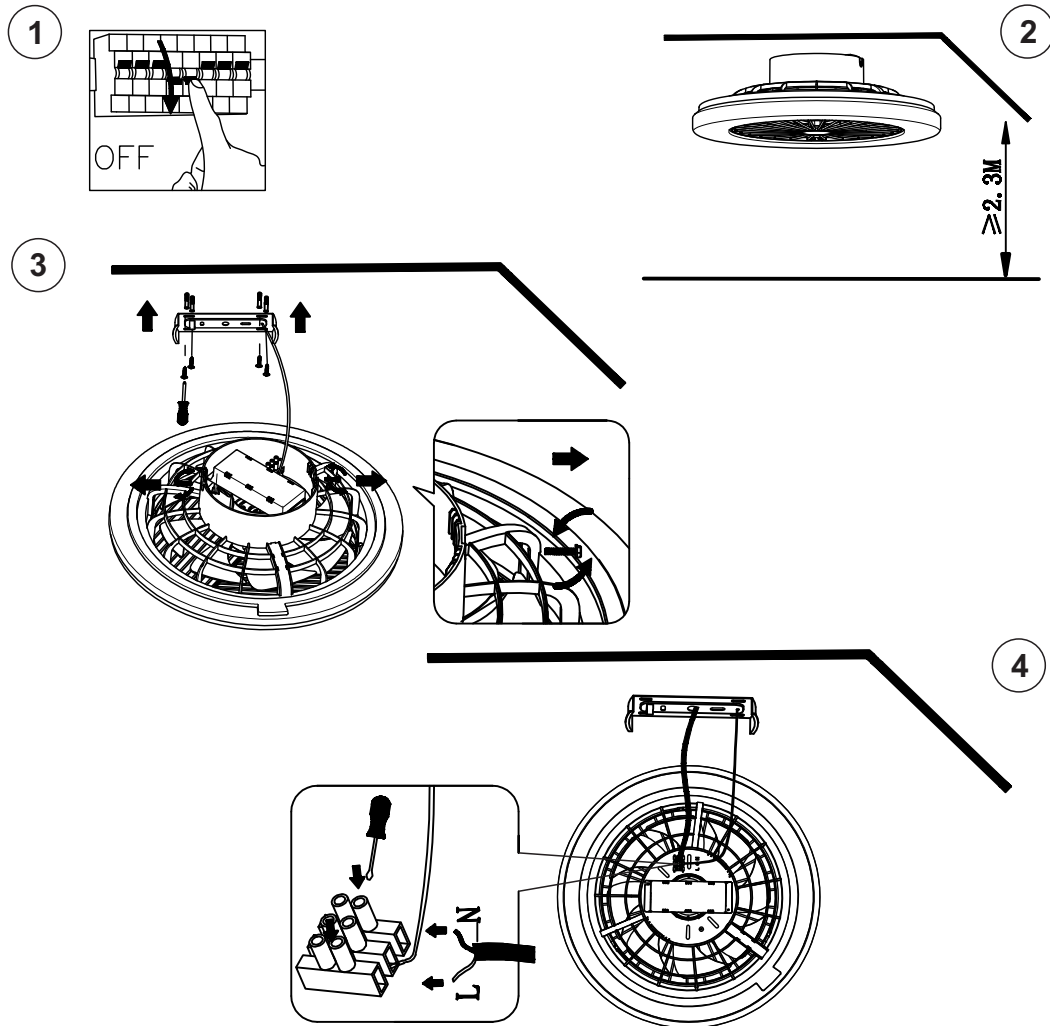
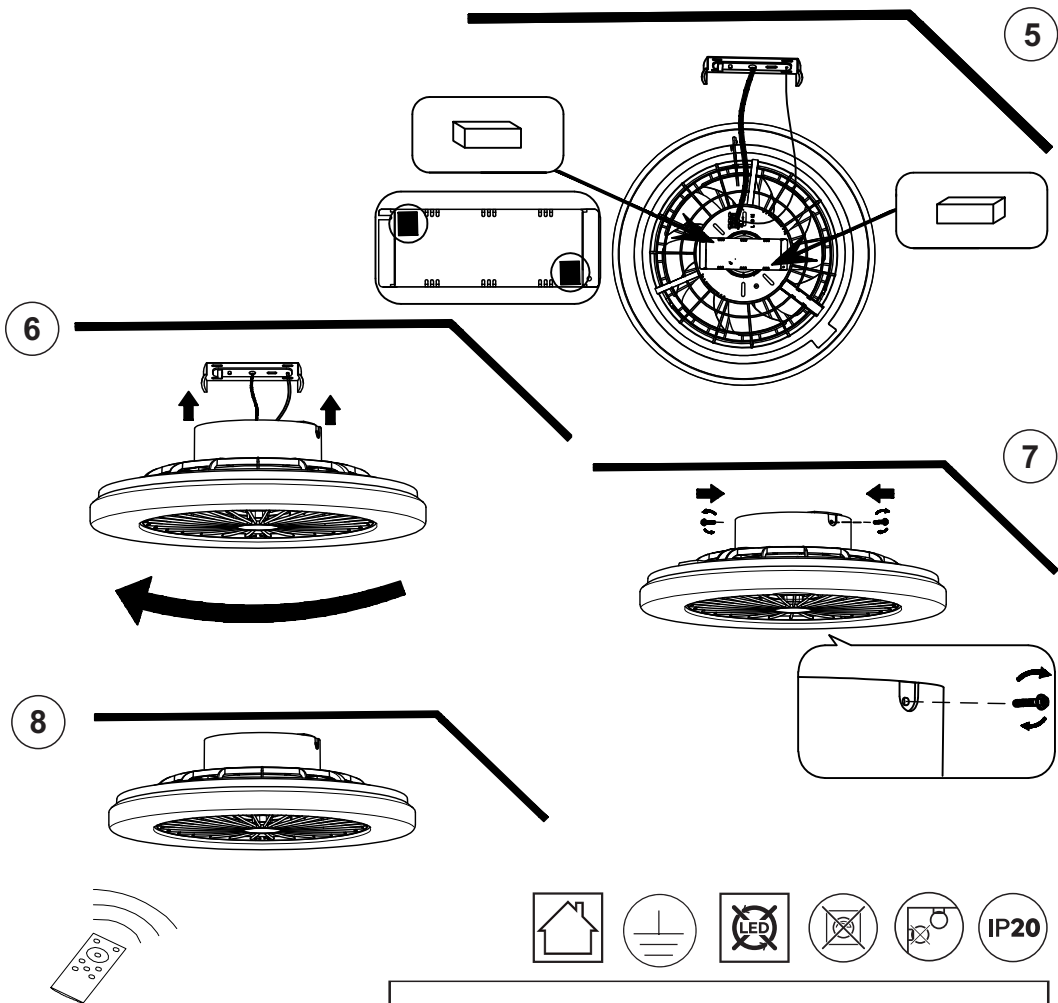


## Warning:

In order to prevent lamp damage/falling/electric shock/fire and other accidents threatening personal safety, the LED fan ceiling lamp must be installed by professional person, please follow the schematic strictly for doing the installation and using, it is forbidden to change the lamp and components by themselves.

## Installation:



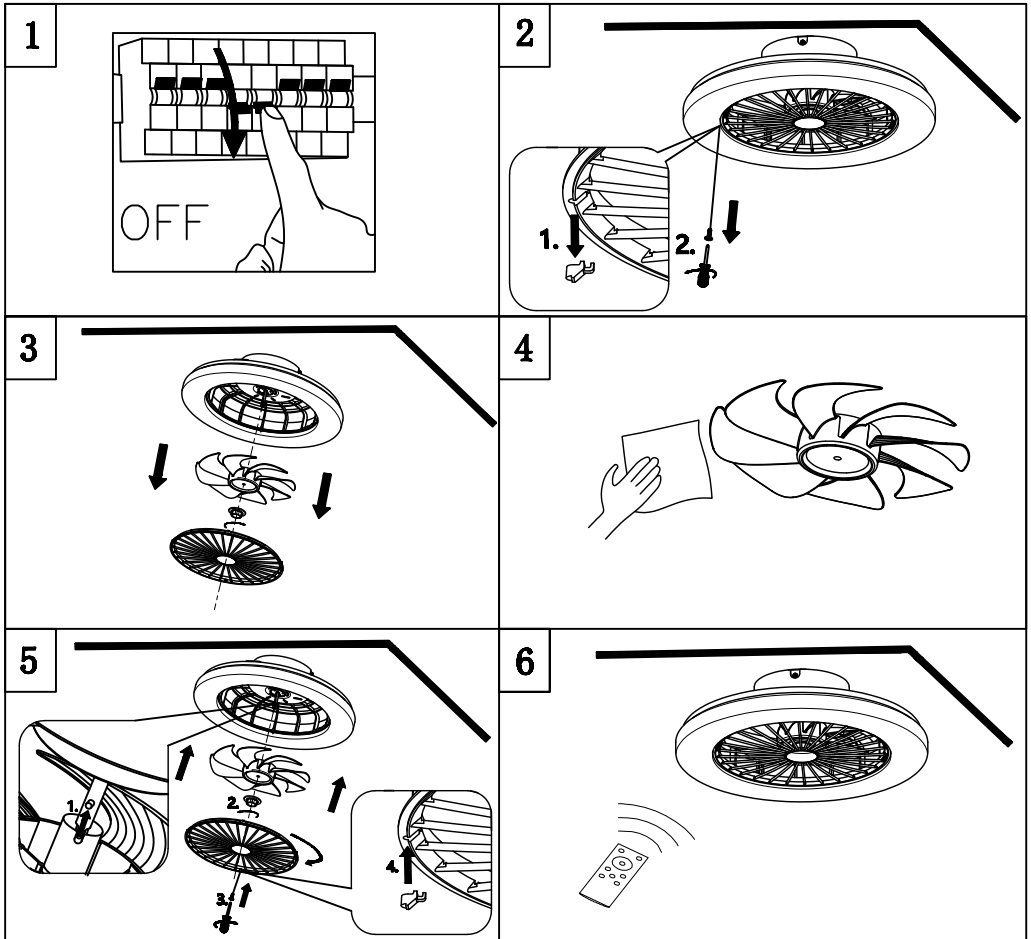


**220-240VAC, 50Hz, 1 x LED 40W, Fan 15W**

#### Installation Instructions:

1. Turn off the circuit breaker.
2. The fan light must be installed on a solid wood ceiling or concrete ceiling. The distance from the fan to the floor should be more than 2.3 meters.
3. Loosen the side screws of the mounting bracket, remove the bracket, and use expansion screws to fix the bracket to the ceiling.
4. Connect the blue and brown wires from the external power supply to the terminal block.
5. Attach the two EVA pads (from the parts package) to both ends of the driver as shown in the diagram.
6. Install the fan light base onto the mounting bracket and rotate it counterclockwise to secure.
7. Ensure the side screws on the bracket hold the fan light base firmly in place, and tighten both side screws.
8. Turn the circuit breaker back on and use the remote control to turn on the fan light. Check if it operates normally.

# Disassemble and clean:



## Warning:

In order to prevent lamp damage/falling/electric shock/fire and other accidents threatening personal safety, the fan must be cleaned by professional person, please follow the schematic strictly for doing the cleaning, it is forbidden to change the lamp and components by themselves

## Cleaning Instructions:

1. Turn off the circuit breaker.
2. Remove the decorative plug, then use a screwdriver to remove the screws. Rotate the grille counterclockwise to remove it. Then, turn the fan blade knob clockwise to remove it. Finally, pull down to remove the fan blades.
3. Wipe the fan blades clean and dry off any remaining water droplets.
4. Reinstall the fan blades. Align the motor positioning pin with the slot on the fan blade, rotate the fan blade knob counterclockwise to secure the blades, then rotate the grille clockwise to reinstall it. Align the holes on the grille with the 5 screw holes on the main body, insert the screws, and finally reinsert the decorative plug.
6. Turn the circuit breaker back on and use the remote control to turn on the fan light. Check if it is operating normally.

## Function description

The light should not be operated on an external dimmer.

Description of how the light works without remote control unit:

If the light is switched on via the main switch/wall switch, the unit provides the lighting scenario which was last using the remote unit (memory effect)

Operation of the remote control:

Button 1:

Night light

Button 2:

The fan is switched on/off.

Button 3:

ON/OFF: The light is switched on/off.

After being switched on again it will return to the state before the remote control is turned off.

Button 4/5:

Brightness regulator: The adjustment takes place in stages.

By pressing for a short period, it is possible to control the individual stages.

Pressing the button permanently results in the maximum or minimum brightness being reached

Button 6/7:

Warm: Color setting -warm white 3000K

White: Color setting - cold white 5500K

The adjustment takes place in stages.

By pressing for a short period, it is possible to control the individual stages

Pressing the button permanently results in the warmest or coldest color setting being reached.

Button 8: CCT

Button 9: Timing

Fan timing: 0.5H 1H 2H

Button 10: Wind speed increase

Button 11: Wind speed decrease

Button 12: Forward and reverse switching rotation of fan blade

